



TG/207/1

ORIGINAL: English

DATE: April 9, 2003

INTERNATIONAL UNION FOR THE PROTECTION OF NEW VARIETIES OF PLANTS
GENEVA

<p>CALIBRACHOA <i>(Calibrachoa Llave & Lex.)</i></p>

GUIDELINES

FOR THE CONDUCT OF TESTS

FOR DISTINCTNESS, UNIFORMITY AND STABILITY

Alternative Names: *

<i>Latin</i>	<i>English</i>	<i>French</i>	<i>German</i>	<i>Spanish</i>
<i>Calibrachoa</i> Llave & Lex., <i>Calibrachoa</i> Cery	Calibrachoa	Calibrachoa	Calibrachoa	Calibrachoa

ASSOCIATED DOCUMENTS

These guidelines should be read in conjunction with document TG/1/3, “General Introduction to the Examination of Distinctness, Uniformity and Stability and the Development of Harmonized Descriptions of New Varieties of Plants” (hereinafter referred to as the “General Introduction”) and its associated “TGP” documents.

Other associated UPOV documents: TG/212/1

* These names were correct at the time of the introduction of these Test Guidelines but may be revised or updated. [Readers are advised to consult the UPOV Code, which can be found on the UPOV Website (www.upov.int), for the latest information.]

<u>TABLE OF CONTENTS</u>	<u>PAGE</u>
1. SUBJECT OF THESE TEST GUIDELINES.....	3
2. MATERIAL REQUIRED	3
3. METHOD OF EXAMINATION.....	3
3.1 Duration of Tests.....	3
3.2 Testing Place	3
3.3 Conditions for Conducting the Examination.....	3
3.4 Test Design	4
3.5 Number of Plants / Parts of Plants to be Examined.....	4
3.6 Additional Tests	4
4. ASSESSMENT OF DISTINCTNESS, UNIFORMITY AND STABILITY	4
4.1 Distinctness	4
4.2 Uniformity.....	4
4.3 Stability	5
5. GROUPING OF VARIETIES AND ORGANIZATION OF THE GROWING TRIAL	5
6. INTRODUCTION TO THE TABLE OF CHARACTERISTICS	6
6.1 Categories of Characteristics.....	6
6.2 States of Expression and Corresponding Notes.....	6
6.3 Types of Expression	6
6.4 Example Varieties	6
6.5 Legend.....	6
7. TABLE OF CHARACTERISTICS/TABLEAU DES CARACTÈRES/MERKMALSTABELLE/TABLA DE CARACTERES.....	7
8. EXPLANATIONS ON THE TABLE OF CHARACTERISTICS	13
9. LITERATURE	16
10. TECHNICAL QUESTIONNAIRE.....	17

1. Subject of these Test Guidelines

These Test Guidelines apply to all varieties of the genus *Calibrachoa* Llave & Lex. of the family Solanaceae. These Test Guidelines do not apply to varieties of the genus *Petunia*, which are covered by the Test Guidelines for *Petunia* (TG/212/1).

2. Material Required

2.1 The competent authorities decide on the quantity and quality of the plant material required for testing the variety and when and where it is to be delivered. Applicants submitting material from a State other than that in which the testing takes place must ensure that all customs formalities and phytosanitary requirements are complied with.

2.2 The material is to be supplied in the form of rooted cuttings.

2.3 The minimum quantity of plant material, to be supplied by the applicant, should be:

25 rooted cuttings.

2.4 The plant material supplied should be visibly healthy, not lacking in vigor, nor affected by any important pest or disease.

2.5 The plant material should not have undergone any treatment which would affect the expression of the characteristics of the variety, unless the competent authorities allow or request such treatment. If it has been treated, full details of the treatment must be given.

3. Method of Examination

3.1 *Duration of Tests*

The minimum duration of tests should normally be a single growing cycle.

3.2 *Testing Place*

The tests should normally be conducted at one place. If any characteristics of the variety, which are relevant for the examination of DUS, cannot be seen at that place, the variety may be tested at an additional place.

3.3 *Conditions for Conducting the Examination*

3.3.1 The tests should be carried out under conditions ensuring satisfactory growth for the expression of the relevant characteristics of the variety and for the conduct of the examination. Unless otherwise stated, all observations should be made at the time of full flowering.

3.3.2 Because daylight varies, color determinations made against a color chart should be made either in a suitable cabinet providing artificial daylight or in the middle of the day in a room without direct sunlight. The spectral distribution of the illuminant for artificial daylight should conform with the CIE Standard of Preferred Daylight D 6500 and should fall within

the tolerances set out in the British Standard 950, Part I. These determinations should be made with the plant part placed against a white background.

3.4 Test Design

3.4.1 The design of the tests should be such that plants or parts of plants may be removed for measurement or counting without prejudice to the observations which must be made up to the end of the growing cycle.

3.4.2 Each test should be designed to result in a total of at least 20 plants.

3.5 Number of Plants / Parts of Plants to be Examined

Unless otherwise indicated, all observations determined by measuring or counting should be made on 10 plants or parts taken from each of 10 plants.

3.6 Additional Tests

Additional tests, for examining relevant characteristics, may be established.

4. Assessment of Distinctness, Uniformity and Stability

4.1 Distinctness

4.1.1 General Recommendations

It is of particular importance for users of these Test Guidelines to consult the General Introduction prior to making decisions regarding distinctness. However, the following points are provided for elaboration or emphasis in these Test Guidelines.

4.1.2 Consistent Differences

The minimum duration of tests recommended in section 3.1 reflects, in general, the need to ensure that any differences in a characteristic are sufficiently consistent.

4.1.3 Clear Differences

Determining whether a difference between two varieties is clear depends on many factors, and should consider, in particular, the type of expression of the characteristic being examined, i.e. whether it is expressed in a qualitative, quantitative, or pseudo-qualitative manner. Therefore, it is important that users of these Test Guidelines are familiar with the recommendations contained in the General Introduction prior to making decisions regarding distinctness.

4.2 Uniformity

4.2.1 It is of particular importance for users of these Test Guidelines to consult the General Introduction prior to making decisions regarding uniformity. However, the following points are provided for elaboration or emphasis in these Test Guidelines:

4.2.2 For the assessment of uniformity a population standard of 1% and an acceptance probability of at least 95% should be applied. In the case of a sample size of 20 plants, 1 off-type is allowed.

4.3 *Stability*

4.3.1 In practice, it is not usual to perform tests of stability that produce results as certain as those of the testing of distinctness and uniformity. However, experience has demonstrated that, for many types of variety, when a variety has been shown to be uniform, it can also be considered to be stable.

4.3.2 Where appropriate, or in cases of doubt, stability may be tested, either by growing a further generation, or by testing a new plant stock to ensure that it exhibits the same characteristics as those shown by the previous material supplied.

5. Grouping of Varieties and Organization of the Growing Trial

5.1 The selection of varieties of common knowledge to be grown in the trial with the candidate varieties and the way in which these varieties are divided into groups to facilitate the assessment of distinctness is aided by the use of grouping characteristics.

5.2 Grouping characteristics are those in which the documented states of expression, even where produced at different locations, can be used, either individually or in combination with other such characteristics: (a) to select varieties of common knowledge that can be excluded from the growing trial used for examination of distinctness; and (b) to organize the growing trial so that similar varieties are grouped together.

5.3 The following have been agreed as useful grouping characteristics:

- (a) Leaf blade: variegation (characteristic 7);
- (b) Flower: type (characteristic 14);
- (c) Corolla lobe: number of colors of upper side (excluding veins) (characteristic 17);
- (d) Corolla lobe: main color of upper side (characteristic 18) with the following groups:

- Gr. 1: white
- Gr. 2: yellow
- Gr. 3: yellow orange
- Gr. 4: red
- Gr. 5: blue pink
- Gr. 6: blue red
- Gr. 7: purple red
- Gr. 8: purple
- Gr. 9: violet
- Gr. 10: blue violet

- (e) Corolla lobe: conspicuousness of veins on upper side (characteristic 21)

5.4 Guidance for the use of grouping characteristics, in the process of examining distinctness, is provided through the General Introduction.

6. Introduction to the Table of Characteristics

6.1 *Categories of Characteristics*

6.1.1 Standard Test Guidelines Characteristics

Standard Test Guidelines characteristics are those which are approved by UPOV for examination of DUS and from which members of the Union can select those suitable for their particular circumstances.

6.1.2 Asterisked Characteristics

Asterisked characteristics (denoted by *) are those included in the Test Guidelines which are important for the international harmonization of variety descriptions and should always be examined for DUS and included in the variety description by all members of the Union, except when the state of expression of a preceding characteristic or regional environmental conditions render this inappropriate.

6.2 *States of Expression and Corresponding Notes*

States of expression are given for each characteristic to define the characteristic and to harmonize descriptions. Each state of expression is allocated a corresponding numerical note for ease of recording of data and for the production and exchange of the description.

6.3 *Types of Expression*

An explanation of the types of expression of characteristics (qualitative, quantitative and pseudo-qualitative) is provided in the General Introduction.

6.4 *Example Varieties*

Where appropriate, example varieties are provided to clarify the states of expression of each characteristic.

6.5 *Legend*

(*) Asterisked characteristic – see Section 6.1.2

QL Qualitative characteristic – see Section 6.3

QN Quantitative characteristic – see Section 6.3

PQ Pseudo-Qualitative characteristic – see Section 6.3

(+) See Explanations on the Table of Characteristics in Chapter 8.

7. Table of Characteristics/Tableau des caractères/Merkmalstabelle/Tabla de caracteres

	English	français	deutsch	español	Example Varieties Exemples Beispielssorten Variedades ejemplo	Note/ Nota
1.	Plant: growth habit	Plante: port	Pflanze: Wuchsform	Planta: porte		
QL	upright	dressée	aufrecht	erecto	Sunbelbu	1
	creeping	rampante	kriechend	trepador	Sunbelkubu	2
2. (*)	Plant: height	Plante: hauteur	Pflanze: Höhe	Planta: altura		
QN	short	courte	niedrig	baja	Lazzpersa	3
	medium	moyenne	mittel	media	Sunbelpi	5
	tall	haute	hoch	alta	Sunbelbu	7
3. (*) (+)	Shoot: length	Tige: longueur	Trieb: Länge	Brote: longitud		
QN	short	courte	kurz	corto	Sunbelkuopi	3
	medium	moyenne	mittel	medio	Lazzpersa	5
	long	longue	lang	largo	KLEC00070	7
4. (*)	Leaf blade: length	Limbe: longueur	Blattspreite: Länge	Limbo: longitud		
QN	short	court	kurz	corto	Kiecabul	3
	medium	moyen	mittel	medio	KLEC00070	5
	long	long	lang	largo	Sunbelchipi	7
5. (*)	Leaf blade: width	Limbe: largeur	Blattspreite: Breite	Limbo: anchura		
QN	narrow	étroit	schmal	estrecho		3
	medium	moyen	mittel	medio	Lazzpersbon	5
	broad	large	breit	ancho	Sunbelkuopi	7
6. (+)	Leaf blade: shape of apex	Limbe: forme du sommet	Blattspreite: Form der Spitze	Limbo: forma del ápice		
PQ	narrow acute	aigu étroit	schmalspiz	agudo estrecho	KLEC00070	1
	broad acute	aigu large	breitspitz	agudo ancho	Sunbelchipi	2
	obtuse	obtus	stumpf	obtus		3

	English	français	deutsch	español	Example Varieties Exemples Beispielssorten Variedades ejemplo	Note/ Nota
7. (*)	Leaf blade: variegation	Limbe: panachure	Blattspreite: Panaschierung	Limbo: variegado		
QL	absent	absente	fehlend	ausente		1
	present	présente	vorhanden	presente		9
8. (*)	<u>Non-variegated varieties only:</u> Leaf blade: green color of upper side	<u>Variétés non panachées</u> seulement: Limbe: couleur verte de la face supérieure	<u>Nur Sorten ohne Panaschierung:</u> Blattspreite: Grünfärbung der Oberseite	<u>Sólo variedades no variegados:</u> Limbo: color verde del haz		
QN	light	claire	hell	claro	Sunbelkuopi	3
	medium	moyenne	mittel	medio	Sunbelchipi	5
	dark	foncée	dunkel	oscuro		7
9.	Petiole: length	Pétiole: longueur	Blattstiel: Länge	Pecíolo: longitud		
QN	absent or very short	absent ou très court	fehlend oder sehr kurz	ausente o muy corto		1
	short	court	kurz	corto		3
	medium	moyen	mittel	medio		5
	long	long	lang	largo		7
10.	Pedice: length	Pédicelle: longueur	Blütenstiel: Länge	Pedícelo: longitud		
QN	short	court	kurz	corto	Sunbelbu	3
	medium	moyen	mittel	medio	Sunbelkubu	5
	long	long	lang	largo	Sumcali 01	7
11. (*) (+)	Sepal: length	Sépale: longueur	Kelchblatt: Länge	Sépalo: longitud		
QN	short	court	kurz	corto	Sunbelkuopi	3
	medium	moyen	mittel	medio	Sunbelkubu	5
	long	long	lang	largo	Sunbelpi	7

	English	français	deutsch	español	Example Varieties Exemples Beispielssorten Variedades ejemplo	Note/ Nota
12. (*) (+)	Sepal: width (longest part which is not fused)	Sépale: largeur (partie la plus longue non soudée)	Kelchblatt: Breite (längste, nicht verwachsene Stelle)	Sépalo: anchura (parte larga no soldada)		
QN	narrow	étroit	schmal	estrecho	Sunbelpi	3
	medium	moyen	mittel	medio	Sunbelkubu	5
	broad	large	breit	ancho	KLEC99R14	7
13.	Sepal: anthocyanin coloration	Sépale: pigmentation anthocyanique	Kelchblatt: Anthocyanfärbung	Sépalo: pigmentación antociánica		
QL	absent	absente	fehlend	ausente	Sunbelkuho	1
	present	présente	vorhanden	presente	Lazzpersa	9
14. (*)	Flower: type	Fleur: type	Blüte: Typ	Flor: tipo		
QL	single	simple	einfach	único		1
	double	double	gefüllt	doble		2
15. (*) (+)	Flower: diameter	Fleur: diamètre	Blüte: Durchmesser	Flor: diámetro		
QN	small	petit	klein	Pequeño	Sunbelbu	3
	medium	moyen	mittel	Medio	Sumcali 01	5
	large	grand	groß	Grande	KLEC99R14	7
16. (+)	Flower: degree of lobing	Fleur: découpeure du bord	Blüte: Stärke der Lappung	Flor: grado de lobulado		
QN	weak	faible	gering	débil		3
	medium	moyenne	mittel	medio		5
	strong	forte	stark	fuerte		7

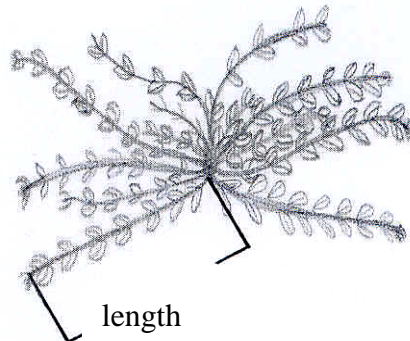
	English	français	deutsch	español	Example Varieties Exemples Beispielssorten Variedades ejemplo	Note/ Nota
17. (*)	Corolla lobe: number of colors of upper side (excluding veins)	Lobe de la corolle: nombre de couleurs de la face supérieure (non compris les nervures)	Kronlappen: Anzahl Farben der Oberseite (ohne Blütenröhre)	Lóbulo de la corola: número de colores de la parte superior (excluyendo los nervios)		
QL	one	une	eine	uno		1
	two	deux	zwei	dos		2
	more than two	plus de deux	mehr als zwei	más de dos		3
18. (*)	Corolla lobe: main color of upper side	Lobe de la corolle: couleur principale de la face supérieure	Kronlappen: Hauptfarbe der Oberseite	Lóbulo de la corola: color principal de la parte superior		
PQ	RHS Colour Chart (indicate reference number)	Code RHS des couleurs (indiquer le numéro de référence)	RHS-Farbkarte (Nummer angeben)	Carta de colores RHS (indicar el número de referencia)		
19. (*)	<u>For bi- and multi- colored varieties only:</u> Corolla lobe: secondary color of upper side (as for 17)	<u>Variétés bi et multicolores seulement:</u> Lobe de la corolle: couleur secondaire de la face supérieure (comme pour 17)	<u>Nur für zwei- und mehrfarbige Sorten:</u> <u>Kronlappen:</u> Sekundärfarbe der Oberseite (wie für 17)	<u>Sólo para variedades bicolores y multicolores:</u> Lóbulo de la corola: color secundario de la parte superior (como para 17)		
PQ	RHS Colour Chart (indicate reference number)	Code RHS des couleurs (indiquer le numéro de référence)	RHS-Farbkarte (Nummer angeben)	Carta de colores RHS (indicar número de referencia)		
20.	<u>For multi-colored varieties only:</u> Corolla lobe: tertiary color of upper side (as for 17)	<u>Variétés multicolores seulement:</u> Lobe de la corolle: couleur tertiaire de la face supérieure (comme pour 17)	<u>Nur für mehrfarbige Sorten:</u> Kronlappen: Tertiärfarbe der Oberseite (wie für 17)	<u>Sólo para variedades multicolores:</u> Lóbulo de la corola: color terciario de la parte superior (como para 17)		
PQ	RHS Colour Chart (indicate reference number)	Code RHS des couleurs (indiquer le numéro de référence)	RHS-Farbkarte (Nummer angeben)	Carta de colores RHS (indicar número de referencia)		

	English	français	deutsch	español	Example Varieties Exemples Beispielssorten Variedades ejemplo	Note/ Nota
21. (*)	Corolla lobe: conspicuousness of veins on upper side	Lobe de la corolle: netteté des nervures sur la face supérieure	Kronlappen: Ausprägung der Aderung auf der Oberseite	Lóbulo de la corola: evidencia de los nervios de la parte superior		
QN	absent or very weak	absente ou très peu nette	fehlend oder sehr gering	ausente o muy débil	Sunbelkuho	1
	weak	peu nette	gering	débil	Sunbelkubu	3
	medium	moyenne	mittel	media	Lazzpersa	5
	strong	forte	stark	fuerte	KLEC00070	7
	very strong	très forte	sehr stark	muy fuerte		9
22.	Corolla lobe: main color of lower side	Lobe de la corolle: couleur de la face inférieure	Kronlappen: Hauptfarbe der Unterseite	Lóbulo de la corola: color principal de la parte inferior		
PQ	RHS Colour Chart (indicate reference number)	Code RHS des couleurs (indiquer le numéro de référence)	RHS-Farbkarte (Nummer angeben)	Carta de colores RHS (indicar número de referencia)		
23. (+)	Corolla lobe: shape of apex	Lobe de la corolle: forme du sommet	Kronlappen: Form der Spitze	Lóbulo de la corola: forma del ápice		
PQ	cuspidate	cuspidé	mit aufgesetzter Spitze	cuspidado		1
	rounded	arrondi	abgerundet	redondeado		2
	truncate	tronqué	abgeflacht	truncado		3
	emarginate	émarginé	eingesenkt	emarginado		4
24. (+)	Corolla tube: maximum length	Tube de la corolle: longueur maximale	Kronröhre: maximale Länge	Tubo de la corola: longitud máxima		
QN	short	court	kurz	corto		3
	medium	moyen	mittel	medio		5
	long	long	lang	largo		7
25. (*)	Corolla tube: main color of inner side	Tube de la corolle: couleur principale de la face intérieure	Kronröhre: Hauptfarbe der Innenseite	Tubo de la corola: color principal de la parte interna		
PQ	RHS Colour Chart (indicate reference number)	Code RHS des couleurs (indiquer le numéro de référence)	RHS-Farbkarte (Nummer angeben)	Carta de colores RHS (indicar número de referencia)		

	English	français	deutsch	español	Example Varieties Exemples Beispielssorten Variedades ejemplo	Note/ Nota
26.	Corolla tube: conspicuousness of veins on inner side	Tube de la corolle: netteté des nervures sur la face intérieure	Kronröhre: Stärke der Aderung an der Innenseite	Tubo de la corola: evidencia de los nervios de la parte interna		
QN	absent or very weak	absente ou très peu nette	fehlend oder sehr gering	ausente o muy débil		1
	weak	peu nette	gering	débil		3
	medium	moyenne	mittel	media		5
	strong	forte	stark	fuerte		7
	very strong	très forte	sehr stark	muy fuerte		9

8. Explanations on the Table of Characteristics

Ad. 3: Shoot: length



Ad. 6: Leaf blade: shape of apex



1
narrow acute



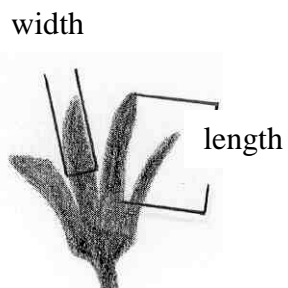
2
broad acute



3
obtuse

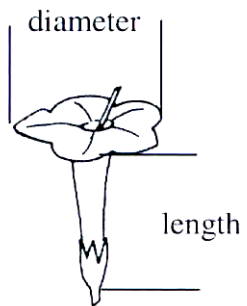
Ad. 11: Sepal: length

Ad. 12: Sepal: width

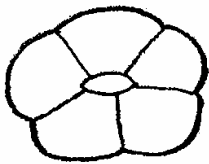


Ad. 15: Flower: diameter

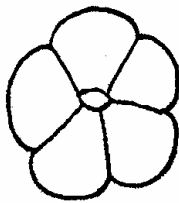
Ad. 24: Corolla tube: maximum length



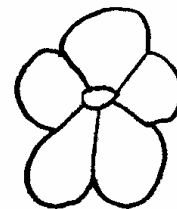
Ad. 16: Flower: degree of lobing



3
weak



5
medium



7
strong

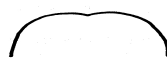
Ad. 23: Corolla lobe: shape of apex



1
cuspidate



2
rounded



3
truncate



4
emarginate

<i>Example Variety: Variety Name</i>	<i>Associated indication</i>
KLEC00070	MiniFamous Dark Blue
KLEC99R14	Carillion Big Blue
Sunbelbu	Million Bells Blue
Sunbelchipi	Million Bells Cherry
Sunbelkubu	Million Bells Trailing Blue
Sunbelkuho	Million Bells Trailing White
Sunbelkuopi	Million Bells Trailing Soft Pink
Sunbelpi	Million Bells Pink

9. Literature

Wijsman, H.J.W. (1982): On the Interrelationships of Certain Species of *Petunia* I. Taxonomic Notes on the Parental Species of *Petunia* Hybrida. Acta Bot. Neerl. 31 (5/6), pp. 477-490.

Wijsman, H.J.W. and de Jong, J.H. (1985): On the Interrelationships of Certain Species of *Petunia* IV. Hybridization Between *P. linearis* and *P. calycina* and Nomenclatorial Consequences in the *Petunia* Group. Acta Bot. Neerl. 34 (3), pp. 337-349.

Wijsman, H.J.W. (1990): On the Interrelationships of Certain Species of *Petunia* VI. New Names for the Species of *Calibrachoa* Formerly Included Into *Petunia* (Solanaceae). Acta Bot. Neerl. 39 (19), pp. 101 and 102.

10. Technical Questionnaire

TECHNICAL QUESTIONNAIRE	Page {x} of {y}	Reference Number:
-------------------------	-----------------	-------------------

	Application date: (not to be filled in by the applicant)
--	---

TECHNICAL QUESTIONNAIRE
to be completed in connection with an application for plant breeders' rights

1. Subject of the Technical Questionnaire

1.1 Genus

1.1.1 *Latin Name*

1.1.2 Common Name

1.2 Species (please complete)

1.2.1 *Latin Name*

1.2.2 Common Name

2. Applicant

Name

Address

Telephone No.

Fax No.

E-mail address

Breeder (if different from applicant)

TECHNICAL QUESTIONNAIRE	Page {x} of {y}	Reference Number:
-------------------------	-----------------	-------------------

3. Proposed denomination and breeder's reference

Proposed denomination
(if available)

Breeder's reference

4. Information on the breeding scheme and propagation of the variety

4.1 Breeding Scheme

Variety resulting from:

4.1.1 Crossing

- (a) controlled cross
(please state parent varieties)
- (b) partially unknown cross
(please state known parent variety(ies))
- (c) totally unknown cross

4.1.2 Mutation
(please state parent variety)

4.1.3 Discovery
(please state where, when and how developed)

4.1.4 Other
(please provide details)

4.2 Method of Propagating the Variety

4.2.1 Vegetative propagation

- (a) cuttings
- (b) *in vitro* propagation
- (c) other (state method)

4.2.2 Seed

4.2.3 Other
(please provide details)

TECHNICAL QUESTIONNAIRE	Page {x} of {y}	Reference Number:
-------------------------	-----------------	-------------------

5. Characteristics of the variety to be indicated (the number in brackets refers to the corresponding characteristic in Test Guidelines; please mark the note which best corresponds).

Characteristics	Example Varieties	Note
5.1 Leaf blade: variegation (7)		
absent		1[]
present		9[]
5.2 Flower: type (14)		
single		1[]
double		2[]
5.3 Flower: diameter (15)		
small	Sunbelbu	3[]
medium	Sumcali 01	5[]
large	KLEC99R14	7[]
5.4 Corolla lobe: number of colors of upper side (17) (excluding veins)		
one		1[]
two		2[]
more than two		3[]

TECHNICAL QUESTIONNAIRE	Page {x} of {y}	Reference Number:
-------------------------	-----------------	-------------------

Characteristics	Example Varieties	Note
5.5(i) Corolla lobe: main color of upper side (18)		
RHS Colour Chart (indicate reference number)		
.....		
5.5(ii) Corolla lobe: main color of upper side (18)		
white		1[]
yellow		2[]
yellow orange		3[]
red		5[]
blue pink		6[]
blue red		7[]
purple red		8[]
purple		9[]
violet		10[]
blue violet		11[]
other color (indicate)		
.....		
5.6 Corolla lobe: conspicuousness of veins on upper side (21)		
absent or very weak	Sunbelkuho	1[]
weak	Sunbelkubu	3[]
medium	Lazzpersa	5[]
strong	KLEC00070	7[]
very strong		9[]

TECHNICAL QUESTIONNAIRE	Page {x} of {y}	Reference Number:
-------------------------	-----------------	-------------------

6. Similar varieties and differences from these varieties

Denomination(s) of variety(ies) similar to your candidate variety	Characteristic(s) in which your candidate variety differs from the similar variety(ies)	Describe the expression of the characteristic(s) for the similar variety(ies)	Describe the expression of the characteristic(s) for your candidate variety
<i>(Example)</i>	<i>Corolla lobe: main color of upper side</i>	<i>white</i>	<i>blue pink</i>

Comments:

TECHNICAL QUESTIONNAIRE	Page {x} of {y}	Reference Number:
-------------------------	-----------------	-------------------

7. Additional information which may help in the examination of the variety

7.1 In addition to the information provided in sections 5 and 6, are there any additional characteristics which may help to distinguish the variety?

Yes [] No []

(If yes, please provide details)

7.2 Special conditions for the examination of the variety

7.2.1 Are there any special conditions for growing the variety or conducting the examination?

Yes [] No []

7.2.2 If yes, please give details:

7.3 Other information

A representative color photograph of the variety should accompany the Technical Questionnaire.

8. Authorization for release

(a) Does the variety require prior authorization for release under legislation concerning the protection of the environment, human and animal health?

Yes [] No []

(b) Has such authorization been obtained?

Yes [] No []

If the answer to (b) is yes, please attach a copy of the authorization.

9. I hereby declare that, to the best of my knowledge, the information provided in this form is correct:

Applicant's name

Signature

Date

[End of document]