



**copa\*cogeca**  
european farmers european agri-cooperatives

## The importance of new plant varieties for farmers and growers,

Thor G. Kofoed, Chairman of WP/Seeds, UPOV Symposium,  
Geneva, 2<sup>nd</sup> November 2012

### COPA-COGECA are a umbrella organisation which represents at EU-27 level

- F National Farmers Unions and National Agriculture Cooperative Federations
- F 72 organisation
- F 12 million people working on farms and over 36,000 cooperatives
- F Organic farmers, Conventional and even farmers who wants to grow GMO, seed producers, feed manufacturers, cereal, sugar, oilseed and protein crops growers.
- F We deal with environmental issues, food and feed safety and consumer affairs

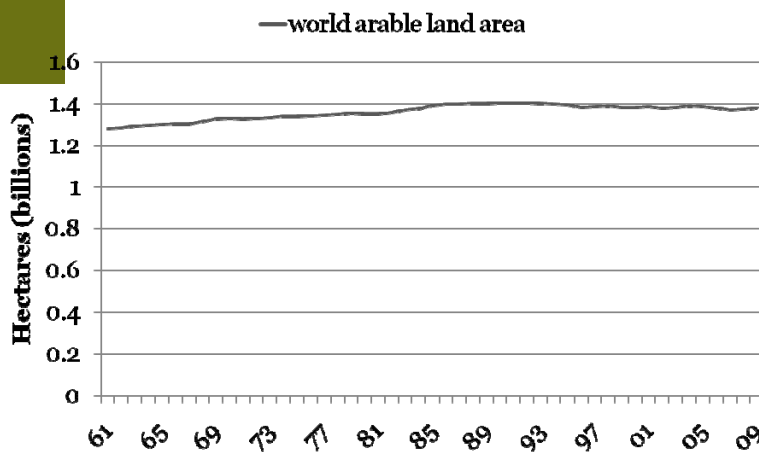
---

**copa\*cogeca**  
european farmers european agri-cooperatives

## The EU agriculture challenges

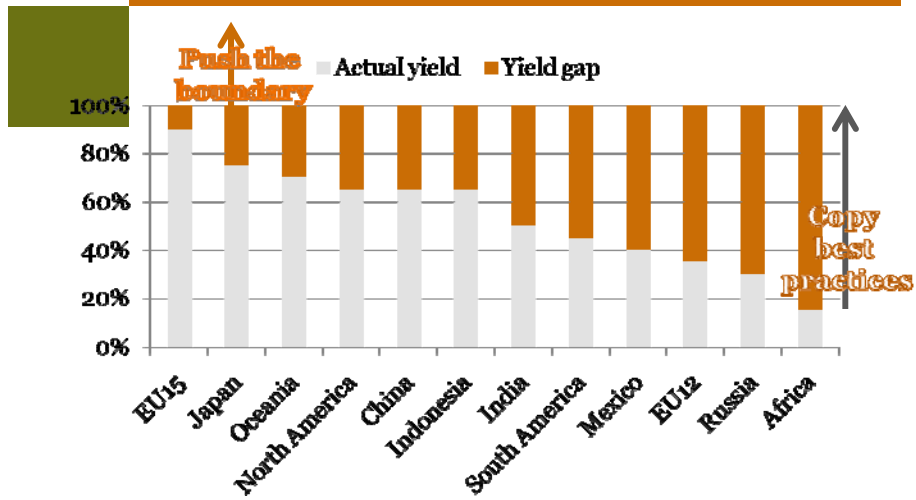
1. Increase world food demand
2. New demand to supply the biobased economy (bioenergy, green chemistry, textiles etc.)
3. Increase risks linked to climate change, price volatility, etc.
4. EU higher standards (mycotoxines)
5. Increase production costs
6. How to feed the 9 billion people in 2050?

## World area of arable land growing only marginally



Source: FAOSTAT 2012

## Productivity has to increase



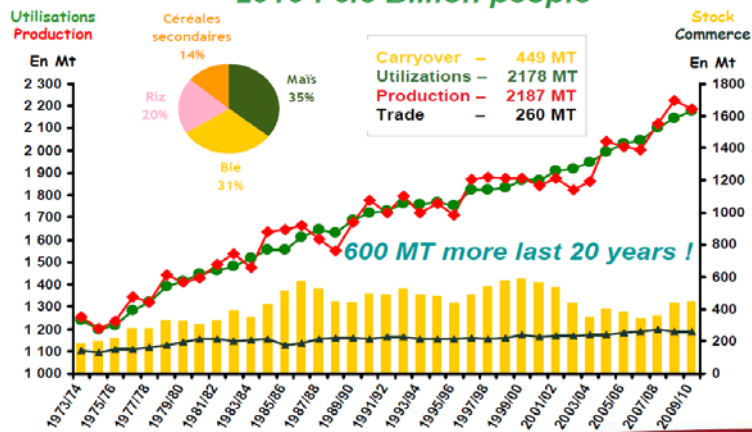
Source: World Bank 2010

copa\*cogeca  
european farmers european agri-cooperatives

5

## The case of cereals

**Cereals : 70% world food & feed !**  
2010 : 6.8 Billion people



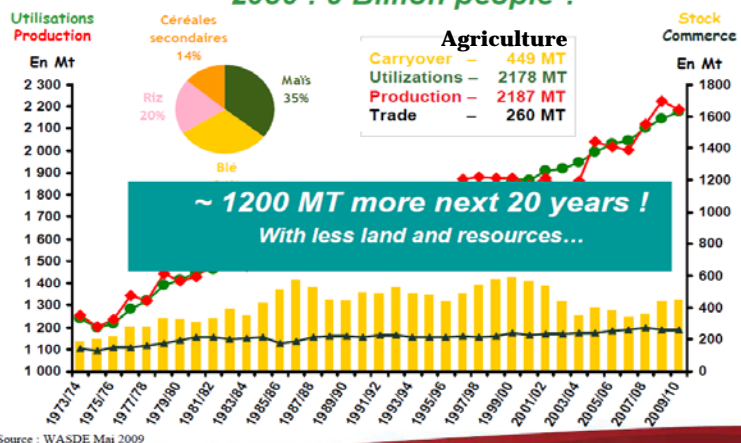
Source : WASDE Mai 2009

Copa-Cogeca | The voice of European farmers and european agri-cooperatives

6

## The case of cereals

**Cereals : 70% world food & feed !**  
**2030 : 9 Billion people ?**



Source : WASDE Mai 2009

Copa-Cogeca | The voice of European farmers and **copa\*cogeca** european agri-cooperatives

## Cereal yield annual growth rate

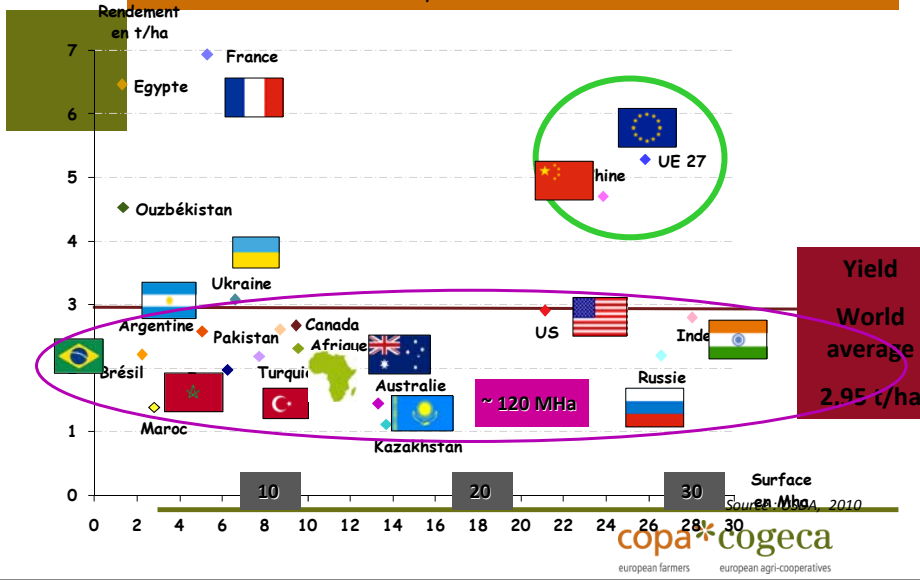
%	1960-70	1970-80	1980-90	1990 2000	2000 2007
World	3,7	3,5	1,7	1,7	2,1
USA	2,9	5,1	-1,4	1,9	3,9
EU	4,0	2,3	2,6	1,6	-0,3
Ex-USSR	2,9	0,1	0,6	-4,3	3,9
China	6,4	4,9	3,3	2,1	2,2
India	2,3	2,8	3,8	2,7	1,1
Rest of the world	3,5	3,3	1,8	2,0	2,5

Source CIRAD - B. Daviron

**copa\*cogeca**  
 european farmers european agri-cooperatives

# Cereals: Top 20

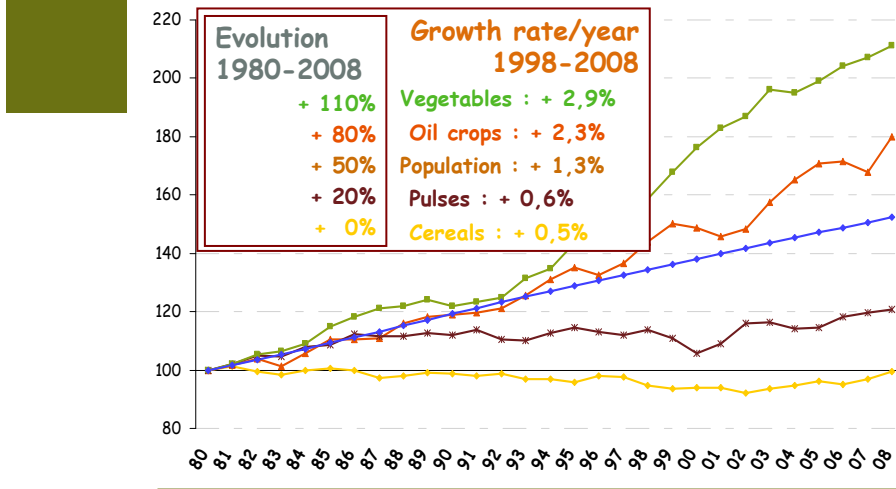
Blé - Moyenne 2007-2009



# Agriculture : World acreage evolution

1980 → 2008

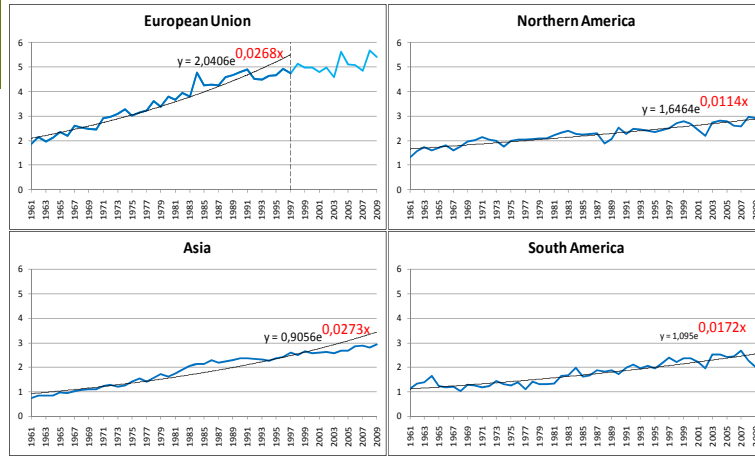
Base 100 in 1980



Source : FAO, January 2010

## The need to improve the cereals yield in the EU

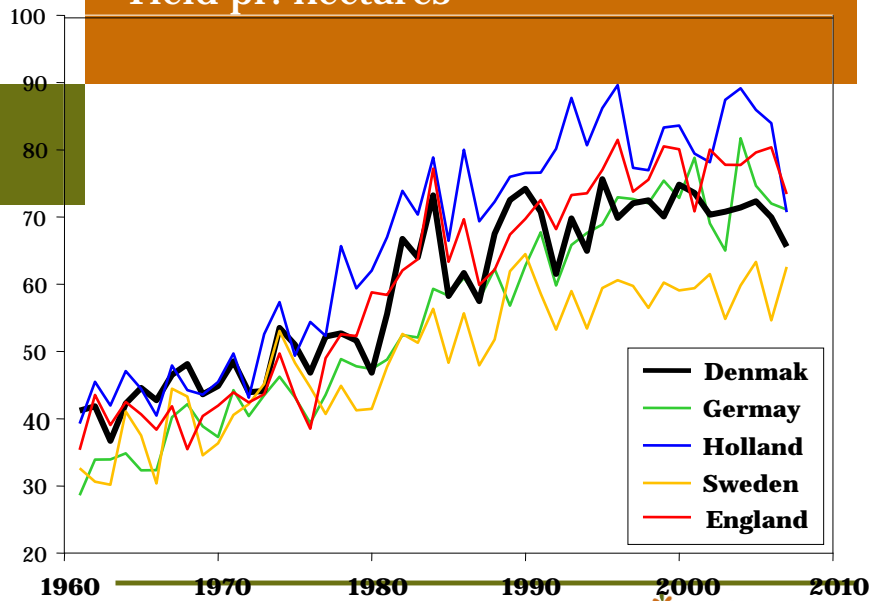
### Productivité du blé en T/ha



Source: Own figure based on FAO (2011C)

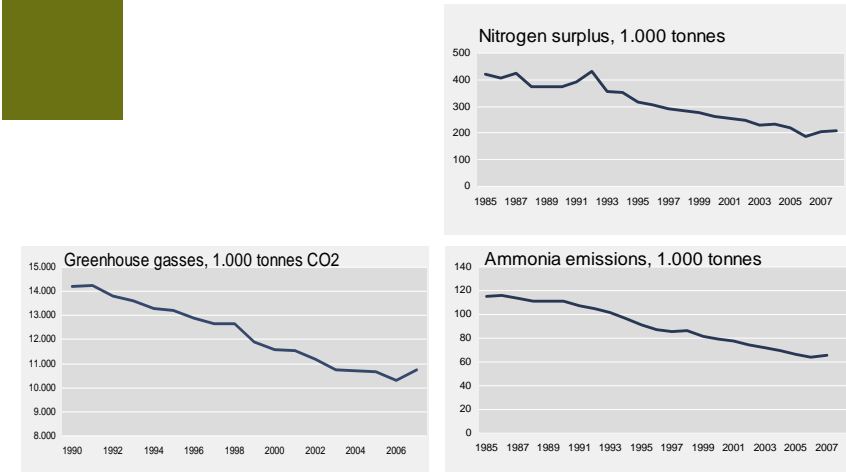
copa\*cogeca  
european farmers european agri-cooperatives

## Yield pr. hectares



copa\*cogeca  
european farmers european agri-cooperatives  
Kilde: FAO

# Danish Reductions in environmental impact



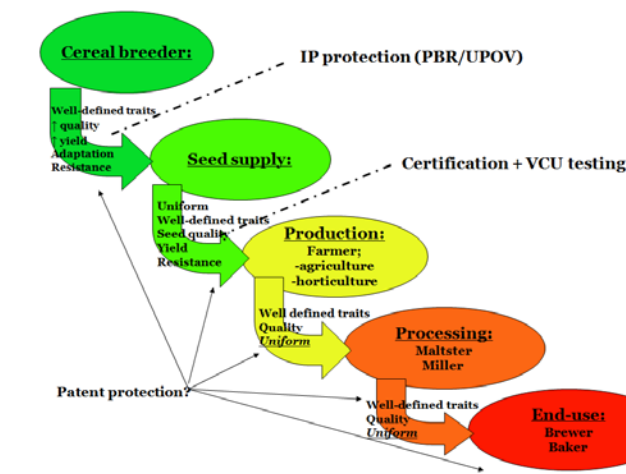
Oversigt for vinterhvede (sorter i Landsforsøg 2010, nyeste data)

Ar	Sortering	Udbytteforseg 1)				Sygdomme (Observationsparceller) 2)					Dyrkningssegenskaber (Observationsparceller) 2)				
		Kerneudb. forholdstal	Stivelse, % i tarstaf	Råproten i/s	Hektoltervægt	Meldug dækning	Septoria dækning	Gulrust dækning	Brunrust dækning	Meldug i øks. dækning	Modnings-dato	Døde planter	Karakter for overvintring	Strå-længde	Lejesed
2010	2010	2010	2010	2010	2010	2010	2010	2009	2008	2005	2010	2007	(kar. 1-9)	(cm)	(kar. 0-10)
1	13011.21	103 (8)	70.0 (8)	11.0 (8)	76.7 (8)	10 (11)	7 (13)	0.3 (2)			12/8 (3)			80 (4)	0.8 (3)
2	Alfaromero	99 (8)	69.9 (8)	10.7 (8)	74.7 (8)	11 (11)	4.6 (13)	0 (2)	23 (3)		11/8 (3)	0.0 (10)		82 (4)	0.7 (3)
3	Alligator	96 (8)	68.5 (8)	11.2 (8)	72.4 (8)	10 (11)	12 (13)	0 (2)			11/8 (3)			75 (4)	1.2 (3)
4	Ambition	100 (8)	69.5 (8)	10.7 (8)	74.8 (8)	14 (11)	4.7 (13)	0 (2)	12 (3)	0.1	11/8 (3)	0.3 (10)		78 (4)	2.3 (3)
5	BA W9	95 (8)	69.3 (8)	11.3 (8)	77.4 (8)	8 (11)	9 (13)	0 (2)			12/8 (3)			75 (4)	0.7 (3)
6	Blanding V-hved	100 (8)	69.5 (8)	10.7 (8)	74.1 (8)	0 (11)	6 (13)	0 (2)	7 (3)	0	12/8 (3)	0.0 (10)		87 (4)	0.2 (3)
7	CPB-T W150	90 (8)	66.1 (8)	11.6 (8)	77.6 (8)	0.1 (11)	8 (13)	0 (2)	1.2 (3)		10/8 (3)			67 (4)	0.3 (3)
8	CPB-T W157	95 (8)	68.8 (8)	11.6 (8)	75.5 (8)	2.0 (11)	12 (13)	0 (2)	1.3 (3)		11/8 (3)			62 (4)	0.3 (3)
9	Comqueror	101 (8)	70.0 (8)	10.3 (8)	74.7 (8)	11 (11)	13 (13)	0 (2)	10 (3)		11/8 (3)	0.4 (10)		77 (4)	0.5 (3)
10	Edmunds	93 (8)	69.0 (8)	10.6 (8)	74.2 (8)	5 (11)	12 (13)	0 (2)	0 (3)		11/8 (3)			65 (4)	1.5 (3)
11	Elvis	99 (8)	69.6 (8)	11.5 (8)	76.0 (8)	4.7 (11)	4.6 (13)	0 (2)		5	11/8 (3)			84 (4)	0.5 (3)
12	Expert	97 (8)	69.8 (8)	10.9 (8)	75.7 (8)	9 (11)	10 (13)	0 (2)	0.3 (3)		12/8 (3)	0.9 (10)		67 (4)	0.5 (3)
13	Frument	99 (8)	69.3 (8)	10.8 (8)	73.2 (8)	5 (11)	8 (13)	0 (2)	5 (3)	1.0	12/8 (3)	0.0 (10)		78 (4)	2.3 (3)
14	Goshawk	94 (8)	68.9 (8)	10.9 (8)	74.0 (8)	3.1 (11)	15 (13)	0 (2)	4.3 (3)		11/8 (3)			66 (4)	0.3 (3)
15	Gravitas	93 (8)	68.9 (8)	11.0 (8)	74.6 (8)	2.7 (11)	6 (13)	0 (2)	0.5 (3)		11/8 (3)			68 (4)	0.3 (3)
16	Hæreford	105 (8)	70.2 (8)	10.5 (8)	75.5 (8)	6 (11)	11 (13)	0 (2)	13 (3)		11/8 (3)	0.1 (10)		77 (4)	1.8 (3)
17	JR Asano	95 (8)	70.0 (8)	11.4 (8)	77.6 (8)	4.5 (11)	14 (13)	0 (2)	3.2 (3)	1.0	10/8 (3)			85 (4)	0.3 (3)
18	Jensen	101 (8)	70.1 (8)	10.6 (8)	76.8 (8)	1.4 (11)	6 (13)	0 (2)	14 (3)		12/8 (3)			83 (4)	1.8 (3)
19	KWS Dacanto	104 (8)	69.4 (8)	11.0 (8)	76.4 (8)	4.4 (11)	8 (13)	0 (2)			11/8 (3)			79 (4)	0.7 (3)
20	KWS Kite	88 (8)	69.5 (8)	11.2 (8)	74.2 (8)	6 (11)	10 (13)	0 (2)	0 (3)		11/8 (3)			73 (4)	0.7 (3)
21	KWS Podium	94 (8)	68.2 (8)	11.8 (8)	77.0 (8)	6 (11)	11 (13)	0 (2)	0.02 (3)		11/8 (3)			65 (4)	0.3 (3)
22	KWS Radius	89 (8)	69.1 (8)	11.7 (8)	77.3 (8)	2.1 (11)	9 (13)	0 (2)			11/8 (3)			79 (4)	0.0 (3)
23	KWS Santiago	100 (8)	69.1 (8)	10.5 (8)	73.8 (8)	7 (11)	14 (13)	0 (2)			14/8 (3)			74 (4)	0.7 (3)
24	KWS V179	96 (8)	68.9 (8)	10.9 (8)	75.9 (8)	3.0 (11)	17 (13)	0 (2)			12/8 (3)			68 (4)	1.0 (3)
25	KWS Yaris	99 (8)	69.6 (8)	10.6 (8)	75.9 (8)	5 (11)	7 (13)	0 (2)	7 (3)		12/8 (3)			78 (4)	0.3 (3)

## Strategy for the Copa-Cogeca's work ahead of the review of the Seed legislation 2011-13

1. **CPVR must be maintained instead of the Patent system**
2. **Maintain the DUS and VCU testing**
3. **The farmers need better varieties and higher yields**
4. **Certification system must be modern and competitive**
5. **New varieties to all regions in EU, not only the big agricultural areas.**
6. **List of unprotected varieties**
7. **Strict regulation of conservation varieties**
8. **FSS must be more simple and fair**
9. **Small farmers' exemption must be maintained**
10. **Maintain the good national systems (FSS)**

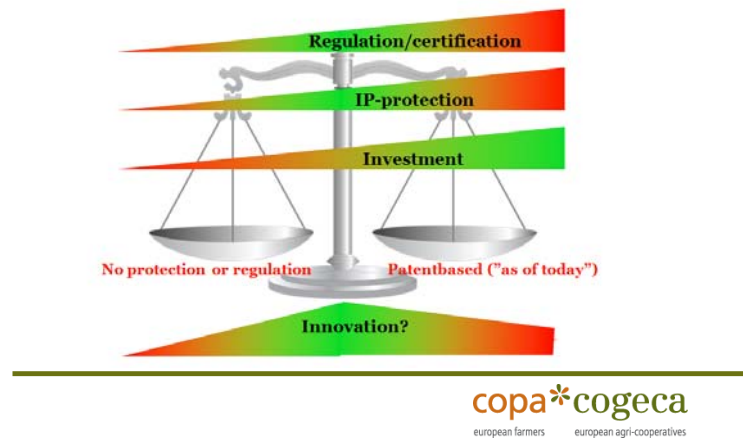
## Why CPVR instead of patents ?





## Balance gives innovation

Future demands for a  
balanced protection

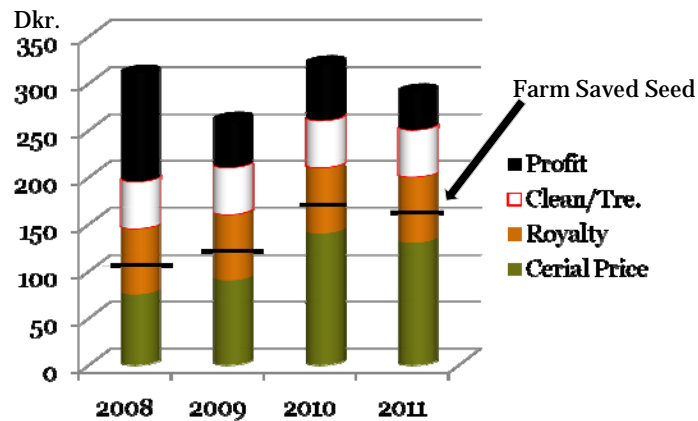


## Research and innovation are necessary more than ever

In the MFF, the EC has proposed to double the  
budget allocated to RTD.

Copa-Cogeca requests that part of it be used to  
improve agriculture productivity in the  
arable crops industry.

## Analyze of the Cereal Seed Price



**copa\*cogeca**  
european farmers european agri-cooperatives

It must be simple to find the best seed to my farm.

- 1. Simple for a farmer to find the best variety in his province**
- 2. Independent testing and advice on the quality of the varieties.**
- 3. Simple for the farmer to find the most profitable seed for his income**
- 4. Simple for the farmer to choose the right seed and variety**
- 5. Simple for the farmer to know and pay for the royalty**
- 6. Simple for the farmer to see that it is practical in his work on the farm**

**copa\*cogeca**  
european farmers european agri-cooperatives

**Thank you for your attention!**



**copa\*cogeca**  
european farmers    european agri-cooperatives