



TWO/48/23

ORIGINAL: English

DATE: August 20, 2015

INTERNATIONAL UNION FOR THE PROTECTION OF NEW VARIETIES OF PLANTS

Geneva

TECHNICAL WORKING PARTY FOR ORNAMENTAL PLANTS AND FOREST TREES**Forty-Eighth Session****Cambridge, United Kingdom, September 14 to 18, 2015**MATTERS TO BE RESOLVED CONCERNING TEST GUIDELINES ADOPTED BY THE TECHNICAL
COMMITTEE

TEST GUIDELINES FOR ALOE

*Document prepared by the Office of the Union**Disclaimer: this document does not represent UPOV policies or guidance*

EXECUTIVE SUMMARY

1. The purpose of this document is to propose amended illustrations for the Test Guidelines for Aloe.
2. The Technical Working Party for Ornamental Plants and Forest Trees (TWO) is invited to consider whether to replace illustrations in the adopted Test Guidelines for Aloe as proposed in this document.

BACKGROUND

3. The TWO, at its forty-seventh session, held in Naivasha, Kenya, from May 19 to 23, 2014, agreed that the Test Guidelines for Aloe (document TG/ALOE(proj.3)) be submitted to the Technical Committee (TC) for adoption at its fifty-first session, held in Geneva from March 23 to 25, 2015 (see document TWO/47/28, Annex IV).
4. The Technical Committee (TC), at its fifty-first session, adopted the Test Guidelines for Aloe on the basis of document TG/ALOE(proj.5) subject to the amendments specified in document TC/51/39 "Report", Annex II, and the linguistic changes recommended by the TC-EDC, as presented in the Annex to this document.
5. In response to the request by the TC, at its fifty-first session, the Leading Expert, Mr. Adriaan de Villiers (South Africa), proposed to replace certain illustrations contained in document TG/ALOE(proj.5).

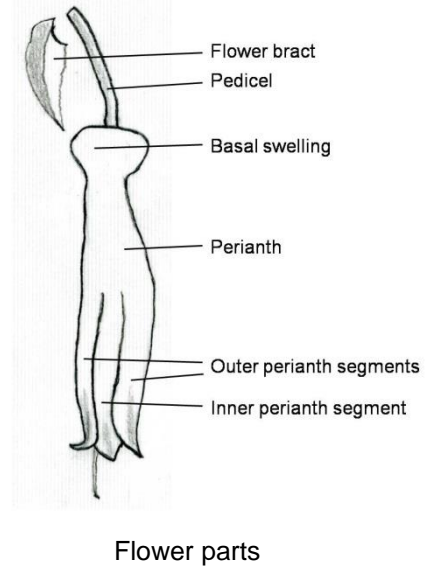
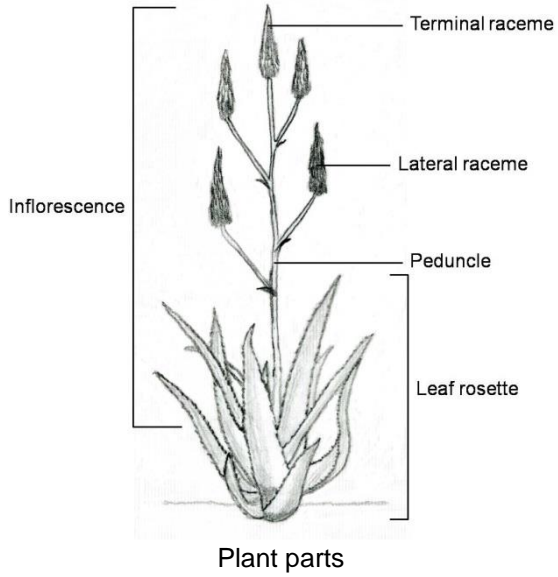
PROPOSAL

6. It is proposed to replace the following illustrations in document TG/ALOE(proj.5):

Proposed New Illustrations

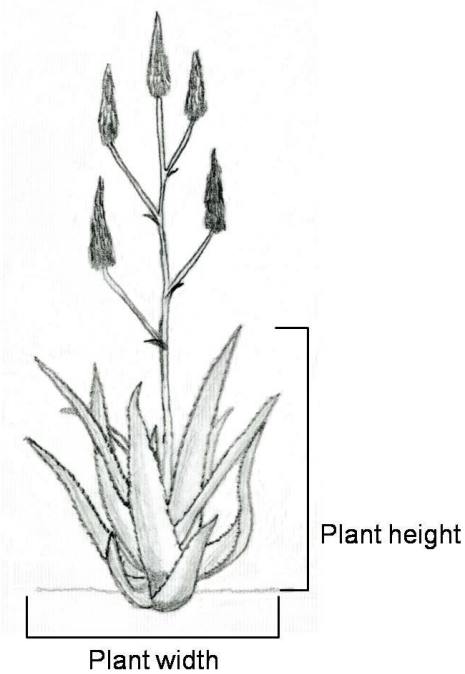
8.1 (f)

(f) Observations on the stamens should be made shortly after dehiscence of the anthers.

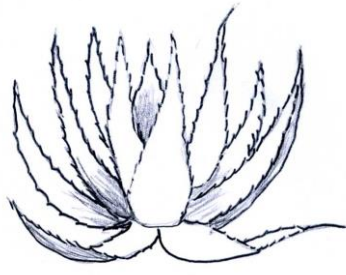


Ad. 1: Plant: height
Ad. 2: Plant: width

Observations should exclude the inflorescence.



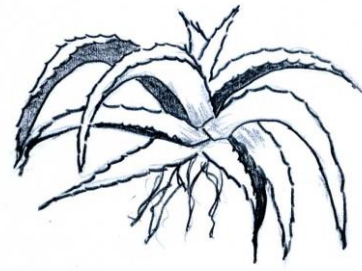
Ad. 8: Leaf: curvature



3
moderately incurved



5
straight



7
moderately recurved

Ad. 12: Leaf: stripes on upper side

(only illustration for state 9 "present" is a proposed new illustration)



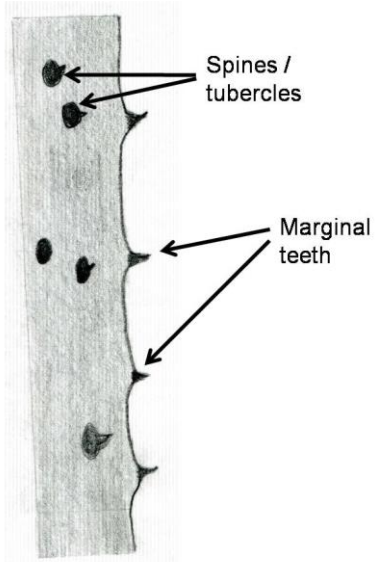
1
absent



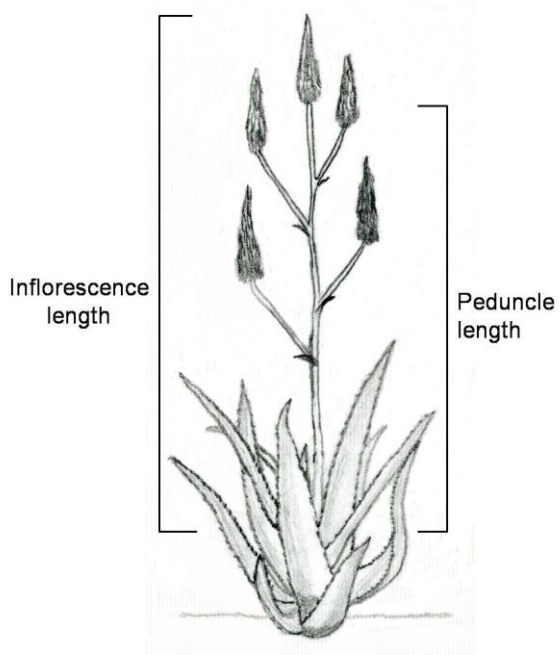
9
present

Ad. 14: Leaf: marginal teeth

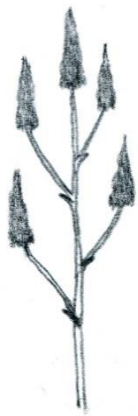
Ad. 16: Leaf: spines or white tubercles



Ad. 20: Inflorescence: length
Ad. 21: Peduncle: length



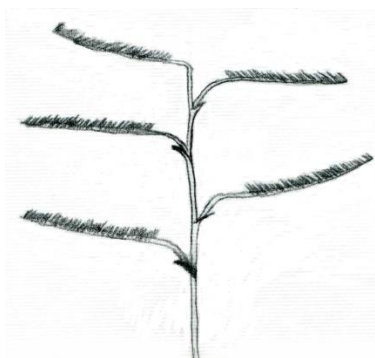
Ad. 23: Lateral raceme: attitude



1
erect



2
semi-erect



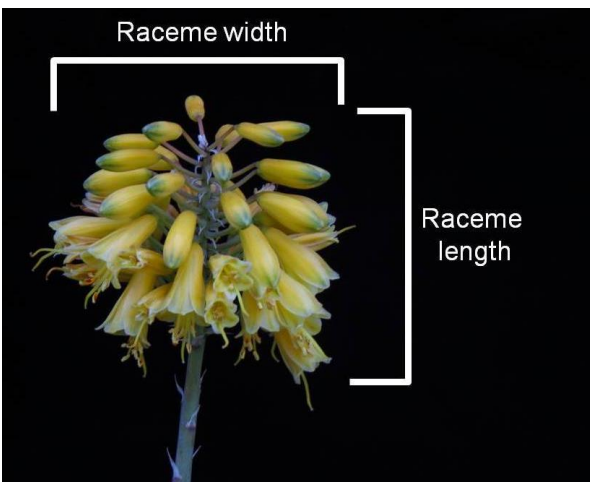
3
horizontal

Ad. 24: Terminal raceme: length of flowering part

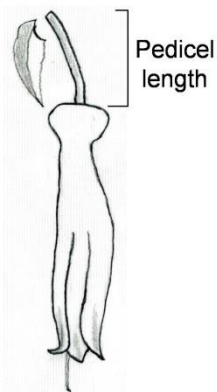
The flowering part includes open flowers and buds.



Ad. 26: Terminal raceme: ratio length/width

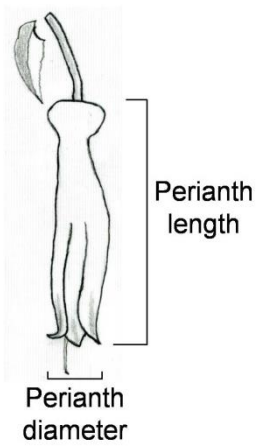


Ad. 35: Pedicel: length



Ad. 38: Perianth: length

Ad. 39: Perianth: diameter



7. The TWO is invited to consider the proposed amended illustrations for the Test Guidelines for Aloe, as presented in paragraph 6 of this document.

[Annex follows]

EXTRACT OF DOCUMENT TC/51/39 "REPORT", ANNEX II

Aloe (<i>Aloe</i> L.)	TG/ALOE(proj.5)
------------------------	-----------------

[...]

(b) Changes proposed by the TC-EDC in March 2015, which are to be included in the document submitted to the TC:

General	Leading Expert to confirm that all IP rights on photos, illustrations and text have been respected
Char. 25	to change name of characteristic back to read "Terminal raceme: shape"
Char. 26	to replace asymmetric scale by "very low" (1) to "very high" (9)
TQ 7.4	to update ASW 16 (where a photograph of the variety is to be provided) according to new wording in TGP/7/4)

[End of document]