

UPOV

TG/ONCID(proj.3)

ORIGINAL: English

DATE: 2010-07-30

**INTERNATIONAL UNION FOR THE PROTECTION OF NEW VARIETIES OF PLANTS**  
GENEVA

**DRAFT****ONCIDIUM**

UPOV Code: ONCID

*Oncidium* Sw. and intergeneric hybrids of  
*Oncidium* Sw.

**GUIDELINES****FOR THE CONDUCT OF TESTS****FOR DISTINCTNESS, UNIFORMITY AND STABILITY**

*prepared by experts from Japan*

*to be considered by the*

*Technical Working Party for Ornamental Plants and Forest Trees  
at its forty-third session, to be held in Cuernavaca, Morelos State, Mexico,  
from September 20 to 24, 2010*

Alternative Names:\*

<i>Botanical name</i>	<i>English</i>	<i>French</i>	<i>German</i>	<i>Spanish</i>
<i>Oncidium</i> Sw. Intergeneric hybrids of <i>Oncidium</i> Sw.	Oncidium			

The purpose of these guidelines (“Test Guidelines”) is to elaborate the principles contained in the General Introduction (document TG/1/3), and its associated TGP documents, into detailed practical guidance for the harmonized examination of distinctness, uniformity and stability (DUS) and, in particular, to identify appropriate characteristics for the examination of DUS and production of harmonized variety descriptions.

**ASSOCIATED DOCUMENTS**

These Test Guidelines should be read in conjunction with the General Introduction and its associated TGP documents.

\* These names were correct at the time of the introduction of these Test Guidelines but may be revised or updated. [Readers are advised to consult the UPOV Code, which can be found on the UPOV Website ([www.upov.int](http://www.upov.int)), for the latest information.]

<u>TABLE OF CONTENTS</u>	<u>PAGE</u>
1. SUBJECT OF THESE TEST GUIDELINES.....	3
2. MATERIAL REQUIRED .....	3
3. METHOD OF EXAMINATION.....	3
3.1 Number of Growing Cycles .....	3
3.2 Testing Place .....	3
3.3 Conditions for Conducting the Examination.....	3
3.4 Test Design .....	4
3.5 Additional Tests .....	4
4. ASSESSMENT OF DISTINCTNESS, UNIFORMITY AND STABILITY .....	4
4.1 Distinctness .....	4
4.2 Uniformity.....	5
4.3 Stability .....	5
5. GROUPING OF VARIETIES AND ORGANIZATION OF THE GROWING TRIAL.....	6
6. INTRODUCTION TO THE TABLE OF CHARACTERISTICS .....	7
6.1 Categories of Characteristics.....	7
6.2 States of Expression and Corresponding Notes.....	7
6.3 Types of Expression.....	8
6.4 Example Varieties .....	8
6.5 Legend.....	8
7. TABLE OF CHARACTERISTICS/TABLEAU DES CARACTÈRES/MERKMALSTABELLE/TABLA DE CARACTERES.....	9
8. EXPLANATIONS ON THE TABLE OF CHARACTERISTICS .....	29
8.1 Explanations covering several characteristics .....	29
8.2 Explanations for individual characteristics .....	29
8.3 Explanation of the origin of example varieties .....	38
9. LITERATURE .....	39
10. TECHNICAL QUESTIONNAIRE.....	40

## 1. Subject of these Test Guidelines

These Test Guidelines apply to all varieties of of *Oncidium* Sw. and intergeneric hybrids of *Oncidium* Sw. of the family Orchidaceae.

## 2. Material Required

2.1 The competent authorities decide on the quantity and quality of the plant material required for testing the variety and when and where it is to be delivered. Applicants submitting material from a State other than that in which the testing takes place must ensure that all customs formalities and phytosanitary requirements are complied with.

2.2 The material is to be supplied in the form of plants that have not previously flowered, ready to show all the characteristics in the first growing season.

2.3 The minimum quantity of plant material, to be supplied by the applicant, should be:

9 young plants.

2.4 The plant material supplied should be visibly healthy, not lacking in vigor, nor affected by any important pest or disease.

2.5 The plant material should not have undergone any treatment which would affect the expression of the characteristics of the variety, unless the competent authorities allow or request such treatment. If it has been treated, full details of the treatment must be given.

## 3. Method of Examination

### 3.1 *Number of Growing Cycles*

The minimum duration of tests should normally be a single growing cycle.

### 3.2 *Testing Place*

Tests are normally conducted at one place. In the case of tests conducted at more than one place, guidance is provided in TGP/9 "Examining Distinctness".

### 3.3 *Conditions for Conducting the Examination*

3.3.1 The tests should be carried out under conditions ensuring satisfactory growth for the expression of the relevant characteristics of the variety and for the conduct of the examination.

3.3.2 Because daylight varies, color determinations made against a color chart should be made either in a suitable cabinet providing artificial daylight or in the middle of the day in a room without direct sunlight. The spectral distribution of the illuminant for artificial daylight should conform with the CIE Standard of Preferred Daylight D 6500 and should fall within the tolerances set out in the British Standard 950, Part I. These determinations should be made with the plant part placed against a white background. The color chart and version used should be specified in the variety description.

### 3.4 *Test Design*

3.4.1 Each test should be designed to result in a total of at least 9 plants.

3.4.2 The design of the tests should be such that plants or parts of plants may be removed for measurement or counting without prejudice to the observations which must be made up to the end of the growing cycle.

### 3.5 *Additional Tests*

Additional tests, for examining relevant characteristics, may be established.

## 4. Assessment of Distinctness, Uniformity and Stability

### 4.1 *Distinctness*

#### 4.1.1 General Recommendations

It is of particular importance for users of these Test Guidelines to consult the General Introduction prior to making decisions regarding distinctness. However, the following points are provided for elaboration or emphasis in these Test Guidelines.

#### 4.1.2 Consistent Differences

The differences observed between varieties may be so clear that more than one growing cycle is not necessary. In addition, in some circumstances, the influence of the environment is not such that more than a single growing cycle is required to provide assurance that the differences observed between varieties are sufficiently consistent. One means of ensuring that a difference in a characteristic, observed in a growing trial, is sufficiently consistent is to examine the characteristic in at least two independent growing cycles.

#### 4.1.3 Clear Differences

Determining whether a difference between two varieties is clear depends on many factors, and should consider, in particular, the type of expression of the characteristic being examined, i.e. whether it is expressed in a qualitative, quantitative, or pseudo-qualitative manner. Therefore, it is important that users of these Test Guidelines are familiar with the recommendations contained in the General Introduction prior to making decisions regarding distinctness.

#### 4.1.4 Number of Plants / Parts of Plants to be Examined

Unless otherwise indicated, all observations for the purposes of distinctness should be made on 9 plants or parts taken from each of 9 plants, disregarding any off-type plants.

#### 4.1.5 Method of Observation

The recommended method of observing the characteristic for the purposes of distinctness is indicated by the following key in the second column of the Table of Characteristics (see document TGP/9 "Examining Distinctness", Section 4 "Observation of characteristics"):

MG: single measurement of a group of plants or parts of plants  
MS: measurement of a number of individual plants or parts of plants  
VG: visual assessment by a single observation of a group of plants or parts of plants  
VS: visual assessment by observation of individual plants or parts of plants

Type of observation: visual (V) or measurement (M)

“Visual” observation (V) is an observation made on the basis of the expert’s judgment. For the purposes of this document, “visual” observation refers to the sensory observations of the experts and, therefore, also includes smell, taste and touch. Visual observation includes observations where the expert uses reference points (e.g. diagrams, example varieties, side-by-side comparison) or non-linear charts (e.g. color charts). Measurement (M) is an objective observation against a calibrated, linear scale e.g. using a ruler, weighing scales, colorimeter, dates, counts, etc.

Type of record: for a group of plants (G) or for single, individual plants (S)

For the purposes of distinctness, observations may be recorded as a single record for a group of plants or parts of plants (G), or may be recorded as records for a number of single, individual plants or parts of plants (S). In most cases, “G” provides a single record per variety and it is not possible or necessary to apply statistical methods in a plant-by-plant analysis for the assessment of distinctness.”

In cases where more than one method of observing the characteristic is indicated in the Table of Characteristics (e.g. VG/MG), guidance on selecting an appropriate method is provided in document TGP/9, Section 4.2.

## 4.2 *Uniformity*

4.2.1 It is of particular importance for users of these Test Guidelines to consult the General Introduction prior to making decisions regarding uniformity. However, the following points are provided for elaboration or emphasis in these Test Guidelines:

4.2.1 For the assessment of uniformity, a population standard of 95% and an acceptance probability of at least 1% should be applied. In the case of a sample size of 9 plants, 1 off-type is allowed.

## 4.3 *Stability*

4.3.1 In practice, it is not usual to perform tests of stability that produce results as certain as those of the testing of distinctness and uniformity. However, experience has demonstrated that, for many types of variety, when a variety has been shown to be uniform, it can also be considered to be stable.

4.3.2 Where appropriate, or in cases of doubt, stability may be further examined by testing a new plant stock to ensure that it exhibits the same characteristics as those shown by the initial material supplied.

## 5. Grouping of Varieties and Organization of the Growing Trial

5.1 The selection of varieties of common knowledge to be grown in the trial with the candidate varieties and the way in which these varieties are divided into groups to facilitate the assessment of distinctness are aided by the use of grouping characteristics.

5.2 Grouping characteristics are those in which the documented states of expression, even where produced at different locations, can be used, either individually or in combination with other such characteristics: (a) to select varieties of common knowledge that can be excluded from the growing trial used for examination of distinctness; and (b) to organize the growing trial so that similar varieties are grouped together.

5.3 The following have been agreed as useful grouping characteristics:

Guidance for the use of grouping characteristics, in the process of examining distinctness, is provided through the General Introduction and document TGP/9 "Examining Distinctness.

- (a) Plant: size (characteristic 1)
- (b) Flower: width in front view (characteristic 24)
- (c) Petal: ground color (characteristic 62) with the following groups:
  - Gr.1: white
  - Gr.2: yellow
  - Gr.3: orange
  - Gr.4: pink
  - Gr.5: red
  - Gr.6: violet
  - Gr.7: brown
- (d) Petal: shading (characteristic 63)
- (e) Petal: spots (characteristic 64)
- (f) Petal: brindle (characteristic 65)
- (g) Petal: banded (characteristic 66)
- (h) Petal: stripes (characteristic 67)
- (i) Petal: edge (characteristic 68)
- (j) Petal: macule (characteristic 69)
- (k) Apical lobe: ground color (characteristic 78) with the following groups:
  - Gr.1: white
  - Gr.2: yellow
  - Gr.3: orange
  - Gr.4: pink
  - Gr.5: red
  - Gr.6: violet
  - Gr.7: brown

## 6. Introduction to the Table of Characteristics

### 6.1 *Categories of Characteristics*

#### 6.1.1 Standard Test Guidelines Characteristics

Standard Test Guidelines characteristics are those which are approved by UPOV for examination of DUS and from which members of the Union can select those suitable for their particular circumstances.

#### 6.1.2 Asterisked Characteristics

Asterisked characteristics (denoted by \*) are those included in the Test Guidelines which are important for the international harmonization of variety descriptions and should always be examined for DUS and included in the variety description by all members of the Union, except when the state of expression of a preceding characteristic or regional environmental conditions render this inappropriate.

### 6.2 *States of Expression and Corresponding Notes*

6.2.1 States of expression are given for each characteristic to define the characteristic and to harmonize descriptions. Each state of expression is allocated a corresponding numerical note for ease of recording of data and for the production and exchange of the description.

6.2.2 In the case of qualitative and pseudo-qualitative characteristics (see Chapter 6.3), all relevant states of expression are presented in the characteristic. However, in the case of quantitative characteristics with 5 or more states, an abbreviated scale may be used to minimize the size of the Table of Characteristics. For example, in the case of a quantitative characteristic with 9 states, the presentation of states of expression in the Test Guidelines may be abbreviated as follows:

State	Note
small	3
medium	5
large	7

However, it should be noted that all of the following 9 states of expression exist to describe varieties and should be used as appropriate:

State	Note
very small	1
very small to small	2
small	3
small to medium	4
medium	5
medium to large	6
large	7
large to very large	8
very large	9

6.2.3 Further explanation of the presentation of states of expression and notes is provided in document TGP/7 "Development of Test Guidelines".

### 6.3 *Types of Expression*

An explanation of the types of expression of characteristics (qualitative, quantitative and pseudo-qualitative) is provided in the General Introduction.

### 6.4 *Example Varieties*

6.4.1 Where appropriate, example varieties are provided to clarify the states of expression of each characteristic.

6.4.2 Some variety denominations are preceded by group names (GREX). General remark: a particular grouping on the basis of known parentage, of which the unit is the GREX, is in long standing use in orchids.

6.4.3 The variety denominations are placed between single quotation marks (e.g. Ella‘Flambeau’).

### 6.5 *Legend*

(\*) Asterisked characteristic – see Chapter 6.1.2

QL Qualitative characteristic – see Chapter 6.3

QN Quantitative characteristic – see Chapter 6.3

PQ Pseudo-qualitative characteristic – see Chapter 6.3

MG, MS, VG, VS – see Chapter 4.1.5

(a)-(d) See Explanations on the Table of Characteristics in Chapter 8.1.

(+) See Explanations on the Table of Characteristics in Chapter 8.2.



7. Table of Characteristics/Tableau des caractères/Merkmalstabelle/Tabla de caracteres

	English	français	deutsch	español	Example Varieties Exemples Beispielssorten Variedades ejemplo	Note/ Nota
<b>1. VG Plant: size</b> (* (+)						
<b>QN</b>	small				Twinkle 'Fragrance Fantasy'	3
	medium				Kinsei 'Abe No.4'	5
	large				'Kurusu'	7
<b>2. VG Plant: attitude of leaves</b> (*						
<b>QN</b>	erect					1
	semi-erect				'Only You'	2
	horizontal				<del>Stardust</del> 'Fairy'	3
	pendulous					4
<b>3. VG Pseudobulb: size</b> (*						
<b>QN</b>	(a) small				'Haru Ichiban'	3
	medium					5
	large				Sang-Chan 'Nihao' 'Shimizu Parasol' Papurikon'	7
<b>4. VG Pseudobulb: shape in longitudinal section</b> (* (+)						
<b>PQ</b>	(a) ovate				Kukoo 'YMC-2' Yellow Days	1
	elliptic				'Haruka' Sunlight Siesta 'Ruru'	2
	circular				Dancing Sunlight 'Ami'	3
	oblate				Kinsei 'Abe No.4'	4

	English	français	deutsch	español	Example Varieties Exemples Beispielssorten Variedades ejemplo	Note/ Nota
<b>5.</b>	<b>VG</b>					
(+)						
	<b>Pseudobulb: shape in cross section</b>					
<b>PQ</b>	(a)	linear			Dancing Sunlight 'Suzy'	1
		broad oblate			Kinsei 'Abe No.4'	2
		narrow oblate			Mayfair 'Yellow Angel'	3
		circular				4
<b>6.</b>	<b>VG</b>					
(*)						
	<b>Pseudobulb: depth of grooving</b>					
<b>QN</b>	(a)	absent or very shallow			Kinsei 'Abe No.4'	1
		shallow			'Kurusu'	2
		deep				3
<b>7.</b>	<b>VG/ MS</b>					
(+)						
	<b>Pseudobulb: number of cataphylls</b>					
<b>QN</b>		few			Aloha Iwanaga 'Fight Yuko'	1
		medium			Sunlight Siesta 'Ruru'	2
		many				3
<b>8.</b>	<b>VG/ MS</b>					
(+)						
	<b>Pseudobulb: number of leaves</b>					
<b>QN</b>		one			Dancing Sunlight 'Ami'	1
		two			'Monshirotyo no Cafe'	2
		three			'Shimizu Parasol Papurikon'	3
		more than three				4

	English	français	deutsch	español	Example Varieties Exemples Beispielssorten Variedades ejemplo	Note/ Nota
<b>9.</b>	<b>VG/ MS</b>					
<b>QN</b>	<b>(b)</b>	short			Twinkle ‘Fragrance Fantasy’	3
		medium			Dancing Sunlight ‘Suzy’	5
		long			‘Shimizu Parasol Papurikon’	7
<b>10.</b>	<b>VG/ MS</b>					
<b>(*)</b>						
<b>QN</b>	<b>(b)</b>	narrow			‘Sakura no Sato’, ‘Yellow Days’	3
		medium			Dancing Sunlight ‘Suzy’	5
		broad				7
<b>11.</b>	<b>VG</b>	<b>Leaf: shape</b>				
<b>(*)</b>						
<b>(+)</b>						
<b>PQ</b>	<b>(b)</b>	narrow lanceolate			<del>Barbie ‘Strawberry Delight’</del> Morning Medley ‘Sakurako’	1
		linear			‘Haruka’ ‘Kaori no Izumi’	2
		narrow elliptic				3
		medium elliptic				4
<b>12.</b>	<b>VG</b>	<b>Leaf: shape in cross section</b>				
<b>QN</b>	<b>(b)</b>	concave			<del>Kinsei</del> ‘Yellow Days’	1
		flat			Ella ‘Flambeau’	2
		convex				3

	English	français	deutsch	español	Example Varieties Exemples Beispielssorten Variedades ejemplo	Note/ Nota
<b>13.</b>	<b>VG</b>	<b>Leaf: intensity of green color</b>				
<b>QN</b>	(c)	light				1
		medium			Sunlight Siesta 'Ruru'	2
		dark			<del>Kinsei</del> Dancing Sunlight 'Nancy'	3
<b>14.</b>	<b>VG</b>	<b>Inflorescence: type</b>				
	(*)					
	(+)					
<b>QL</b>		raceme			'Poco-A-Poco Yellow'	1
		simple panicle			Misaki Wave 'Yurara'	2
		compound panicle			Dancing Sunlight 'Ami'	3
<b>15.</b>	<b>VG</b>	<b>Inflorescence: length</b>				
	/MS					
	(+)					
<b>QN</b>		short				3
		medium			'Monshirotyo no Cafe'	5
		long			'Kurusu'	7
<b>16.</b>	<b>VG/</b>	<b>Excluding varieties</b>				
	<b>MS</b>	<b>with inflorescence</b>				
	(+)	<b>type:raceme:</b>				
		<b>Inflorescence: width</b>				
<b>QN</b>		narrow			Twinkle 'Fragrance Fantasy'	3
		medium			Sunlight Siesta 'Ruru'	5
		broad			'Kurusu'	7
<b>17.</b>	<b>VG/</b>	<b>Inflorescence:</b>				
	<b>MS</b>	<b>number of flowers</b>				
	(*)					
<b>QN</b>		few			<del>Aloha Iwanaga</del>	3
		medium			'Yasukaspa Akane'	5
		many			Sunlight Siesta 'Ruru'	7

	English	français	deutsch	español	Example Varieties Exemples Beispielssorten Variedades ejemplo	Note/ Nota
<b>18.</b>	<b>VG/</b>					
(*)	<b>MS</b>					
(+)						
<b>QN</b>	short				'Sakura no Sato' 'Kaoli no Izumi'	3
	medium				Sunlight Siesta 'Ruru'	5
	long				Ella 'Flambeau'	7
<b>19.</b>	<b>VG/</b>					
(*)	<b>MS</b>					
(+)						
<b>QN</b>	thin				Twinkle 'Fragrance Fantasy'	1
	medium				'Kurusu'	2
	thick					3
<b>20.</b>	<b>VG</b>					
(*)	<b>Peduncle:</b>					
(+)	<b>anthocyanin</b>					
	<b>coloration</b>					
<b>QN</b>	absent or weak				'Monshirotyo no Cafe'	1
	moderate				'Kurusu'	2
	strong				Dancing Sunlight 'Nancy'	3
<b>21.</b>	<b>VG</b>					
(*)	<b>Flower: general</b>					
(+)	<b>appearance of sepals</b>					
<b>QN</b>	incurving				Mayfair 'Yellow Angel'	1
	spreading				<del>Kinsei</del> 'Shimizu Parasol Papurikon'	2
	reflexing				Dancing Sunlight 'Ami'	3

	English	français	deutsch	español	Example Varieties Exemples Beispielssorten Variedades ejemplo	Note/ Nota
<b>22.</b>	<b>VG</b>	<b>Flower: general appearance of petals</b>				
(*)						
(+)						
<b>QN</b>	incurving				<b>Kinsei</b> 'Yellow Days'	1
	spreading				Dancing Sunlight 'Ami'	2
	reflexing				'Shimizu Parasol Papurikon'	3
<b>23.</b>	<b>VG/</b>	<b>Flower: length in front view</b>				
(*)	<b>MS</b>					
(+)						
<b>QN</b>	short				'Kurusu'	3
	medium				Dancing Sunlight 'Ami'	5
	long				Makalii 'Gotoh'	7
<b>24.</b>	<b>VG/</b>	<b>Flower: width in front view</b>				
(*)	<b>MS</b>					
(+)						
<b>QN</b>	narrow				'Kurusu'	3
	medium				Golden Sunset 'Taka'	5
	broad				Ella 'Flambeau'	7
<b>25.</b>	<b>VG</b>	<b>Flower: fragrance</b>				
<b>QL</b>	absent				'Pink Sugar' Sunlight Siesta 'Ruru'	1
	present				'Only One'	9
<b>26.</b>	<b>VG/</b>	<b>Dorsal sepal: length</b>				
(*)	<b>MS</b>					
<b>QN</b>	short				Kukoo 'YMC-2' 'Yellow Days'	1
	medium				Kinsei 'Abe No.4'	2
	long				Makalii 'Gotoh'	3

	English	français	deutsch	español	Example Varieties Exemples Beispielssorten Variedades ejemplo	Note/ Nota
<b>27.</b>	<b>VG/</b>					
<b>(*)</b>	<b>MS</b>					
	<b>Dorsal sepal: width</b>					
<b>QN</b>	narrow				‘Kurisu’	1
	medium				Kukoo ‘YMC-2’ Morning Medley ‘Sakurako’	2
	broad				Kinsei ‘Abe No.4’	3
<b>28.</b>	<b>VG</b>					
<b>(*)</b>	<b>Dorsal sepal: shape</b>					
<b>(+)</b>						
<b>PQ</b>	lanceolate				‘Shell white’	1
	ovate				Ella ‘Flambeau’	2
	linear				Sunlight Siesta ‘Ota’	3
	narrow elliptic				‘Haruka’ Dancing Sunlight ‘Nancy’	4
	medium elliptic				Misaki Wave ‘Yurara’ ‘Yellow Days’	5
	obovate				‘Kaori no Izumi’	6
<b>29.</b>	<b>VG</b>					
<b>(*)</b>	<b>Dorsal sepal:</b>					
<b>(+)</b>	<b>curvature of</b>					
	<b>longitudinal axis</b>					
<b>QN</b>	strongly incurving					1
	moderately incurving				Sang-Chan ‘Nihao’ ‘Yellow Days’	3
	straight				Makalii ‘Gotoh’	5
	moderately recurving				Ella ‘Flambeau’	7
	strongly recurving					9

	English	français	deutsch	español	Example Varieties Exemples Beispielssorten Variedades ejemplo	Note/ Nota
<b>30.</b>	<b>VG Dorsal sepal: cross section</b>					
(+)						
<b>QN</b>	strongly concave					1
	moderately concave				Stardust ‘Snow’	3
	flat				Kukoo ‘YMC-2’ ‘Only You’	5
	moderately convex				‘Shell white’ ‘Yellow Days’	7
	strongly convex					9
<b>31.</b>	<b>VG Dorsal sepal: undulation of margin</b>					
<b>QL</b>	absent or weak				‘Only You’	1
	moderate				‘Yellow Days’	2
	strong					3
<b>32.</b>	<b>VG Dorsal sepal: ground color</b>					
(*)						
<b>PQ</b>	(c) RHS Colour Chart (indicate reference number)					
<b>33.</b>	<b>VG Dorsal sepal: diffused over color (if present)</b>					
(+)						
<b>PQ</b>	(c) RHS Colour Chart (indicate reference number)					
<b>34.</b>	<b>VG Dorsal sepal: color of spots (if present)</b>					
(+)						
<b>PQ</b>	(c) RHS Colour Chart (indicate reference number)					



	English	français	deutsch	español	Example Varieties Exemples Beispielssorten Variedades ejemplo	Note/ Nota
<b>35.</b>	<b>VG Dorsal sepal: color of brindle (if present)</b>					
(+)						
<b>PQ</b>	(c) RHS Colour Chart (indicate reference number)					
<b>36.</b>	<b>VG Dorsal sepal: color of bands (if present)</b>					
(+)						
<b>PQ</b>	(c) RHS Colour Chart (indicate reference number)					
<b>37.</b>	<b>VG Dorsal sepal: color of stripes (if present)</b>					
(+)						
<b>PQ</b>	(c) RHS Colour Chart (indicate reference number)					
<b>38.</b>	<b>VG Dorsal sepal: color of margin (if present)</b>					
(+)						
<b>PQ</b>	(c) RHS Colour Chart (indicate reference number)					
<b>39.</b>	<b>VG Dorsal sepal: color of macule (if present)</b>					
(+)						
<b>PQ</b>	(c) RHS Colour Chart (indicate reference number)					
<b>40.</b>	<b>VG/ Lateral sepal: length</b>					
(*)	<b>MS</b>					
<b>QN</b>	short				Kukoo 'YMC-2' 'Yellow Days'	1
	medium				Kinsei 'Abe No.4'	2
	long				Makalii 'Gotoh'	3

	English	français	deutsch	español	Example Varieties Exemples Beispielssorten Variedades ejemplo	Note/ Nota
<b>41.</b>	<b>VG/</b>					
<b>(*)</b>	<b>MS</b>					
	<b>Lateral sepal: width</b>					
<b>QN</b>	narrow				Dancing Sunlight 'Ami'	1
	medium				Ella 'Flambeau'	2
	broad				Makalii 'Gotoh'	3
<b>42.</b>	<b>VG</b>					
<b>(*)</b>	<b>Lateral sepal: shape</b>					
<b>(+)</b>						
<b>PQ</b>	lanceolate				Dancing Sunlight 'Suzy'	1
	ovate				Makalii 'Gotoh'	2
	elliptic					3
	obovate				'Yasukasupa Koharu'	4
	broad obovate				Kukoo 'YMC-2'	5
	curving obovate				'Only You'	6
<b>43.</b>	<b>VG</b>					
<b>(*)</b>	<b>Lateral sepal:</b>					
<b>(+)</b>	<b>curvature of</b>					
	<b>longitudinal axis</b>					
<b>QN</b>	strongly incurving					1
	moderately incurving				'Haruka' 'Yellow Days'	3
	straight				'Only You'	5
	moderately recurving				Makalii 'Gotoh'	7
	strongly recurving				'Pink Sugar' Dancing Sunlight 'Nancy'	9

	English	français	deutsch	español	Example Varieties Exemples Beispielssorten Variedades ejemplo	Note/ Nota
<b>44.</b>	<b>VG Lateral sepal: cross section</b>					
(+)						
<b>QN</b>	strongly concave					1
	moderately concave				Stardust 'Snow'	3
	flat				Ella 'Flambeau'	5
	moderately convex				Golden Fancy Charm	7
	strongly convex					9
<b>45.</b>	<b>VG Lateral sepal: twisting</b>					
<b>QN</b>	absent or weak				Dancing Sunlight 'Ami'	1
	moderate					2
	strong					3
<b>46.</b>	<b>VG Lateral sepal: undulation of margin</b>					
(*)						
<b>QN</b>	absent or weak				'Haruka' 'Kaori no Izumi'	1
	moderate				'Monshirotyo no Cafe'	2
	strong					3
<b>47.</b>	<b>VG Lateral sepal: ground color</b>					
(*)						
<b>PQ</b>	(c) RHS Colour Chart (indicate reference number)					

	English	français	deutsch	español	Example Varieties Exemples Beispielssorten Variedades ejemplo	Note/ Nota
<b>48.</b>	<b>VG Lateral sepal: diffused over color (if present)</b>					
(+)						
<b>PQ</b>	(c) RHS Colour Chart (indicate reference number)					
<b>49.</b>	<b>VG Lateral sepal: color of spots (if present)</b>					
(+)						
<b>PQ</b>	(c) RHS Colour Chart (indicate reference number)					
<b>50.</b>	<b>VG Lateral sepal: color of brindle (if present)</b>					
(+)						
<b>PQ</b>	(c) RHS Colour Chart (indicate reference number)					
<b>51.</b>	<b>VG Lateral sepal: color of bands (if present)</b>					
(+)						
<b>PQ</b>	(c) RHS Colour Chart (indicate reference number)					
<b>52.</b>	<b>VG Lateral sepal: color of stripes (if present)</b>					
(+)						
<b>PQ</b>	(c) RHS Colour Chart (indicate reference number)					
<b>53.</b>	<b>VG Lateral sepal: color of margin (if present)</b>					
(+)						
<b>PQ</b>	(c) RHS Colour Chart (indicate reference number)					

	English	français	deutsch	español	Example Varieties Exemples Beispielssorten Variedades ejemplo	Note/ Nota
<b>54.</b>	<b>VG</b>	<b>Lateral sepal: color of macule (if present)</b>				
(+)						
<b>PQ</b>	(c)	RHS Colour Chart (indicate reference number)				
<b>55.</b>	<b>VG/</b>	<b>Petal: length</b>				
(*)	<b>MS</b>					
<b>QN</b>	short				'Haruka' 'Fight Yuko'	1
	medium				Ella 'Flambeau'	2
	long				Makalii 'Gotoh'	3
<b>56.</b>	<b>VG/</b>	<b>Petal: width</b>				
(*)	<b>MS</b>					
<b>QN</b>	narrow				'Only You'	1
	medium				<del>Potpourri</del> 'Fight Yuko'	2
	broad				Kinsei 'Abe No.4'	3
<b>57.</b>	<b>VG</b>	<b>Petal: shape</b>				
(*)						
(+)						
<b>PQ</b>	ovate					1
	linear				<del>Golden Sunset 'Taka'</del> Sunlight Siesta 'Ota'	2
	elliptic					3
	oblanceolate				Dancing Sunlight 'Ami'	4
	broad obovate				Yasukasupa Komachi	5

	English	français	deutsch	español	Example Varieties Exemples Beispielssorten Variedades ejemplo	Note/ Nota
<b>58.</b>	<b>VG</b>					
(*)	<b>Petal: curvature of longitudinal axis</b>					
(+)						
<b>QN</b>	strongly incurving					1
	moderately incurving				Kukoo ‘YMC-2’ ‘Yellow Days’	3
	straight				‘Kaori no Izumi’	5
	moderately recurving				Dancing Sunlight ‘Ami’	7
	strongly recurving					9
<b>59.</b>	<b>VG</b>					
(+)	<b>Petal: cross section</b>					
<b>QN</b>	strongly concave					1
	moderately concave				<del>Stardust</del> ‘Snow’	3
	flat				Kukoo ‘YMC-2’ ‘Yellow Days’	5
	moderately convex				‘Shell white’ ‘Monshirotyo no Cafe’	7
	strongly convex				<del>Potpourri</del>	9
<b>60.</b>	<b>VG</b>					
<b>QN</b>	absent or weak				Dancing Sunlight ‘Ami’	1
	moderate					2
	strong					3
<b>61.</b>	<b>VG</b>					
<b>QN</b>	absent or weak				‘Haruka’ Sunlight Siesta ‘Ruru’	1
	moderate				‘Yellow Days’	2
	strong					3

	English	français	deutsch	español	Example Varieties Exemples Beispielssorten Variedades ejemplo	Note/ Nota
<b>62.</b>	<b>VG</b>					
(*)						
<b>PQ</b>	(c)				RHS Colour Chart (indicate reference number)	
<b>63.</b>	<b>VG</b>					
(+)					<b>Petal: diffused over color (if present)</b>	
<b>PQ</b>	(c)				RHS Colour Chart (indicate reference number)	
<b>64.</b>	<b>VG</b>					
(+)					<b>Petal: color of spots (if present)</b>	
<b>PQ</b>	(c)				RHS Colour Chart (indicate reference number)	
<b>65.</b>	<b>VG</b>					
(+)					<b>Petal: color of brindle (if present)</b>	
<b>PQ</b>	(c)				RHS Colour Chart (indicate reference number)	
<b>66.</b>	<b>VG</b>					
(+)					<b>Petal: color of bands (if present)</b>	
<b>PQ</b>	(c)				RHS Colour Chart (indicate reference number)	
<b>67.</b>	<b>VG</b>					
(+)					<b>Petal: color of stripes (if present)</b>	
<b>PQ</b>	(c)				RHS Colour Chart (indicate reference number)	
<b>68.</b>	<b>VG</b>					
(+)					<b>Petal: color of margin (if present)</b>	
<b>PQ</b>	(c)				RHS Colour Chart (indicate reference number)	

	English	français	deutsch	español	Example Varieties Exemples Beispielssorten Variedades ejemplo	Note/ Nota
<b>69.</b>	<b>VG</b>					
(+)	<b>Petal: color of macule (if present)</b>					
<b>PQ</b>	(c)	RHS Colour Chart (indicate reference number)				
<b>70.</b>	<b>VG/</b>	<b>Lip: length</b>				
(*)	<b>MS</b>					
(+)						
<b>QN</b>	short				Dancing Sunlight 'Ami'	1
	medium				Makalii 'Gotoh'	2
	long				Ella 'Flambeau'	3
<b>71.</b>	<b>VG/</b>	<b>Lip: width</b>				
(*)	<b>MS</b>					
(+)						
<b>QN</b>	narrow				Makalii 'Gotoh' 'Kaoli no Izumi'	1
	medium				<del>Golden Sunset 'Taka'</del> 'Monshirotyo no Cafe'	2
	broad				Ella 'Flambeau'	3
<b>72.</b>	<b>VG</b>	<b>Lip: size of lateral lobe in relation to apical lobe</b>				
(*)						
(+)						
<b>QN</b>	smaller				Misaki Wave 'Yurara' 'Shimizu Prasol Papurikon'	1
	same size				Dancing Sunlight 'Ami'	2
	larger				'Haruka' 'Only One'	3
<b>73.</b>	<b>VG</b>	<b>Lip: undulation of margin</b>				
<b>QN</b>	absent or weak				Dancing Sunlight 'Ami'	1
	moderate					2
	strong					3



	English	français	deutsch	español	Example Varieties Exemples Beispielssorten Variedades ejemplo	Note/ Nota
<b>74.</b>	<b>VG Apical lobe: shape</b>					
(*)						
(+)						
<b>PQ</b>	rhombic				‘Only You’	1
	circular					2
	oblate				<del>Shangri la</del>	3
	flabellate				‘Pink Sugar’ ‘Monshirotyo no Cafe’	4
	obdeltate					5
<b>75.</b>	<b>VG Apical lobe: indentation of apex</b>					
(*)						
(+)						
<b>QN</b>	absent or very weak				‘Yasukasupa Akane’	1
	weak				Dancing Sunlight ‘Ami’	2
	medium				‘Pink Sugar’ ‘Shimizu Prasol Papurikon’	3
	strong				‘Haruka’ ‘Yellow Days’	4
<b>76.</b>	<b>VG Apical lobe: curvature of longitudinal axis</b>					
(*)						
<b>QN</b>	incurving				Mayfair ‘Yellow Angel’ ‘Yellow Days’	1
	straight				‘Pink Sugar’ ‘Shimizu Prasol Papurikon’	2
	recurving				<del>Kinsei</del> ‘Only You’	3

	English	français	deutsch	español	Example Varieties Exemples Beispielssorten Variedades ejemplo	Note/ Nota
<b>77.</b>	<b>VG Apical lobe: cross section</b>					
<b>QN</b>	concave				‘Kaori no Izumi’	1
	flat				Kinsei ‘Abe No.4’	2
	convex				‘Only You’	3
<b>78. (*)</b>	<b>VG Apical lobe: ground color</b>					
<b>PQ</b>	(c) RHS Colour Chart (indicate reference number)					
<b>79. (+)</b>	<b>VG Apical lobe: diffused over color (if present)</b>					
<b>PQ</b>	(c) RHS Colour Chart (indicate reference number)					
<b>80. (+)</b>	<b>VG Apical lobe: color of spots (if present)</b>					
<b>PQ</b>	(c) RHS Colour Chart (indicate reference number)					
<b>81. (+)</b>	<b>VG Apical lobe: color of brindle (if present)</b>					
<b>PQ</b>	(c) RHS Colour Chart (indicate reference number)					
<b>82. (+)</b>	<b>VG Apical lobe: color of bands (if present)</b>					
<b>PQ</b>	(c) RHS Colour Chart (indicate reference number)					
<b>83. (+)</b>	<b>VG Apical lobe: color of margin (if present)</b>					
<b>PQ</b>	(c) RHS Colour Chart (indicate reference number)					

	English	français	deutsch	español	Example Varieties Exemples Beispielssorten Variedades ejemplo	Note/ Nota
<b>84.</b>	<b>VG Lateral lobe: ground color</b>					
<b>PQ</b>	(c) RHS Colour Chart (indicate reference number)					
<b>85.</b>	<b>VG Lateral lobe: diffused over color (if present)</b>					
(+)						
<b>PQ</b>	(c) RHS Colour Chart (indicate reference number)					
<b>86.</b>	<b>VG Lateral lobe: color of spots (if present)</b>					
(+)						
<b>PQ</b>	(c) RHS Colour Chart (indicate reference number)					
<b>87.</b>	<b>VG Lateral lobe: color of brindle (if present)</b>					
(+)						
<b>PQ</b>	(c) RHS Colour Chart (indicate reference number)					
<b>88.</b>	<b>VG Lateral lobe: color of bands (if present)</b>					
(+)						
<b>PQ</b>	(c) RHS Colour Chart (indicate reference number)					
<b>89.</b>	<b>VG Lateral lobe: color of margin (if present)</b>					
(+)						
<b>PQ</b>	(c) RHS Colour Chart (indicate reference number)					

---

	English	français	deutsch	español	Example Varieties Exemples Beispielssorten Variedades ejemplo	Note/ Nota
<b>90. VG Callus: color</b>						
<b>PQ</b>	white					1
	yellow					2
	orange					3
	red					5
	red purple					4
	yellow brown					6
	brown					7

---

## 8. Explanations on the Table of Characteristics

### 8.1 Explanations covering several characteristics

Unless otherwise noted, all characteristics should be observed when 80% of flowers have opened on the first inflorescence.

**Ground color is the color of the inner tissue layer, which in most case develops first.**

Characteristics containing the following key in the second column of the Table of Characteristics should be examined as indicated below:

- (a) Observations on pseudobulb should be made on the flowering pseudobulb.
- (b) Observations on leaf should be made on the longest leaf of a flowering pseudobulb.
- (c) Observations on the color of leaf should be made on the upper side, and on the sepal, petal, apical lobe of lip and lateral lobe of lip should be made on the inner side.

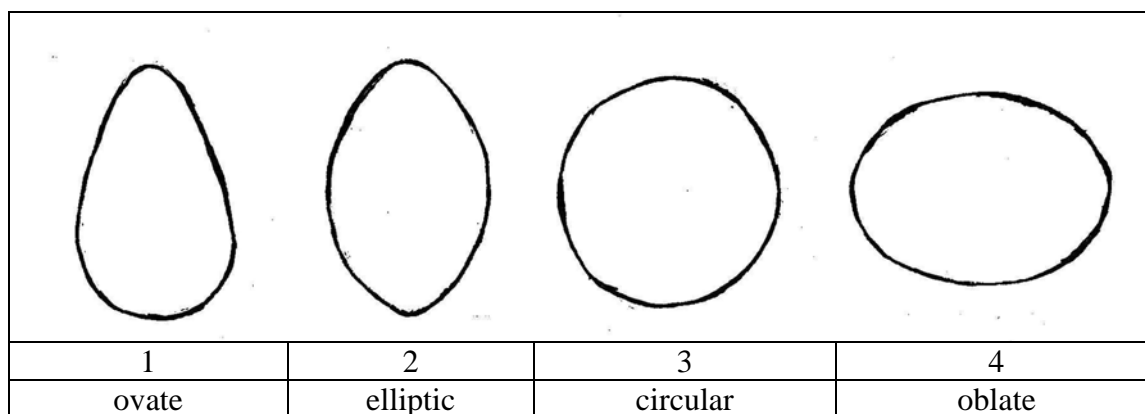
### 8.2 Explanations for individual characteristics

#### Ad. 1: Plant: size

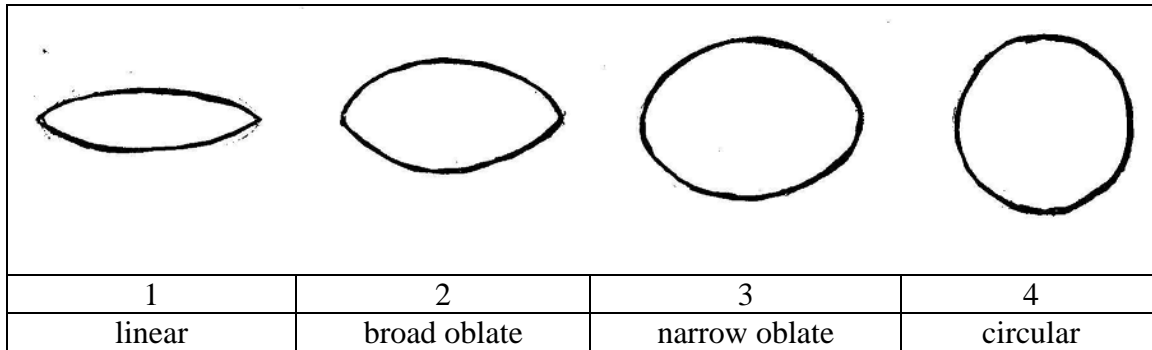
The size of plant is evaluated by observation of whole plant size including leaf, peduncle and inflorescence.

#### Ad. 4: Pseudobulb: shape in longitudinal section

The shape in longitudinal section should be observed shape in longitudinal section of the most broad part of pseudobulb.

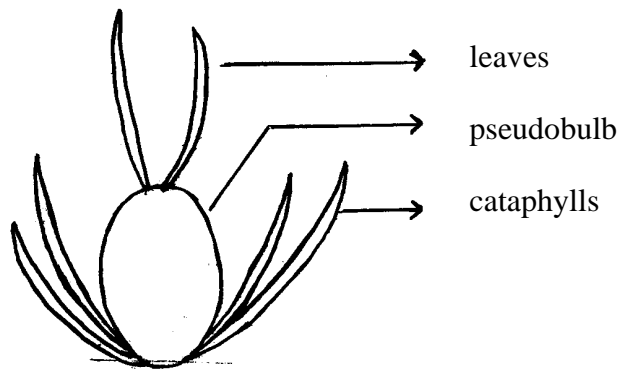


Ad. 5: Pseudobulb: shape in cross section

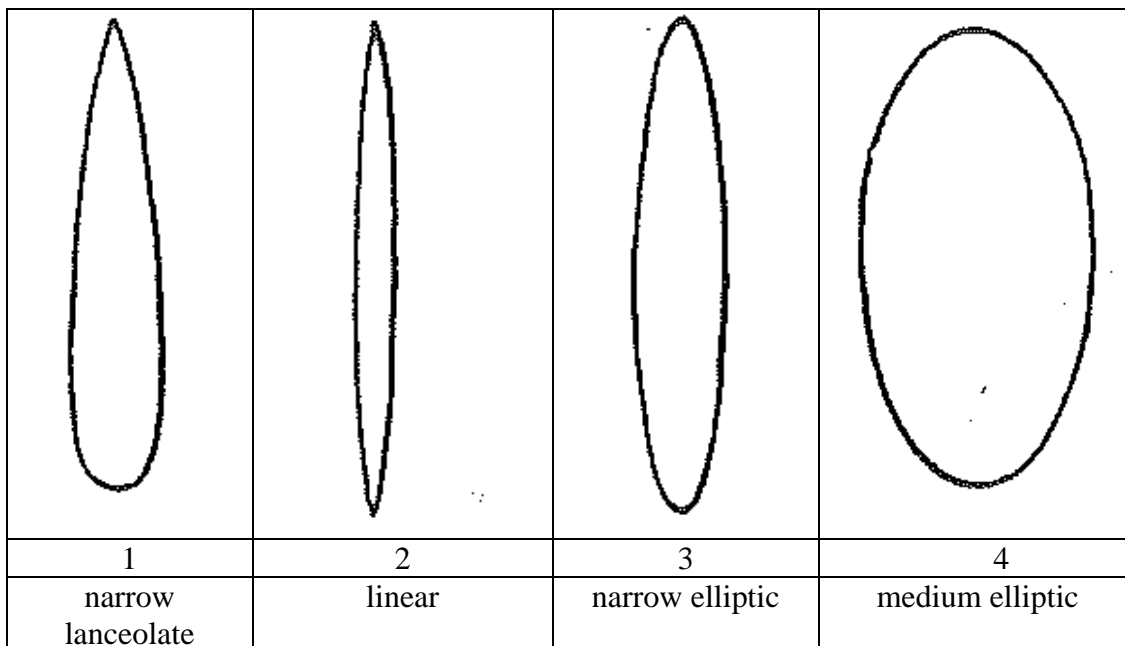


Ad. 7: Pseudobulb: number of cataphylls

Ad. 8: Pseudobulb: number of leaves



Ad. 11: Leaf : shape

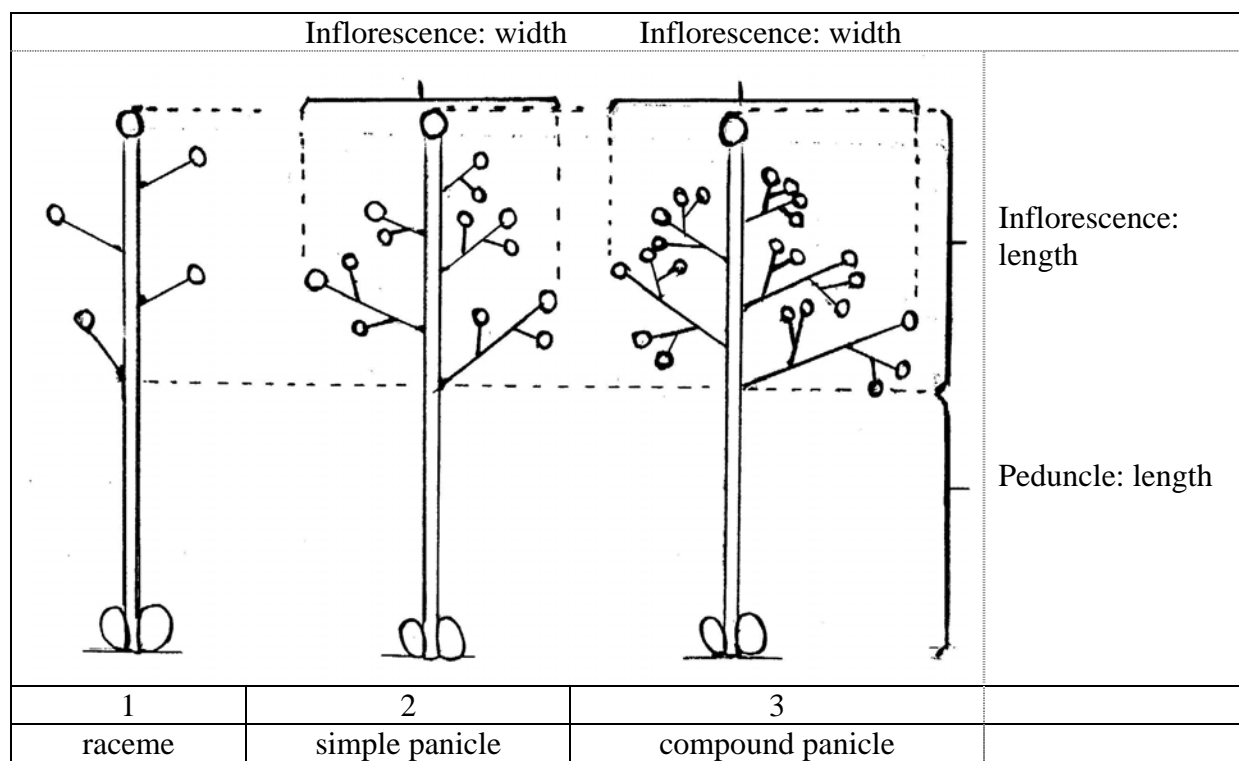


Ad. 14: Inflorescence: type

Ad. 15: Inflorescence: length

Ad. 16: Excluding varieties with inflorescence: Inflorescence : width

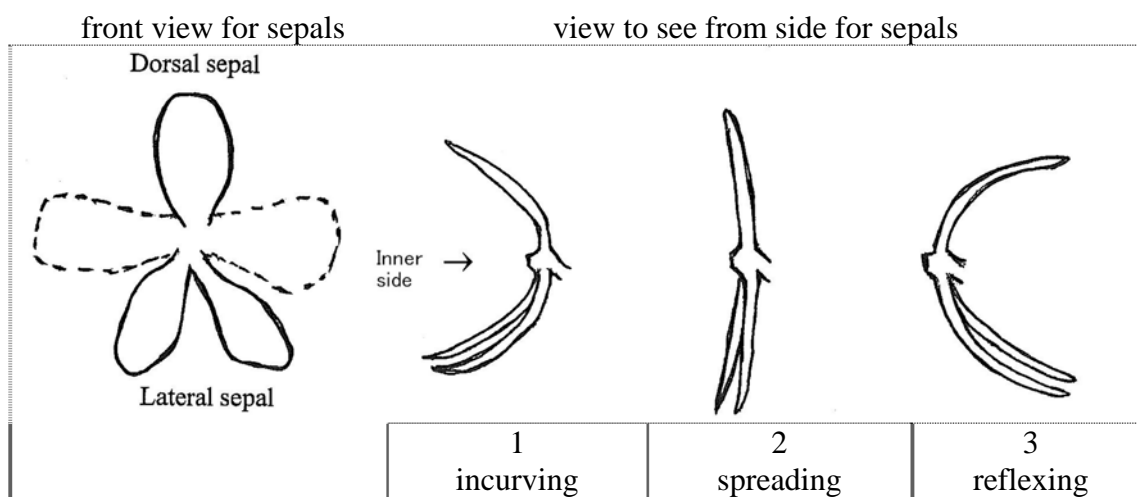
Ad. 18: Peduncle : length



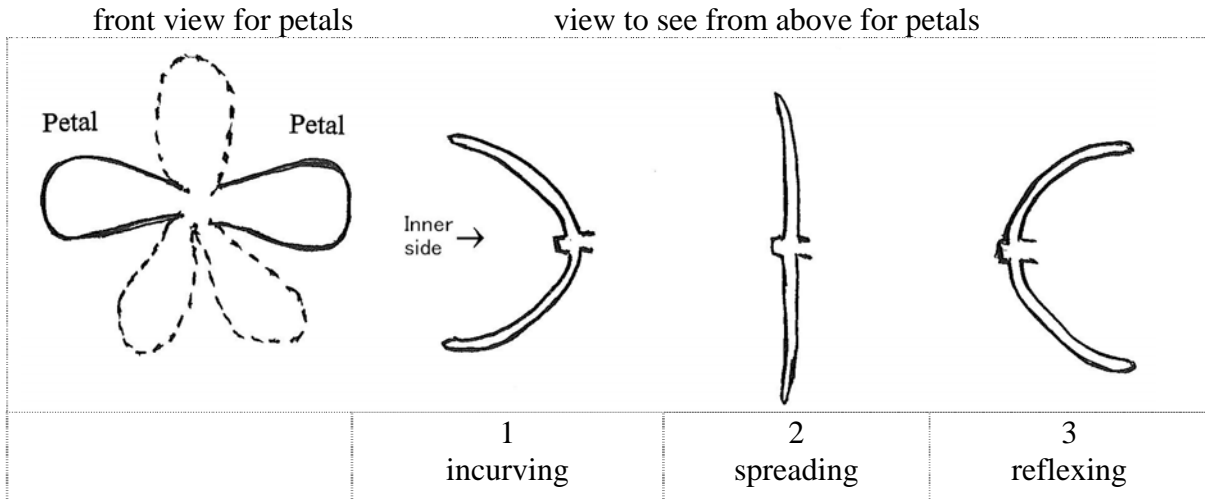
Ad. 20: Peduncle: anthocyanin coloration

Anthocyanin coloration should be observed on the area of strongest coloration along whole length of peduncle.

Ad. 21: Flower: general appearance of sepals

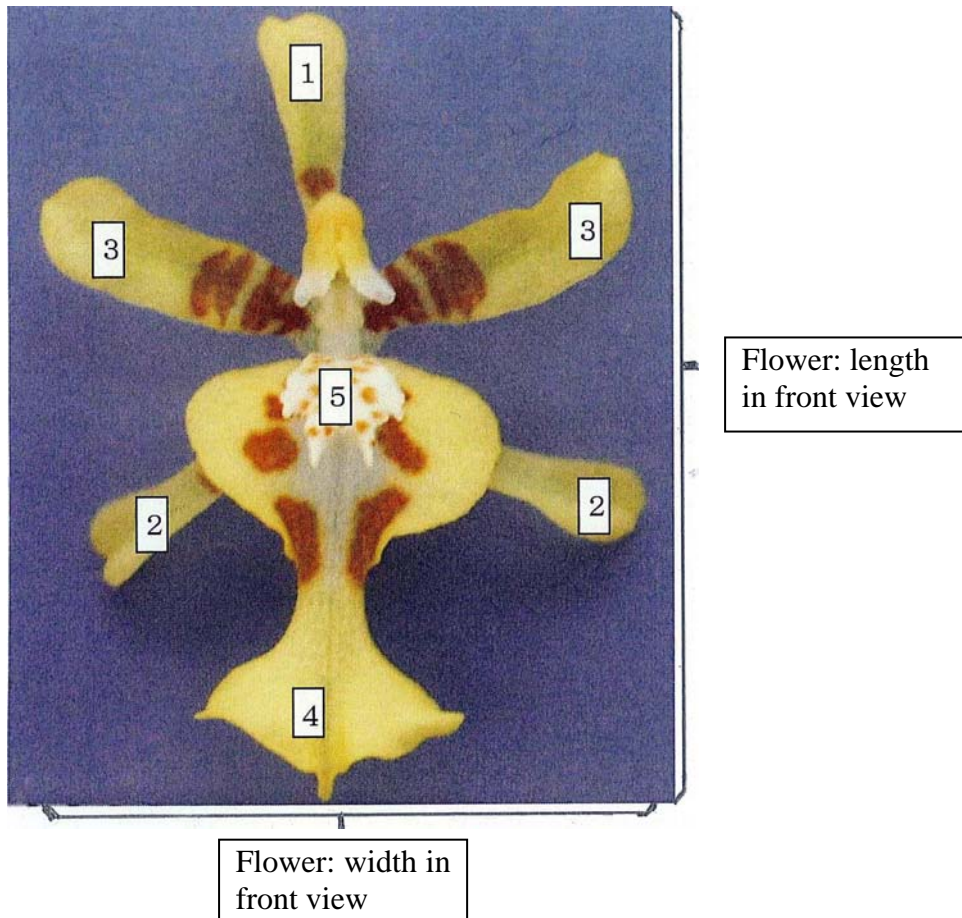


Ad. 22: Flower: general appearance of petals



Ad. 23: Flower: length in front view

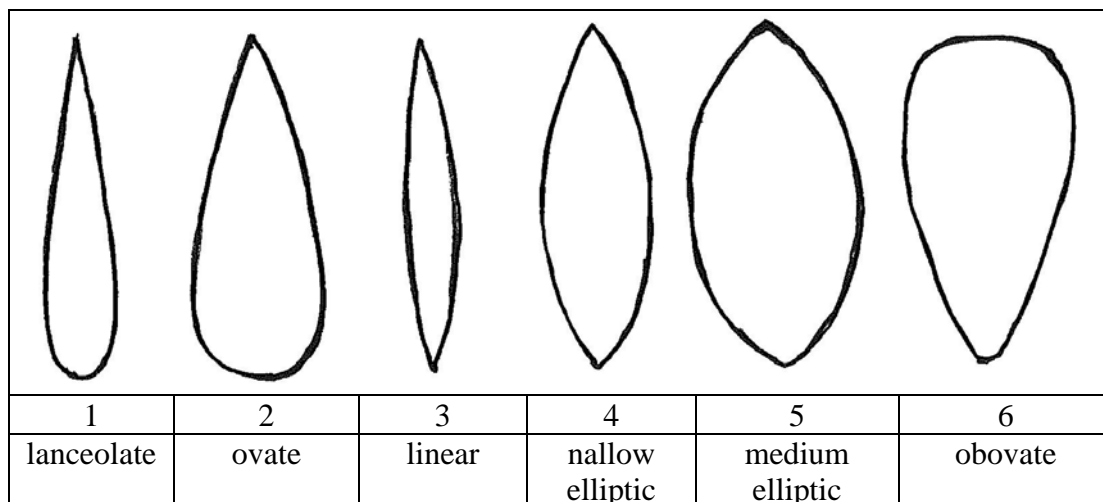
Ad. 24: Flower: width in front view



- 1 Dorsal sepal    2 Lateral sepal
- 3 Petal            4 Lip                5 Callus



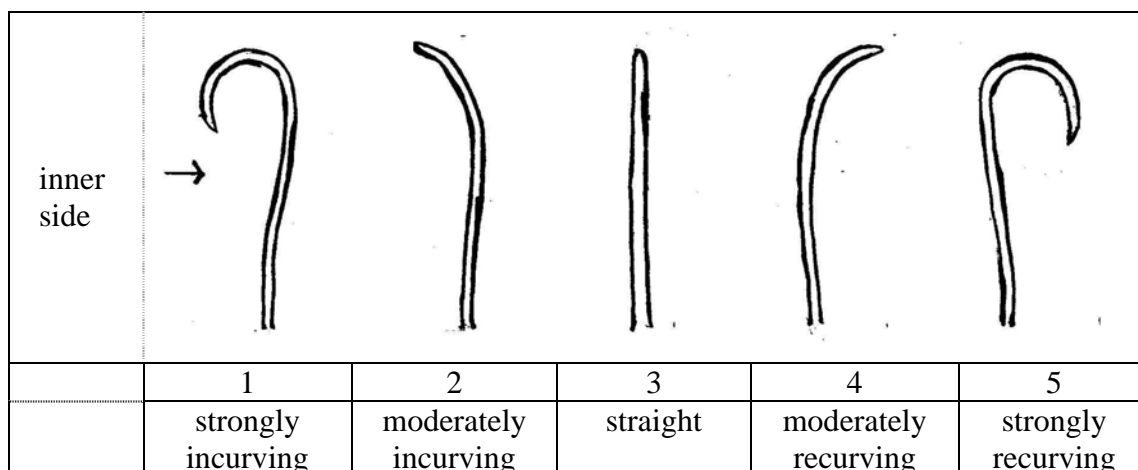
Ad. 28: Dorsal sepal: shape



Ad. 29: Dorsal sepal: curvature of longitudinal axis

Ad. 43: Lateral sepal: curvature of longitudinal axis

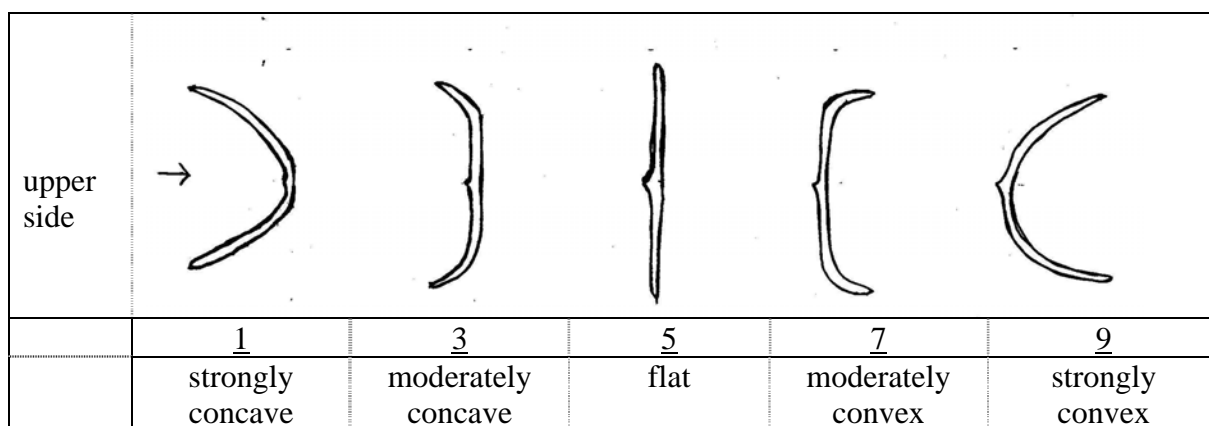
Ad. 58: Petal: curvature of longitudinal axis



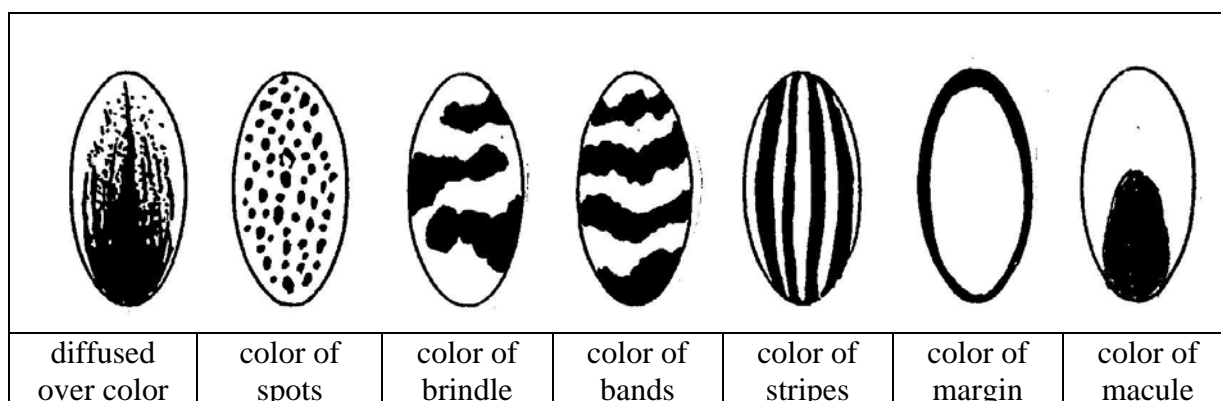
Ad. 30: Dorsal sepal: cross section

Ad. 44: Lateral sepal: cross section

Ad. 59: Petal: cross section



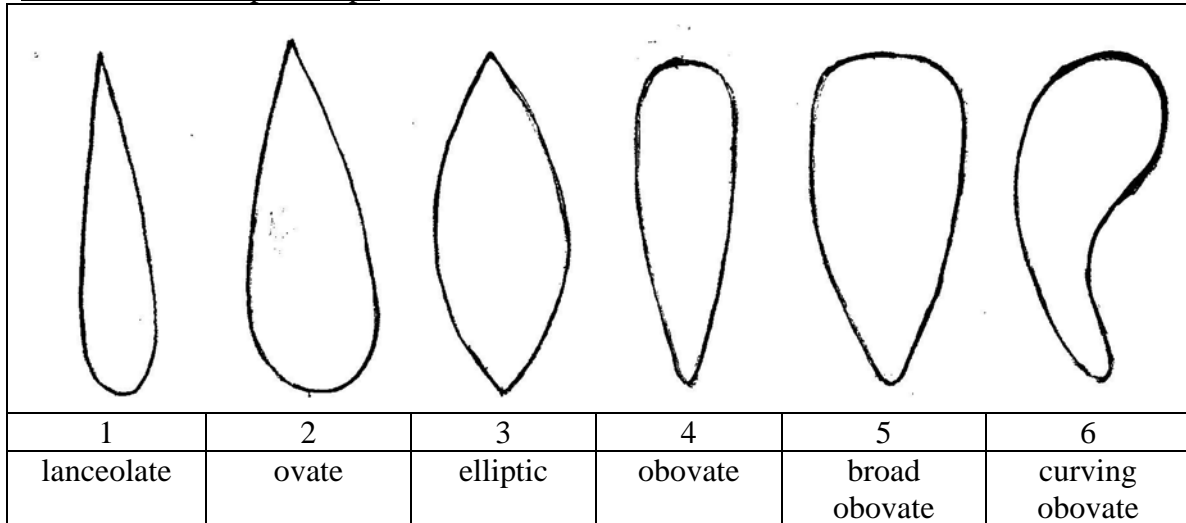
- Ad. 33: Dorsal sepal: diffused over color (if present)  
Ad. 34: Dorsal sepal: color of spots (if present)  
Ad. 35: Dorsal sepal: color of brindle (if present)  
Ad. 36: Dorsal sepal: color of bands (if present)  
Ad. 37: Dorsal sepal: color of stripes (if present)  
Ad. 38: Dorsal sepal: color of margin (if present)  
Ad. 39: Dorsal sepal: color of macule (if present)  
Ad. 48: Lateral sepal: diffused over color (if present)  
Ad. 49: Lateral sepal: color of spots (if present)  
Ad. 50: Lateral sepal: color of brindle (if present)  
Ad. 51: Lateral sepal: color of bands (if present)  
Ad. 52: Lateral sepal: color of stripes (if present)  
Ad. 53: Lateral sepal: color of margin (if present)  
Ad. 54: Lateral sepal: color of macule (if present)  
Ad. 63: Petal: diffused over color (if present)  
Ad. 64: Petal: color of spots (if present)  
Ad. 65: Petal: color of brindle (if present)  
Ad. 66: Petal: color of bands (if present)  
Ad. 67: Petal: color of stripes (if present)  
Ad. 68: Petal: color of margin (if present)  
Ad. 69: Petal: color of macule (if present)



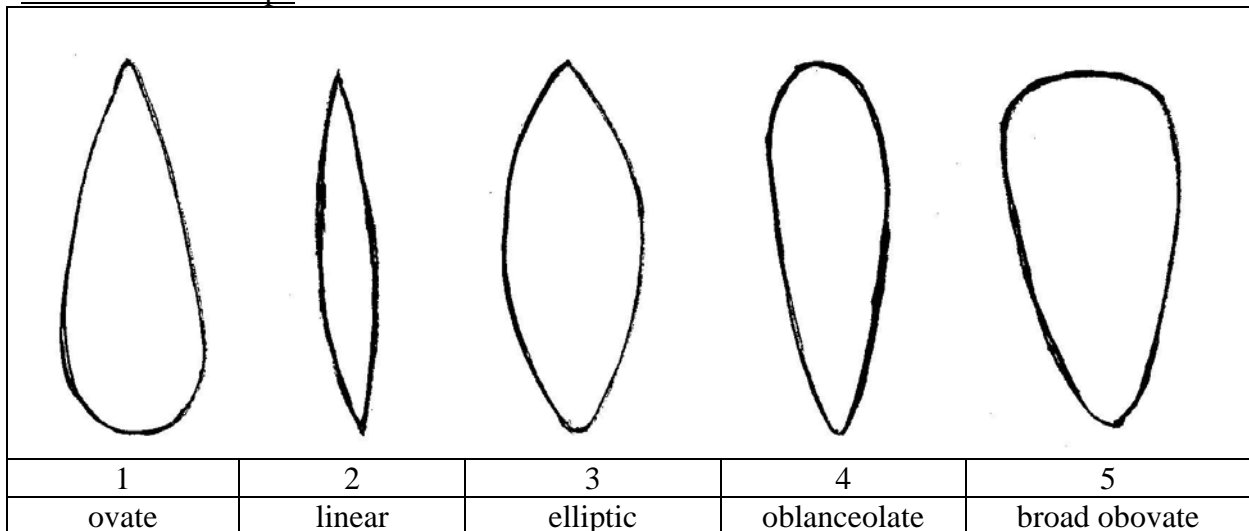
- Ad. 33: Dorsal sepal: diffused over color (if present)  
Ad. 48: Lateral sepal: diffused over color (if present)  
Ad. 63: Petal: diffused over color (if present)  
Ad. 79: Apical lobe: diffused over color (if present)  
Ad. 85: Lateral lobe: diffused over color (if present)

Diffused over color should be observed at base of the each organs.

Ad. 42: Lateral sepal: shape

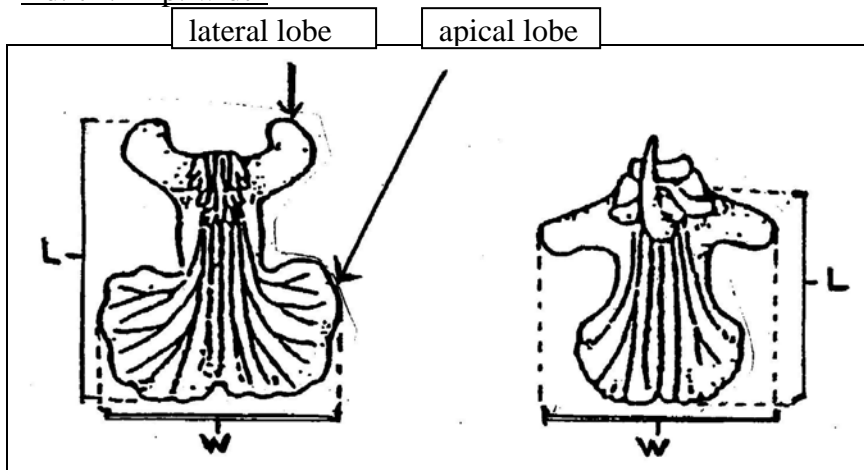


Ad. 57: Petal : shape

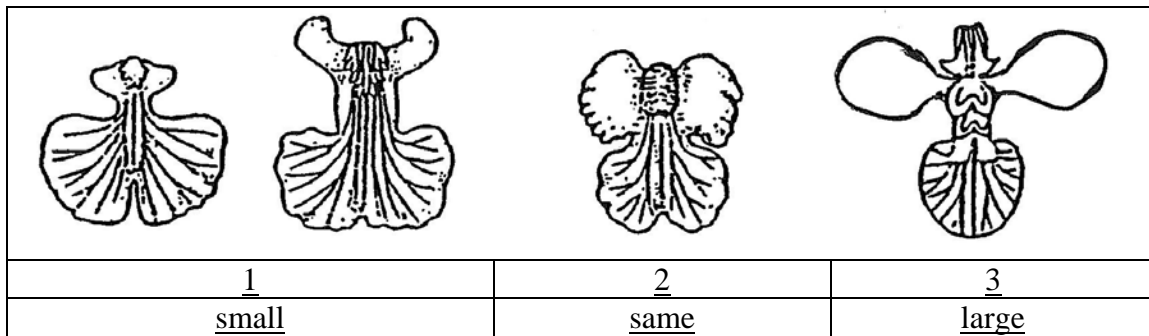


Ad. 70: Lip: length

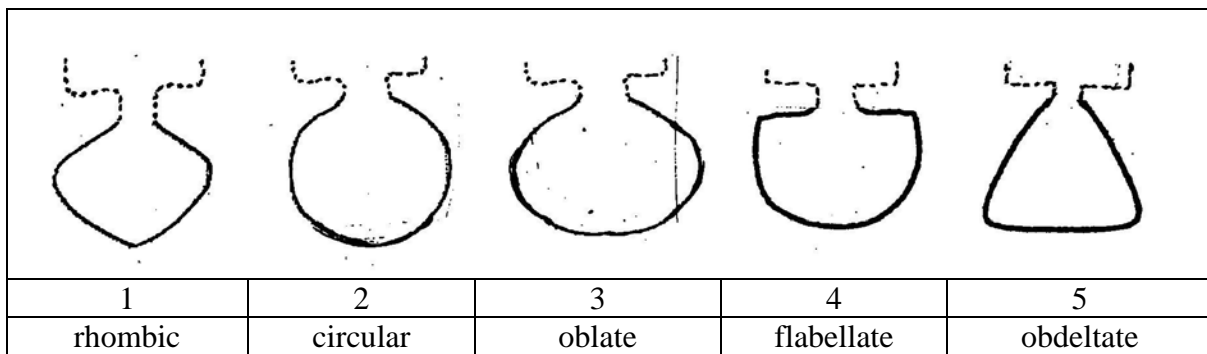
Ad. 71: Lip: width



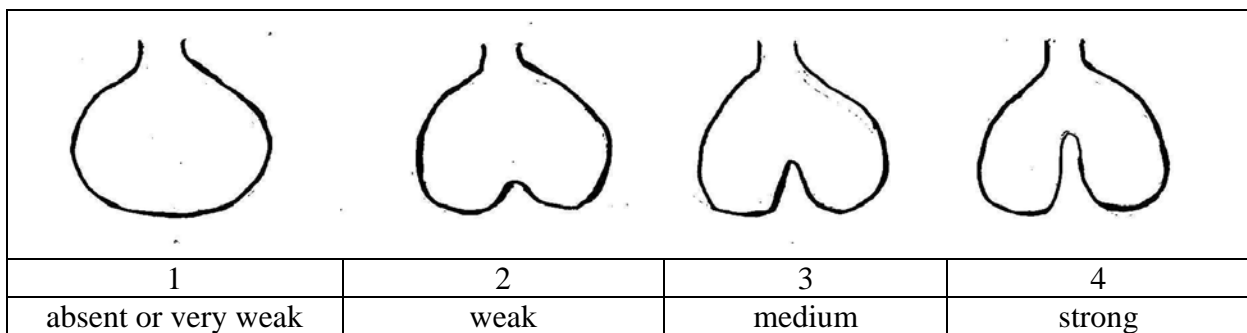
Ad. 72: Lip: size of lateral lobes in relation to apical lobe



Ad. 74: Apical lobe : shape



Ad. 75: Apical lobe: indentation of apex



Ad. 79: Apical lobe: diffused over color (if present)

Ad. 80: Apical lobe: color of spots (if present)

Ad. 81: Apical lobe: color of brindle (if present)

Ad. 82: Apical lobe: color of bands (if present)

Ad. 83: Apical lobe: color of edge (if present)

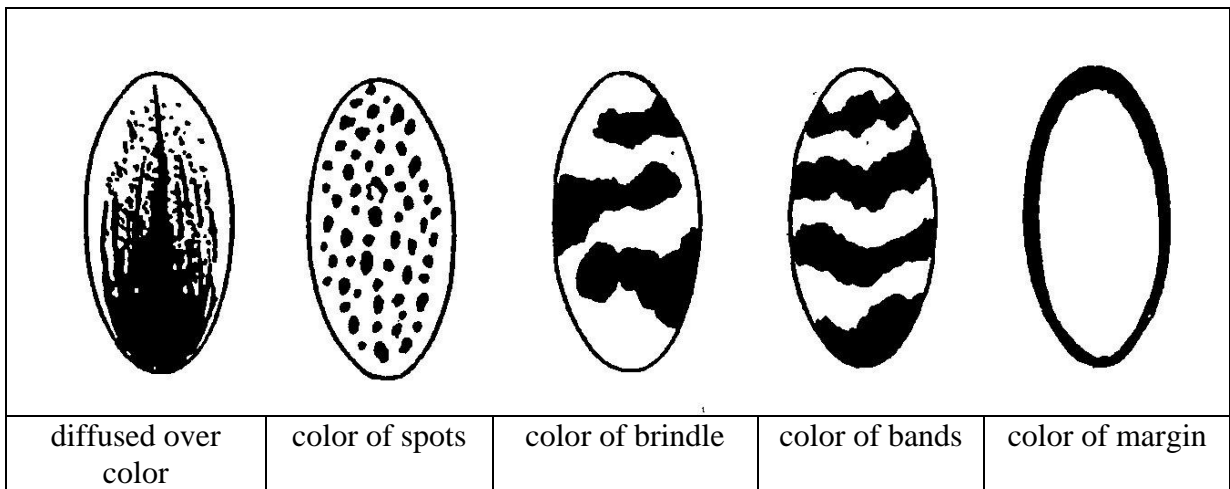
Ad. 85: Lateral lobe: diffused over color (if present)

Ad. 86: Lateral lobe: color of spots (if present)

Ad. 87: Lateral lobe: color of brindle (if present)

Ad. 88: Lateral lobe: color of bands (if present)

Ad. 89: Lateral lobe: color of edge (if present)



8.3 Explanation of the origin of example varieties

No.	Denomination	GREX	Seed parent	Pollen parent
1	Dancing Sunlight 'Suzy'	Dancing Sunlight	<i>Cochlioda</i>	<i>Oncidium</i>
2	Dancing Sunlight Ami	Dancing Sunlight	<i>Cochlioda</i>	<i>Oncidium</i>
3	Dancing Sunlight Nancy	Dancing Sunlight	<i>Cochlioda</i>	<i>Oncidium</i>
4	Ella 'Flambeau'	Ella	<i>Gomesa</i>	<i>Oncidium</i>
5	Fight Yuko'		<i>Oncidium</i>	<i>Oncidium</i>
6	Haru Ichiban'		Mutant of <i>Oncidium</i>	
7	Haruka'		<i>Ionopsis</i>	<i>Oncidium</i>
8	Kaori no Izumi'		<i>Oncidium</i>	<i>Oncidium</i>
9	Kinsei 'Abe No.4'	Kinsei	<i>Oncidium</i>	<i>Oncidium</i>
10	Kukoo 'YMC-2'	Kukoo	<i>Zelenkoa</i>	<i>Oncidium</i>
11	Kurusu'		<i>Cochlioda</i>	<i>Oncidium</i>
12	Makalii 'Gotoh'	Makalii	<i>Oncidium</i>	<i>Oncidium</i>
13	Mayfair 'Yellow Angel'	Mayfair	<i>Oncidium</i>	<i>Cyrtocidium</i>
14	Misaki Wave 'Yurara'	Misaki Wave	<i>Cyrtocidium</i>	<i>Oncidium</i>
15	Monshirotyo no Café'		<i>Oncidium</i>	<i>Oncidium</i>
16	Morning Medley 'Sakurako'	Morning Medley	<i>Cochlioda</i>	<i>Oncidium</i>
17	Only One'		<i>Oncidium</i>	<i>Oncidium</i>
18	Only You'		<i>Oncidium</i>	<i>Oncidium</i>
19	Pink Sugar'		<i>Ionopsis</i>	<i>Oncidium</i>
20	Poco-A-Poco Yellow'		<i>Oncidium</i>	<i>Ionopsis</i>
21	Sakura no Sato'		<i>Ionopsis</i>	<i>Oncidium</i>
22	Sang-Chan 'Nihao'	Sang Chan	<i>Cyrtocidium</i>	<i>Cyrtochilum</i>
23	Shell white'		<i>Cyrtocidium</i>	<i>Oncidium</i>
24	Shimizu Parasol Papurikon'		<i>Oncidium</i>	<i>Oncidium</i>
25	Sunlight Siesta 'Ota'	Sunlight Siesta	<i>Cochlioda</i>	<i>Oncidium</i>
26	Sunlight Siesta 'Ruru'	Sunlight Siesta	<i>Cochlioda</i>	<i>Oncidium</i>
27	Twinkle 'Fragrance Fantasy'	Twinkle	<i>Oncidium</i>	<i>Oncidium</i>
28	Yasukasupa Akane'		<i>Oncidium</i>	<i>Oncidium</i>
29	Yasukasupa Koharu'		<i>Oncidium</i>	<i>Oncidium</i>
30	Yasukasupa Komachi'		<i>Oncidium</i>	<i>Oncidium</i>
31	Yellow Days'		Mutant of <i>Oncidium</i>	

9. Literature

Karasawa, K., 1989: Orchid Atlas Volume 7. Orchid Atlas Publishing Society. Tokyo, JP, pp. 40 to 110

Karasawa, K., 2003: Species Orchidacearum- 1 Text. Japan Broadcasting Publishing Co. Ltd. Tokyo, JP, pp.296 to 308

Karasawa, K., 2003: Species Orchidacearum- 2 Plates. Japan Broadcasting Publishing Co. Ltd. Tokyo, JP, pp. 295 to 307

Yoneda, K., 2003: The Grand Dictionary of Flower Horticulture Volume 15 Orchid. The Rural Culture Association. Tokyo, JP, pp.371 to 391

Oda, Z., 1984: Orchid-Varieties,Breeding,Cultivation and Propagation. The Hokuryu Ltd. Tokyo, JP, pp. 315 to 319

Karasawa, K., 1996: Color Dictionary of Orchid. The Yamatokeikoku Ltd. Tokyo, JP, pp. 407 to 432

Higuchi, H., 1983: Japanese Test Guideline for Oncidium. Ministry of Agriculture, Forestry and Fisheries. Japan, Tokyo, JP.

10. Technical Questionnaire

TECHNICAL QUESTIONNAIRE	Page {x} of {y}	Reference Number:
		Application date: (not to be filled in by the applicant)
<p>TECHNICAL QUESTIONNAIRE          to be completed in connection with an application for plant breeders' rights</p>		
<p>1. Subject of the Technical Questionnaire(please indicate the relevant genus or hybrid)</p> <p>1.1.1 Botanical name <input data-bbox="625 730 1329 786" type="text" value="Oncidium SW."/></p> <p>1.1.2 Common name <input data-bbox="625 804 1329 860" type="text" value="Oncidium"/> [ ]</p> <p>1.2.1 Botanical name <input data-bbox="625 893 1329 949" type="text" value="hybrid between &lt;i&gt;Oncidium Sw.&lt;/i&gt; and &lt;i&gt;Cochlioda Lindl.&lt;/i&gt;"/></p> <p>1.2.2 Common name <input data-bbox="625 967 1329 1023" type="text" value="Onciododa"/> [ ]</p>		
<p>2. Applicant</p> <p>Name <input data-bbox="625 1167 1350 1223" type="text"/></p> <p>Address <input data-bbox="625 1240 1350 1435" type="text"/></p> <p>Telephone No. <input data-bbox="625 1458 1350 1514" type="text"/></p> <p>Fax No. <input data-bbox="625 1532 1350 1588" type="text"/></p> <p>E-mail address <input data-bbox="625 1606 1350 1662" type="text"/></p> <p>Breeder (if different from applicant) <input data-bbox="625 1727 1350 1783" type="text"/></p>		



TECHNICAL QUESTIONNAIRE	Page {x} of {y}	Reference Number:
-------------------------	-----------------	-------------------

3. Proposed denomination and breeder's reference

Proposed denomination  
(if available)

Breeder's reference

#4. Information on the breeding scheme and propagation of the variety

4.1 Breeding scheme

4.1.1 Crossing

(a) controlled cross [ ]  
 (please state parent varieties)

(.....)	x	(.....)
female parent		male parent

(b) partially known cross [ ]  
 (please state known parent variety(ies))

(.....)	x	(.....)
female parent		male parent

(c) unknown cross [ ]

4.1.2 Mutation [ ]  
 (please state parent variety)

4.1.3 Discovery and development [ ]  
 (please state where and when discovered and how developed)

4.1.4 Other [ ]  
 (please provide details)

# Authorities may allow certain of this information to be provided in a confidential section of the Technical Questionnaire.

TECHNICAL QUESTIONNAIRE	Page {x} of {y}	Reference Number:
-------------------------	-----------------	-------------------

4.2 Method of propagating the variety

4.2.1 Vegetative propagation

- (a) cuttings
- (b) *in vitro* propagation
- (c) other (state method)

.....

4.2.2 Seed

4.2.3 Other

(please provide details)

.....

TECHNICAL QUESTIONNAIRE	Page {x} of {y}	Reference Number:
-------------------------	-----------------	-------------------

5. Characteristics of the variety to be indicated (the number in brackets refers to the corresponding characteristic in Test Guidelines; please mark the note which best corresponds).

Characteristics	Example Varieties	Note
<b>5.1 Plant: size</b>		
<b>(1)</b>		
very small		1[ ]
very small to small		2[ ]
small	Twinkle 'Fragrance Fantasy'	3[ ]
small to medium		4[ ]
medium	Kinsei 'Abe No.4'	5[ ]
medium to large		6[ ]
large	'Kurusu'	7[ ]
large to very large		8[ ]
very large		9[ ]
<b>5.2 Flower: width in front view</b>		
<b>(24)</b>		
very narrow		1[ ]
very narrow to narrow		2[ ]
narrow	'Kurusu'	3[ ]
narrow to medium		4[ ]
medium	<del>Golden Sunset</del> 'Taka'	5[ ]
medium to broad		6[ ]
broad	Ella 'Flambeau'	7[ ]
broad to very broad		8[ ]
very broad		9[ ]

TECHNICAL QUESTIONNAIRE	Page {x} of {y}	Reference Number:
-------------------------	-----------------	-------------------

Characteristics	Example Varieties	Note
<b>5.3 Petal: ground color (62)</b>		
white		1[ ]
yellow		2[ ]
orange		3[ ]
pink		4[ ]
red		5[ ]
violet		6[ ]
brown		7[ ]
<b>5.4 Petal: diffused over color (if present) (63)</b>		
white		1[ ]
yellow		2[ ]
orange		3[ ]
pink		4[ ]
red		5[ ]
violet		6[ ]
brown		7[ ]
<b>5.5 Petal: color of spots (64)</b>		
white		1[ ]
yellow		2[ ]
orange		3[ ]
pink		4[ ]
red		5[ ]
violet		6[ ]
brown		7[ ]

TECHNICAL QUESTIONNAIRE	Page {x} of {y}	Reference Number:
-------------------------	-----------------	-------------------

Characteristics	Example Varieties	Note
<b>5.6 Petal: color of brindle (65)</b>		
white		1[ ]
yellow		2[ ]
orange		3[ ]
pink		4[ ]
red		5[ ]
violet		6[ ]
brown		7[ ]
<b>5.7 Petal: color of bands (66)</b>		
white		1[ ]
yellow		2[ ]
orange		3[ ]
pink		4[ ]
red		5[ ]
violet		6[ ]
brown		7[ ]
<b>5.8 Petal: color of stripes (67)</b>		
white		1[ ]
yellow		2[ ]
orange		3[ ]
pink		4[ ]
red		5[ ]
violet		6[ ]
brown		7[ ]

TECHNICAL QUESTIONNAIRE	Page {x} of {y}	Reference Number:
-------------------------	-----------------	-------------------

Characteristics	Example Varieties	Note
<b>5.9 Petal: color of margin (68)</b>		
white		1[ ]
yellow		2[ ]
orange		3[ ]
pink		4[ ]
red		5[ ]
violet		6[ ]
brown		7[ ]
<b>5.10 Petal: color of macule (69)</b>		
white		1[ ]
yellow		2[ ]
orange		3[ ]
pink		4[ ]
red		5[ ]
violet		6[ ]
brown		7[ ]
<b>5.11 Apical lobe: ground color (78)</b>		
white		1[ ]
yellow		2[ ]
orange		3[ ]
pink		4[ ]
red		5[ ]
violet		6[ ]
brown		7[ ]

TECHNICAL QUESTIONNAIRE	Page {x} of {y}	Reference Number:
-------------------------	-----------------	-------------------

6. Similar varieties and differences from these varieties

*Please use the following table and box for comments to provide information on how your candidate variety differs from the variety (or varieties) which, to the best of your knowledge, is (or are) most similar. This information may help the examination authority to conduct its examination of distinctness in a more efficient way.*

Denomination(s) of variety(ies) similar to your candidate variety	Characteristic(s) in which your candidate variety differs from the similar variety(ies)	Describe the expression of the characteristic(s) for the <b>similar</b> variety(ies)	Describe the expression of the characteristic(s) for <b>your</b> candidate variety
<i>Example</i>	<i>Petal: ground color</i>	<i>yellow</i>	<i>white</i>

Comments:



TECHNICAL QUESTIONNAIRE	Page {x} of {y}	Reference Number:
-------------------------	-----------------	-------------------

#7. Additional information which may help in the examination of the variety

7.1 In addition to the information provided in sections 5 and 6, are there any additional characteristics which may help to distinguish the variety?

Yes [ ] No [ ]

(If yes, please provide details)

7.2 Are there any special conditions for growing the variety or conducting the examination?

Yes [ ] No [ ]

(If yes, please provide details)

7.3 Other information

A representative color image of the variety should accompany the Technical Questionnaire.

8. Authorization for release

(a) Does the variety require prior authorization for release under legislation concerning the protection of the environment, human and animal health?

Yes [ ] No [ ]

(b) Has such authorization been obtained?

Yes [ ] No [ ]

If the answer to (b) is yes, please attach a copy of the authorization.

---

# Authorities may allow certain of this information to be provided in a confidential section of the Technical Questionnaire.

TECHNICAL QUESTIONNAIRE	Page {x} of {y}	Reference Number:
-------------------------	-----------------	-------------------

9. Information on plant material to be examined or submitted for examination.

9.1 The expression of a characteristic or several characteristics of a variety may be affected by factors, such as pests and disease, chemical treatment (e.g. growth retardants or pesticides), effects of tissue culture, different rootstocks, scions taken from different growth phases of a tree, etc.

9.2 The plant material should not have undergone any treatment which would affect the expression of the characteristics of the variety, unless the competent authorities allow or request such treatment. If the plant material has undergone such treatment, full details of the treatment must be given. In this respect, please indicate below, to the best of your knowledge, if the plant material to be examined has been subjected to:

- |   |         |        |
|---|---------|--------|
| (a) Microorganisms (e.g. virus, bacteria, phytoplasma)    | Yes [ ] | No [ ] |
| (b) Chemical treatment (e.g. growth retardant, pesticide) | Yes [ ] | No [ ] |
| (c) Tissue culture  | Yes [ ] | No [ ] |
| (d) Other factors   | Yes [ ] | No [ ] |

Please provide details for where you have indicated "yes".

.....

9.3 Has the plant material to be examined been tested for the presence of virus or other pathogens?

Yes [ ]  
(please provide details as specified by the Authority)

No [ ]

10. I hereby declare that, to the best of my knowledge, the information provided in this form is correct:

Applicant's name

Signature

Date

[End of document]