



TWO/41/8

ORIGINAL: English

DATE: May 1, 2008

INTERNATIONAL UNION FOR THE PROTECTION OF NEW VARIETIES OF PLANTS
GENEVA

**TECHNICAL WORKING PARTY FOR ORNAMENTAL PLANTS
AND FOREST TREES**

**Forty-First Session
Wageningen, Netherlands, June 9 to 13, 2008**

PROPOSALS FOR PARTIAL REVISIONS / CORRECTIONS OF TEST GUIDELINES

Document prepared by an expert from the European Community

1. The following partial revisions or corrections to Test Guidelines are proposed:

Test Guidelines for Verbena (TG TG/220/1: adopted 2004)

Characteristic 2

2. It is proposed to amend characteristic 2 as follows:

Current wording

2. (*)	Plant: width just after the start of flowering	
QN	small	3
	medium	5
	large	7

Proposed new wording

Plant: width	
small	3
medium	5
large	7

3. Characteristic 2 is an asterisked characteristic. For this crop the plant material is submitted in Europe in Spring. The samples from the different applicants are not always at the same stage: some samples start flowering rather soon after submission, others later. Therefore, it is not possible to observe the characteristic “just after the start of flowering”. The differences between the varieties can clearly be observed during the whole flowering season and should, therefore, not be limited to just after the start of flowering.

Characteristic 15

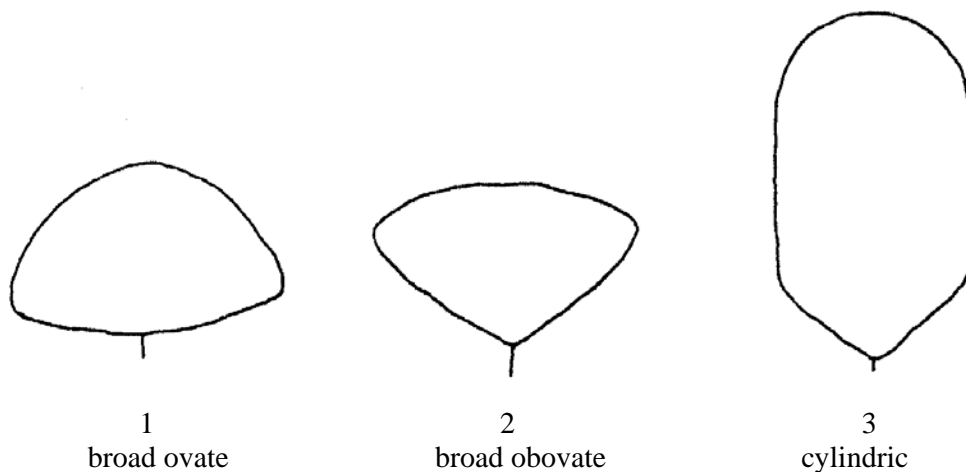
Current wording

15. (*) (+)	Inflorescence: shape in profile	
PQ	broad ovate	1
	broad obovate	2
	cylindric	3

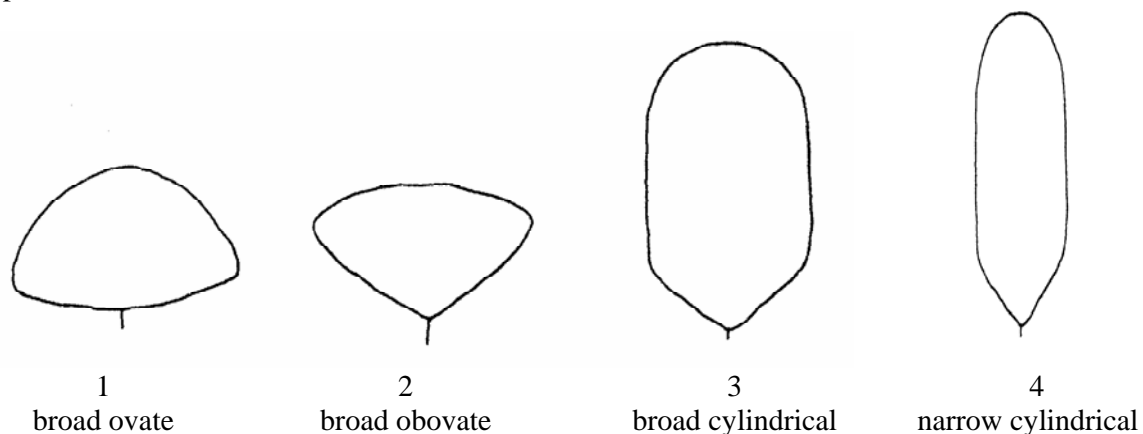
Proposed new wording

Inflorescence: shape in profile	
broad ovate	1
broad obovate	2
broad cylindric	3
narrow cylindric	4

Current Ad. 15: Inflorescence: shape in profile



Proposed new Ad. 15



Test Guidelines for Anthurium (TG/86/5: adopted 1995)

Characteristic 21

Current wording

21.	Varieties with addressed leaves only: Spathe: height of the addressed part of the lobes	
	low	3
	medium	5
	high	7

Proposed new wording

Varieties with addressed lobes only: Spathe: height of the addressed part of the lobes	
low	3
medium	5
high	7

4. It is clear that there is a mistake in the current wording of the characteristic.

Test Guidelines for Dendrobium (TG/209/1 Corr.: adopted 2003, corrected 2006)

Characteristic 79

Current wording

79.	(c)	Lip: number of colors	
(*)	(e)		
QL	one		1
	two		2
	three		3
	four		4
	five		5
	more than five		6

Proposed new wording

Lip: number of colors (except eye and throat)	
one	1
two	2
three	3
four	4
five	5
more than five	6

5. The proposal is intended to improve the characteristic.

Characteristic 83

Current wording

83.	(c)	Lip: color of middle part	
(+)	(e)		
PQ		RHS Colour Chart (indicate reference number)	

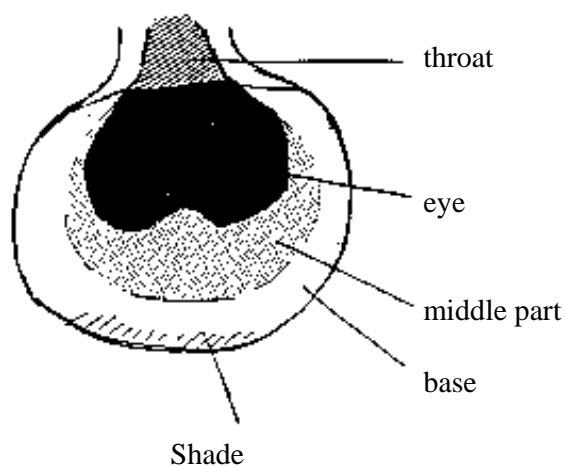
Proposed new wording

(Note: characteristic 82 is "Lip: main color")

Lip: color of middle part (when different from 82)	
RHS Colour Chart (indicate reference number)	

Ad. 77: Lip: eye

Ad. 83: Lip: color of middle part



(Note: characteristic 82 is “Lip: main color”)

6. The proposal is intended to improve the characteristic.

Test Guidelines for Chrysanthemum (TG/26/5: adopted 2006)

Characteristic 9

Current wording

	English	français	deutsch	español	Example Varieties/ Exemples/ Beispielssorten/ Variedades ejemplo	Note/ Nota
9. (*)	Leaf: length including petiole	Feuille: longueur, pétiole compris	Blatt: Länge einschließlich Blattstiel	Hoja: longitud incluido el peciolo		
QN	(a) short	courte	kurz	corta	Molfetta Pink	3
	(c) medium	moyenne	mittel	media	Figrand	5
	long	longue	lang	media	Yellow Wonder	7

7. It is proposed to correct the Spanish translation of “long” to “larga”.

[End of document]