



TWF/47/6 Add.
ORIGINAL: English
DATE: November 9, 2016

INTERNATIONAL UNION FOR THE PROTECTION OF NEW VARIETIES OF PLANTS
Geneva

TECHNICAL WORKING PARTY FOR FRUIT CROPS

Forty-Seventh Session
Angers, France, November 14 to 18, 2016

ADDENDUM TO

VARIETY DESCRIPTION DATABASES

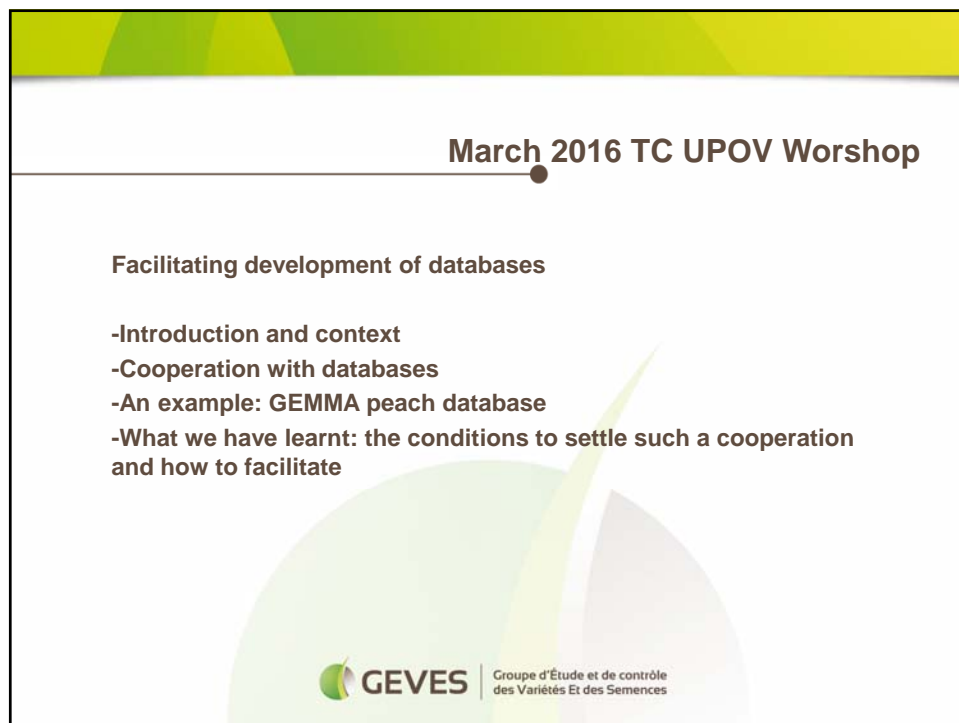
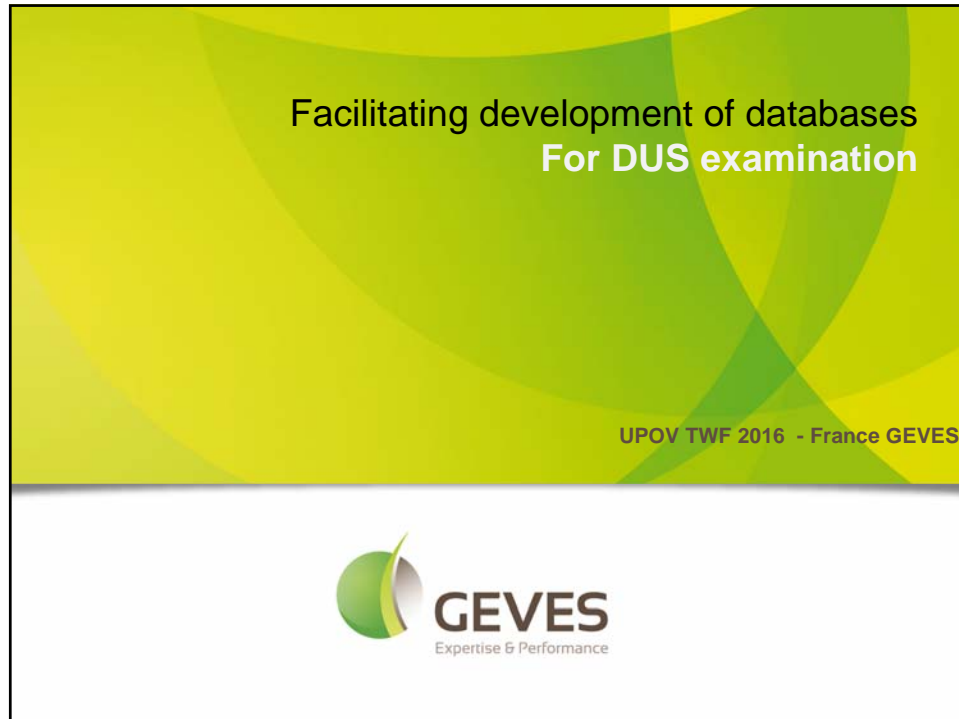
Document prepared by an expert from France

Disclaimer: this document does not represent UPOV policies or guidance

The Annex to this document contains a copy of the presentation "Facilitating development of databases for DUS examination" to be made by an expert from France at the forty-seventh session of the Technical Working Party for Fruit Crops (TWF).

[Annex follows]

FACILITATING DEVELOPMENT OF DATABASES FOR DUS EXAMINATION
BY AN EXPERT FROM FRANCE




Facilitating development of databases

Introduction and context

- DUS is based on worldwide reference collections
→ Distinctness = **the key point** of the DUS
- Limits: no one can pretend to have a complete worldwide reference collections
- → how to optimize ?

Centralize the DUS examination


cheaper, easier ?
Monopole, concentration of expertise, lack of information?



Work with an organized network of DUS examination offices

Requires organization and agreements to cooperate

In any case, need to strengthen the expertise of the examiner

 **GEVES** | Groupe d'Étude et de contrôle des Variétés Et des Semences

Facilitating development of databases

Cooperation with databases - **a solution ? and how ?**

Work with an organized network of DUS examination offices

Requires organization and agreements to cooperate

→ A solution : merge the DUS expertises in a **commun system**, at disposal of each EO

=


International DUS Databases managed by EOs, collaborating to share data and to check the Distinctness together

→ - A community of EO's sharing the same approach of the Distinction criteria in terms of tools → **common rules : an agreement and a commitment of the EOs**

- A data base with several data:

PHENOTYPE + PICTURES + MOLECULAR DATA[+ DNA]

into a common database, shared on the internet

 **GEVES** | Groupe d'Étude et de contrôle des Variétés Et des Semences

Facilitating development of databases

Cooperation with databases - Common procedure, common rules


→ **Technical rules :**

- 1. same way to note and to introduce data + all DUS characteristics or only the most reliable= **a calibration book and ring tests if needed**
- 2. common tool for DUS data

PHENOTYPE + PICTURES + MOLECULAR DATA[+ DNA]
into a common database, shared on the internet

→ **A procedure to check the Distinctness:**

- an agreement on how to check the Distinctness:
 - . inside its own DUS collection
 - . then, inside the common DUS database to:
 - i) define the set of closest varieties,
 - ii) check D at the end of each DUS cycle.

 **GEVES** | Groupe d'Étude et de contrôle des Variétés Et des Semences


Facilitating development of databases

An example among others : GEMMA peach database

Partners involved: Hungary, Spain, Italy, France, with CPVO

- **A common tool : a web-based database**
 - To integrate different type of data (Molecular data + Digital pictures) whatever the couple Species/Country
 - To support multi language
 - To define access rights

GEMMA <http://gem.geves.info/gem/>

 **GEVES** | Groupe d'Étude et de contrôle des Variétés Et des Semences

Facilitating development of databases

An example among others : GEMMA peach database

Facilitating development of databases

An example among others : GEMMA peach database

●

Partners involved: Hungary, Spain, Italy, France, with the CPVO
 – Work and collaboration still in progress ! Not easy and not quick to build !

- **A common tool : a web based database**
- **A ring test** A common set of DUS characteristics
 A common calibration book
- A common choice of the data to include in the database : some DUS data, some administrative data, pictures
- **A common agreement** – how to feed the database
- **A common agreement** – how to use the database – **IN PROGRESS**

GEVES | Groupe d'Étude et de contrôle des Variétés Et des Semences


Facilitating development of databases
What we have learnt: The conditions to settle such a cooperation and how to facilitate

Many questions to be tackled in advance

Commitment of the EOs
Calibration book and ring test
Share a PHENOTYPE + PICTURES + [MOLECULAR DATA + DNA]
In a common tool
Common agreement to feed the database
Common agreement to use the database – common decision rules

 **GEVES** | Groupe d'Étude et de contrôle
des Variétés Et des Semences

Thank you for your attention

 **GEVES** | Groupe d'Étude et de contrôle
des Variétés Et des Semences