

Technical Working Party for Agricultural Crops**TWA/55/4****Fifty-Fifth Session****Seoul, Republic of Korea, June 15 to 18, 2026****Original:** English**Date:** May 19, 2026

ONGOING EUROPEAN WORK ON BARLEY PROTOCOL*Document prepared by an expert from France**Disclaimer: this document does not represent UPOV policies or guidance*

The annex to this document contains a presentation “Ongoing European work on barley protocol”, to be made by an expert from France, at the fifty-fifth session of the TWA.

[Annex follows]





Ongoing European work on barley protocol

TWA 55, 15-18 June 2026

Follow up of [TWA/53/5 ADD. REV.](#)

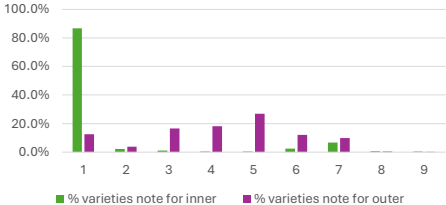


1

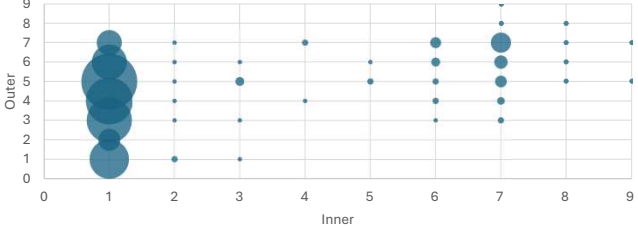
Context


Difficulties reported in distinguishing spring barley varieties

- Breeding programs rely on a narrow Western European germplasm pool.
- Predominance of a single phenotypic type: 2-rows, anthocyanin coloration, glaucosity, no sterile spikelets and very similar earliness and plant length.
- Varieties are therefore very close, and current Test guidelines (TG) may not capture enough variability.
- Some national GEVES characteristics show better discrimination than those included in the TG.
- Example of spiculation of inner lateral nerves of dorsal side of lemma vs spiculation of outer lateral nerves of dorsal side of lemma :



Category	% varieties note for inner	% varieties note for outer
1	85.0%	10.0%
2	5.0%	5.0%
3	5.0%	15.0%
4	5.0%	15.0%
5	5.0%	25.0%
6	5.0%	10.0%
7	5.0%	10.0%
8	5.0%	5.0%
9	5.0%	5.0%





2

Ring Test 2025/2026 followed after discussions at CPVO Agricultural Experts Meeting in 2024



📍 12 Examination Offices (EOs) : AT, CZ, DE, DK, EE, ES, FI, FR, HR, HU, PL, SK.

🌿 13 varieties

📅 2 years of Ring test (2025&26) + 1 Workshop 2026

📋 Aims:

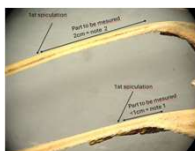
- ✓ To evaluate new characteristics for the examination of Spring Barley varieties
- ✓ To conduct a harmonization exercise for DUS testing by observing all TG characteristics.

Observation of all UE protocol characteristics (CPVO/TP-019/5) + 3 proposals for new characteristics :

Leaf: width
3 notes scale



Awn: length of smooth part of the median nerve
5 notes scale



Grain: spiculation of outer lateral nerves on the dorsal side of the lemma
9 notes scale



3

Workshop organised by GEVES and CPVO

📅 Tuesday, 24 March 2026: Workshop held at le Magneraud GEVES station

📍 13 EO, CPVO & Euroseeds ~ 30 participants

📋 Presentation of the 2025 ring test results

🌿 Visit of DUS trials, discussions on leaf characteristics

🔬 Laboratory exercises, harmonisation among examiners on different characteristics



- Extensive sharing of individual practices among participants
- Targeted discussions among examiners working on the same species, providing valuable input for protocol revision
- Clarification of several misunderstandings regarding the method of observation of certain characteristics
- Overall, the meeting was considered very fruitful and useful by all participants



4

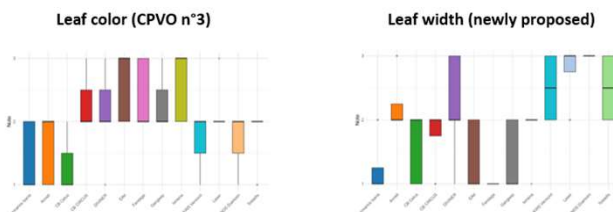
1st conclusions

Current protocol - general observations

- Issues to observe some characteristics
- Need for additional explanation and guidance for certain characteristics (e.g. QL char. Grain type Husked / non-husked, Lemma: Shape of base)
- Consideration to restrict application of some char. to spring or winter types only
- Reconsidering keeping or deleting some states of expression
- Need an update of the set of example varieties

Regarding the 3 proposed characteristics

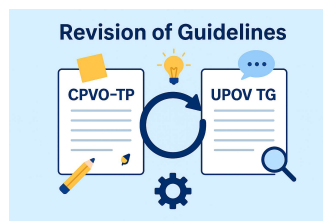
- Good discrimination power (better than some current ones)
- No more variability between EOs than current ones
- Expected improvement in consistency following harmonisation exercises conducted during the workshop



5

Considerations for future work

- Open consideration of a full revision of the CPVO-TP & Reflection on potential revision of the UPOV TG
 - Relevance and clarity of characteristics
 - Applicability across types



Aims:



- Improved clarity and consistency
- Support harmonised DUS examination at international level



6



**Thank you for your
attention**

