

UPOV

TG/SESAME(proj.8)

ORIGINAL: English

DATE: 2012-04-16

INTERNATIONAL UNION FOR THE PROTECTION OF NEW VARIETIES OF PLANTS

Geneva

DRAFT

SESAME

UPOV Code: SESAM_IND

Sesamum indicum L.

GUIDELINES

FOR THE CONDUCT OF TESTS

FOR DISTINCTNESS, UNIFORMITY AND STABILITY

*prepared by experts from Israel and Republic of Korea**to be considered by the**Technical Working Party for Agricultural Crops
at its forty-first session, to be held in Angers, France, from May 21 to 25, 2012*Alternative Names:^{*}

<i>Botanical name</i>	<i>English</i>	<i>French</i>	<i>German</i>	<i>Spanish</i>
<i>Sesamum indicum</i> L.	Sesame	Sésame	Sesam	Sésamo

The purpose of these guidelines ("Test Guidelines") is to elaborate the principles contained in the General Introduction (document TG/1/3), and its associated TGP documents, into detailed practical guidance for the harmonized examination of distinctness, uniformity and stability (DUS) and, in particular, to identify appropriate characteristics for the examination of DUS and production of harmonized variety descriptions.

ASSOCIATED DOCUMENTS

These Test Guidelines should be read in conjunction with the General Introduction and its associated TGP documents.

^{*} These names were correct at the time of the introduction of these Test Guidelines but may be revised or updated. [Readers are advised to consult the UPOV Code, which can be found on the UPOV Website (www.upov.int), for the latest information.]

<u>TABLE OF CONTENTS</u>	<u>PAGE</u>
1. SUBJECT OF THESE TEST GUIDELINES	3
2. MATERIAL REQUIRED	3
3. METHOD OF EXAMINATION	3
3.1 NUMBER OF GROWING CYCLES	3
3.2 TESTING PLACE	3
3.3 CONDITIONS FOR CONDUCTING THE EXAMINATION	3
3.4 TEST DESIGN	3
3.5 ADDITIONAL TESTS.....	3
4. ASSESSMENT OF DISTINCTNESS, UNIFORMITY AND STABILITY	4
4.1 DISTINCTNESS	4
4.2 UNIFORMITY	5
4.3 STABILITY.....	5
5. GROUPING OF VARIETIES AND ORGANIZATION OF THE GROWING TRIAL.....	5
6. INTRODUCTION TO THE TABLE OF CHARACTERISTICS.....	5
6.1 CATEGORIES OF CHARACTERISTICS	5
6.2 STATES OF EXPRESSION AND CORRESPONDING NOTES.....	6
6.3 TYPES OF EXPRESSION	6
6.4 EXAMPLE VARIETIES	6
6.5 LEGEND	6
7. TABLE OF CHARACTERISTICS/TABLEAU DES CARACTÈRES/MERKMALSTABELLE/TABLA DE CARACTERES	7
8. EXPLANATIONS ON THE TABLE OF CHARACTERISTICS.....	12
8.1 EXPLANATIONS COVERING SEVERAL CHARACTERISTICS.....	12
8.2 EXPLANATIONS FOR INDIVIDUAL CHARACTERISTICS	12
9. LITERATURE	18
10. TECHNICAL QUESTIONNAIRE.....	19

1. Subject of these Test Guidelines

These Test Guidelines apply to all varieties of *Sesamum indicum* L..

2. Material Required

2.1 The competent authorities decide on the quantity and quality of the plant material required for testing the variety and when and where it is to be delivered. Applicants submitting material from a State other than that in which the testing takes place must ensure that all customs formalities and phytosanitary requirements are complied with.

2.2 The material is to be supplied in the form of seed.

2.3 The minimum quantity of plant material, to be supplied by the applicant, should be:

30 g of seed.

The seed should meet the minimum requirements for germination, species and analytical purity, health and moisture content, specified by the competent authority. In cases where the seed is to be stored, the germination capacity should be as high as possible and should, be stated by the applicant.

2.4 The plant material supplied should be visibly healthy, not lacking in vigor, nor affected by any important pest or disease.

2.5 The plant material should not have undergone any treatment which would affect the expression of the characteristics of the variety, unless the competent authorities allow or request such treatment. If it has been treated, full details of the treatment must be given.

3. Method of Examination

3.1 *Number of Growing Cycles*

The minimum duration of tests should normally be two independent growing cycles.

3.2 *Testing Place*

Tests are normally conducted at one place. In the case of tests conducted at more than one place, guidance is provided in TGP/9 "Examining Distinctness".

3.3 *Conditions for Conducting the Examination*

The tests should be carried out under conditions ensuring satisfactory growth for the expression of the relevant characteristics of the variety and for the conduct of the examination.

3.4 *Test Design*

Each test should be designed to result in a total of at least 50 plants, which should be divided between at least 2 replicates.

3.5 *Additional Tests*

Additional tests, for examining relevant characteristics, may be established.

4. Assessment of Distinctness, Uniformity and Stability

4.1 *Distinctness*

4.1.1 General Recommendations

It is of particular importance for users of these Test Guidelines to consult the General Introduction prior to making decisions regarding distinctness. However, the following points are provided for elaboration or emphasis in these Test Guidelines.

4.1.2 Consistent Differences

The differences observed between varieties may be so clear that more than one growing cycle is not necessary. In addition, in some circumstances, the influence of the environment is not such that more than a single growing cycle is required to provide assurance that the differences observed between varieties are sufficiently consistent. One means of ensuring that a difference in a characteristic, observed in a growing trial, is sufficiently consistent is to examine the characteristic in at least two independent growing cycles.

4.1.3 Clear Differences

Determining whether a difference between two varieties is clear depends on many factors, and should consider, in particular, the type of expression of the characteristic being examined, i.e. whether it is expressed in a qualitative, quantitative, or pseudo-qualitative manner. Therefore, it is important that users of these Test Guidelines are familiar with the recommendations contained in the General Introduction prior to making decisions regarding distinctness.

4.1.4 Number of Plants / Parts of Plants to be Examined

Unless otherwise indicated, for the purposes of distinctness, all observations on single plants should be made on 20 plants or parts taken from each of 20 plants and any other observations made on all plants in the test, disregarding any off-type plants.

4.1.5 Method of Observation

The recommended method of observing the characteristic for the purposes of distinctness is indicated by the following key in the second column of the Table of Characteristics (see document TGP/9 "Examining Distinctness", Section 4 "Observation of characteristics"):

- MG: single measurement of a group of plants or parts of plants
- MS: measurement of a number of individual plants or parts of plants
- VG: visual assessment by a single observation of a group of plants or parts of plants
- VS: visual assessment by observation of individual plants or parts of plants

Type of observation: visual (V) or measurement (M)

"Visual" observation (V) is an observation made on the basis of the expert's judgment. For the purposes of this document, "visual" observation refers to the sensory observations of the experts and, therefore, also includes smell, taste and touch. Visual observation includes observations where the expert uses reference points (e.g. diagrams, example varieties, side-by-side comparison) or non-linear charts (e.g. color charts). Measurement (M) is an objective observation against a calibrated, linear scale e.g. using a ruler, weighing scales, colorimeter, dates, counts, etc.

Type of record: for a group of plants (G) or for single, individual plants (S)

For the purposes of distinctness, observations may be recorded as a single record for a group of plants or parts of plants (G), or may be recorded as records for a number of single, individual plants or parts of plants (S). In most cases, "G" provides a single record per variety and it is not possible or necessary to apply statistical methods in a plant-by-plant analysis for the assessment of distinctness."

In cases where more than one method of observing the characteristic is indicated in the Table of Characteristics (e.g. VG/MG), guidance on selecting an appropriate method is provided in document TGP/9, Section 4.2.

4.2 *Uniformity*

4.2.1 It is of particular importance for users of these Test Guidelines to consult the General Introduction prior to making decisions regarding uniformity. However, the following points are provided for elaboration or emphasis in these Test Guidelines:

4.2.2 For the assessment of uniformity, a population standard of 1% and an acceptance probability of at least 95% should be applied. In the case of a sample size of 50 plants, 2 off-types are allowed.

4.3 *Stability*

4.3.1 In practice, it is not usual to perform tests of stability that produce results as certain as those of the testing of distinctness and uniformity. However, experience has demonstrated that, for many types of variety, when a variety has been shown to be uniform, it can also be considered to be stable.

4.3.2 Where appropriate, or in cases of doubt, stability may be further examined by testing a new seed or plant stock to ensure that it exhibits the same characteristics as those shown by the initial material supplied.

5. Grouping of Varieties and Organization of the Growing Trial

5.1 The selection of varieties of common knowledge to be grown in the trial with the candidate varieties and the way in which these varieties are divided into groups to facilitate the assessment of distinctness are aided by the use of grouping characteristics.

5.2 Grouping characteristics are those in which the documented states of expression, even where produced at different locations, can be used, either individually or in combination with other such characteristics: (a) to select varieties of common knowledge that can be excluded from the growing trial used for examination of distinctness; and (b) to organize the growing trial so that similar varieties are grouped together.

5.3 The following have been agreed as useful grouping characteristics:

- (a) Plant: growth type (characteristic 1)
- (b) Flowering stem: number of flowers per leaf axil (characteristic 16)
- (c) Capsule: number of carpels (characteristic 22)
- (d) Seed coat: color (characteristic 27)

5.4 Guidance for the use of grouping characteristics, in the process of examining distinctness, is provided through the General Introduction and document TGP/9 "Examining Distinctness".

6. Introduction to the Table of Characteristics

6.1 *Categories of Characteristics*

6.1.1 Standard Test Guidelines Characteristics

Standard Test Guidelines characteristics are those which are approved by UPOV for examination of DUS and from which members of the Union can select those suitable for their particular circumstances.

6.1.2 Asterisked Characteristics

Asterisked characteristics (denoted by *) are those included in the Test Guidelines which are important for the international harmonization of variety descriptions and should always be examined for DUS and included in the variety description by all members of the Union, except when the state of expression of a preceding characteristic or regional environmental conditions render this inappropriate.

6.2 States of Expression and Corresponding Notes

6.2.1 States of expression are given for each characteristic to define the characteristic and to harmonize descriptions. Each state of expression is allocated a corresponding numerical note for ease of recording of data and for the production and exchange of the description.

6.2.2 In the case of qualitative and pseudo-qualitative characteristics (see Chapter 6.3), all relevant states of expression are presented in the characteristic. However, in the case of quantitative characteristics with 5 or more states, an abbreviated scale may be used to minimize the size of the Table of Characteristics. For example, in the case of a quantitative characteristic with 9 states, the presentation of states of expression in the Test Guidelines may be abbreviated as follows:

State	Note
small	3
medium	5
large	7

However, it should be noted that all of the following 9 states of expression exist to describe varieties and should be used as appropriate:

State	Note
very small	1
very small to small	2
small	3
small to medium	4
medium	5
medium to large	6
large	7
large to very large	8
very large	9

6.2.3 Further explanation of the presentation of states of expression and notes is provided in document TGP/7 "Development of Test Guidelines".

6.3 Types of Expression

An explanation of the types of expression of characteristics (qualitative, quantitative and pseudo-qualitative) is provided in the General Introduction.

6.4 Example Varieties

Where appropriate, example varieties are provided to clarify the states of expression of each characteristic.

6.5 Legend

(*) Asterisked characteristic – see Chapter 6.1.2

QL Qualitative characteristic – see Chapter 6.3

QN Quantitative characteristic – see Chapter 6.3

PQ Pseudo-qualitative characteristic – see Chapter 6.3

MG, MS, VG, VS – see Chapter 4.1.5

(a)-(c) See Explanations on the Table of Characteristics in Chapter 8.1.

(+) See Explanations on the Table of Characteristics in Chapter 8.2.

7. Table of Characteristics/Tableau des caractères/Merkmalstabelle/Tabla de caracteres

	English	français	deutsch	español	Example Varieties Exemples Beispielssorten Variedades ejemplo	Note/ Nota
1.	VG	Plant: growth type				
(*)						
(+)						
QL	(a)	indeterminate			Yangbaek	1
		determinate				2
2.	VG	Plant: number of branches				
(*)						
(+)						
QN	(a)	absent or very few			Jinju	1
		moderate			Pyungan	3
		very many			Ansan	5
3.	VG	Plant: position of branches				
(+)						
PQ	(a)	basal			Kanto 1 go	1
		along stem			Ansan	2
		apical			H 65	3
4.	MS	Stem: number of nodes to first flower				
(*)						
(+)						
QN	(a)	few			Yunhuck	3
		medium			Jinju	5
		many			Whangbaek	7
5.	VG	Stem: pubescence				
QN	(a)	absent or very weak			Jinki	1
		medium			Poongnam	2
		strong			Sunbaek	3
6.	MS	Stem: length				
(*)						
(+)						
QN	(c)	short			Adam	3
		medium				5
		long			Ansan	7

	English	français	deutsch	español	Example Varieties Exemples Beispielssorten Variedades ejemplo	Note/ Nota
7.	MS	Leaf blade: length				
	(+)					
QN	(b)	short			Soonhuck	3
		medium			Danbaek	5
		long			Osan	7
8.	MS	Leaf blade: width				
	(+)					
QN	(b)	narrow			Soonhuck	3
		medium			Danbaek	5
		broad			Osan	7
9.	MS	Leaf blade: length/width ratio				
	(*)					
QN	(b)	weakly elongated			Soonhuck	3
		moderately elongated			Danbaek	5
		strongly elongated			Osan	7
10.	VG	Leaf blade: degree of lobing				
	(+)					
QN	(b)	absent or very weak			Soonhuck	1
		weak			Hucksun	3
		medium			Nambaek	5
		strong			Osan	7
		very strong			Milsung	9
11.	VG	Leaf blade: intensity of green color				
	(+)					
QN	(b)	light			Osan	3
		medium			Yanghuck	5
		dark			Milsung	7
12.	VG	Leaf blade: venations on lower side				
	(+)					
QL	(b)	absent			Brazil provide	1
		present			Yangbaek	9

	English	français	deutsch	español	Example Varieties Exemples Beispielssorten Variedades ejemplo	Note/ Nota
13.	MS	Petiole: length				
QN	(b)	short			Kanghuck	3
		medium			Namsan	5
		long			Poongsan	7
14.	VG	Petiole: anthocyanin coloration				
QN	(b)	absent or weak			Danbaek	1
		moderate				2
		strong			Dasak	3
15.	VG	Flower: color of corolla				
PQ	(a)	white			BRS Seda	1
		yellowish			Yangbaek	2
		pink			Heuksun	3
16.	VG	Flowering stem: number of flowers per leaf axil				
(*)						
QL	(a)	one			Ansan	1
		more than one			Yangbaek	2
17.	VG	Flowering stem: nectaries				
(+)						
QL	(a)	absent			Masekin	1
		present			Yangbaek	9
18.	VG	Flower: intensity of pink color at outer side of corolla				
(*)						
(+)						
QN	(a)	absent				1
		light			Kanghuck	2
		medium			Yanghuck	3
		dark			Hucksun	4
19.	VG	Flower: intensity of pink color at inner side of lower lip				
(+)						
QN		light			Naman	1
		medium			Dasak	2
		dark			Hucksun	3

	English	français	deutsch	español	Example Varieties Exemples Beispielssorten Variedades ejemplo	Note/ Nota
20.	VG	Flower: pubescence of corolla				
QN	weak				Mihuck	1
	medium				Kanghuck	2
	strong				Kyeonghuck	3
21.	VG	Flower: 'V' mark of inner side of corolla				
(+)						
QL	absent					1
	present				Yangbaek	9
22.	VG	Capsule: number of carpels				
(*)						
(+)						
QL	(c) two				Ansan	1
	more than two					2
23.	MS	Capsule: length				
(+)						
QN	(c) short				Adam	3
	medium				Ansan	5
	long					7
24.	MS	Capsule: width				
(+)						
QN	(c) narrow				Adam	3
	medium				Miheuk	5
	broad					7
25.	VG	Capsule: pubescence				
QN	(c) weak				Mihuck	1
	medium				Poongan	2
	strong				Whangbaek	3
26.	VG	Capsule: color				
QL	(c) green				Yangbaek	1
	yellow				Whangbaek	2
	purple					3

	English	français	deutsch	español	Example Varieties Exemples Beispielssorten Variedades ejemplo	Note/ Nota	
27.	VG	Seed coat: color					
(*)							
PQ	(c)	white			Yangbaek	1	
		grey			Mankum	2	
		gold			Masekin	3	
		brown			Yuyoung	4	
		black			Jingi	5	
28.	VG	Seed coat: texture					
(+)							
QL	(c)	smooth			Yangbaek	1	
		rough			NonggiS1	2	
29.	VG/ MG	Time of beginning of flowering					
(+)							
QN	(a)	early			Jingi	3	
		medium			Yangbaek	5	
		late			Namda	7	
30.	MG	Time of maturity					
(+)							
QN	(c)	early			Manhuck	3	
		medium			Kangbaek	5	
		late			Namda	7	

8. Explanations on the Table of Characteristics

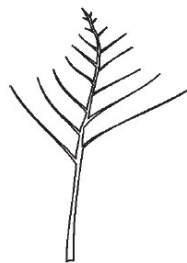
8.1 *Explanations covering several characteristics*

Characteristics containing the following key in the second column of the Table of Characteristics should be examined as indicated below:

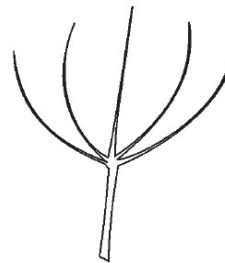
- (a) characteristics should be measured at full flowering stage.(Full flowering stage: 50% of plants with flowers open)
- (b) characteristics related to leaf should be observed at full flowering stage on the middle part of plant.
- (c) characteristics related to capsule and seed should be observed at fully matured stage on the middle part of plant.(Fully matured stage: 50% plant dehiscence of capsule on the main stem)

8.2 *Explanations for individual characteristics*

Ad. 1: Plant: growth type



1
indeterminate



2
determinate

Ad. 2: Plant: number of branches



1
absent or very few

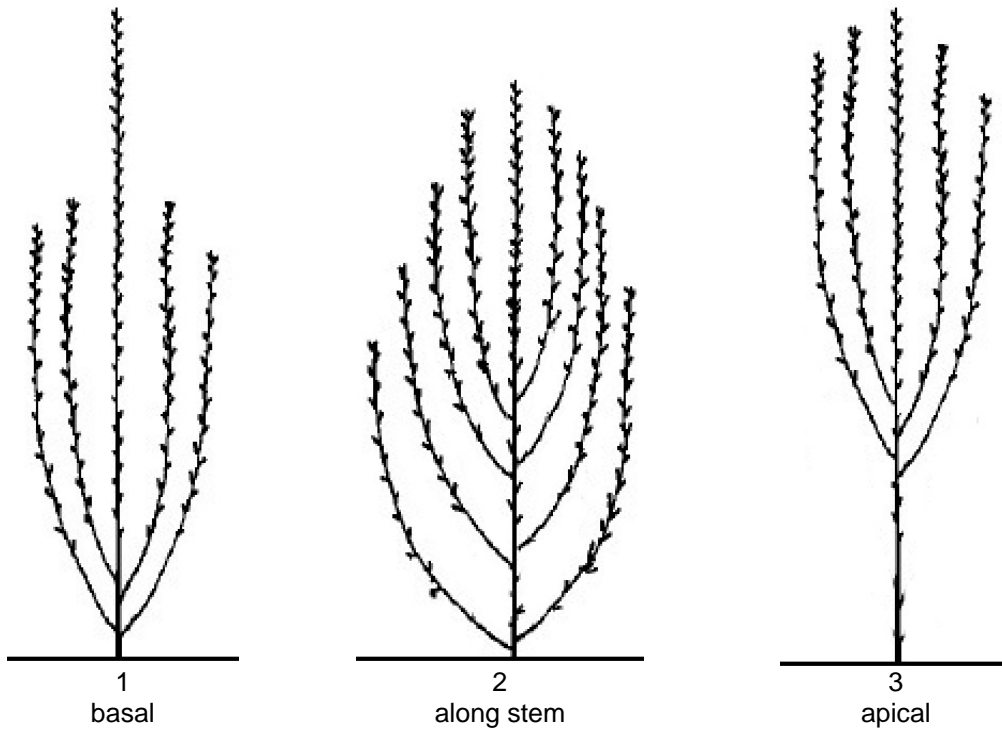


3
moderate



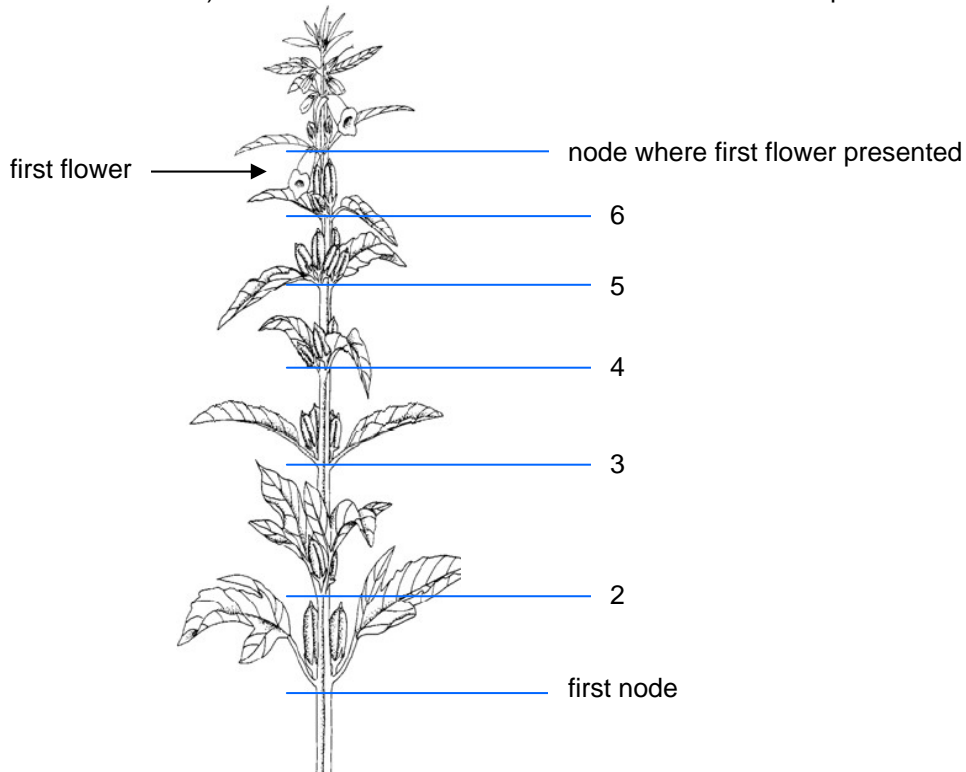
5
very many

Ad. 3: Plant: position of branches



Ad. 4: Stem: number of nodes to first flower

The observation should be made on main stem (the number of nodes on the main stem varies between 4 and 65.) and count from first node to node where first flower presented.

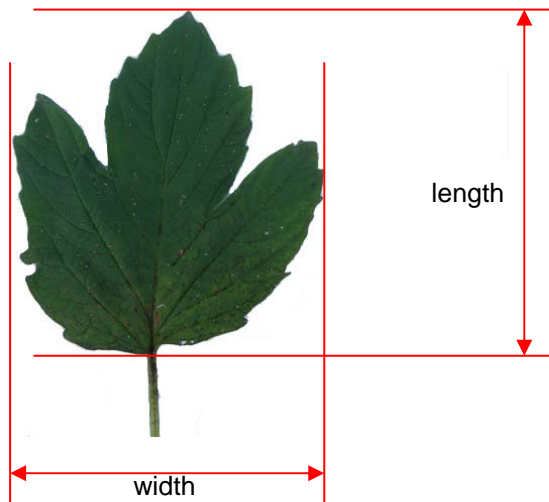


Ad. 6: Stem: length

To be observed at fully matured stage.

Ad. 7: Leaf blade: length

Ad. 8: Leaf blade: width



Ad. 10: Leaf blade: degree of lobing



1
absent or very weak



3
weak



5
medium



7
strong

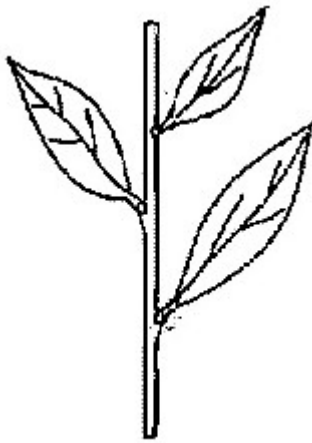


9
very strong

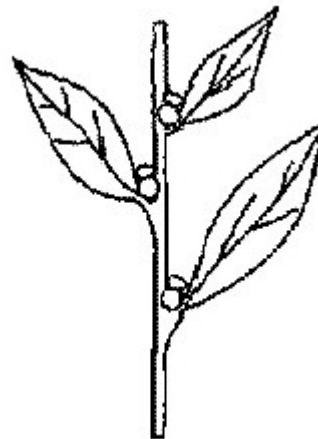
Ad. 16: Flowering stem: number of flowers per leaf axil

Observation should be made on the middle part of the plant.

Ad. 17: Flowering stem: nectaries



1
absent



9
present

Ad. 18: Flower: intensity of pink color at outer side of corolla



1
absent
corolla



2
light



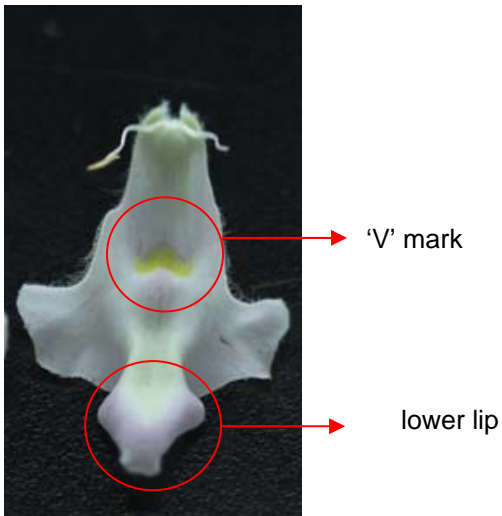
3
medium



4
dark

Ad. 19: Flower: intensity of pink color at inner side of lower lip

Ad. 21: Flower: 'V' mark of inner side of corolla



Ad. 22: Capsule: number of carpels



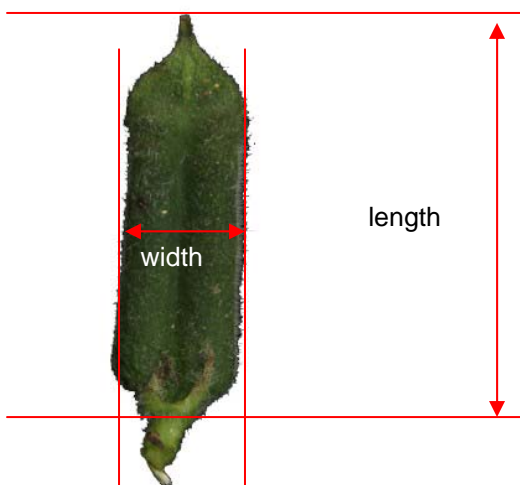
1
two



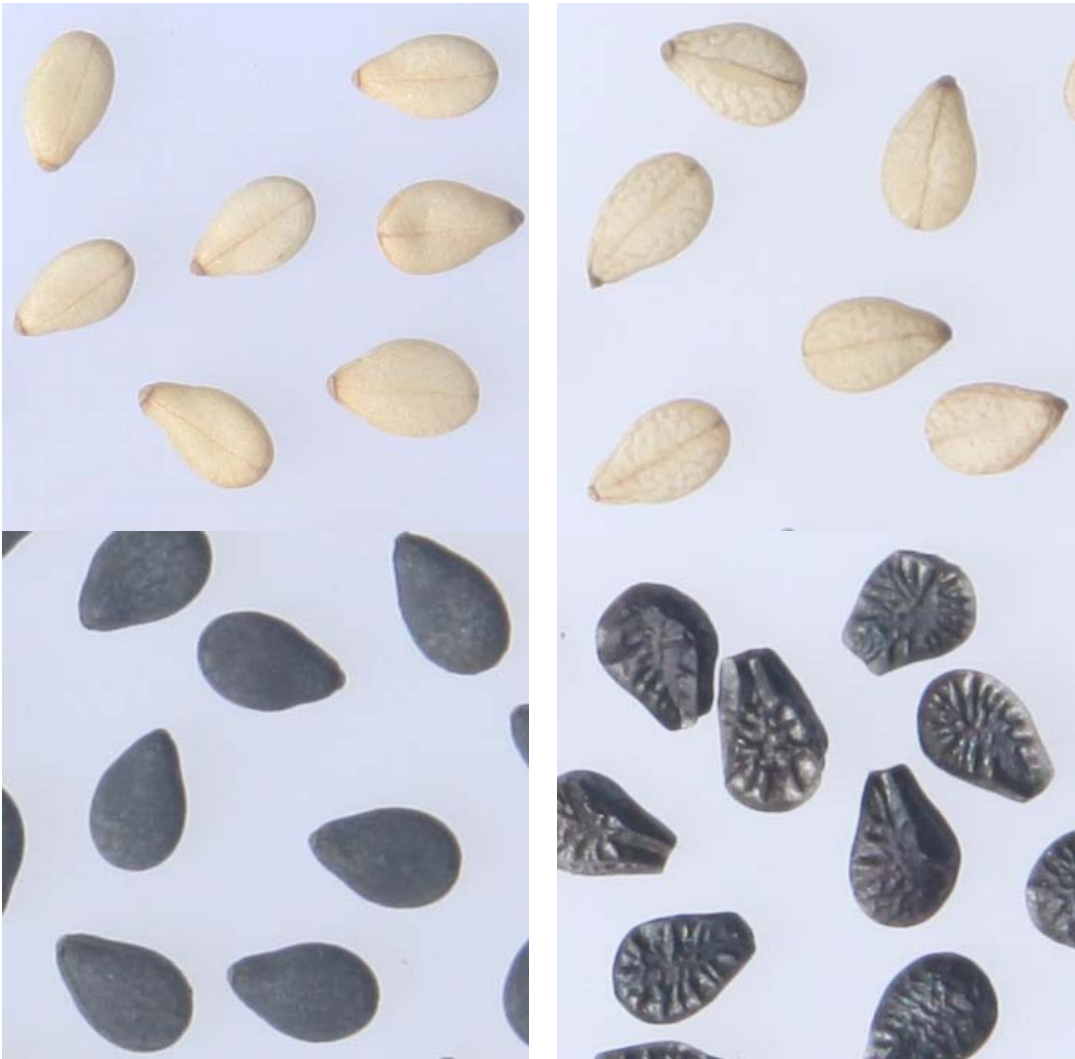
2
more than two

Ad. 23: Capsule: length

Ad. 24: Capsule: width



Ad. 28: Seed coat: texture



1
smooth

2
rough

Ad. 29: Time of beginning of flowering

The time of at least one open flower on 10% of plants.

Ad. 30: Time of maturity

The time of 50% plant dehiscence of capsule on the main stem in one plot.

9. Literature

IPGRI, Descriptors for Sesame. IPGRI. 2004

RDA. Descriptors and guideline for management of Sesame. Korea, 2006

KSVS. Test guideline for Sesame. Korea. 2002

10. Technical Questionnaire

TECHNICAL QUESTIONNAIRE	Page {x} of {y}	Reference Number:
		Application date: (not to be filled in by the applicant)
TECHNICAL QUESTIONNAIRE to be completed in connection with an application for plant breeders' rights		
1. Subject of the Technical Questionnaire		
1.1 Botanical name	<input type="text" value="Sesamum indicum L."/>	
1.2 Common name	<input type="text" value="Sesame"/>	
2. Applicant		
Name	<input type="text"/>	
Address	<input type="text"/>	
Telephone No.	<input type="text"/>	
Fax No.	<input type="text"/>	
E-mail address	<input type="text"/>	
Breeder (if different from applicant)	<input type="text"/>	
3. Proposed denomination and breeder's reference		
Proposed denomination (if available)	<input type="text"/>	
Breeder's reference	<input type="text"/>	

TECHNICAL QUESTIONNAIRE	Page {x} of {y}	Reference Number:
-------------------------	-----------------	-------------------

#4. Information on the breeding scheme and propagation of the variety

4.1 Breeding scheme

Variety resulting from:

4.1.1 Crossing

(a) controlled cross
(please state parent varieties)

(.....) x (.....)
female parent male parent

(b) partially known cross
(please state known parent variety(ies))

(.....) x (.....)
female parent male parent

(c) unknown cross

4.1.2 Mutation
(please state parent variety)

.....

4.1.3 Discovery and development
(please state where and when discovered and how developed)

.....

4.1.4 Other
(please provide details)"

.....

Authorities may allow certain of this information to be provided in a confidential section of the Technical Questionnaire.

4.2 Method of propagating the variety

4.2.1 Seed-propagated varieties

- (a) Self-pollination []
- (b) Cross-pollination
 - (i) population []
 - (ii) synthetic variety []
- (c) Hybrid []
- (d) Other []
(please provide details)"

[]

4.2.2 Vegetatively propagated varieties

- (a) cuttings []
- (b) *in vitro* propagation []
- (c) other (state method) []

4.2.3 Other []
(please provide details)

[]

TECHNICAL QUESTIONNAIRE	Page {x} of {y}	Reference Number:
-------------------------	-----------------	-------------------

5. Characteristics of the variety to be indicated (the number in brackets refers to the corresponding characteristic in Test Guidelines; please mark the note which best corresponds).

Characteristics	Example Varieties	Note
5.1 (1) Plant: growth type		
indeterminate	Yangbeak	1 []
determinate		2 []
5.2 (16) Flowering stem: number of flowers per leaf axil		
one	Ansan	1 []
more than one	Yangbeak	2 []
5.3 (22) Capsule: number of carpels		
two	Ansan	1 []
more than two		2 []
5.4 (27) Seed coat: color		
white	Yangbeak	1 []
grey	Mankum	2 []
yellow	Masekin	3 []
brown	Yuyoung	4 []
black	Jingi	5 []

TECHNICAL QUESTIONNAIRE	Page {x} of {y}	Reference Number:
-------------------------	-----------------	-------------------

6. Similar varieties and differences from these varieties

Please use the following table and box for comments to provide information on how your candidate variety differs from the variety (or varieties) which, to the best of your knowledge, is (or are) most similar. This information may help the examination authority to conduct its examination of distinctness in a more efficient way.

Denomination(s) of variety(ies) similar to your candidate variety	Characteristic(s) in which your candidate variety differs from the similar variety(ies)	Describe the expression of the characteristic(s) for the similar variety(ies)	Describe the expression of the characteristic(s) for your candidate variety
<i>Example</i>	<i>Plant: growth type</i>	<i>indeterminate</i>	<i>determinate</i>

Comments:

TECHNICAL QUESTIONNAIRE	Page {x} of {y}	Reference Number:
-------------------------	-----------------	-------------------

#7. Additional information which may help in the examination of the variety

7.1 In addition to the information provided in sections 5 and 6, are there any additional characteristics which may help to distinguish the variety?

Yes [] No []

(If yes, please provide details)

7.2 Are there any special conditions for growing the variety or conducting the examination?

Yes [] No []

(If yes, please provide details)

7.3 Other information

8. Authorization for release

(a) Does the variety require prior authorization for release under legislation concerning the protection of the environment, human and animal health?

Yes [] No []

(b) Has such authorization been obtained?

Yes [] No []

If the answer to (b) is yes, please attach a copy of the authorization.

Authorities may allow certain of this information to be provided in a confidential section of the Technical Questionnaire.

TECHNICAL QUESTIONNAIRE	Page {x} of {y}	Reference Number:
-------------------------	-----------------	-------------------

9. Information on plant material to be examined or submitted for examination.

9.1 The expression of a characteristic or several characteristics of a variety may be affected by factors, such as pests and disease, chemical treatment (e.g. growth retardants or pesticides), effects of tissue culture, different rootstocks, scions taken from different growth phases of a tree, etc.

9.2 The plant material should not have undergone any treatment which would affect the expression of the characteristics of the variety, unless the competent authorities allow or request such treatment. If the plant material has undergone such treatment, full details of the treatment must be given. In this respect, please indicate below, to the best of your knowledge, if the plant material to be examined has been subjected to:

- | | | |
|---|---------|--------|
| (a) Chemical treatment (e.g. growth retardant, pesticide) | Yes [] | No [] |
| (b) Tissue culture | Yes [] | No [] |
| (c) Other factors | Yes [] | No [] |

Please provide details for where you have indicated "yes".

.....

10. I hereby declare that, to the best of my knowledge, the information provided in this form is correct:

Applicant's name

Signature

Date

[End of document]