

UPOV

TG/PASSI(proj.5)

ORIGINAL: English

DATE: 2008-10-19

**INTERNATIONAL UNION FOR THE PROTECTION OF NEW VARIETIES OF PLANTS**  
GENEVA

**DRAFT**

**GRANADILLA, PASSION FRUIT**

UPOV Code: PASSI\_EDU

*Passiflora edulis* Sims

**GUIDELINES**

**FOR THE CONDUCT OF TESTS**

**FOR DISTINCTNESS, UNIFORMITY AND STABILITY**

*prepared by experts from South Africa*

*to be considered by the Enlarged Editorial Committee at its meeting  
to be held in Geneva, Switzerland, on January 8, 2009*

Alternative Names:\*

<i>Botanical name</i>	<i>English</i>	<i>French</i>	<i>German</i>	<i>Spanish</i>
<i>Passiflora edulis</i> Sims	Granadilla, Passion fruit	Barbadine, Fruit de la passion	Passionsfrucht, Purpurgranadilla	Granadilla, Maracuyá

The purpose of these guidelines (“Test Guidelines”) is to elaborate the principles contained in the General Introduction (document TG/1/3), and its associated TGP documents, into detailed practical guidance for the harmonized examination of distinctness, uniformity and stability (DUS) and, in particular, to identify appropriate characteristics for the examination of DUS and production of harmonized variety descriptions.

**ASSOCIATED DOCUMENTS**

These Test Guidelines should be read in conjunction with the General Introduction and its associated TGP documents.

\* These names were correct at the time of the introduction of these Test Guidelines but may be revised or updated. [Readers are advised to consult the UPOV Code, which can be found on the UPOV Website (www.upov.int), for the latest information.]

<u>TABLE OF CONTENTS</u>	<u>PAGE</u>
1. SUBJECT OF THESE TEST GUIDELINES.....	3
2. MATERIAL REQUIRED .....	3
3. METHOD OF EXAMINATION.....	3
3.1 Number of Growing Cycles .....	3
3.2 Testing Place .....	3
3.3 Conditions for Conducting the Examination.....	3
3.4 Test Design .....	4
3.5 Number of Plants / Parts of Plants to be Examined.....	4
3.6 Additional Tests .....	4
4. ASSESSMENT OF DISTINCTNESS, UNIFORMITY AND STABILITY .....	4
4.1 Distinctness .....	4
4.2 Uniformity.....	5
4.3 Stability .....	5
5. GROUPING OF VARIETIES AND ORGANIZATION OF THE GROWING TRIAL.....	5
6. INTRODUCTION TO THE TABLE OF CHARACTERISTICS .....	6
6.1 Categories of Characteristics.....	6
6.2 States of Expression and Corresponding Notes.....	6
6.3 Types of Expression.....	6
6.4 Example Varieties .....	6
6.5 Legend.....	6
7. TABLE OF CHARACTERISTICS/TABLEAU DES CARACTÈRES/MERKMALSTABELLE/TABLA DE CARACTERES.....	7
8. EXPLANATIONS ON THE TABLE OF CHARACTERISTICS .....	14
8.1 Explanations covering several characteristics .....	14
8.2 Explanations for individual characteristics .....	14
9. LITERATURE .....	17
10. TECHNICAL QUESTIONNAIRE.....	18

## 1. Subject of these Test Guidelines

These Test Guidelines apply to all varieties of *Passiflora edulis* Sims of the family *Passifloraceae*.

## 2. Material Required

2.1 The competent authorities decide on the quantity and quality of the plant material required for testing the variety and when and where it is to be delivered. Applicants submitting material from a State other than that in which the testing takes place must ensure that all customs formalities and phytosanitary requirements are complied with.

2.2 The material is to be supplied in the form of rooted cuttings or young plants.

2.3 The minimum quantity of plant material, to be supplied by the applicant, should be:

5 rooted cuttings or 5 young plants.

2.4 The plant material supplied should be visibly healthy, not lacking in vigor, nor affected by any important pest or disease.

2.5 The plant material should not have undergone any treatment which would affect the expression of the characteristics of the variety, unless the competent authorities allow or request such treatment. If it has been treated, full details of the treatment must be given.

## 3. Method of Examination

### 3.1 *Number of Growing Cycles*

3.1.1 The minimum duration of tests should normally be two independent growing cycles.

3.1.2 The growing cycle is considered to be the period ranging from the beginning of active vegetative growth or flowering, continuing through active vegetative growth or flowering and fruit development and concluding with the harvesting of fruit.

### 3.2 *Testing Place*

Tests are normally conducted at one place. In the case of tests conducted at more than one place, guidance is provided in TGP/9 "Examining Distinctness".

### 3.3 *Conditions for Conducting the Examination*

The tests should be carried out under conditions ensuring satisfactory growth for the expression of the relevant characteristics of the variety and for the conduct of the examination. In particular, it is essential that the plants produce a satisfactory crop of fruit in each of the two growing cycles.

### 3.4 *Test Design*

3.4.1 Each test should be designed to result in a total of at least 5 plants.

3.4.2 The design of the test should be such that plants or parts of plants may be removed for measurement or counting without prejudice to the observations which must be made up to the end of the growing cycle.

### 3.5 *Number of Plants / Parts of Plants to be Examined*

Unless otherwise indicated, all observations should be made on 5 plants or parts taken from each of 5 plants. In the case of parts of plants, the number to be taken from each of the plants should be 2.

### 3.6 *Additional Tests*

Additional tests, for examining relevant characteristics, may be established.

## 4. Assessment of Distinctness, Uniformity and Stability

### 4.1 *Distinctness*

#### 4.1.1 General Recommendations

It is of particular importance for users of these Test Guidelines to consult the General Introduction prior to making decisions regarding distinctness. However, the following points are provided for elaboration or emphasis in these Test Guidelines.

#### 4.1.2 Consistent Differences

The differences observed between varieties may be so clear that more than one growing cycle is not necessary. In addition, in some circumstances, the influence of the environment is not such that more than a single growing cycle is required to provide assurance that the differences observed between varieties are sufficiently consistent. One means of ensuring that a difference in a characteristic, observed in a growing trial, is sufficiently consistent is to examine the characteristic in at least two independent growing cycles.

#### 4.1.3 Clear Differences

Determining whether a difference between two varieties is clear depends on many factors, and should consider, in particular, the type of expression of the characteristic being examined, i.e. whether it is expressed in a qualitative, quantitative, or pseudo-qualitative manner. Therefore, it is important that users of these Test Guidelines are familiar with the recommendations contained in the General Introduction prior to making decisions regarding distinctness.

## 4.2 *Uniformity*

It is of particular importance for users of these Test Guidelines to consult the General Introduction prior to making decisions regarding uniformity. However, the following points are provided for elaboration or emphasis in these Test Guidelines:

For the assessment of uniformity, a population standard of 1% and an acceptance probability of at least 95% should be applied. In the case of a sample size of 5 plants, no off-types are allowed.

## 4.3 *Stability*

4.3.1 In practice, it is not usual to perform tests of stability that produce results as certain as those of the testing of distinctness and uniformity. However, experience has demonstrated that, for many types of variety, when a variety has been shown to be uniform, it can also be considered to be stable.

4.3.2 Where appropriate or in cases of doubt, stability may be tested, either by growing a further generation, or by testing a new plant stock to ensure that it exhibits the same characteristics as those shown by the previous material supplied.

## 5. Grouping of Varieties and Organization of the Growing Trial

5.1 The selection of varieties of common knowledge to be grown in the trial with the candidate varieties and the way in which these varieties are divided into groups to facilitate the assessment of distinctness are aided by the use of grouping characteristics.

5.2 Grouping characteristics are those in which the documented states of expression, even where produced at different locations, can be used, either individually or in combination with other such characteristics: (a) to select varieties of common knowledge that can be excluded from the growing trial used for examination of distinctness; and (b) to organize the growing trial so that similar varieties are grouped together.

5.3 The following have been agreed as useful grouping characteristics:

- (a) Petiole: position of nectaries (characteristic 10)
- (b) Fruit: ratio length/diameter (characteristic 25)
- (c) Fruit: main color of skin (characteristic 26)

Guidance for the use of grouping characteristics, in the process of examining distinctness, is provided through the General Introduction.

## 6. Introduction to the Table of Characteristics

### 6.1 *Categories of Characteristics*

#### 6.1.1 Standard Test Guidelines Characteristics

Standard Test Guidelines characteristics are those which are approved by UPOV for examination of DUS and from which members of the Union can select those suitable for their particular circumstances.

#### 6.1.2 Asterisked Characteristics

Asterisked characteristics (denoted by \*) are those included in the Test Guidelines which are important for the international harmonization of variety descriptions and should always be examined for DUS and included in the variety description by all members of the Union, except when the state of expression of a preceding characteristic or regional environmental conditions render this inappropriate.

### 6.2 *States of Expression and Corresponding Notes*

States of expression are given for each characteristic to define the characteristic and to harmonize descriptions. Each state of expression is allocated a corresponding numerical note for ease of recording of data and for the production and exchange of the description.

### 6.3 *Types of Expression*

An explanation of the types of expression of characteristics (qualitative, quantitative and pseudo-qualitative) is provided in the General Introduction.

### 6.4 *Example Varieties*

Where appropriate, example varieties are provided to clarify the states of expression of each characteristic.

### 6.5 *Legend*

(\*) Asterisked characteristic – see Chapter 6.1.2

QL Qualitative characteristic – see Chapter 6.3

QN Quantitative characteristic – see Chapter 6.3

PQ Pseudo-qualitative characteristic – see Chapter 6.3

(a)-(d) See explanations on the Table of Characteristics in Chapter 8.1

(+) See Explanations on the Table of Characteristics in Chapter 8.2

7. Table of Characteristics/Tableau des caractères/Merkmalstabelle/Tabla de caracteres

	English	français	deutsch	español	Example Varieties/ Exemples/ Beispielsorten/ Variedades ejemplo	Note/ Nota
<b>1.</b>	<b>Vine: color</b>	<b>Vigne : couleur</b>	<b>Ranke: Farbe</b>	<b>Planta trepadora: color</b>		
<b>PQ (a)</b>	light green	vert clair	hellgrün	verde claro	Summer Queen	1
	medium green	vert moyen	mittelgrün	verde medio		2
	dark green	vert foncé	dunkelgrün	verde oscuro	Charité, Ester	3
	green purple	vert pourpre	grünpurpurn	púrpura verdoso		4
	purple	pourpre	purpurn	púrpura		5
<b>2.</b>	<b>Leaf blade: length</b>	<b>Limbe : longueur</b>	<b>Blattspreite: Länge</b>	<b>Limbo: longitud</b>		
<b>QN (b)</b>	short	court	kurz	corto	Charité	3
	medium	moyen	mittel	medio	Summer Queen	5
	long	long	lang	largo	Ruby Star	7
<b>3. (* )</b>	<b>Leaf blade: maximum width</b>	<b>Limbe : largeur maximale</b>	<b>Blattspreite: maximale Breite</b>	<b>Limbo: anchura máxima</b>		
<b>QN (b)</b>	narrow	étroit	schmal	estrecho	Charité	3
	medium	moyen	mittel	medio	Summer Queen	5
	broad	large	breit	ancho	Ruby Star	7
<b>4.</b>	<b>Leaf blade: maximum width of terminal lobe</b>	<b>Limbe : largeur maximale du lobe terminal</b>	<b>Blattspreite: maximale Breite der Endlappung</b>	<b>Limbo: anchura máxima del lóbulo terminal</b>		
<b>QN (b)</b>	narrow	étroit	schmal	estrecha	Charité	3
	medium	moyen	mittel	media	Summer Queen	5
	broad	large	breit	ancha	Ruby Star	7
<b>5. (+)</b>	<b>Leaf blade: depth of sinus</b>	<b>Limbe : profondeur du sinus</b>	<b>Blattspreite: Tiefe der Ausbuchtung</b>	<b>Limbo: profundidad del seno</b>		
<b>QN (b)</b>	shallow	peu profond	flach	poco profundo		3
	medium	moyen	mittel	medio		5
	deep	profond	tief	profundo	Charité, Summer Queen	7

	English	français	deutsch	español	Example Varieties/ Exemples/ Beispielsorten/ Variedades ejemplo	Note/ Nota
<b>6.</b>	<b>Leaf blade: green color</b>	<b>Limbe : couleur verte</b>	<b>Blattspreite: Grünfärbung</b>	<b>Limbo: color verde</b>		
<b>QN (b)</b>	light	claire	hell	claro		3
	medium	moyenne	mittel	medio	Charité	5
	dark	foncée	dunkel	oscuro	Ester	7
<b>7.</b>	<b>Leaf blade: blistering</b>	<b>Limbe : cloûre</b>	<b>Blattspreite: Blasigkeit</b>	<b>Limbo: abullonado</b>		
<b>QL (b)</b>	absent	absente	fehlend	ausente		1
	present	présente	vorhanden	presente		9
<b>8.</b>	<b>Leaf blade: degree of blistering</b>	<b>Limbe : degré de cloûre</b>	<b>Blattspreite: Stärke der Blasigkeit</b>	<b>Limbo: intensidad del abullonado</b>		
<b>QN (b)</b>	weak	faible	gering	débil		3
	medium	moyen	mittel	medio	Ester	5
	strong	fort	stark	fuerte	Charité	7
<b>9.</b>	<b>Petiole: length</b>	<b>Pétiole : longueur</b>	<b>Blattstiel: Länge</b>	<b>Pecíolo: longitud</b>		
<b>QN (b)</b>	short	court	kurz	corto	Charité	3
	medium	moyen	mittel	medio	Summer Queen	5
	long	long	lang	largo	Ruby Star	7
<b>10. (*) (+)</b>	<b>Petiole: position of nectaries</b>	<b>Pétiole : position des nectaires</b>	<b>Blattstiel: Position der Nektarien</b>	<b>Pecíolo: posición de los nectarios</b>		
<b>QL (b)</b>	adjacent to leaf blade	adjacent au limbe	an die Blattspreite anstoßend	adyacentes al limbo	Charité, IAC 273, IAC 277	1
	distant from leaf blade	éloignée du limbe	von der Blattspreite entfernt	distantes del limbo	Summer Queen	2
<b>11. (+)</b>	<b>Flower: length of bract</b>	<b>Fleur : longueur de la bractée</b>	<b>Blüte: Länge des Deckblattes</b>	<b>Flor: longitud de las brácteas</b>		
<b>QN (c)</b>	short	courte	kurz	cortas		3
	medium	moyenne	mittel	medianas	Charité	5
	long	longue	lang	largas	Summer Queen	7



	English	français	deutsch	español	Example Varieties/ Exemples/ Beispielssorten/ Variedades ejemplo	Note/ Nota
<b>12.</b>	<b>Flower: length of sepal</b>	<b>Fleur : longueur du sépale</b>	<b>Blüte: Länge des Kelchblattes</b>	<b>Flor: longitud de los sépalos</b>		
(+)						
<b>QN</b>	(c) short	court	kurz	cortos		3
	medium	moyen	mittel	medianos		5
	long	long	lang	largos		7
<b>13.</b>	<b>Flower: width of sepal</b>	<b>Fleur : largeur du sépale</b>	<b>Blüte: Breite des Kelchblattes</b>	<b>Flor: anchura de los sépalos</b>		
(+)						
<b>QN</b>	(c) narrow	étroit	schmal	estrechos		3
	medium	moyen	mittel	medianos		5
	broad	large	breit	anchos		7
<b>14.</b>	<b>Flower: length of petal</b>	<b>Fleur : longueur du pétale</b>	<b>Blüte: Länge des Blütenblattes</b>	<b>Flor: longitud de los pétalos</b>		
(+)						
<b>QN</b>	(c) short	court	kurz	cortos	Charité	3
	medium	moyen	mittel	medianos		5
	long	long	lang	largos		7
<b>15.</b>	<b>Flower: width of petal</b>	<b>Fleur : largeur du pétale</b>	<b>Blüte: Breite des Blütenblattes</b>	<b>Flor: anchura de los pétalos</b>		
(+)						
<b>QN</b>	(c) narrow	étroit	schmal	estrechos		3
	medium	moyen	mittel	medianos	Charité	5
	broad	large	breit	anchos		7
<b>16.</b>	<b>Flower: presence of spotted ring in throat</b>	<b>Fleur : présence d'un anneau taché dans la gorge</b>	<b>Blüte: Vorhandensein eines fleckigen Rings im Schlund</b>	<b>Flor: presencia de un anillo manchado en el cuello</b>		
(+)						
<b>QL</b>	(c) absent	absente	fehlend	ausente		1
	present	présente	vorhanden	presente	Charité, Summer Queen	9

	English	français	deutsch	español	Example Varieties/ Exemples/ Beispielsorten/ Variedades ejemplo	Note/ Nota
<b>17.</b>	<b>Flower: intensity of color of spotted ring in throat</b>	<b>Fleur : intensité de la couleur de l'anneau taché dans la gorge</b>	<b>Blüte: Intensität der Farbe des fleckigen Rings im Schlund</b>	<b>Flor: intensidad del color del anillo manchado en el cuello</b>		
(+)						
<b>QN</b>	(c) light	claire	hell	claro		1
	medium	moyenne	mittel	medio	Charité	2
	dark	foncée	dunkel	oscuro		3
<b>18.</b>	<b>Flower: diameter of corona filaments</b>	<b>Fleur : diamètre des filaments de la partie supérieure</b>	<b>Blüte: Durchmesser der Kronenstaubfäden</b>	<b>Flor: diámetro de los filamentos de la corona</b>		
(+)						
<b>QN</b>	(c) small	petit	klein	pequeño	Summer Queen	1
	medium	moyen	mittel	medio	Charité	2
	large	large	groß	grande		3
<b>19.</b>	<b>Flower: presence of purple rings on corona filaments</b>	<b>Fleur : présence d'anneaux pourpres sur les filaments de la partie supérieure</b>	<b>Blüte: Vorhandensein purpurner Ringe an den Kronenstaubfäden</b>	<b>Flor: presencia de anillos de color púrpura en los filamentos de la corona</b>		
(+)						
<b>QL</b>	(c) absent	absente	fehlend	ausentes	Charité	1
	present	présente	vorhanden	presentes		9
<b>20.</b>	<b>Flower: width of purple rings on corona filaments</b>	<b>Fleur : largeur des anneaux pourpres sur les filaments de la partie supérieure</b>	<b>Blüte: Breite der purpurnen Ringe an den Kronenstaubfäden</b>	<b>Flor: anchura de los anillos color púrpura de los filamentos de la corona</b>		
(+)						
<b>QN</b>	(c) narrow	étroite	schmal	estrechos		3
	medium	moyenne	mittel	medianos		5
	broad	large	breit	anchos		7
<b>21.</b>	<b>Flower: intensity of color of purple rings on corona filaments</b>	<b>Fleur : intensité de la couleur des anneaux pourpres sur les filaments de la partie supérieure</b>	<b>Blüte: Intensität der Farbe der purpurnen Ringe an den Kronenstaubfäden</b>	<b>Flor: intensidad del color púrpura de los anillos de los filamentos de la corona</b>		
(+)						
<b>QN</b>	(c) light	claire	hell	claro		1
	medium	moyenne	mittel	medio	Charité	2
	dark	foncée	dunkel	oscuro		3

	English	français	deutsch	español	Example Varieties/ Exemples/ Beispielssorten/ Variedades ejemplo	Note/ Nota
<b>22.</b>	<b>Flower: spots on distal part of corona filaments</b>	<b>Fleur : taches sur la partie distale des filaments de la partie supérieure</b>	<b>Blüte: Flecken am distalen Teil der Kronenstaubfäden</b>	<b>Flor: manchas en la parte distal de los filamentos de la corona</b>		
<b>QL</b>	(c) absent	absentes	fehlend	ausentes	Charité, Summer Queen	1
	present	présentes	vorhanden	presentes		9
<b>23. (*)</b>	<b>Fruit: length</b>	<b>Fruit : longueur</b>	<b>Frucht: Länge</b>	<b>Fruto: longitud</b>		
<b>QN</b>	(d) short	courte	kurz	corto	Charité	3
	medium	moyenne	mittel	medio	Ester	5
	long	longue	lang	largo	Ruby Star, Summer Queen	7
<b>24. (*)</b>	<b>Fruit: diameter</b>	<b>Fruit : diamètre</b>	<b>Frucht: Durchmesser</b>	<b>Fruto: diámetro</b>		
<b>QN</b>	(d) small	petit	klein	pequeño	Charité, Ester	3
	medium	moyen	mittel	medio	Ruby Star, Summer Queen	5
	large	grand	groß	grande		7
<b>25. (*)</b>	<b>Fruit: ratio length/diameter</b>	<b>Fruit : rapport longueur/diamètre</b>	<b>Frucht: Verhältnis Länge/Durchmesser</b>	<b>Fruto: relación longitud/diámetro</b>		
<b>QN</b>	(d) very small	très petit	sehr klein	muy pequeña	Charité	1
	small	petit	klein	pequeña		3
	medium	moyen	mittel	media	Ruby Star, Summer Queen	5
	large	grand	groß	grande		7
	very large	très grand	sehr groß	muy grande	Ester	9
<b>26. (*)</b>	<b>Fruit: color of skin</b>	<b>Fruit : couleur de la peau</b>	<b>Frucht: Farbe der Schale</b>	<b>Fruto: color de la piel</b>		
<b>PQ</b>	(d) yellow	jaune	gelb	amarillo	IAC 273, IAC 275, IAC 277	1
	red	rouge	rot	rojo	Panama Red	2
	dark purple	pourpre foncé	dunkelpurpurn	púrpura oscuro	Australian purple	3

	English	français	deutsch	español	Example Varieties/ Exemples/ Beispielssorten/ Variedades ejemplo	Note/ Nota
<b>27.</b>	<b>Fruit: conspicuousness of lenticels</b>	<b>Fruit : netteté des lenticelles</b>	<b>Frucht: Ausprägung der Lentizellen</b>	<b>Fruto: visibilidad de las lenticelas</b>		
<b>QL</b>	(d) inconspicuous	peu nette	undeutlich	no visibles		1
	conspicuous	nette	deutlich	visibles	Charité, Summer Queen	2
<b>28.</b>	<b>Fruit: thickness of skin</b>	<b>Fruit : épaisseur de la peau</b>	<b>Frucht: Dicke der Schale</b>	<b>Fruto: grosor de la piel</b>		
<b>QN</b>	(d) thin	fine	dünn	delgada	Charité	3
	medium	moyenne	mittel	media	Ester, Summer Queen	5
	thick	épaisse	dick	gruesa		7
<b>29.</b>	<b>Fruit: size of seed</b>	<b>Fruit : taille de la semence</b>	<b>Frucht: Größe des Samens</b>	<b>Fruto: tamaño de la semilla</b>		
<b>QN</b>	(d) small	petite	klein	pequeña		3
	medium	moyenne	mittel	media	Charité, Ruby Star	5
	large	grande	groß	grande	Summer Queen	7
<b>30.</b>	<b>Fruit: color of foeniculum</b>	<b>Fruit : couleur du foeniculum</b>	<b>Frucht: Farbe des Foeniculums</b>	<b>Fruto: color del foeniculum</b>		
(+)						
<b>QL</b>	(d) white to yellowish	blanc à jaunâtre	weiß bis gelblich	blanco a amarillento	Charité	1
	pink to red	rose à rouge	rosa bis rot	rosa a rojo	Summer Queen	2
<b>31.</b>	<b>Fruit: color of pulp</b>	<b>Fruit : couleur de la chair</b>	<b>Frucht: Farbe des Fleisches</b>	<b>Fruto: color de la pulpa (arilo)</b>		
(+)						
<b>PQ</b>	(d) whitish	blanchâtre	weißlich	blanquecino		1
	green yellow	jaune verdâtre	grüngelb	amarillo verdoso		2
	yellow	jaune	gelb	amarillo	Charité, IAC Paulista	3
	yellow orange	orange jaune	gelborange	amarillo anaranjado	Ester, IAC 273, Summer Queen	4
	orange	orange	orange	anaranjado	IAC 275	5

	English	français	deutsch	español	Example Varieties/ Exemples/ Beispielsorten/ Variedades ejemplo	Note/ Nota
<b>32.</b>	<b>Plant: time of first crop bearing</b>	<b>Plante : époque de la première fructification</b>	<b>Pflanze: Zeitpunkt des ersten Fruchttragens</b>	<b>Planta: época de la primera cosecha</b>		
(+)						
<b>QN</b>	early	précoce	früh	temprana	Ester	3
	medium	moyenne	mittel	media	Charité	5
	late	tardive	spät	tardía		7
<b>33.</b>	<b>Time of main harvest</b>	<b>Époque de la récolte principale</b>	<b>Zeitpunkt der Haupternte</b>	<b>Época de la cosecha principal</b>		
(+)						
<b>QN</b>	early	précoce	früh	temprana	Charité	3
	medium	moyenne	mittel	media		5
	late	tardive	spät	tardía		7

8. Explanations on the Table of Characteristics

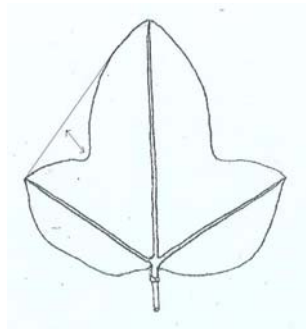
8.1 *Explanations covering several characteristics*

Characteristics containing the following key in the second column of the Table of Characteristics should be examined as indicated below:

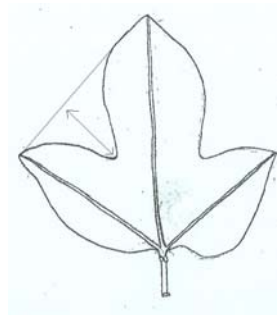
- (a) Vine: Observations should be made on vigorous current season's shoots.
- (b) Leaf blade and petiole: Observations on the leaf blade and the petiole should be made on fully developed leaves from the middle third of vigorous current-season shoots.
- (c) Flower: Observations on the flower should be made on fully opened flowers.
- (d) Fruit: Observations on the fruit should be made on 10 typical fruits at the time of ripeness for eating.

8.2 *Explanations for individual characteristics*

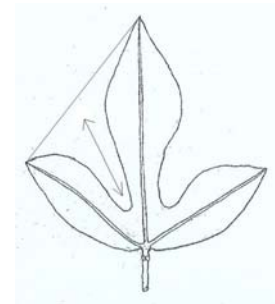
Ad. 5: Leaf blade: depth of sinus



3  
shallow

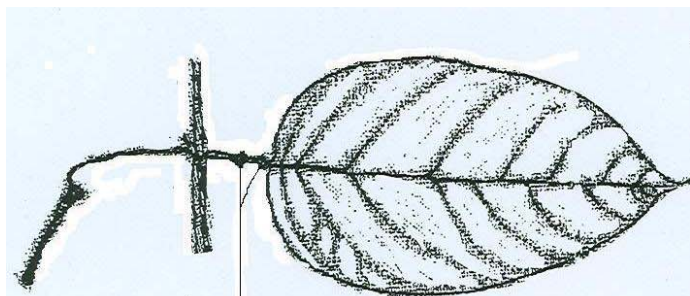


5  
medium

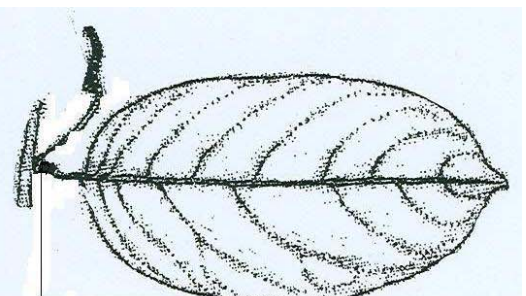


7  
deep

Ad. 10: Petiole: position of nectaries



nectaries adjacent to  
leaf blade



nectaries distant from  
leaf blade

Ad. 11: Flower: length of bract

Ad. 12: Flower: length of sepal

Ad. 13: Flower: width of sepal

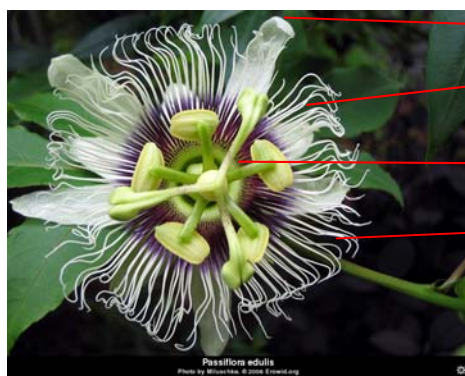
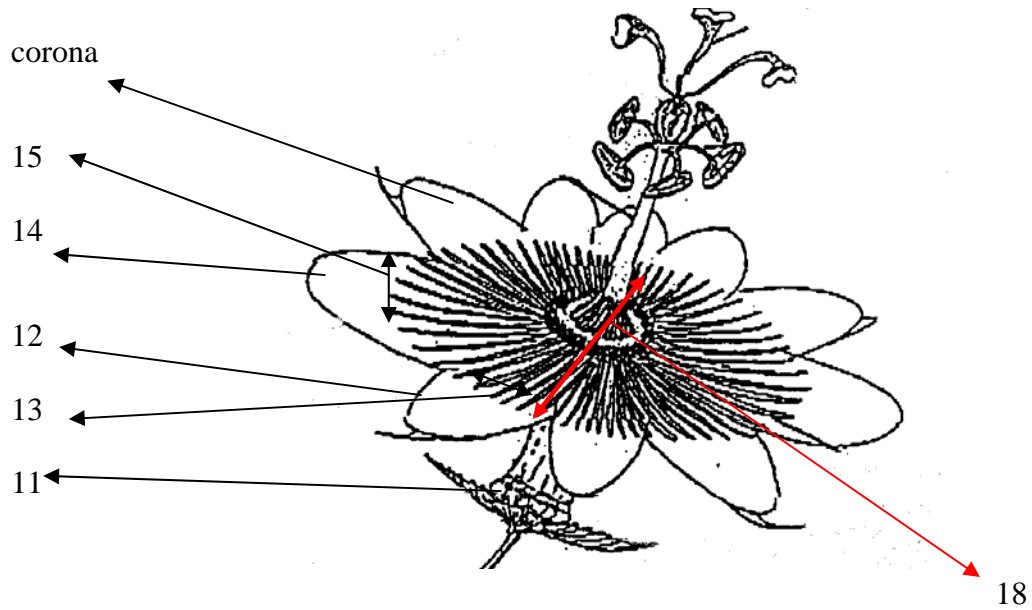
Ad. 14: Flower: length of petal

Ad. 15: Flower: width of petal

Ad. 16: Flower: presence of spotted ring in throat

Ad. 17: Flower: intensity of color of spotted ring in throat

Ad. 18: Flower: diameter of corona filaments



Sepal

Petal

Spotted ring in throat

Distal part of corona filaments

Ad. 19: Flower: presence of purple rings on corona filaments

Ad. 22: Flower: spots on distal part of corona filaments

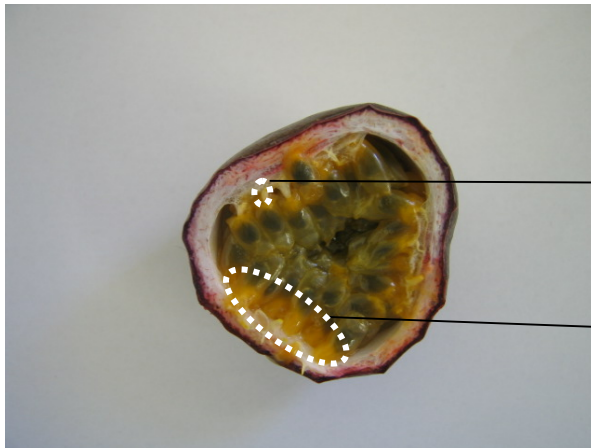


spots on distal part  
of corona filaments

purple rings on corona filament

Ad. 30: Fruit: color of foeniculum

Ad. 31: Fruit: color of pulp



color of foeniculum

color of pulp

Ad. 32: Plant: time of first crop bearing

Time from planting until first harvest.

Ad. 33: Time of main harvest

Time in season when the largest flush of fruit is ripe.



9. Literature

Van der Plank, J., 1991: Passion Flowers and Passion Fruit. The MIT Press Cambridge, Massachusetts, US, 176 pp.

10. Technical Questionnaire

TECHNICAL QUESTIONNAIRE	Page {x} of {y}	Reference Number:
		Application date: (not to be filled in by the applicant)
<b>TECHNICAL QUESTIONNAIRE</b> to be completed in connection with an application for plant breeders' rights		
1. Subject of the Technical Questionnaire		
1.1 Botanical name	<input type="text" value="Passiflora edulis Sims"/>	
1.2 Common name	<input type="text" value="Granadilla, Passion fruit"/>	
2. Applicant		
Name	<input type="text"/>	
Address	<input type="text"/>	
Telephone No.	<input type="text"/>	
Fax No.	<input type="text"/>	
E-mail address	<input type="text"/>	
Breeder (if different from applicant)	<input type="text"/>	
3. Proposed denomination and breeder's reference		
Proposed denomination (if available)	<input type="text"/>	
Breeder's reference	<input type="text"/>	

TECHNICAL QUESTIONNAIRE	Page {x} of {y}	Reference Number:
-------------------------	-----------------	-------------------

#4. Information on the breeding scheme and propagation of the variety

4.1 Breeding scheme

Variety resulting from:

4.1.1 Crossing

- (a) controlled cross [ ]  
(please state parent varieties)
- (b) partially known cross [ ]  
(please state known parent variety(ies))
- (c) unknown cross [ ]

4.1.2 Mutation [ ]  
(please state parent variety)

4.1.3 Discovery and development [ ]  
(please state where and when discovered and how developed)

4.1.4 Other (please provide details) [ ]

4.2 Method of propagating the variety

4.2.1 Vegetative propagation

- (a) cuttings [ ]
- (b) *in vitro* propagation [ ]
- (c) other (state method) [ ]

4.2.2 Other (please provide details) [ ]

---

# Authorities may allow certain of this information to be provided in a confidential section of the Technical Questionnaire.

TECHNICAL QUESTIONNAIRE	Page {x} of {y}	Reference Number:
-------------------------	-----------------	-------------------

5. Characteristics of the variety to be indicated (the number in brackets refers to the corresponding characteristic in the Test Guidelines; please mark the note which best corresponds).

Characteristics	Example Varieties	Note
<b>5.1 Leaf blade: blistering (7)</b>		
absent		1[ ]
present		9[ ]
<b>5.2 Fruit: ratio length/diameter (25)</b>		
very small	Charité	1[ ]
small		3[ ]
medium	Ruby Star, Summer Queen	5[ ]
large		7[ ]
very large	Ester	9[ ]
<b>5.3 Fruit: color of skin (26)</b>		
yellow	IAC 273, IAC 275, IAC 277	1[ ]
red	Panama Red	2[ ]
dark purple	Australian purple	3[ ]

TECHNICAL QUESTIONNAIRE	Page {x} of {y}	Reference Number:
-------------------------	-----------------	-------------------

6. Similar varieties and differences from these varieties

Please use the following table and box for comments to provide information on how your candidate variety differs from the variety (or varieties) which, to the best of your knowledge, is (or are) most similar. This information may help the examination authority to conduct its examination of distinctness in a more efficient way.

Denomination(s) of variety(ies) similar to your candidate variety	Characteristic(s) in which your candidate variety differs from the similar variety(ies)	Describe the expression of the characteristic(s) for the <b>similar</b> variety(ies)	Describe the expression of the characteristic(s) for <b>your</b> candidate variety
---	---	--	--

<i>Example</i>	<i>Fruit color</i>	<i>purple</i>	<i>yellow</i>
----------------	--------------------	---------------	---------------

--	--	--	--

--	--	--	--

--	--	--	--

Comments:

TECHNICAL QUESTIONNAIRE	Page {x} of {y}	Reference Number:
-------------------------	-----------------	-------------------

#7. Additional information which may help in the examination of the variety

7.1 In addition to the information provided in sections 5 and 6, are there any additional characteristics which may help to distinguish the variety?

Yes [ ] No [ ]

(If yes, please provide details)

7.2 Are there any special conditions for growing the variety or conducting the examination?

Yes [ ] No [ ]

(If yes, please provide details)

7.3 Other information

A representative color photograph of the variety should accompany the Technical Questionnaire.

---

8. Authorization for release

(a) Does the variety require prior authorization for release under legislation concerning the protection of the environment, human and animal health?

Yes [ ] No [ ]

(b) Has such authorization been obtained?

Yes [ ] No [ ]

If the answer to (b) is yes, please attach a copy of the authorization.

---

# Authorities may allow certain of this information to be provided in a confidential section of the Technical Questionnaire.

TECHNICAL QUESTIONNAIRE	Page {x} of {y}	Reference Number:
-------------------------	-----------------	-------------------

9. Information on plant material to be examined or submitted for examination.

9.1 The expression of a characteristic or several characteristics of a variety may be affected by factors, such as pests and disease, chemical treatment (e.g. growth retardants or pesticides), effects of tissue culture, different rootstocks, scions taken from different growth phases of a tree, etc.

9.2 The plant material should not have undergone any treatment which would affect the expression of the characteristics of the variety, unless the competent authorities allow or request such treatment. If the plant material has undergone such treatment, full details of the treatment must be given. In this respect, please indicate below, to the best of your knowledge, if the plant material to be examined has been subjected to:

- |   |         |        |
|---|---------|--------|
| (a) Microorganisms (e.g. virus, bacteria, phytoplasma)    | Yes [ ] | No [ ] |
| (b) Chemical treatment (e.g. growth retardant, pesticide) | Yes [ ] | No [ ] |
| (c) Tissue culture  | Yes [ ] | No [ ] |
| (d) Other factors   | Yes [ ] | No [ ] |

Please provide details for where you have indicated "yes".

.....

9.3 Has the plant material to be examined been tested for the presence of virus or other pathogens?

Yes [ ] No [ ]

(If yes, please provide details as specified by the Authority)

10. I hereby declare that, to the best of my knowledge, the information provided in this form is correct:

Applicant's name

Signature

Date

[End of document]