

UPOV

TG/ANGLN(proj.3)

ORIGINAL: English

DATE: 2007-01-12

INTERNATIONAL UNION FOR THE PROTECTION OF NEW VARIETIES OF PLANTS

GENEVA

DRAFT

Angelonia angustifolia Benth.
and its hybrids

UPOV Code: ANGLN_ANG
and linked hybrid codes

GUIDELINES

FOR THE CONDUCT OF TESTS

FOR DISTINCTNESS, UNIFORMITY AND STABILITY

prepared by an expert from Australia

*to be considered by the Technical Committee at its forty-third session,
to be held in Geneva, Switzerland, from March 26 to 28, 2007*

Alternative Names:*

<i>Botanical name</i>	<i>English</i>	<i>French</i>	<i>German</i>	<i>Spanish</i>
<i>Angelonia angustifolia</i> Benth.				

The purpose of these guidelines ("Test Guidelines") is to elaborate the principles contained in the General Introduction (document TG/1/3), and its associated TGP documents, into detailed practical guidance for the harmonized examination of distinctness, uniformity and stability (DUS) and, in particular, to identify appropriate characteristics for the examination of DUS and production of harmonized variety descriptions.

ASSOCIATED DOCUMENTS

These Test Guidelines should be read in conjunction with the General Introduction and its associated TGP documents.

* These names were correct at the time of the introduction of these Test Guidelines but may be revised or updated. [Readers are advised to consult the UPOV Code, which can be found on the UPOV Website (www.upov.int), for the latest information.]

<u>TABLE OF CONTENTS</u>	<u>PAGE</u>
1. SUBJECT OF THESE TEST GUIDELINES	3
2. MATERIAL REQUIRED	3
3. METHOD OF EXAMINATION.....	3
3.1 Number of Growing Cycles.....	3
3.2 Testing Place.....	3
3.3 Conditions for Conducting the Examination.....	3
3.4 Test Design	4
3.5 Number of Plants / Parts of Plants to be Examined.....	4
3.6 Additional Tests	4
4. ASSESSMENT OF DISTINCTNESS, UNIFORMITY AND STABILITY.....	4
4.1 Distinctness	4
4.2 Uniformity.....	5
4.3 Stability.....	5
5. GROUPING OF VARIETIES AND ORGANIZATION OF THE GROWING TRIAL.....	5
6. INTRODUCTION TO THE TABLE OF CHARACTERISTICS.....	6
6.1 Categories of Characteristics.....	6
6.2 States of Expression and Corresponding Notes.....	6
6.3 Types of Expression	6
6.4 Example Varieties	7
6.5 Legend.....	7
7. TABLE OF CHARACTERISTICS/TABLEAU DES CARACTÈRES/MERKMALSTABELLE/TABLA DE CARACTERES.....	8
8. EXPLANATIONS ON THE TABLE OF CHARACTERISTICS	14
8.1 Explanations covering several characteristics	14
8.2 Explanations for individual characteristics.....	14
9. LITERATURE.....	18
10. TECHNICAL QUESTIONNAIRE.....	19

1. Subject of these Test Guidelines

These Test Guidelines apply to all varieties of *Angelonia angustifolia* Benth. and their hybrids of the family *Scrophulariaceae*.

2. Material Required

2.1 The competent authorities decide on the quantity and quality of the plant material required for testing the variety and when and where it is to be delivered. Applicants submitting material from a State other than that in which the testing takes place must ensure that all customs formalities and phytosanitary requirements are complied with.

2.2 The material is to be supplied in the form of rooted cuttings or seed.

2.3 The minimum quantity of plant material, to be supplied by the applicant, should be:

vegetatively propagated varieties: 15 rooted cuttings
seed-propagated varieties: sufficient seed to produce 30 plants

2.4 The plant material supplied should be visibly healthy, not lacking in vigor, nor affected by any important pest or disease.

2.5 The plant material should not have undergone any treatment which would affect the expression of the characteristics of the variety, unless the competent authorities allow or request such treatment. If it has been treated, full details of the treatment must be given.

3. Method of Examination

3.1 *Number of Growing Cycles*

The minimum duration of tests should normally be a single growing cycle.

3.2 *Testing Place*

Tests are normally conducted at one place. In the case of tests conducted at more than one place, guidance is provided in TGP/9 "Examining Distinctness".

3.3 *Conditions for Conducting the Examination*

3.3.1 The tests should be carried out under conditions ensuring satisfactory growth for the expression of the relevant characteristics of the variety and for the conduct of the examination.

3.3.2 *Observation of color by eye*

Because daylight varies, color determinations made against a color chart should be made either in a suitable cabinet providing artificial daylight or in the middle of the day in a room without direct sunlight. The spectral distribution of the illuminant for artificial daylight should conform with the CIE Standard of Preferred Daylight D 6500 and should fall within

the tolerances set out in the British Standard 950, Part I. These determinations should be made with the plant part placed against a white background.

3.4 *Test Design*

3.4.1 Vegetatively propagated varieties: each test should be designed to result in a total of at least 15 plants.

3.4.2 Seed propagated varieties: each test should be designed to result in a total of at least 30 plants.

3.4.3 The design of the tests should be such that plants or parts of plants may be removed for measurement or counting without prejudice to the observations which must be made up to the end of the growing cycle.

3.5 *Number of Plants / Parts of Plants to be Examined*

3.5.1 Vegetatively propagated varieties: unless otherwise indicated, all observations on single plants should be made on 15 plants or parts taken from each of 15 plants and any other observations made on all plants in the test.

3.5.2 Seed propagated varieties: unless otherwise indicated, all observations on single plants should be made on 30 plants or parts taken from each of 30 plants and any other observations made on all plants in the test.

3.6 *Additional Tests*

Additional tests, for examining relevant characteristics, may be established.

4. Assessment of Distinctness, Uniformity and Stability

4.1 *Distinctness*

4.1.1 *General Recommendations*

It is of particular importance for users of these Test Guidelines to consult the General Introduction prior to making decisions regarding distinctness. However, the following points are provided for elaboration or emphasis in these Test Guidelines.

4.1.2 *Consistent Differences*

The differences observed between varieties may be so clear that more than one growing cycle is not necessary. In addition, in some circumstances, the influence of the environment is not such that more than a single growing cycle is required to provide assurance that the differences observed between varieties are sufficiently consistent. One means of ensuring that a difference in a characteristic, observed in a growing trial, is sufficiently consistent is to examine the characteristic in at least two independent growing cycles.

4.1.3 Clear Differences

Determining whether a difference between two varieties is clear depends on many factors, and should consider, in particular, the type of expression of the characteristic being examined, i.e. whether it is expressed in a qualitative, quantitative, or pseudo-qualitative manner. Therefore, it is important that users of these Test Guidelines are familiar with the recommendations contained in the General Introduction prior to making decisions regarding distinctness.

4.2 *Uniformity*

4.2.1 It is of particular importance for users of these Test Guidelines to consult the General Introduction prior to making decisions regarding uniformity. However, the following points are provided for elaboration or emphasis in these Test Guidelines.

4.2.2 For the assessment of uniformity of vegetatively propagated varieties, a population standard of 1% and an acceptance probability of at least 95% should be applied. In the case of a sample size of 15 plants, 1 off-type is allowed.

4.2.3 For the assessment of uniformity of seed-propagated varieties which are self-pollinated, a population standard of 1% and an acceptance probability of at least 95% should be applied. In the case of a sample size of 20 plants, one off type is allowed.

4.2.4 For the assessment of uniformity of seed-propagated varieties which are cross pollinated or hybrids, the recommendations in the General Introduction for cross pollinated or hybrids varieties should be followed, as appropriate.

4.3 *Stability*

4.3.1 In practice, it is not usual to perform tests of stability that produce results as certain as those of the testing of distinctness and uniformity. However, experience has demonstrated that, for many types of variety, when a variety has been shown to be uniform, it can also be considered to be stable.

4.3.2 Where appropriate, or in cases of doubt, stability may be tested, either by growing a further generation, or by testing a new plant stock to ensure that it exhibits the same characteristics as those shown by the previous material supplied.

5. Grouping of Varieties and Organization of the Growing Trial

5.1 The selection of varieties of common knowledge to be grown in the trial with the candidate varieties and the way in which these varieties are divided into groups to facilitate the assessment of distinctness are aided by the use of grouping characteristics.

5.2 Grouping characteristics are those in which the documented states of expression, even where produced at different locations, can be used, either individually or in combination with other such characteristics: (a) to select varieties of common knowledge that can be excluded from the growing trial used for examination of distinctness; and (b) to organize the growing trial so that similar varieties are grouped together.

5.3 The following have been agreed as useful grouping characteristics:

- (a) Plant: growth habit (characteristic 1)
- (b) Corolla lobes: presence of stripes (characteristic 11)
- (c) Only varieties with stripes absent: Upper lip: main color on corolla lobes (characteristic 12) with the following groups:
 - Gr. 1: white
 - Gr. 2: pink
 - Gr. 3: violet
- (d) Only varieties with stripes absent: Lower lip: main color on corolla lobes (characteristic 13) with the following groups:
 - Gr. 1: white
 - Gr. 2: pink
 - Gr. 3: violet

5.4 Guidance for the use of grouping characteristics, in the process of examining distinctness, is provided through the General Introduction.

6. Introduction to the Table of Characteristics

6.1 *Categories of Characteristics*

6.1.1 Standard Test Guidelines Characteristics

Standard Test Guidelines characteristics are those which are approved by UPOV for examination of DUS and from which members of the Union can select those suitable for their particular circumstances.

6.1.2 Asterisked Characteristics

Asterisked characteristics (denoted by *) are those included in the Test Guidelines which are important for the international harmonization of variety descriptions and should always be examined for DUS and included in the variety description by all members of the Union, except when the state of expression of a preceding characteristic or regional environmental conditions render this inappropriate.

6.2 *States of Expression and Corresponding Notes*

States of expression are given for each characteristic to define the characteristic and to harmonize descriptions. Each state of expression is allocated a corresponding numerical note for ease of recording of data and for the production and exchange of the description.

6.3 *Types of Expression*

An explanation of the types of expression of characteristics (qualitative, quantitative and pseudo-qualitative) is provided in the General Introduction.

6.4 *Example Varieties*

Where appropriate, example varieties are provided to clarify the states of expression of each characteristic.

6.5 *Legend*

(*) Asterisked characteristic – see Chapter 6.1.2

QL: Qualitative characteristic – see Chapter 6.3

QN: Quantitative characteristic – see Chapter 6.3

PQ: Pseudo-qualitative characteristic – see Chapter 6.3

(a)-(d) See Explanations on the Table of Characteristics in Chapter 8.1

(+) See Explanations on the Table of Characteristics in Chapter 8.2

7. Table of Characteristics/Tableau des caractères/Merkmalstabelle/Tabla de caracteres

	English	français	deutsch	español	Example Varieties Exemples Beispielssorten Variedades ejemplo	Note/ Nota
1. (*)	Plant: growth habit	Plante: port	Pflanze: Wuchsform	Planta: porte		
QN (a)	upright	dressé	aufrecht	erecto	Balangdepi, Balangimla	1
	spreading	divergent	breitwüchsig	rastrero	Balangbeke, Balangbawi	2
2.	Shoot: length	Tige: longueur	Trieb: Länge	Rama: longitud		
QN (a)	short	courte	kurz	corta	Balangloud	3
	medium	moyenne	mittel	media	Balangwitim	5
	long	longue	lang	larga	Anpink	7
3.	Shoot: anthocyanin coloration below the inflorescence	Tige: pigmentation anthocyannique sous l'inflorescence	Trieb: Anthocyanfärbung unter dem Blütenstand	Rama: pigmentación antociánica debajo de la inflorescencia		
QN (a)	absent or very weak	absente ou très faible	fehlend oder sehr gering	ausente o muy débil	Balangloud, Balangbeke	1
	weak	faible	gering	débil	Balangimpu, Balangimla	3
	medium	moyenne	mittel	media	Balangdepi	5
	strong	forte	stark	fuerte	Balangpurup, Cartbas Depur,	7
4. (*)	Leaf: length	Feuille: longueur	Blatt: Länge	Hoja: longitud		
QN (b)	short	courte	kurz	corta	Balangloud	3
	medium	moyenne	mittel	media	Balangwitim	5
	long	longue	lang	larga	Anwhit	7
5. (*)	Leaf: width	Feuille: largeur	Blatt: Breite	Hoja: anchura		
QN (b)	narrow	étroite	schmal	estrecha	Balangbawi, Balangbeke	3
	medium	moyenne	mittel	media	Balangdepi	5
	broad	large	breit	ancha	Balangimpu	7

	English	français	deutsch	español	Example Varieties Exemples Beispielssorten Variedades ejemplo	Note/ Nota
6.	Leaf: intensity of green color on upper side	Feuille: intensité de la couleur verte sur la face supérieure	Blatt: Intensität der Grünfärbung an der Oberseite	Hoja: intensidad del color verde del haz		
QN (b)	light	claire	hell	clara		3
	medium	moyenne	mittel	media	Balanglound	5
	dark	obscure	dunkel	oscura	Balangbeke	7
7.	Leaf: glossiness on upper side	Feuille: brillance de la face supérieure	Blatt: Glanz an der Oberseite	Hoja: brillo del haz		
QN (b)	absent or very weak	absente ou très faible	fehlend oder sehr gering	ausente o muy débil	Balanglound	1
	weak	faible	gering	débil	Balangpili	3
	medium	moyenne	mittel	medio	Balanglapi	5
	strong	forte	stark	fuerte	Balangbeke	7
8. (* (+)	Flower: length	Fleur: longueur	Blüte: Länge	Flor: longitud		
QN (c)	short	courte	kurz	corta	Balangimla	3
	medium	moyenne	mittel	media	Balangbawi	5
	long	longue	lang	larga	Cartbas Whit	7
9. (* (+)	Flower: width	Fleur: largeur	Blüte: Breite	Flor: anchura		
QN (c)	narrow	étroite	schmal	estrecha	Balangimla	3
	medium	moyenne	mittel	media	Balangbawi	5
	broad	large	breit	ancha	Cartbas Whit	7
10. (+)	Flower: reflexing of corolla lobes	Fleur: enroulement des lobes de la corolle	Blüte: Biegung der Kronlappen	Flor: curvatura de los lóbulos de la corola		
QN (c) (d)	absent or weak	absent ou faible	fehlend oder gering	ausente o débil		1
	medium	moyen	mittel	media		2
	strong	fort	stark	fuerte		3

	English	français	deutsch	español	Example Varieties Exemples Beispielssorten Variedades ejemplo	Note/ Nota
11. (*)	Corolla lobes: presence of stripes	Lobes de la corolle: présence de stries	Kronlappen: Vorhandensein von Streifen	Lóbulos de la corola: estrías		
QL	(c) absent (d) present	absentes présentes	fehlend vorhanden	ausentes presentes	Balangimla Balanglast	1 9
12. (*)	<u>Only varieties with stripes absent:</u> Upper lip: main color on corolla lobes	<u>Seulement les variétés à stries absentes:</u> lèvre <u>supérieure:</u> couleur principale des lobes de la corolle	<u>Nur Sorten ohne Streifen: Oberlippe:</u> Hauptfarbe der Kronlappen	<u>Sólo variedades con estrías ausentes:</u> Labio <u>superior:</u> color principal de los lóbulos de la corola		
PQ	(c) RHS Colour Chart (d) (indicate reference number)	Code RHS des couleurs (indiquer le numéro de référence)	RHS-Farbkarte (Nummer angeben)	Carta de colores RHS (indíquese el número de referencia)		
13. (*)	<u>Only varieties with stripes absent:</u> Lower lip: main color on corolla lobes	<u>Seulement les variétés à stries absentes:</u> lèvre <u>inférieure:</u> couleur principale des lobes de la corolle	<u>Nur Sorten ohne Streifen: Unterlippe:</u> Hauptfarbe der Kronlappen	<u>Sólo variedades con estrías ausentes:</u> Labio <u>inferior:</u> color principal de los lóbulos de la corola		
PQ	(c) RHS Colour Chart (d) (indicate reference number)	Code RHS des couleurs (indiquer le numéro de référence)	RHS-Farbkarte (Nummer angeben)	Carta de colores RHS (indíquese el número de referencia)		
14. (*)	<u>Only varieties with stripes present:</u> Corolla lobes: ground color	<u>Seulement les variétés à stries présentes:</u> lobes de la corolle: couleur de fond	<u>Nur Sorten mit Streifen:</u> Kronlappen: Grundfarbe	<u>Sólo variedades con estrías presentes:</u> Lóbulos de la corola: color de fondo		
PQ	(c) RHS Colour Chart (d) (indicate reference number)	Code RHS des couleurs (indiquer le numéro de référence)	RHS-Farbkarte (Nummer angeben)	Carta de colores RHS (indíquese el número de referencia)		
15. (*)	<u>Only varieties with stripes present:</u> Corolla lobes: color of stripes	<u>Seulement les variétés à stries présentes:</u> lobes de la corolle: couleur des stries	<u>Nur Sorten mit Streifen:</u> Kronlappen: Farbe der Streifen	<u>Sólo variedades con estrías presentes:</u> Lóbulos de la corola: color de las estrías		
PQ	(c) RHS Colour Chart (d) (indicate reference number)	Code RHS des couleurs (indiquer le numéro de référence)	RHS-Farbkarte (Nummer angeben)	Carta de colores RHS (indíquese el número de referencia)		

	English	français	deutsch	español	Example Varieties Exemples Beispielssorten Variedades ejemplo	Note/ Nota
16. (*)	<u>Only varieties with stripes present:</u> Lower lip: width of stripes	<u>Seulement les variétés à stries présentes:</u> lèvre inférieure: largeur des stries	<u>Nur Sorten mit Streifen:</u> Unterlippe: Breite der Streifen	<u>Sólo variedades con estrías presentes:</u> Labio inferior: anchura de las estrías		
QN	(c) narrow (d)	étroites	schmal	estrecha		3
	medium	moyennes	mittel	media	Anstern	5
	broad	larges	breit	ancha	AngelMist Purple Stripe	7
17. (+)	Lower lip: undulation of margin	Lèvre inférieure: ondulation du bord	Unterlippe: Randwellung	Labio inferior: ondulación del borde		
QN	(c) absent or very weak (d)	absente ou très faible	fehlend oder sehr gering	ausente o muy débil		1
	weak	faible	gering	débil		3
	medium	moyenne	mittel	media		5
	strong	forte	stark	fuerte		7
18. (+)	Chamber: length	Chambre: longueur	Kammer: Länge	Cavidad: longitud		
QN	(c) short (d)	courte	kurz	corta		3
	medium	moyenne	mittel	media	Balangimla	5
	long	longue	lang	larga		7
19. (+)	Chamber: width	Chambre: largeur	Kammer: Breite	Cavidad: anchura		
QN	(c) narrow (d)	étroite	schmal	estrecha		3
	medium	moyenne	mittel	media	Balangimla	5
	broad	large	breit	ancha		7

	English	français	deutsch	español	Example Varieties Exemples Beispielssorten Variedades ejemplo	Note/ Nota
20.	Chamber: length in relation to width	Chambre: longueur par rapport à la largeur	Kammer: Länge im Verhältnis zur Breite	Cavidad: relación longitud/anchura		
(+)						
QN	(c) longer than broad (d)	plus longue que large	länger als breit	más larga que ancha		1
	as long as broad	aussi longue que large	so lang wie breit	tan larga como ancha		2
	broader than long	plus large que longue	breiter als lang	más ancha que larga		3
21.	Chamber: color of markings	Chambre: couleur des marques	Kammer: Farbe der Sprenkelung	Cavidad: color de las marcas		
PQ	(c) yellow green (d)	vert jaune	gelbgrün	verde amarillento		1
	purple red	rouge pourpre	purpurrot	rojo púrpura		2
	violet	violet	violett	violeta		3
22.	Chamber: intensity of markings	Chambre: intensité des marques	Kammer: Intensität der Sprenkelung	Cavidad: intensidad de las marcas		
QN	(c) absent or very weak (d)	absente ou très faible	fehlend oder sehr gering	ausentes o muy débiles	Balangbawi, Cart White	1
	weak	faible	gering	débiles		3
	medium	moyenne	mittel	medias		5
	strong	forte	stark	fuertes	Balangimla, Balangimpu	7
23.	Chamber: density of markings	Chambre: densité des marques	Kammer: Dichte der Sprenkelung	Cavidad: densidad de las marcas		
(*) (+)						
QN	(c) sparse (d)	faible	locker	baja		1
	medium	moyenne	mittel	media		2
	dense	dense	dicht	alta		3

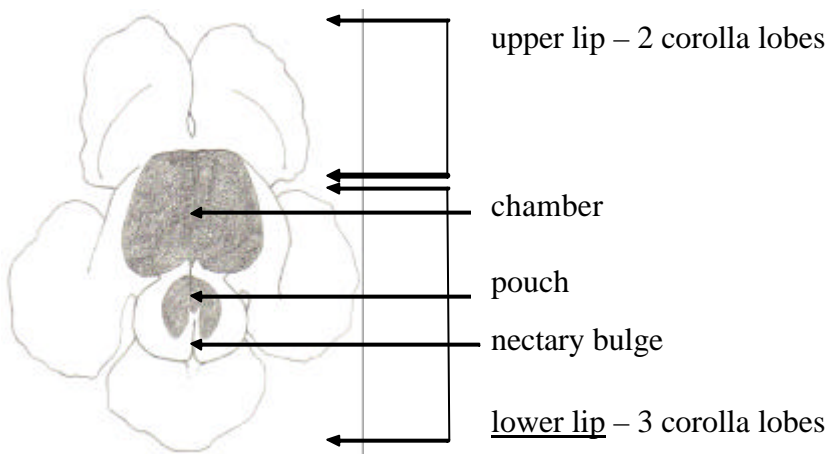
	English	français	deutsch	español	Example Varieties Exemples Beispielssorten Variedades ejemplo	Note/ Nota
24.	Pouch: main color	Poche: couleur principale	Beutel: Hauptfarbe	Gibosidad: color principal		
(+)						
PQ	(c) white (d)	blanc	weiß	blanco		1
	yellow green	vert jaune	gelbgrün	verde amarillento		2
	purple red	rouge pourpre	purpurrot	rojo púrpura		3
	violet	violet	violett	violeta		4
25.	Nectary bulge: main color	Bourrelet du nectaire: couleur principale	Verdickung der Nektarie: Hauptfarbe	Protuberancia del nectario: color principal		
(*)						
PQ	(c) white (d)	blanc	weiß	blanco		1
	purple red	rouge pourpre	purpurrot	rojo púrpura		2
	violet	violet	violett	violeta		3

8. Explanations on the Table of Characteristics

8.1 *Explanations covering several characteristics*

Characteristics containing the following key in the second column of the Table of Characteristics should be examined as indicated below:

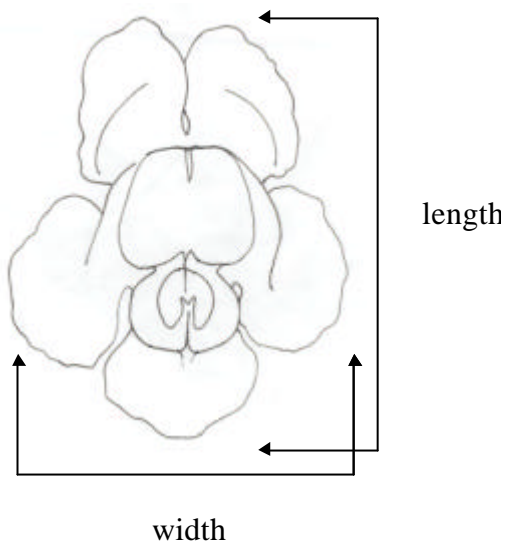
- (a) Observations on the plant and shoot should be made on fully flowering plants.
- (b) Observations on the leaf should be made on leaves taken from the middle part of the shoot.
- (c) Observations on the flower and flower parts should be made just prior to anthesis.
- (d) Flower parts:



8.2 *Explanations for individual characteristics*

Ad. 8: Flower: length

Ad. 9: Flower: width



Ad. 10: Flower: reflexing of corolla lobes



1
absent or weak



2
medium



3
strong

Ad. 17: Lower lip: undulation of margin



1
absent or very weak



3
weak



5
medium

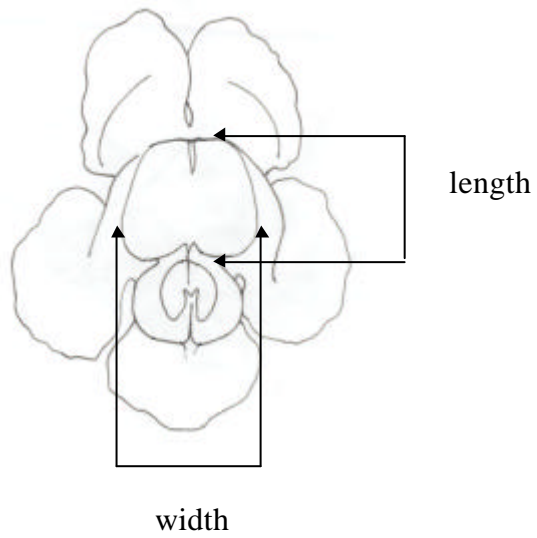


7
strong

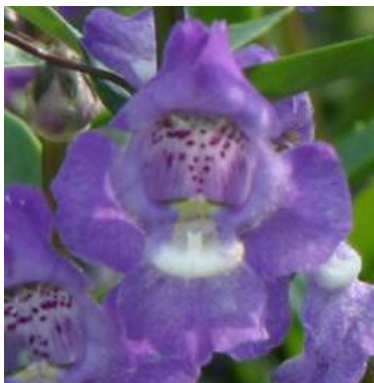
Ad. 18: Chamber: length

Ad. 19: Chamber: width

Ad. 20: Chamber: length in relation to width



Ad. 23: Chamber: density of markings



1
sparse



2
medium



3
dense

Ad. 24 Pouch: main colour



1
white



2
yellow green



3
purple red



4
violet

Ad. 25: Nectary bulge: main color



1
white



2
purple red



3
violet

9. Literature

Liberty Hyde Bailey Hortorium, 1976: Hortus Third, Macmillan Publishing Company

10. Technical Questionnaire

TECHNICAL QUESTIONNAIRE	Page {x} of {y}	Reference Number:
-------------------------	-----------------	-------------------

	Application date: (not to be filled in by the applicant)
--	---

TECHNICAL QUESTIONNAIRE
to be completed in connection with an application for plant breeders' rights

1. Subject of the Technical Questionnaire

1.1 Botanical name []

Hybrid: please indicate the name(s) of species used in the crossing

1.2.1 Botanical name(s) []

1.2.2 Common name

2. Applicant

Name

Address

Telephone No.

Fax No.

E-mail address

Breeder (if different from applicant)

TECHNICAL QUESTIONNAIRE	Page {x} of {y}	Reference Number:
-------------------------	-----------------	-------------------

3. Proposed denomination and breeder's reference

Proposed denomination
(if available)

Breeder's reference

#4. Information on the breeding scheme and propagation of the variety

4.1 Breeding scheme

Variety resulting from:

4.1.1 Crossing

(a) controlled cross
(please state parent varieties)

(b) partially known cross
(please state known parent variety(ies))

(c) unknown cross

4.1.2 Mutation
(please state parent variety)

4.1.3 Discovery and development
(please state where and when discovered
and how developed)

4.1.4 Other
(please provide details)

Authorities may allow certain of this information to be provided in a confidential section of the Technical Questionnaire.

TECHNICAL QUESTIONNAIRE	Page {x} of {y}	Reference Number:
-------------------------	-----------------	-------------------

4.2 Method of propagating the variety

4.2.1 Vegetative propagation

- (a) cuttings []
- (b) *in vitro* propagation []
- (c) other (state method) []

4.2.2 Seed []

4.2.3 Other []
 (please provide details)

5. Characteristics of the variety to be indicated (the number in brackets refers to the corresponding characteristic in Test Guidelines; please mark the note which best corresponds).

Characteristics	Example Varieties	Note
5.1 Plant: growth habit (1)		
upright	Balangdepi, Balangimla	1 []
spreading	Balangbeke, Balangbawi	2 []
5.2 Corolla lobes: presence of stripes (11)		
absent	Balangimla	1 []
present	Balanglast	9 []
5.3 (i) <u>Only varieties with stripes absent: Upper lip: main color on corolla lobes</u> (12)		
RHS Colour Chart (indicate reference number)		

TECHNICAL QUESTIONNAIRE	Page {x} of {y}	Reference Number:
-------------------------	-----------------	-------------------

Characteristics	Example Varieties	Note
5.3 (ii) <u>Only varieties with stripes absent: Upper lip: main color on</u>		
(12) corolla lobes		
white		1 []
pink		2 []
violet		3 []
Other color (indicate) ...		4 []
5.4 (i) <u>Only varieties with stripes absent: Lower lip: main color on</u>		
(13) corolla lobes		
RHS Colour Chart (indicate reference number)		
5.4 (ii) <u>Only varieties with stripes absent: Lower lip: main color on</u>		
(13) corolla lobes		
white		1 []
pink		2 []
violet		3 []
Other color (indicate) ...		4 []

TECHNICAL QUESTIONNAIRE	Page {x} of {y}	Reference Number:
-------------------------	-----------------	-------------------

6. Similar varieties and differences from these varieties

Please use the following table and box for comments to provide information on how your candidate variety differs from the variety (or varieties) which, to the best of your knowledge, is (or are) most similar. This information may help the examination authority to conduct its examination of distinctness in a more efficient way.

Denomination(s) of variety(ies) similar to your candidate variety	Characteristic(s) in which your candidate variety differs from the similar variety(ies)	Describe the expression of the characteristic(s) for the similar variety(ies)	Describe the expression of the characteristic(s) for your candidate variety
<i>Example</i>	<i>Plant: growth habit</i>	<i>upright</i>	<i>spreading</i>

Comments:

TECHNICAL QUESTIONNAIRE	Page {x} of {y}	Reference Number:
-------------------------	-----------------	-------------------

#7. Additional information which may help in the examination of the variety

7.1 In addition to the information provided in sections 5 and 6, are there any additional characteristics which may help to distinguish the variety?

Yes [] No []

(If yes, please provide details)

7.2 Are there any special conditions for growing the variety or conducting the examination?

Yes [] No []

(If yes, please provide details)

7.3 Other information

A representative color photograph of the variety should accompany the Technical Questionnaire.

8. Authorization for release

(a) Does the variety require prior authorization for release under legislation concerning the protection of the environment, human and animal health?

Yes [] No []

(b) Has such authorization been obtained?

Yes [] No []

If the answer to (b) is yes, please attach a copy of the authorization.

Authorities may allow certain of this information to be provided in a confidential section of the Technical Questionnaire.

TECHNICAL QUESTIONNAIRE	Page {x} of {y}	Reference Number:
-------------------------	-----------------	-------------------

9. Information on plant material to be examined or submitted for examination.

9.1 The expression of a characteristic or several characteristics of a variety may be affected by factors, such as pests and disease, chemical treatment (e.g. growth retardants or pesticides), effects of tissue culture, different rootstocks, scions taken from different growth phases of a tree, etc.

9.2 The plant material should not have undergone any treatment which would affect the expression of the characteristics of the variety, unless the competent authorities allow or request such treatment. If the plant material has undergone such treatment, full details of the treatment must be given. In this respect, please indicate below, to the best of your knowledge, if the plant material to be examined has been subjected to:

- | | | |
|---|---------|--------|
| (a) Microorganisms (e.g. virus, bacteria, phytoplasma) | Yes [] | No [] |
| (b) Chemical treatment (e.g. growth retardant, pesticide) | Yes [] | No [] |
| (c) Tissue culture | Yes [] | No [] |
| (d) Other factors | Yes [] | No [] |

Please provide details for where you have indicated “yes”.

.....

10. I hereby declare that, to the best of my knowledge, the information provided in this form is correct:

Applicant's name

Signature

Date

[End of document]