



TC/47/20

ORIGINAL: englisch

DATUM: 3. März 2011

**INTERNATIONALER VERBAND ZUM SCHUTZ VON PFLANZENZÜCHTUNGEN**  
GENEVE

**TECHNISCHER AUSSCHUSS**

**Siebenundvierzigste Tagung**  
**Genf, 4.- 6. April 2011**

**TGP/8: PRÜFUNGSANLAGE UND VERFAHREN FÜR DIE PRÜFUNG DER  
UNTERSCHIEDBARKEIT, DER HOMOGENITÄT UND DER BESTÄNDIGKEIT**

*vom Verbandsbüro erstelltes Dokument*

1. Zweck dieses Dokuments ist es, über die Entwicklungen in bezug auf Dokument TGP/8 „Prüfungsanlage und Verfahren für die Prüfung der Unterscheidbarkeit, der Homogenität und der Beständigkeit“ (Dokument TGP/8/2) zu berichten gemäß dem vom Technischen Ausschuss (TC) auf seiner sechsendvierzigsten Tagung vom 22. bis 24. März 2010 in Genf gebilligten Ansatz (vergleiche Dokument TC/46/15 „Bericht über die Entschließungen“ Absätze 18 und 20) und den Erörterungen der Technischen Arbeitsgruppen (TWP) auf ihren Tagungen im Jahr 2010.

2. Folgende Abkürzungen werden in diesem Dokument verwendet:

CAJ:	Verwaltungs- und Rechtsausschuß
TC:	Technischer Ausschuß
TC-EDC:	Erweiterter Redaktionsausschuß
TWA:	Technische Arbeitsgruppe für landwirtschaftliche Arten
TWC:	Technische Arbeitsgruppe für Automatisierung und Computerprogramme
TWF:	Technische Arbeitsgruppe für Obstarten
TWO:	Technische Arbeitsgruppe für Zierpflanzen und forstliche Baumarten
TWP:	Technische Arbeitsgruppen
TWV:	Technische Arbeitsgruppe für Gemüsearten

## 3. Der Aufbau des Dokuments ist nachstehend zusammengefaßt:

I	HINTERGRUND .....	4
II.	NEU ZU ERSTELLENDEN ABSCHNITTE FÜR EINE KÜNFTIGE ÜBERARBEITUNG VON TGP/8 (DOKUMENT TGP/8/2) .....	5
	<u>Vom TC auf seiner fünfundvierzigsten Tagung vereinbarte neue Abschnitte</u> .....	5
	<u>Vom TC auf seiner sechsendvierzigsten Tagung vereinbarte neue Abschnitte</u> .....	5
	<u>Seminar über die DUS-Prüfung</u> .....	6
	<u>Erörterungen der Ausarbeitung neuer Abschnitte für Dokument TGP/8 in den Technischen Arbeitsgruppen auf ihren Tagungen im Jahr 2010</u> .....	7
III.	ÜBERARBEITUNG BESTEHENDER ABSCHNITTE VON DOKUMENT TGP/8/1 ZUR AUSARBEITUNG FÜR EINE KÜNFTIGE ÜBERARBEITUNG (DOKUMENT TGP/8/2) .....	12
	<u>Überarbeitung der vom TC auf seiner sechsendvierzigsten Tagung vereinbarten Abschnitte von Dokument TGP/8/1</u> .....	12
	<u>Erörterungen der Überarbeitung bestehender Abschnitte für Dokument TGP/8 in den Technischen Arbeitsgruppen auf ihren Tagungen im Jahr 2010</u> .....	13
IV.	ARBEITSPLAN FÜR DIE AUSARBEITUNG DER VERSCHIEDENEN ABSCHNITTE VON TGP/8/2 .....	15

ANLAGE I	TGP/8 TEIL I: DUS-PRÜFUNGSANLAGE UND DATENANALYSE Neuer Abschnitt 2 - Zu erfassende Daten (Verfasser: Herr Uwe Meyer (Deutschland))
ANLAGE II	TGP/8 TEIL I: DUS-PRÜFUNGSANLAGE UND DATENANALYSE Neuer Abschnitt 3 - Kontrolle der Variation infolge verschiedener Erfasser (Verfasser: Herr Gerie van der Heijden (Niederlande))
ANLAGE III	TGP/8 TEIL II: DUS-PRÜFUNGSANLAGE UND DATENANALYSE Neuer Abschnitt 6 - Verfahren für die Datenverarbeitung für die Prüfung der Unterscheidbarkeit und die Erstellung von Sortenbeschreibungen (Verfasser: Sachverständige aus Deutschland, Finnland, Frankreich, Japan, Kenia und dem Vereinigten Königreich)
ANLAGE IV	TGP/8 TEIL I: DUS-PRÜFUNGSANLAGE UND DATENANALYSE Neuer Abschnitt - Informationen über angemessene ackerbauliche Verfahren für die DUS-Feldprüfungen (Verfasser: Frau Anne Weitz (Europäische Union) mit Beteiligung von Argentinien und Frankreich)
ANLAGE V	TGP/8 TEIL II: VERFAHREN FÜR DIE DUS-PRÜFUNG Neuer Abschnitt nach COYU - Statistische Verfahren für sehr kleine Probengrößen (Verfasser: Herr Gerie van der Heijden (Niederlande))
ANLAGE VI	TGP/8 TEIL II: VERFAHREN FÜR DIE DUS-PRÜFUNG Neuer Abschnitt 11 - Prüfung an Mischproben: (Verfasser: Herr Kristian Kristensen (Dänemark))
ANLAGE VII	TGP/8 TEIL II: VERFAHREN FÜR DIE DUS-PRÜFUNG Neuer Abschnitt 12 - Prüfung von Merkmalen anhand der Bildanalyse (Verfasser: Herr Gerie van der Heijden (Niederlande))
ANLAGE VIII	TGP/8 TEIL II: VERFAHREN FÜR DIE DUS-PRÜFUNG Neuer Abschnitt 13 - Verfahren für die Datenverarbeitung für die Prüfung der Unterscheidbarkeit und die Erstellung von Sortenbeschreibungen (Verfasser: Sachverständige aus Deutschland, Finnland, Frankreich, Japan, Kenia und dem Vereinigten Königreich)
ANLAGE IX	TGP/8 TEIL II: VERFAHREN FÜR DIE DUS-PRÜFUNG Neuer Abschnitt - Anleitung zur Datenanalyse von randomisierten Blindprüfungen (Verfasser: Frankreich und Israel geben Beispiele an)
ANLAGE X	TGP/8 TEIL II: VERFAHREN FÜR DIE DUS-PRÜFUNG Neuer Abschnitt - statistische Verfahren für visuell erfaßte Merkmale (Verfasser: Experten aus Dänemark, Frankreich und dem Vereinigten Königreich)

- ANLAGE XI TGP/8 TEIL II: VERFAHREN FÜR DIE DUS-PRÜFUNG  
Neuer Abschnitt - Anleitung zu der Entwicklung von Sortenbeschreibungen (Verfasser zu bestimmen)
- ANLAGE XII TGP/8 TEIL II: VERFAHREN FÜR DIE DUS-PRÜFUNG  
Abschnitt 4 - 2x1%-Verfahren - Mindestanzahl Freiheitsgrade für das 2x1%Verfahren (Verfasser zu bestimmen)
- ANLAGE XIII TGP/8 TEIL II: VERFAHREN FÜR DIE DUS-PRÜFUNG  
Abschnitt 9 - Das kombinierte Homogenitätskriterium über mehrere Jahre (COYU)  
Mindestanzahl Freiheitsgrade für COYU (Verfasser zu bestimmen)
- ANLAGE XIV TGP/8 TEIL II: VERFAHREN FÜR DIE DUS-PRÜFUNG  
Abschnitt 10 - Mindestanzahl vergleichbarer Sorten für das Verfahren der relativen Varianz (Verfasser: Herr Nik Hulse (Australien))
- Anlage XV ARBEITSPLAN FÜR DIE AUSARBEITUNG VON TGP/8

## I. HINTERGRUND

4. Der Erweiterte Redaktionsausschuß (TC-EDC) merkte auf seiner Sitzung vom 8. Januar 2009 an, daß das Dokument TGP/8/1 Draft 1 verschiedene Abschnitte enthalte, deren Ausarbeitung noch nicht begonnen habe oder für die eine erhebliche weitere Ausarbeitung erforderlich sein werde. Zugleich wies der TC-EDC darauf hin, daß eine Reihe wichtiger Abschnitte in Dokument TGP/8 angemessen fertiggestellt seien und bereits zweckmäßige Anleitung geben könnten. Der TC-EDC schlug daher vor, daß der TC ersucht werden soll, die Annahme einer ersten Fassung des Dokuments TGP/8 (Dokument TGP/8/1) ohne die Abschnitte jenes Dokuments, die erheblich weiter ausgearbeitet werden müßten, zu erwägen. Der TC-EDC erwähnte ferner, daß die Ermittlung des angemessen fertiggestellten Wortlauts in Dokument TGP/8 eine Übersetzung jener Abschnitte rechtfertigen würde. Hinsichtlich der Abschnitte des Dokuments TGP/8, die nicht in die erste Fassung des Dokuments TGP/8 (Dokument TGP/8/1) aufgenommen würden, schlug der TC-EDC vor, daß jene Abschnitte unverzüglich weiter ausgearbeitet und mittels einer möglichst umgehenden Überarbeitung des Dokuments TGP/8 (Dokument TGP/8/2) in das Dokument TGP/8 aufgenommen werden sollten.

5. Der TC vereinbarte auf seiner fünfundvierzigsten Tagung vom 30. März bis 1. April 2009 in Genf, daß das Dokument TGP/8/1 aufgrund des in das Dokument TGP/8/1 Draft 12 aufgenommenen Inhalts zur Annahme im Jahre 2010 vorgesehen werden sollte. Der TC vereinbarte ferner, daß die aus Dokument TGP/8/1 Draft 12 weggelassenen Abschnitte, wie in Dokument TC/45/14, Anlage I wiedergegeben, getrennt von der Prüfung des Entwurfs des Dokuments TGP/8/1 gleichzeitig unverzüglich weiter ausgearbeitet und mittels einer Überarbeitung des Dokuments TGP/8/1 (d. h. Dokument TGP/8/2) möglichst umgehend in das Dokument TGP/8 aufgenommen werden sollten (vergleiche Dokumente TC/45/5 "TGP-Dokumente" Absatz 24 und TC/45/16, „Bericht“, Absatz 136).

6. Der Technische Ausschuß (TC) vereinbarte auf seiner sechsvierzigsten Tagung vom 22. bis 24. März 2010 in Genf vorbehaltlich der Zustimmung des Verwaltungs- und Rechtsausschusses (CAJ), daß das Dokument TGP/8/1 Draft 15, wie vom TC geändert, dem Rat auf seiner vierundvierzigsten ordentlichen Tagung vom 21. Oktober 2010 in Genf zur Annahme vorgelegt werden solle. Der TC nahm zur Kenntnis, daß die Übersetzungen des englischen Originalwortlauts ins Deutsche, Französische und Spanische von den entsprechenden Mitgliedern des Redaktionsausschusses vor der Vorlage des Entwurfs des Dokuments TGP/8/1 an den Rat überprüft werden.

7. Der CAJ vereinbarte auf seiner einundsechzigsten Tagung vom 25. März 2010 in Genf, daß das Dokument TGP/8/1 Draft 15, wie vom TC geändert, dem Rat auf seiner vierundvierzigsten ordentlichen Tagung vom 21. Oktober 2010 in Genf zur Annahme vorgelegt werden solle.

8. Der Rat nahm auf seiner vierundvierzigsten ordentlichen Tagung vom 21. Oktober 2010 das Dokument TGP/8/1 „Prüfungsanlage und Verfahren für die Prüfung der Unterscheidbarkeit, der Homogenität und der Beständigkeit“ aufgrund des Dokuments TGP/8/1 Draft 16 an.

## II. NEU ZU ERSTELLENDEN ABSCHNITTE FÜR EINE KÜNFTIGE ÜBERARBEITUNG VON TGP/8 (DOKUMENT TGP/8/2)

### Vom TC auf seiner fünfundvierzigsten Tagung vereinbarte neue Abschnitte

9. Für die folgenden Abschnitte, die in Dokument TC/45/14, Anlage I enthalten sind, wurde vom TC eine weitere Ausarbeitung für eine künftige Überarbeitung von Dokument TGP/8 vereinbart (vergleiche Absatz 5 dieses Dokuments).

*Teil I: DUS-Prüfungsanlage und Datenanalyse:*

2. *Zu erfassende Daten*
3. *Kontrolle der Variation infolge verschiedener Erfasser*
6. *Datenverarbeitung für die Prüfung der Unterscheidbarkeit und die Erstellung von Sortenbeschreibungen*

*Teil II Verfahren für die DUS-Prüfung*

- 3.5 *Statistische Verfahren für sehr kleine Probengrößen*
5. *DUS-Prüfung an Mischproben*
6. *Prüfung von Merkmalen anhand der Bildanalyse*
7. *Verfahren für die Datenverarbeitung für die Prüfung der Unterscheidbarkeit und die Erstellung von Sortenbeschreibungen*

10. Der Technische Ausschuß (TC) vereinbarte außerdem auf seiner fünfundvierzigsten Tagung, daß die Aufnahme folgender Angelegenheiten geprüft werden solle bei der künftigen Überarbeitung von TGP/8:

- a) Informationen über angemessene ackerbauliche Verfahren für die DUS Feldprüfungen (z. B. Bodenbeschaffenheit, Einheitlichkeit des Bodens usw.)
- b) Anleitung zur Datenanalyse für randomisierte Blindprüfungen.

(vergleiche Dokument TC/45/16 „Bericht“, Absatz 16)

### Vom TC auf seiner sechsendvierzigsten Tagung vereinbarte neue Abschnitte

11. Der TC vereinbarte auf seiner sechsendvierzigsten Tagung vom 22. bis 24. März 2010 in Genf, daß statistische Verfahren für visuell erfaßte Merkmale von der TWC untersucht werden sollen und für eine etwaige Aufnahme in eine Überarbeitung von Dokument TGP/8/1 geprüft werden sollen (vergleiche Dokument TC/46/15 „Bericht über die Entschließungen“, Absatz 14).

12. Der TC billigte auf seiner sechsendvierzigsten Tagung außerdem das Verfahren für die Überarbeitung von Dokument TGP/8/1 (Dokument TGP/8/2), wie in den Absätzen 13 und 14 von Dokument TC/46/5 dargelegt. Der TC vereinbarte, daß zusätzlich zu den in Dokument TC/46/5 enthaltenen Punkten (Absätze 9 und 10 dieses Dokuments), folgende Angelegenheiten bei der Überarbeitung von TGP/8 berücksichtigt werden sollten (vergleiche Dokument TC/46/15 „Bericht über die Entschließungen“, Absatz 20):

- a) Anleitung zu der Entwicklung von Sortenbeschreibungen mit Informationen aus:
- i) mehr als einer Wachstumsperiode an einem Standort, und
  - ii) mehr als einem Standort;

13. Der TC prüfte auf seiner sechsendvierzigsten Tagung vom 22. bis 24. März 2010 in Genf Dokument TC/46/14 „Prüfung der Homogenität anhand von Abweichern aufgrund von mehr als einer Probe oder Unterproben“ und ersuchte das Verbandsbüro, den Fragebogen den Vertretern der Verbandsmitglieder im TC zur Vervollständigung zu senden und ein Dokument mit einer Zusammenfassung der Antworten zur Prüfung auf der siebenundvierzigsten Tagung des TC zu erstellen. Der TC ersuchte ferner, daß das Dokument Angelegenheiten herausstellen solle, die in bezug auf die Überarbeitung von Dokument TGP/8 geprüft werden könnten (vergleiche Dokument TC/46/15 „Bericht über die Entschließungen“, Absätze 86 und 88).

14. Der Inhalt der neu zu erarbeitenden Abschnitte für eine künftige Überarbeitung von TGP/8 und die Bemerkungen zu deren Inhalt sind in den Anlagen zu diesem Dokument dargelegt.

#### Seminar über die DUS-Prüfung

15. Die UPOV veranstaltete vom 18. bis 20. März 2010 in Genf ein Seminar über die DUS-Prüfung („Seminar“). Die Schlußfolgerungen des Vorsitzenden des TC zusammen mit dem Verbandsbüro umfaßten folgendes:

“[...]

„Wenn in gewissen Abständen solche Seminare organisiert werden, können dadurch ein breiter Überblick und neue Entwicklungen ausgetauscht werden sowie Bereiche für etwaige zukünftige Anleitung ermittelt werden (z. B. Verfahren für die Datenverarbeitung für die Prüfung der Unterscheidbarkeit und die Erstellung von Sortenbeschreibungen, Klärung von „ähnlichen Sorten“, Status von Sortenbeschreibungen).

[...]”.

16. In bezug auf die Ermittlung von Bereichen für etwaige künftige Anleitung in Dokument TGP/8 könnte die Sitzung 7 des Seminars von besonderem Interesse sein, insbesondere in bezug auf den Neuen Abschnitt 13 - Verfahren für die Datenverarbeitung für die Prüfung der Unterscheidbarkeit und die Erstellung von Sortenbeschreibungen: (Verfasser: Sachverständige aus Deutschland, Finnland, Frankreich, Japan, Kenia und dem Vereinigten Königreich):

#### Sitzung 7: Erstellung von Sortenbeschreibungen und deren Nutzung für die Unterscheidbarkeit und die Verwaltung von Sortensammlungen

09.00 Einführung auf der Grundlage von Dokument TGP/9, „Prüfung der Unterscheidbarkeit“

- a) *Umwandlung der Erfassungen und Messungen in Noten für die Unterscheidbarkeit und für Sortenbeschreibungen*

*Moderation: Frau Beate Rücker (Leitung Abteilung Registerprüfung, Bundessortenamt (Deutschland))*

09.15	Erfahrungen in Deutschland
09.45	Erfahrungen in Japan
10.15	Erfahrungen in der Republik Korea
10.45	<i>Kaffeepause</i>
11.00	Erfahrungen im Vereinigten Königreich
11.30	Diskussion

12.00 *Mittagspause*

Sitzung 7: Erstellung von Sortenbeschreibungen und deren Nutzung für die Unterscheidbarkeit und die Verwaltung von Sortensammlungen (Fortsetzung)

b) *Nutzung der vom Züchter angegebenen Sortenbeschreibungen*

*Moderation: Herr Alejandro Barrientos Priego (Professor / Forscher, Abteilung für Phytotechnik, Freie Universität Chapingo (Mexiko))*

13.30	Erfahrungen in Argentinien
14.00	Erfahrungen in Australien
14.30	Erfahrungen in Kanada
15.00	Erfahrungen in Frankreich
15.30	Erfahrungen in den Vereinigten Staaten von Amerika
16.00	Diskussion

17. Kopien der auf dem Seminar für DUS-Prüfung präsentierten Referate sind verfügbar auf der UPOV-Website unter: <http://www.upov.int/d>

[http://www.upov.int/en/documents/dus\\_seminar/dus\\_seminar\\_index.html](http://www.upov.int/en/documents/dus_seminar/dus_seminar_index.html)  
[http://www.upov.int/en/documents/dus\\_seminar/dus\\_seminar\\_index.html](http://www.upov.int/en/documents/dus_seminar/dus_seminar_index.html)

Erörterungen der Ausarbeitung neuer Abschnitte für Dokument TGP/8 in den Technischen Arbeitsgruppen auf ihren Tagungen im Jahr 2010

18. Die TWP prüften auf ihren Tagungen im Jahre 2010 die Abschnitte zur weiteren Ausarbeitung für TGP/8 und vereinbarten in bezug auf die Ausarbeitung der in den Anlagen behandelten Punkte folgendes:

*ANLAGE I - TGP/8 TEIL I: DUS-PRÜFUNGSANLAGE UND DATENANALYSE  
 Neuer Abschnitt 2 - Zu erfassende Daten (Verfasser: Herr Uwe Meyer (Deutschland))*

TWA Nahm zur Kenntnis, daß Frau Beate Rücker (Deutschland) bereits an der Ausarbeitung dieses Abschnitts beteiligt sei.

Bei der Erörterung von Dokument TGP/7 „Erstellung von Prüfungsrichtlinien“, „Abschnitt vii) Anleitung für die Beobachtungsmethode“ zog die TWA den Schluß, daß der wesentliche Unterschied zwischen Szenario A und B in Beispiel 1 darin bestehe, daß in Szenario B die Erfassung durch Verweis auf die Beispielsorten erfolge und nicht der Aufzeichnung der Daten und empfahl, daß Dokument zu ändern, um dies deutlich zu machen. Es wurde außerdem vereinbart, daß die Anleitung den Empfehlungen in TGP/8 entsprechen sollte, insbesondere in Abschnitt „Zu erfassende Daten“, der für eine künftige Überarbeitung von TGP/8 - TEIL I zu erarbeiten ist (vergleiche Dokument TWA/39/27 Rev. „Revised Report“, Absätze 53 und 54).

- TWC Die TWC hielt es für angebracht, daß ein DUS-Sachverständiger ermittelt werden solle, der Herrn Meyer bei der Bearbeitung dieses Abschnitts unterstützen solle, um zu gewährleisten, daß er für DUS-Sachverständige verständlich sei.
- TWO Die TWO vereinbarte, daß Andrea Menne (Deutschland) an der Ausarbeitung dieses Abschnitts beteiligt sein solle.
- TWF Die TWF vereinbarte, daß Erik Schulte (Deutschland) an der Ausarbeitung dieses Abschnitts beteiligt sein solle.

*ANLAGE II - TGP/8 TEIL I: DUS-PRÜFUNGSANLAGE UND DATENANALYSE  
Neuer Abschnitt 3 - Kontrolle der Variation infolge verschiedener Erfasser (Verfasser:  
Herr Gerie van der Heijden (Niederlande))*

- TWA Herr Henk Bonthuis (Niederlande) in Zusammenarbeit mit Herrn Gerie van der Heijden (Niederlande). Frankreich beteiligt sich über die TWC-Sachverständigen.
- TWC Herr van der Heijden berichtete, daß er diesen Abschnitt mit Herrn Henk Bonthuis (Niederlande) erörtert habe und sie daran arbeiten werden, einen Entwurf zur Prüfung durch die TWP im Jahr 2011 zu erstellen.
- TWV Die TWV nahm zur Kenntnis, daß die Sachverständigen der TWV aus den Niederlanden mit Herrn Henk Bonthuis (Niederlande) zusammenarbeiten werden und Herr van der Heijden (Niederlande) an der Ausarbeitung dieses Abschnitts beteiligt werde. Sie nahm ferner zur Kenntnis, daß Frankreich über Sachverständige der TWC dazu einen Beitrag leisten werde.

*ANLAGE III –TGP/8 TEIL II: DUS-PRÜFUNGSANLAGE UND DATENANALYSE  
Neuer Abschnitt 6 - Verfahren für die Datenverarbeitung für die Prüfung der  
Unterscheidbarkeit und die Erstellung von Sortenbeschreibungen (Verfasser:  
Sachverständige aus Deutschland, Finnland, Frankreich, Japan, Kenia und dem  
Vereinigten Königreich)*

- TWA Mit Anlage XI zu kombinieren.
- TWC Die TWC prüfte das von Frau Sally Watson (Vereinigtes Königreich) und Herrn Sami Markkanen (Finnland) erstellte Dokument TWC/28/32 „Principles Lying Behind the Methods Described in TGP/8 Part II for Producing Variety Descriptions“ (Prinzipien, die den in TGP/8 Teil II beschriebenen Verfahren zur Erstellung von Sortenbeschreibungen zugrunde liegen)
- Die TWC vereinbarte, daß das Verbandsbüro den Abschnitt mit einem Verweis auf TGP/9 „Prüfung der Unterscheidbarkeit“ ausarbeiten solle sowie „Neuer Abschnitt 2 - Zu erfassende Daten (Verfasser: Herr Uwe Meyer (Deutschland)).“
- Die TWC nahm zur Kenntnis, daß dieser Abschnitt zu prüfen ist in Verbindung mit der Entwicklung des Neuen Abschnitts 13 von TEIL II von TGP/8 „Verfahren für die Datenverarbeitung für die Prüfung der Unterscheidbarkeit und die Erstellung von Sortenbeschreibungen: (Verfasser: Sachverständige aus Deutschland, Finnland, Frankreich, Japan, Kenia und dem Vereinigten Königreich)“



*ANLAGE IV - TGP/8 TEIL I: DUS-PRÜFUNGSANLAGE UND DATENANALYSE  
Neuer Abschnitt - Informationen über angemessene ackerbauliche Verfahren für die  
DUS-Feldprüfungen (Verfasser: Frau Anne Weitz (Europäische Union) mit Beteiligung  
von Argentinien und Frankreich)*

TWA Frau Anne Weitz (Europäische Union) übernimmt die Abfassung und Argentinien und Frankreich beteiligen sich.

TWC Die TWC nahm zur Kenntnis, daß Frau Anne Weitz (Europäische Union) auf der neununddreißigsten Tagung der TWA vom 24. bis 28. Mai 2010 in Osijek, Kroatien, angeboten habe, die Abfassung dieses Abschnitts zu übernehmen und Argentinien und Frankreich ihre Beteiligung angeboten haben.

TWV Die TWV nahm den Standardwortlaut in Kapitel 3.3 der Prüfungsrichtlinien zur Kenntnis: „Die Prüfungen sollten unter Bedingungen durchgeführt werden, die eine für die Ausprägung der maßgebenden Merkmale der Sorte und für die Durchführung der Prüfung zufriedenstellende Pflanzenentwicklung sicherstellen.“ Sie erachtete es für sehr schwierig für UPOV, Anleitung für angemessene ackerbauliche Verfahren zu erstellen und empfahl, daß der etwaige Inhalt eines solchen Abschnitts weiter geprüft werden sollte, bevor mit der Erstellung eines Abschnitts begonnen werde.

TWF Die TWF nahm den Standardwortlaut in Kapitel 3.3 der Prüfungsrichtlinien zur Kenntnis: „Die Prüfungen sollten unter Bedingungen durchgeführt werden, die eine für die Ausprägung der maßgebenden Merkmale der Sorte und für die Durchführung der Prüfung zufriedenstellende Pflanzenentwicklung sicherstellen.“ Die TWF stimmte der TWV zu, daß es sehr schwierig für UPOV sei, Anleitung für angemessene ackerbauliche Verfahren zu erstellen und empfahl, daß der etwaige Inhalt eines solchen Abschnitts weiter geprüft werden sollte, bevor mit der Erstellung eines Abschnitts begonnen werde. Sie merkte zum Beispiel an, daß Anleitung notwendig sei, um zahlreiche Anbaubedingungen (Feldprüfungen, Gewächshausprüfungen, usw.), verschiedene Vereinbarungen für die DUS-Prüfung sowie verschiedene Typen von Pflanzen/Arten (Landwirtschaftliche Arten, Obst, Zierpflanzen, Gemüse, Pilze, usw.) zu behandeln. Sie betrachtete es jedoch als zweckmäßig, die Angabe von Literatur für Aspekte wie Prüfungsanlage zu prüfen.

*ANLAGE V - TGP/8 TEIL II: VERFAHREN FÜR DIE DUS-PRÜFUNG  
Neuer Abschnitt nach COYU - Statistische Verfahren für sehr kleine Probengrößen  
(Verfasser: Herr Gerie van der Heijden (Niederlande))*

TWA Von der TWC auszuarbeiten.

TWC Die TWC vereinbarte, daß Herr Gerie van der Heijden (Niederlande) mit Herrn Chris Barnaby (Neuseeland) in Verbindung treten solle, um eine Klarstellung des Zwecks dieses Abschnitts und Beispiele einzuholen für Situationen, in denen Anleitung notwendig sei. Aufgrund dieser Erörterungen werde dem Wortlaut eine Einleitung hinzugefügt.

TWF Die TWF vereinbarte, daß einer der zu prüfenden Aspekte die Anleitung zur Probengröße sein werde, wenn mehrere Pflanzenteile aus einer Menge von Einzelpflanzen entnommen werden. Es sei deutlich zu machen, ob die Probengröße sich auf die Anzahl der Pflanzen oder die Anzahl der Pflanzenteile beziehe.

*ANLAGE VI - TGP/8 TEIL II: VERFAHREN FÜR DIE DUS-PRÜFUNG  
Neuer Abschnitt 11 - Prüfung an Mischproben : (Verfasser: Herr Kristian Kristensen  
(Dänemark))*

TWC Die TWC vereinbarte, daß Herr Kristian Kristensen eine Einleitung zu diesem Abschnitt erstellen sollte, in der die Gründe für Mischung der Proben und die Folgen von Mischung von Proben für die DUS-Prüfung erläutert werden.

*ANLAGE VII TGP/8 TEIL II: VERFAHREN FÜR DIE DUS-PRÜFUNG  
Neuer Abschnitt 12 - Prüfung von Merkmalen anhand der Bildanalyse (Verfasser:  
Herr Gerie van der Heijden (Niederlande))*

TWA Frankreich und das Vereinigte Königreich beteiligen sich.

TWC Die TWC erachtete es vor der Ausarbeitung dieses Abschnitts für zweckmäßig, die Informationen über die Anwendung der Bildanalyse durch Verbandsmitglieder zu überprüfen.

Verbandsmitglieder aus Australien, Dänemark, Deutschland, Finnland, Frankreich, den Niederlanden, Polen, der Tschechischen Republik und dem Vereinigten Königreich werden auf der neunundzwanzigsten Tagung der TWC ein 15-minütiges Referat über ihre Anwendung der Bildanalyse halten.

Die TWC nahm zur Kenntnis, daß diese Referate ebenfalls in bezug auf austauschbare Software geprüft werden könnten.

TWV Die TWV vereinbarte, daß die potentiellen Vorteile der Bildanalyse mit Anlage II, Neuer Abschnitt 3 - Kontrolle der Variation infolge verschiedener Erfasser, verbunden werden sollten.

Die TWV nahm zur Kenntnis, daß die TWC vereinbart habe, daß es vor der Ausarbeitung dieses Abschnitts zweckmäßig sei, die Informationen über die Anwendung der Bildanalyse zu überprüfen und daß Verbandsmitglieder aus Australien, Dänemark, Deutschland, Finnland, Frankreich, den Niederlanden, Polen, der Tschechischen Republik und dem Vereinigten Königreich auf der neunundzwanzigsten Tagung der TWC ein 15-minütiges Referat über ihre Anwendung der Bildanalyse halten werden. Die TWV wurde unterrichtet, daß die Tagung der TWC über Webcast übertragen werde, damit interessierte Sachverständige die Beiträge verfolgen können.

TWF Die TWF nahm die Informationen des Sachverständigen aus Australien zur Kenntnis, daß die von Australien für den Abschnitt angegebenen Beispiele auch Beispiele für Bildanalyse bei Obst enthalten werden.

*ANLAGE VIII - TGP/8 TEIL II: VERFAHREN FÜR DIE DUS-PRÜFUNG  
Neuer Abschnitt 13 - Verfahren für die Datenverarbeitung für die Prüfung der Unterscheidbarkeit und die Erstellung von Sortenbeschreibungen (Verfasser:  
Sachverständige aus Deutschland, Finnland, Frankreich, Japan, Kenia und dem Vereinigten Königreich)*

TWA Vom Verbandsbüro zu koordinieren und alle auf dem Seminar über die DUS-Prüfung dargelegten einschlägigen Informationen aufzunehmen.

- TWC (vergleiche ferner die Bemerkungen zu Anlage III)  
 Die TWC prüfte Anlage XI in Verbindung mit den folgenden Dokumenten:  
TWC/28/24 “Handling measured quantitative characteristics for vegetable and herbage crops tested in the United Kingdom”, erstellt von Frau Sally Watson (Vereinigtes Königreich)  
 Die TWC nahm zur Kenntnis, daß Absatz 7 geändert werden sollte, um zu lauten: “For vegetable crops excluding potato method (b) is used to divide the range of expression into states and notes, and for herbage crops method (a) is used.”  
 Der TC vereinbarte, daß die Noten in 1-5 statt 1,3,5,7,9 geändert werden sollten.  
 Herr Markkanen (Finnland) erläuterte, daß das in Finnland eingesetzte System auf denselben Grundlagen zu beruhen scheine wie die des DUSTNT-Softwarepakets und erläuterte, daß Finnland, sollte dies der Fall sein, prüfen werde, das DUSTNT-Softwarepaket einzusetzen und sein Verfahren aus der Sammlung von Verfahren in Anlage XI entfernen werde.  
TWC/28/32 “Principles Lying Behind the Methods Described in TGP/8 Part II for Producing Variety Descriptions”, von Frau Sally Watson (Vereinigtes Königreich) und Herrn Sami Markkanen (Finnland) erstellt  
TWC/28/33 “Use of linear regression for the description of herbage crops tested in France”, erstellt von Herrn Vincent Gensollen (Frankreich)  
 Die TWC vereinbarte als nächsten Schritt bei der Erstellung eines Abschnitts für TGP/8, daß die TWC einen 10-minütigen Überblick über alle in Dokument TWC/28/20, Anlage XI dargelegten Verfahren erhalten werde sowie auf dem Seminar über DUS im März 2010 in Genf Referate von Argentinien, Deutschland, Japan und der Republik Korea hören werde. Die TWC werde dann die Ähnlichkeiten und Unterschiede dieser Vorschläge analysieren und sich darum bemühen, Verfahren zu entwickeln, die als Modell dienen könnten und Verbandsmitgliedern in Form von austauschbarer Software zugänglich sein werden. In einem etwaigen künftigen Schritt könnte die TWC prüfen, ob es zweckmäßig sei, die Ergebnisse aus gemeinsamen Datenserien zu vergleichen.

*ANLAGE IX - TGP/8 TEIL II: VERFAHREN FÜR DIE DUS-PRÜFUNG*

*Neuer Abschnitt - Anleitung zur Datenanalyse von randomisierten Blindprüfungen (Verfasser: Frankreich und Israel geben Beispiele an)*

- TWA Frankreich gibt ein Beispiel an.
- TWC Die TWC nahm zur Kenntnis, daß die TWA auf ihrer neununddreißigsten Tagung vereinbart habe, daß Frankreich ein Beispiel angeben werde.
- TWV Die TWV vereinbarte, daß deutlich gemacht werden sollte, daß die Anleitung sich nicht auf „Datenanalyse“ von randomisierten Blindprüfungen beschränken sollte.
- TWF Die TWF vereinbarte, daß Israel ein Beispiel angeben solle.

*ANLAGE X - TGP/8 TEIL II: VERFAHREN FÜR DIE DUS-PRÜFUNG*

*Neuer Abschnitt - statistische Verfahren für visuell erfaßte Merkmale (Verfasser: Experten aus Dänemark, Frankreich und dem Vereinigten Königreich)*

- TWA Von der TWC auszuarbeiten.

TWC Die TWC nahm zur Kenntnis, daß diese Angelegenheit unter Tagesordnungspunkt 12 „Statistical methods for visually observed characteristics“ erörtert werde (Dokument TWC/28/29).

Die TWC prüfte das von Herrn Kristian Kristensen (Dänemark) dargelegte Dokument TWC/28/29 aufgrund eines Referats, von dem eine Abschrift in Dokument TWC/28/29 Add wiedergegeben ist. Es wurde empfohlen, daß es zweckmäßig sein könne, die Analyse mit anderen Programmen als SAS durchzuführen. Ein Sachverständiger aus Frankreich erklärte sich bereit zu überprüfen, ob es jemandem in seinem Land möglich sei, die Methode in R. zu übersetzen. Ein Sachverständiger aus dem Vereinigten Königreich bot an, dies für das Programm GenStat vorzunehmen. Die TWC vereinbarte, ein gesondertes Kapitel für Ordinal- oder Nominaldaten (einschließlich binomiale Daten) für die folgende Fassung des Dokuments auszuarbeiten (vergleiche Dokument TWC/28/36, Absätze 54 bis 56).

#### *ANLAGE XI - TGP/8 TEIL II: VERFAHREN FÜR DIE DUS-PRÜFUNG*

*Neuer Abschnitt - Anleitung zu der Entwicklung von Sortenbeschreibungen (Verfasser zu bestimmen)*

TWA Mit Anlage XI zu kombinieren.

TWC Die TWC vereinbarte, daß Herr van der Heijden (Niederlande) prüfen werde, ob es möglich sei, einen Bericht über die Entwicklungen in den Niederlanden vorzulegen.

19. Der Inhalt der neu zu erarbeitenden Abschnitte für eine künftige Überarbeitung von TGP/8 und die Bemerkungen zu deren Inhalt sind in den Anlagen I bis XI dieses Dokuments dargelegt, einschließlich jeweilige Verfasser sowie gegebenenfalls Anmerkungen.

### III. ÜBERARBEITUNG BESTEHENDER ABSCHNITTE VON DOKUMENT TGP/8/1 ZUR AUSARBEITUNG FÜR EINE KÜNFTIGE ÜBERARBEITUNG (DOKUMENT TGP/8/2)

#### Überarbeitung der vom TC auf seiner sechsundvierzigsten Tagung vereinbarten Abschnitte von Dokument TGP/8/1

20. Der TC billigte auf seiner sechsundvierzigsten Tagung das Verfahren für die Überarbeitung von Dokument TGP/8/1 (Dokument TGP/8/2), wie in den Absätzen 13 und 14 von Dokument TC/46/5 dargelegt. Der TC vereinbarte, daß zusätzlich zu den in Dokument TC/46/5 enthaltenen Punkten (Absätze 9 und 10 dieses Dokuments), folgende Angelegenheiten bei der Überarbeitung von TGP/8 berücksichtigt werden sollten (vergleiche Dokument TC/46/15 „Bericht über die Entschließungen“, Absatz 20):

- a) Überprüfung der Empfehlungen der Mindestanzahl Freiheitsgrade für COYD;
- b) Aufnahme einer Empfehlung einer Mindestanzahl Freiheitsgrade für das 2x1% Verfahren, und

- c) Aufnahme einer Empfehlung einer Mindestanzahl vergleichbarer Sorten, die in die Versuche nach dem Verfahren der relativen Varianz zur Prüfung der Homogenität aufgenommen werden sollten.

Erörterungen der Überarbeitung bestehender Abschnitte für Dokument TGP/8 in den Technischen Arbeitsgruppen auf ihren Tagungen im Jahr 2010

*Allgemein*

21. Die TWC nahm zur Kenntnis, daß in der Folge der achtundzwanzigsten Tagung der TWC einige Änderungen an bestimmten Abschnitten in der Fassung TGP/8/1 vorgenommen wurden, die dem Rat zur Annahme vorgelegt wurden und vereinbarte, daß die TWC diese Abschnitte auf ihrer neunundzwanzigsten Tagung prüfen sollte.

*TGP/8/1 Draft 15 Teil II, 1. Die GAIA-Methodik*

22. Die TWA nahm zur Kenntnis, daß der Wortlaut von TGP/8/1 „Prüfungsanlage und Verfahren für die Prüfung der Unterscheidbarkeit, der Homogenität und der Beständigkeit“, Teil II.1. Die GAIA-Methodik, Abschnitt 1.3.1.1 geändert werden sollte, um deutlich zu machen, daß es eine Annahme ist, daß die Länge der Rispe als Merkmal verwendet wird (vergleiche Dokument TWA/39/27 Rev. „Revised Report“, Absatz 70).

*TGP/8/1 Draft 15: Teil II: 5: Der Chi-Quadrat-Test nach Pearson mit Kontingenztabellen*

23. Der TC vereinbarte, daß in Dokument TGP/8/1 Draft 15: Teil II: 5: Der Abschnitt Chi-Quadrat-Test nach Pearson mit Kontingenztabellen 5.5 (4) geändert werden sollte, um zu lauten:

„4) Für die Bestimmung des Chi-Quadrat-Tests mit nur einem Freiheitsgrad ist stets die Yates-Bereinigung anzuwenden.“

(vergleiche Dokument TWC/28/36 „Report“, Absatz 74).

24. Die TWP prüften auf ihren Tagungen im Jahre 2010 die Abschnitte zur weiteren Ausarbeitung für TGP/8 und vereinbarten in bezug auf die Ausarbeitung der in den Anlagen behandelten Punkte folgendes:

*ANLAGE XII TGP/8 TEIL II: VERFAHREN FÜR DIE DUS-PRÜFUNG*

*Abschnitt 4 - 2x1%-Verfahren - Mindestanzahl Freiheitsgrade für das 2x1%Verfahren (Verfasser zu bestimmen)*

TWA Von der TWC auszuarbeiten.

TWC Die TWC vereinbarte, daß Frau Sally Watson (Vereinigtes Königreich) eine allgemeine Erläuterung des Grundprinzips der Angabe „von mindestens 20 und vorzugsweise mindestens 20 Freiheitsgraden“ sowohl für das 2x1 %-Verfahren und COYD verfassen sollte.

TWF Die TWF vereinbarte, daß einer der zu prüfenden Aspekte die Anleitung sei zu der Probengröße, wenn mehrere Pflanzenteile einer Menge Einzelpflanzen entnommen werden: klarzustellen, ob sich die Probengröße auf die Anzahl Pflanzen oder die Anzahl Pflanzenteile bezieht.

*ANLAGE XIII - TGP/8 TEIL II: VERFAHREN FÜR DIE DUS-PRÜFUNG*

*Abschnitt 9 - Das kombinierte Homogenitätskriterium über mehrere Jahre (COYU)*

*Mindestanzahl Freiheitsgrade für COYU (Verfasser zu bestimmen)*

TWA Die TWA vereinbarte, daß die TWC die Daten, die ursprünglich für COY dargestellt wurden, bei der Prüfung der geeigneten Freiheitsgrade überprüfen sollten.

TWC Die TWC vereinbarte, daß Frau Sally Watson (Vereinigtes Königreich) eine allgemeine Erläuterung des Grundprinzips der Angabe „von mindestens 10 Freiheitsgraden und vorzugsweise mindestens 20 Freiheitsgraden“ sowohl für das 2x1 %-Verfahren und COYD verfassen solle. Die TWC vereinbarte, daß der Verweis auf „COYU“ in „COYD“ geändert werden solle.

*ANLAGE XIV - TGP/8 TEIL II: VERFAHREN FÜR DIE DUS-PRÜFUNG*

*Abschnitt 10 - Mindestanzahl vergleichbarer Sorten für das Verfahren der relativen Varianz (Verfasser: Herr Nik Hulse (Australien))*

TWC Die TWC nahm zur Kenntnis, daß ein Vorschlag zur Erörterung durch die TWP im Jahr 2011 erstellt werde.

25. Der Inhalt der neu zu erarbeitenden Abschnitte für eine künftige Überarbeitung von TGP/8 und die Bemerkungen zu deren Inhalt sind in den Anlagen XII to XIV zu diesem Dokument dargelegt einschließlich jeweilige Verfasser sowie gegebenenfalls Anmerkungen.

#### IV. ARBEITSPLAN FÜR DIE AUSARBEITUNG DER VERSCHIEDENEN ABSCHNITTE VON TGP/8/2

26. In Folge der Erörterungen in den TWP während ihrer Tagungen im Jahr 2010 und mit den vorgeschlagenen Verfassern der Abschnitte gibt Anlage XV den Arbeitsplan für die Ausarbeitung von TGP/8 wieder. Der TC könnte erwägen zu ermitteln, welchen Abschnitten die höchste Priorität eingeräumt werden sollte, damit eine Überarbeitung des Dokuments TGP/8 (Dokument TGP/8/2) im Jahr 2013 angenommen werden könnte.

*21. Der Technische Ausschuß (TC) wird ersucht,*

*a) die Bemerkungen der TWP auf ihren Tagungen im Jahr 2010 in bezug auf die Überarbeitung von TGP/8 zur Kenntnis zu nehmen, wie in den Absätzen 18 und 24 dargelegt;*

*b) die in den Absätzen 21 bis 23 dargelegten neuen Vorschläge für Änderungen an bestehenden Abschnitten von Dokument TGP/8 zu prüfen,*

*c) den Arbeitsplan für die Erarbeitung von TGP/8 zu billigen/prüfen, wie in Anlage XV dieses Dokuments dargelegt.*

[Anlagen folgen]

**TGP/8 PART I: DUS TRIAL DESIGN AND DATA ANALYSIS**

*New Section 2 - Data to be recorded (Drafter: Mr. Uwe Meyer (Germany))*

*Notes*

27. The TWC at its twenty-sixth session, held in Jeju, Republic of Korea, from September 2 to 5, 2008, agreed to revise and restructure the section starting from the perspective of characteristics as viewed by DUS experts e.g. using Tables 2 and 3 and to include examples for clarification.

28. The TWC at its twenty-seventh session, held in Alexandria, Virginia, United States of America, from June 16 to 19, 2009, agreed to provide an introduction to the section from the perspective of a DUS crop expert, i.e. to start from the type of expression of characteristics, based on the sequence in the flow diagram in document TGP/8/1 draft 13, Part I, Section 3.3.1. as amended.

[DRAFT TEXT FOLLOWS]



## 2. DATA TO BE RECORDED

### 2.1 Introduction

Document TGP/9 Examining Distinctness, sections 4.4 and 4.5 provide the following guidance on the type of observation for distinctness in respect to the type of characteristic and the method of propagation of the variety:

#### **“4.4 Recommendations in the UPOV Test Guidelines**

“The indications used in UPOV Test Guidelines for the method of observation and the type of record for the examination of distinctness, are as follows:

##### “Method of observation

“M: to be measured (an objective observation against a calibrated, linear scale e.g. using a ruler, weighing scales, colorimeter, dates, counts, etc.);

“V: to be observed visually (includes observations where the expert uses reference points (e.g. diagrams, example varieties, side-by-side comparison) or non-linear charts (e.g. color charts). “Visual” observation refers to the sensory observations of the expert and, therefore, also includes smell, taste and touch.

##### “Type of record(s)

“G: single record for a variety, or a group of plants or parts of plants;

“S: records for a number of single, individual plants or parts of plants

“For the purposes of distinctness, observations may be recorded as a single record for a group of plants or parts of plants (G), or may be recorded as records for a number of single, individual plants or parts of plants (S). In most cases, “G” provides a single record per variety and it is not possible or necessary to apply statistical methods in a plant-by-plant analysis for the assessment of distinctness.

#### **“4.5 Summary**

“The following table summarizes the common method of observation and type of record for the assessment of distinctness, although there may be exceptions:

Method of propagation of the variety	Type of expression of characteristic		
	QL	PQ	QN
Vegetatively propagated	VG	VG	VG/MG/MS
Self-pollinated	VG	VG	VG/MG/MS
Cross-pollinated	VG/(VS*)	VG/(VS*)	VS/VG/MS/MG
Hybrids	VG/(VS*)	VG/(VS*)	**

\* Records of individual plants only necessary if segregation is to be recorded.

\*\* To be considered according to the type of hybrid.”

The following sections consider the data in relation to the type of record and type of trial design:

## 2.2 Side-by-side visual comparison<sup>i</sup>

2.2.1 When distinctness is assessed by side-by-side visual comparison, uniformity is assessed by off-types. In these cases, the trial design is a single plot, there is a single record per variety, which is obtained from visual observations of a group of plants or part of plants (VG), which provide notes (see sections 1.6.1.6 and 1.6.2) [*cross ref.*].

## 2.3 Notes/Single variety records<sup>ii</sup>

2.3.1 When distinctness is assessed by notes/single variety records, uniformity is assessed by off-types. In these cases, the trial design consists of single plots<sup>iii</sup>. There is a single record per variety which is obtained from visual observation of a group of plants or part of plants (VG), providing a note, or a measurement of a group of plants or parts of plants (MG) (see sections 1.6.1.6 and 1.6.2) [*cross ref.*].

## 2.4 Variety mean/statistical analysis of records of group of plants [variety mean statistical analysis of records of group data]<sup>iv</sup>

2.4.1 In general, when distinctness is assessed, for at least some characteristics, by a variety mean or by statistical analysis of groups of plants, uniformity is assessed by off-types. In these cases, the trial design is replicate plots (see sections 1.6.1.7 and 1.6.3.2) [*cross ref.*].

2.4.2 Records from visual observation of a group of plants or part of plants provide notes which belong to qualitative scale data. It is important to note that, in general, it is not possible to calculate means with qualitative scale data (see section 2.5.4.2) [*cross ref.*].

## 2.5 Statistical analysis of individual plant data

### 2.5.1 Introduction

2.5.1.1 When distinctness is assessed, for at least some characteristics, by statistical analysis of individual plant data, uniformity is assessed by standard deviation for relevant characteristics.

2.5.1.2 In order to understand how statistical analysis can be appropriate to trial data it is necessary to answer the following questions:

1. What is a characteristic?
2. What is a process level?
3. What is a scale level of a characteristic?
4. What is the influence of the scale level on the :
  - planning of a trial,
  - recording of data,
  - determination of distinctness and uniformity and
  - description of varieties.
  -

### 2.5.2 Different levels to look at a characteristic

## 2.5.2.1 Introduction

2.5.2.1.1 Characteristics can be considered in different levels of process (Table 1). The characteristics as expressed in the trial (type of expression) are considered as process level 1. The data taken from the trial for the assessment of distinctness, uniformity and stability are defined as process level 2. These data are transformed into states of expression for the purpose of variety description. The variety description is process level 3.

*Table 1: Definition of different process levels to consider characteristics*

Process level	Description of the process level
1	characteristics as expressed in trial
2	data for evaluation of characteristics
3	variety description

From the statistical point of view, the information level decreases from process level 1 to 3. Statistical analysis is only applied in level 2.

2.5.2.1.2 Sometimes for crop experts it seems that there is no need to distinguish between different process levels. The process level 1, 2 and 3 could be identical. However, in general, this is not the case.

## 2.5.2.2 Understanding the need for process levels

2.5.2.2.1 The crop expert may know from UPOV Test Guidelines or his own experience that, for example, ‘Length of plant’ is a good characteristic for the examination of DUS. There are varieties which have longer plants than other varieties. Another characteristic could be ‘Variegation of leaf blade’. For some varieties, variegation is present and for others not. The crop expert has now two characteristics and he knows that ‘Plant length’ is a quantitative characteristic and ‘Variegation of leaf blade’ is a qualitative characteristic (definitions: see Part I: section 2.5.3.2 to 2.5.3.4 [*cross ref.*] below). This stage of work can be described as **process level 1**.

2.5.2.2.2 The crop expert then has to plan the trial and to decide on the type of observation for the characteristics. For characteristic ‘Variegation of leaf blade’, the decision is clear. There are two possible expressions: ‘present’ or ‘absent’. The decision for characteristic ‘Plant length’ is not specific and depends on expected differences between the varieties and on the variation within the varieties. In many cases, the crop expert will decide to measure a number of plants (in cm) and to use special statistical procedures to examine distinctness and uniformity. But it could also be possible to assess the characteristic ‘Plant length’ visually by using expressions like ‘short’, ‘medium’ and ‘long’, if differences between varieties are large enough (for distinctness) and the variation within varieties is very small or absent in this characteristic. The continuous variation of a characteristic is assigned to appropriate states of expression which are recorded by notes (see document TGP/9, section 4)[*cross ref.*]. The crucial element in this stage of work is the recording of data for further evaluations. It is described as **process level 2**.

2.5.2.2.3 At the end of the DUS test, the crop expert has to establish a description of the varieties using notes from 1 to 9 or parts of them. This phase can be described as **process level 3**. For ‘Variegation of leaf blade’ the crop expert can take the same states of expression (notes) he recorded in process level 2 and the three process levels appear to be the same. In

cases where the crop expert decided to assess 'Plant length' visually, he can take the same states of expression (notes) he recorded in process level 2 and there is no obvious difference between process level 2 and 3. If the characteristic 'Plant length' is measured in cm, it is necessary to assign intervals of measurements to states of expressions like 'short', 'medium' and 'long' to establish a variety description. In this case, for statistical procedures, it is important to be clearly aware of the relevant level and to understand the differences between characteristics as expressed in the trial, data for evaluation of characteristics and the variety description. This is absolutely necessary for choosing the most appropriate statistical procedures in cooperation with statisticians or by the crop expert.

### 2.5.3 Types of expression of characteristics

2.5.3.1 Characteristics can be classified according to their types of expression. The consideration of the type of expression of characteristics corresponds to process level 1. The following types of expression of characteristics are defined in the General Introduction to the Examination of Distinctness, Uniformity and Stability and the Development of Harmonized Descriptions of New Varieties of Plants, (document TG/1/3, the "General Introduction", Chapter 4.4):

2.5.3.2 Qualitative characteristics are those that are expressed in discontinuous states (e.g. sex of plant: dioecious female (1), dioecious male (2), monoecious unisexual (3), monoecious hermaphrodite (4)). These states are self-explanatory and independently meaningful. All states are necessary to describe the full range of the characteristic, and every form of expression can be described by a single state. The order of states is not important. As a rule, the characteristics are not influenced by environment.

2.5.3.3 Quantitative characteristics are those where the expression covers the full range of variation from one extreme to the other. The expression can be recorded on a one-dimensional, continuous or discrete, linear scale. The range of expressions is divided into a number of states for the purpose of description (e.g. length of stem: very short (1), short (3), medium (5), long (7), very long (9)). The division seeks to provide, as far as practical, an even distribution across the scale. The Test Guidelines do not specify the difference needed for distinctness. The states of expression should, however, be meaningful for DUS assessment.

2.5.3.4 In the case of pseudo-qualitative characteristics the range of expression is at least partly continuous, but varies in more than one dimension (e.g. shape: ovate (1), elliptic (2), circular (3), obovate (4)) and cannot be adequately described by just defining two ends of a linear range. In a similar way to qualitative (discontinuous) characteristics – hence the term "pseudo-qualitative" – each individual state of expression needs to be identified to adequately describe the range of the characteristic.

### 2.5.4 Types of scales of data

The possibility to use specific procedures for the assessment of distinctness, uniformity and stability depends on the scale level of the data which are recorded for a characteristic. The scale level of data depends on the type of expression of the characteristic and on the way of recording this expression. The type of scale may be quantitative or qualitative.

## 2.5.4.1 Quantitatively scaled data (metric or ordinal scaled data)

### 2.5.4.1.1 Introduction

2.5.4.1.1.1 Quantitatively scaled data are all data which are recorded by measuring or counting. Weighing is a special form of measuring. Quantitatively scaled data can have a continuous or a discrete distribution. Continuous data result from measurements. They can take every value out of the defined range. Discrete quantitative data result from counting.

#### Examples

Quantitatively scaled data	Example	Example number
- continuous	Plant length in cm.	1
- discrete	Number of stamens	2

For description of the states of expression, see Table 6.

2.5.4.1.1.2 The continuous quantitatively scaled data for the characteristic “Plant length” are measured on a continuous scale with defined units of assessment. A change of unit of measurement e.g. from cm into mm is only a question of precision and not a change of type of scale.

2.5.4.1.1.3 The discrete quantitatively scaled data of the characteristic “Number of stamens” are assessed by counting (1, 2, 3, 4, and so on). The distances between the neighboring units of assessment are constant and for this example equal to 1. There are no real values between two neighboring units but it is possible to compute an average which falls between those units.

2.5.4.1.1.4 In biometrical terminology, quantitative scales are referred to as metric scales or cardinal scales. Quantitative scales can be subdivided into ratio scales and interval scales.

### 2.5.4.1.2 Ratio scale

2.5.4.1.2.1 A ratio scale is a quantitative scale with a defined absolute zero point. There is always a constant non-zero distance between two adjacent expressions. Ratio scaled data may be continuous or discrete.

#### *The absolute zero point:*

2.5.4.1.2.2 The definition of an absolute zero point makes it possible to define meaningful ratios. This is a requirement for the construction of index numbers (e.g. the ratio of length to width). An index is the combination of at least two characteristics. In the General Introduction, this is referred to as a combined characteristic (see document TG/1/3, section 4.6.3).

2.5.4.1.2.3 It is also possible to calculate ratios between the expression of different varieties. For example, in the characteristic ‘Plant length’ assessed in cm, there is a lower limit for the expression which is ‘0 cm’ (zero). It is possible to calculate the ratio of length of plant of variety ‘A’ to length of plant of variety ‘B’ by division:

[TWC Chairperson: To review if this paragraph is relevant for DUS testing]

Length of plant of variety 'A' = 80 cm  
Length of plant of variety 'B' = 40 cm  
Ratio = Length of plant of variety 'A' / Length of plant of variety 'B'  
= 80 cm / 40 cm  
= 2.

2.5.4.1.2.4 So it is possible in this example to state that plant 'A' is double the length of plant 'B'. The existence of an absolute zero point ensures an unambiguous ratio.

2.5.4.1.2.5 The ratio scale is the highest classification of the scales (Table 2). That means that ratio scaled data include the highest information about the characteristic and it is possible to use many statistical procedures (section 2.5.7 [cross ref.]).

2.5.4.1.2.6 The examples 1 and 2 (Table 6) are examples for characteristics with ratio scaled data.

#### 2.5.4.1.3 Interval scale

2.5.4.1.3.1 An Interval scale is a quantitative scale without a defined absolute zero point. There is always a constant non-zero distance between two adjacent expressions. Interval scaled data may be distributed continuously or discretely.

2.5.4.1.3.2 An example for a discrete interval scaled characteristic is 'Time of beginning of flowering' measured as date which is given as example 6 in Table 6. This characteristic is defined as the number of days from April 1. The definition is useful but arbitrary and April 1 is not a natural limit. It would also be possible to define the characteristic as the number of days from January 1.

2.5.4.1.3.3 It is not possible to calculate a meaningful ratio between two varieties which should be illustrated with the following example:

Variety 'A' begins to flower on May 30 and variety 'B' on April 30

Case I) Number of days from April 1 of variety 'A' = 60  
Number of days from April 1 of variety 'B' = 30

$$\text{Ratio}_I = \frac{\text{Number of days from April 1 of variety 'A' } 60 \text{ days}}{\text{Number of days from April 1 of variety 'B' } 30 \text{ days}} = \frac{60}{30} = 2$$

Case II) Number of days from January 1 of variety 'A' = 150  
Number of days from January 1 of variety 'B' = 120

$$\text{Ratio}_{II} = \frac{\text{Number of days from January 1 of variety 'A' } 150 \text{ days}}{\text{Number of days from January 1 of variety 'B' } 120 \text{ days}} = \frac{150}{120} = 1.25$$

$$\text{Ratio}_I = 2 > 1.25 = \text{Ratio}_{II}$$

2.5.4.1.3.4 It is impossible to state that the time of flowering of variety ‘A’ is twice that of variety ‘B’. The ratio depends on the choice of the zero point of the scale. This kind of scale is defined as an “Interval scale”: a quantitative scale without a defined absolute zero point.

2.5.4.1.3.5 The interval scale is lower classified than the ratio scale (Table 2). Fewer statistical procedures can be used with interval scaled data than with ratio scaled data (see Part I: section 4.5.7 [*cross ref.*]). The interval scale is theoretically the minimum scale level to calculate arithmetic mean values.

## 2.5.4.2 Qualitatively scaled data

Qualitatively scaled data are data which can be arranged in different discrete qualitative categories. Usually they result from visual assessment. Subgroups of qualitative scales are ordinal and nominal scales.

### 2.5.4.2.1 Ordinal scale

2.5.4.2.1.1 Ordinally scaled data are qualitative data of which discrete categories can be arranged in an ascending or descending order. They result from visually assessed (notes) quantitative characteristics.

Example:

Qualitative data	Example	Example number
- ordinal	Intensity of anthocyanin	3

For description of the states of expressions, see Table 6.

2.5.4.2.1.2 An ordinal scale consists of numbers which correspond to the states of expression of the characteristic (notes). The expressions vary from one extreme to the other and thus they have a clear logical order. It is not possible to change this order, but it is not important which numbers are used to denote the categories. In some cases ordinal data may reach the level of discrete interval scaled data or of discrete ratio scaled data (section 4.5.6 [*cross ref.*]).

2.5.4.2.1.3 The distances between the discrete categories of an ordinal scale are not exactly known and not necessarily equal. Therefore, an ordinal scale does not fulfil the condition to calculate arithmetic mean values, which is the equality of intervals throughout the scale.

2.5.4.2.1.4 The ordinal scale is lower classified than the interval scale (Table 2). Less statistical procedures can be used for ordinal scale than for each of the higher classified scale data (see Part I: section 4.5.7 [*cross ref.*]).

### 2.5.4.2.2 Nominal scale

2.5.4.2.2.1 Nominal scaled qualitative data are qualitative data without any logical order of the discrete categories. They result from visually assessed (notes) pseudo-qualitative and qualitative characteristics.

Examples:

Qualitative data	Example	Example number
- nominal	Sex of plant	4
- nominal with two states	Leaf blade: variegation	5

For description of the states of expressions, see Table 6.

2.5.4.2.2.2 A nominal scale consists of numbers which correspond to the states of expression of the characteristic, which are referred to in the Test Guidelines as notes. Although numbers are used for designation there is no inevitable order for the expressions and so it is possible to arrange them in any order.

2.5.4.2.2.3 Characteristics with only two categories (dichotomous characteristic) are a special form of nominal scales.

2.5.4.2.2.4 The nominal scale is the lowest classification of the scales (Table 2). Few statistical procedures are applicable for evaluations (section 4.5.7 [cross ref.] ).

2.5.4.2.2.5 The different types of scales are summarized in the following table.

Table 2: *Types of scales and scale levels*

[TWC Chairperson: To modify the table for consistency with the subsequent paragraphs]

Type of scale		Description	Distribution	Data recording	Scale Level
quantitative data (measured or counted)	ratio	constant distances with absolute zero point	Continuous	Absolute Measurements	High
			Discrete	Counting	
	interval	constant distances without absolute zero point	Continuous	Relative measurements	↑
			Discrete	Date	
qualitative data (visually observed QN)	ordinal	Ordered expressions with varying distances	Discrete	Visually assessed notes	↑
qualitative data (visually observed notes without logic order from PQ or QL)	nominal	No order, no distances	Discrete	Visually assessed notes	Low

2.5.4.2.2.6 From the statistical point of view a characteristic is only considered at the level of data which has been recorded, whether for analysis or for describing the expression of the characteristic. Therefore, characteristics with quantitative data are denoted as quantitative



characteristics and characteristics with ordinal and nominal scaled data as qualitative characteristics.

#### 2.5.5 Scale levels for variety description

The description of varieties is based on the states of expression (notes) which are given in the Test Guidelines for the specific crop. In the case of visual assessment, the notes from the Test Guidelines are usually used for recording the characteristic as well as for the assessment of DUS. The notes are distributed on a nominal or ordinal scale (see Part I: section 4.5.4.2 [*cross ref.*]). For measured or counted characteristics, DUS assessment is based on the recorded values and the recorded values are transformed into states of expression only for the purpose of variety description.

#### 2.5.6 Relation between types of expression of characteristics and scale levels of data

2.5.6.1 Records taken for the assessment of qualitative characteristics are distributed on a nominal scale, for example “Sex of plant”, “Leaf blade: variegation” (Table 6, examples 4 and 5).

2.5.6.2 For quantitative characteristics the scale level of data depends on the method of assessment. They can be recorded on a quantitative (when measured) or ordinal (when visually observed) scale. For example, “Length of plant” can be recorded by measurements resulting in ratio scaled continuous quantitative data. However, visual assessment on a 1 to 9 scale may also be appropriate. In this case, the recorded data are qualitatively scaled (ordinal scale) because the size of intervals between the midpoints of categories is not exactly the same.

*Remark:* In some cases visually assessed data on quantitative characteristics may be handled as measurements. The possibility to apply statistical methods for quantitative data depends on the precision of the assessment and the robustness of the statistical procedures. In the case of very precise visually assessed quantitative characteristics the usually ordinal data may reach the level of discrete interval scaled data or of discrete ratio scaled data.

2.5.6.3 A pseudo-qualitative type of characteristic is one in which the expression varies in more than one dimension. The different dimensions are combined in one scale. At least one dimension is quantitatively expressed. The other dimensions may be qualitatively expressed or quantitatively expressed. The scale as a whole has to be considered as a nominal scale (e.g. “Shape”, “Flower color”; Table 6, examples 7 and 8).

2.5.6.4 In the case of using the off-type procedure for the assessment of uniformity the recorded data are nominally scaled. The records fall into two qualitative classes: plants belonging to the variety (true-types) and plants not belonging to the variety (off-types). The type of scale is the same for qualitative, quantitative and pseudo-qualitative characteristics.

2.5.6.5 The relation between the type of characteristics (process level 1) and the type of scale of data recorded for the assessment of distinctness and uniformity is described in Table 3. A qualitative characteristic is recorded on a nominal scale for distinctness (state of expression) and for uniformity (true-types vs. off-types). Pseudo-qualitative characteristics are recorded on a nominal scale for distinctness (state of expression) and on a nominal scale for uniformity (true-types vs. off-types). Quantitative characteristics are recorded on an ordinal, interval or ratio scale for the assessment of distinctness depending on the

characteristic and the method of assessment. If the records are taken from single plants the same data may be used for the assessment of distinctness and uniformity. If distinctness is assessed on the basis of a single record of a group of plants, uniformity has to be judged with the off-type procedure (nominal scale).

Table 3: Relation between type of characteristic and type of scale of assessed data

Procedure	Type of scale (level 2)	Distribution	Type of characteristic (level 1)		
			Quantitative	Pseudo-qualitative	Qualitative
Distinctness	ratio	Continuous	✓		
		Discrete	✓		
	interval	Continuous	✓		
		Discrete	✓		
	ordinal	Discrete	✓		
	<del>combined</del>	<del>Discrete</del>		✓	
nominal	Discrete		✓	✓	
Uniformity	ratio	Continuous	✓		
		Discrete	✓		
	interval	Continuous	✓		
		Discrete	✓		
	ordinal	Discrete	✓		
	<del>combined</del>	<del>Discrete</del>	✓		
nominal	Discrete	✓	✓	✓	

2.5.7 Relation between method of observation of characteristics, scale levels of data and recommended statistical procedures

[TWC Chairperson: To update these paragraphs in accordance with any changes to documents TGP/7 and TGP/9]

2.5.7.1 Established statistical procedures can be used for the assessment of distinctness and uniformity considering the scale level and some further conditions such as the degree of freedom or unimodality (Tables 4 and 5).

2.5.7.2 The relation between the expression of characteristics and the scale levels of data for the assessment of distinctness and uniformity is summarized in Table 6.

Table 4: Statistical procedures for the assessment of distinctness

Type of scale	Distribution	Observation method	Procedure <sup>1)</sup> and further Conditions	Reference document
ratio	continuous	MS MG (VS) <sup>1)</sup>	COYD Normal distribution, $df \geq 20$	TGP/9
	discrete		long term LSD Normal distribution, $df < 20$	
interval	continuous		2 out of 3 methods (LSD 1%) Normal distribution, $df \geq 20$	
	discrete			
ordinal	discrete	VG	See explanation for QN characteristics in TGP/9 sections 5.2.2 and 5.2.3,	TGP/9
		VS	See explanation for QN characteristics in TGP/9 section 5.2.4	TWC/14/12
Combination of ordinal or ordinal and nominal scales	discrete	VG (VS) <sup>32)</sup>	See explanation for PQ characteristics in TGP/9 sections 5.2.2 and 5.2.3	TGP/9
nominal	discrete	VG (VS) <sup>2)</sup>	See explanation for QL characteristics in TGP/9 sections 5.2.2 and 5.2.3	TGP/9

1) see remark in section 4.5.6.2 [cross ref.]

2) normally VG but VS would be possible

Table 5: Statistical procedures for the assessment of uniformity

Type of scale	Distribution	Observation method	Procedure <sup>1)</sup> and Further Conditions	Reference document
ratio	continuous	MS	COYU Normal distribution	TGP/10
	discrete	MS	2 out of 3 method ( $s_c^2 \leq 1.6s_s^2$ ) Normal distribution	
interval	continuous	VS	LSD for untransformed percentage of off-types	
	discrete			
ordinal	discrete	VS	threshold model	TWC/14/12
Combination of ordinal or ordinal and nominal scales	discrete		There is no case where uniformity is assessed on combined scaled data	
nominal	discrete	VS	off-type procedure for dichotomous (binary) data	TGP/10

Table 6: Relation between expression of characteristics and scale levels of data for the assessment of distinctness and uniformity

Example	Name of characteristic	Distinctness			Uniformity		
		Unit of assessment	Description (states of expression)	Type of scale	Unit of assessment	Description (states of expression)	Type of scale
1	Length of plant	cm	assessment in cm without digits after decimal point	ratio scaled continuous quantitative data	cm	assessment in cm without digits after decimal point	ratio scaled continuous quantitative data
					True-type	Number of plants belonging to the variety	nominally scaled qualitative data
					Off-type	Number of off-types	
2	Number of stamens	counts	1, 2, 3, ... , 40,41, ...	ratio scaled discrete quantitative data	counts	1, 2, 3, ... , 40,41, ...	ratio scaled discrete quantitative data
3	Intensity of anthocyanin	1 2 3 4 5 6 7 8 9	very low very low to low low low to medium medium medium to high high high to very high very high	ordinally scaled qualitative data (with an underlying quantitative variable)	True-type	Number of plants belonging to the variety	nominally scaled qualitative data
					Off-type	Number of off-types	
4	Sex of plant	1 2 3 4	dioecious female dioecious male monoecious unisexual monoecious hermaphrodite	nominally scaled qualitative data	True-type	Number of plants belonging to the variety	nominally scaled qualitative data
					Off-type	Number of off-types	
5	Leaf blade: variegation	1 9	absent present	nominally scaled qualitative data	True-type	Number of plants belonging to the variety	nominally scaled qualitative data
					Off-type	Number of off-types	

Example	Name of characteristic	Distinctness			Uniformity		
		Unit of assessment	Description (states of expression)	Type of scale	Unit of assessment	Description (states of expression)	Type of scale
6	Time of beginning of flowering	date	e.g. May 21, 51 <sup>st</sup> day from April 1	interval scaled discrete quantitative data	Date	e.g. May 21, 51 <sup>st</sup> day from April 1	interval scaled discrete quantitative data
					True-type	Number of plants belonging to the variety	nominally scaled qualitative data
					Off-type	Number of off-types	
7	Shape	1	deltate	combination of ordinal and nominal scaled discrete qualitative data	True-type	Number of plants belonging to the variety	nominally scaled qualitative data
		2	ovate				
		3	elliptic				
		4	obovate				
		5	obdeltate				
		6	circular				
		7	oblate		Off-type		
8	Flower color	1	dark red	combination of ordinal and nominal scaled discrete qualitative data	True-type	Number of plants belonging to the variety	nominally scaled qualitative data
		2	medium red				
		3	light red				
		4	white				
		5	light blue				
		6	medium blue				
		7	dark blue				
		8	red violet				
		9	violet				
		10	blue violet				

[Annex II follows]

**TGP/8 PART I: DUS TRIAL DESIGN AND DATA ANALYSIS**

New Section 3 - Control of variation due to different observers (Drafter: Mr. Gerie van der Heijden (Netherlands))

*Notes*

29. The TWC at its twenty-fifth session, held in Sibiu, Romania, from September 3 to 6, 2007, agreed that this section be developed on the basis of sections I and II of document TWC/25/12.

30. The TWC at its twenty-sixth session agreed that Mr. Gerie van der Heijden (Netherlands) will consult his Naktuinbouw colleagues in the Netherlands to see if they could contribute a draft for this section.

31. The TWV at its forty-second session, held in Cracow, Poland, from June 23 to 27, 2008, noted that it had encouraged the development of that section and agreed that it should provide suitable text for aspects which were not adequately covered in document TWC/25/12.

[DRAFT TEXT FOLLOWS]

3. CONTROL OF VARIATION DUE TO DIFFERENT OBSERVERS

[To be developed on the basis of sections I and II of document TWC/25/12]

[The TWV noted that it had encouraged the development of that section and agreed that it should provide suitable text for aspects which were not adequately covered in document TWC/25/12.

TWC: Mr. Gerie van der Heijden (Netherlands) will consult his Naktuinbouw colleagues in the Netherlands to see if they could contribute a draft for this section.]

[Annex III follows]

**TGP/8 PART I: DUS TRIAL DESIGN AND DATA ANALYSIS**

*New Section 6 – Data processing for the assessment of distinctness and for producing variety descriptions (Drafters: experts from Finland, France, Germany, Japan, Kenya and the United Kingdom)*

*Notes*

32. The TWC at its twenty-sixth session agreed that the information provided in documents TWC/26/15 and TWC/26/23, presented by Mr. Vincent Gensollen (France) and Mr. Uwe Meyer (Germany), respectively, and an oral presentation by Ms. Mariko Ishino (Japan) included in document TWC/26/15 Add. provided valuable guidance on data processing for the assessment of distinctness and for producing variety descriptions and noted that UPOV did not have guidance on that matter in the TGP documents. It agreed that a new section should be created in document TGP/8/1, Part I as “Data processing for the assessment of distinctness and for producing variety descriptions for producing variety descriptions” and that the methods used by France, Germany and Japan should be included in a new section in document TGP/8/1, Part II as “Methods for data processing for the assessment of distinctness and for producing variety descriptions.

33. The TWC at its twenty-seventh session agreed that experts from Finland, France, Germany, Italy, Japan, Kenya and United Kingdom to provide a short description of the principles underlying the detailed methods provided in Part II.

34. Mrs. Sally Watson (United Kingdom) to provide an example for Section 7.1

[DRAFT TEXT FOLLOWS]

6. DATA PROCESSING FOR THE ASSESSMENT OF DISTINCTNESS AND FOR PRODUCING VARIETY DESCRIPTIONS

See PART II, New Section 13

[Annex IV follows]

**TGP/8 PART I: DUS TRIAL DESIGN AND DATA ANALYSIS**

*New Section – Information of good agronomic practices for DUS field trials (Drafters: Mrs. Anne Weitz (European Union) and Argentina and France to contribute))*

35. Comments: proposed by the TC at its forty-fifth session

[Annex V follows]



**TGP/8 PART II: TECHNIQUES USED IN DUS EXAMINATION**

New Section after COYU Statistical Methods for Very Small Sample Sizes (Drafter: Mr. Gerie van der Heijden (Netherlands))

*Notes*

36. The TC at its forty-fourth session held in Geneva from April 7 to 9, 2008, agreed to invite the Technical Working Parties to consider including statistical methods for very small sample sizes, subject to suitable methods which are in use by members of the Union being provided.

[DRAFT TEXT FOLLOWS]

**9. STATISTICAL METHODS FOR VERY SMALL SAMPLE SIZES<sup>v</sup>***Note*

The TC agree to invite the Technical Working Parties to consider including statistical methods for very small sample sizes, subject to suitable methods which are in use by members of the Union being provided.

The TC requested that for each statistical method an explanation of the requirements for its application and the situations where it would be appropriate to apply the method be included

9.5.1 One of the main problems when applying a statistical test on small trials is that we do not have enough data available to limit the risk of making a wrong decision to an acceptable level. Every statistical test has a probability/risk of making wrong decisions: there is a Type I error, i.e. the risk of declaring two varieties different where in reality they are not significantly different, and a Type II error: declaring two distinct varieties not significantly different.

9.5.2 In general we control the Type I error by fixing the significance level ( $\alpha$ ). However, especially with small trials, a low risk of Type I (low  $\alpha$ ) considerably increases the Type II error, or alternatively stated, such a test has a considerable lack of discriminating power. Another problem with small sample sizes is that we do not have enough data to test our assumptions.

9.5.3 From a statistical point of view it is possible to statistically compare the mean of a candidate variety after a single measurement on a single plant in a single year with a set of reference varieties, if at least several reference varieties are being measured in the same year as well as in one or more other years. For this, one could use any statistical package capable of analysing unbalanced two-way designs with the factors years and varieties. This analysis can be seen as an extension of the long-term LSD but is not standard UPOV practice. The test is based on the usual assumptions, which can however not be tested with such a small dataset. If we are willing to accept assumptions like normality, homogeneity of variance and additivity, e.g. from previous knowledge, the test is in principal valid, although lack of power is still a problem.

9.5.4 In general, small sample size may refer to different aspects of the variety trial:

- (a) limited number of plants/measurements in a plot,
- (b) limited number of replications,
- (c) limited number of varieties,
- (d) limited number of years,

or any combination of these aspects.

9.5.5 Ad (a). For any experiment, sound experimental design principles should be kept in mind at all times. With regard to the number of plants per plot, it is bad practise to use so few plants in a plot that measured plants are considerably influenced by their neighbours. A plant of a small variety next to a plant of a tall variety may lead to both plants having a more extreme expression than under the condition of neighbouring plants of similar height. This interaction effect hampers unbiased comparisons. To overcome this neighbouring effect, one often uses border plants. Alternatively one can group varieties in different height classes such that these effects are minimised within the groups. Also refer to document TGP/8 Part 1, section 1.6.3.7 for further details.

Ad (b). The number of replications in a trial is often at least 2. Strictly speaking, for the COYD or long-term LSD we only use the variety means of the year for the analysis, so from a theoretical point of view a single replication per variety per year is sufficient. Of course having no replications within a year may lead to a significant increase of the uncertainty of the estimate of the variety mean and it limits the testing of assumptions for the analysis.

Ad (c). With regard to the number of varieties in the test, from a theoretical point as few as three or four varieties are sufficient if two or three years of data are used. However, in most cases, experience has taught us that such small experiments with just a few degrees of freedom are not really useful, as the discriminating power of the test is too low. A low power may be less of a problem, if we have just a few varieties and large and consistent differences between them.

Ad (d). Theoretically spoken, it is possible to make a decision based on a single year's observation of a candidate variety, when reference varieties are also observed and data from the reference varieties over several years are available. Several assumptions need to be made and these assumptions can not be tested. An important assumption is that the candidate variety to be tested does not exhibit a strong interaction from year to year with close reference varieties for the characteristic under study. However, the most important drawback is that the power of the test is very limited, i.e. the chance that a truly significant difference between a pair of varieties will indeed be declared significant in the analysis is very small. In that case, the conclusion would be that the two varieties are not sufficiently different to obtain a significant result given the small sample size. If this information is sufficient for rejection of the candidate variety is an open question, but probably not.

9.5.6 Historical data can be used to gain insight in the lack of power of the experiment, i.e. the risk of accidentally rejecting a distinguishable variety. One can also use these data to get an impression of the best way to improve the experimental design.

9.5.7 The power of the test can be increased in several ways. If a reference variety is not tested in the same years as the candidate variety, the standard error of this difference is rather large. By putting the varieties in the same trial in the next year, the standard error for this difference can be reduced considerably.

9.5.8 Another way to increase the power of the test is by increasing the number of degrees of freedom for the residual term. This can be done by using more data from previous years, which is exactly what is done in the long-term LSD.

9.5.9 Note that small trials are troublesome for distinctness testing, but even more so for uniformity testing. The COYU requires a considerable number of plants per plot for a reasonable estimate of the standard deviation.

9.5.10 Another problem when we use small and unbalanced designs is that some variety differences are tested with greater power than others. The comparison of candidate varieties with reference varieties which are less frequent (or even absent) in the years of testing of the candidates will have a much larger standard error of difference. This might lead to rejecting a candidate which can not be declared sufficiently distinct, but which is due to bad luck since it is close to a reference not in the collection of reference varieties on the field. The procedure is in itself statistically valid and sound, but might be unwanted from a fair policy point of view.

[Annex VI follows]

**TGP/8 PART II: TECHNIQUES USED IN DUS EXAMINATION**

*New Section 11 Examining DUS in bulk samples (Drafter: Mr. Kristian Kristensen (Denmark))*

*Notes*

37. The TC at its forty-fourth session held in Geneva from April 7 to 9, 2008, requested that for each statistical method an explanation of the requirements for its application and the situations where it would be appropriate to apply the method be included.

[DRAFT TEXT FOLLOWS]

## 11. EXAMINING DUS IN BULK SAMPLES

### 11.1 Introduction and abstract

In some crops samples are bulked before certain characteristics are examined. The term “bulk sampling” is used here for the process of merging some or all individual plants before recording a characteristic. There are different degrees of bulking ranging from: (1) merging pairs of plants, (2) merging 3 or 4 up to all plants within a plot up to (3) merging all plants within a variety. The degree of bulking may play an important role in the efficiency of the tests. Bulking is usually only applied where the measurement of the characteristic is very expensive or very difficult to obtain for individual plants. Some examples are seed weight in cereals and peas and beans, and erucic acid content in rapeseed. This section describes some of the consequences of bulk sampling. It is shown that the test of distinctness (using COYD, see Part II: Section 3.2 [*cross ref.*]) may be expected to be relatively insensitive to the degree of bulking, but that the efficiency of the tests for uniformity (using COYU, see Part II: Section 4.2 [*cross ref.*]) must be expected to decrease when the data are bulked. The COYU test for uniformity cannot be carried out if all plants within a plot are bulked.

### 11.2 Distinctness

11.2.1 In the COYD method for examining distinctness the basic values to be used in the analyses are the annual variety means. As bulk sampling also gives at least one value for each variety per year, it will usually still be possible to use the COYD method for distinctness purposes for any degree of bulking, as long as at least one value is recorded for each variety in each year and that the bulk samples are representative for the variety. However, some problems may be foreseen: the assumption of data being normal distributed may be better fulfilled when the mean of many individual measurements are analyzed instead of the mean of fewer measurements or, in the extreme, just a single measurement.

11.2.2 The efficiency of the test of distinctness may be expected to be lower when based on bulked samples than when it is based on the mean of all individual plants in a year. The loss will be from almost zero upwards, depending on the importance of the different sources of variations. The variation which is relevant for the efficiency of variety comparisons is formulated in the following model:

$$\sigma_{total}^2 = \sigma_{vy}^2 + \sigma_p^2 + \sigma_i^2 + \sigma_m^2$$

where

$\sigma_{total}^2$  is the total variance of a characteristic used for comparing varieties.

The total variance is regarded as being composed of four sources of variation:

- 1:  $\sigma_{vy}^2$  the variance component due to the year in which the variety is measured
- 2:  $\sigma_p^2$  the variance component due to the plot in which the measurement was taken
- 3:  $\sigma_i^2$  the variance component due to the plant on which the measurement was taken
- 4:  $\sigma_m^2$  the variance component due to the inaccuracy in the measurement process

11.2.3 In cases where the data are not bulked the variance of the difference between two variety means,  $\sigma_{diff}^2$ , becomes:

$$\sigma_{diff}^2 = 2 \left\{ \frac{\sigma_{vy}^2}{a} + \frac{\sigma_p^2}{ab} + \frac{\sigma_i^2}{abc} + \frac{\sigma_m^2}{abc} \right\}$$

where

$a$  is the number of years used in the COYD method

$b$  is the number of replicates in each trial

$c$  is the number of plants in each plot

11.2.4 Assuming that each bulk sample has been composed in such a way that it represents an equal amount of material from all the individual plants which have been bulked into that sample, the variance between two varieties based on  $k$  bulked samples (each of  $l$  plants) becomes:

$$\sigma_{diff}^2 = 2 \left\{ \frac{\sigma_{vy}^2}{a} + \frac{\sigma_p^2}{ab} + \frac{\sigma_i^2}{abkl} + \frac{\sigma_m^2}{abk} \right\}$$

where

$k$  is the number of bulk samples

$l$  is the number of plants in each bulk sample

11.2.5 Thus if all plants in each plot are divided in  $k$  groups of  $l$  plants each and an average measurement is taken for each of the  $k$  groups, then only the last term in the expression for  $\sigma_{diff}^2$  has increased (as  $kl$  is equal to  $c$ ). For many characteristics it is found that the variance caused by the measurements process is small and hence the bulking of samples will only have a minor effect on the conclusions reached by the COYD method. Only if the variance caused by the measurement process is relatively large can bulking have a substantial effect on the distinctness tests using COYD.

*Example 1*

*Variances for comparing varieties were estimated (by the use of estimated variance components) for different degrees of bulking. The calculations were based on the weight of 100 seeds of 145 pea varieties grown in Denmark during 1999 and 2000. In this example, the contribution to the variance caused by the measurement process was relatively very small, which means that bulking will have a low influence on the test for distinctness. In a 3 year test with 30 plants in each of 2 blocks, the variance of a difference between two varieties was estimated to be 2.133 and 2.135, for no bulking and a single bulk sample per plot, respectively.*

*For other variables the variance component due to the measurement process may be relatively more important. However, it is likely that in most practical cases this variance component will be relatively small.*

11.2.6 In some cases each bulk sample is not drawn from a specific set of plants (say, plant 1 to 5 in bulk sample 1, plant 6 to 10 in bulk sample 2 etc.), but bulk samples are formed from mixed samples of all plants in a plot. This means that different bulk samples may contain material from the same plants. It must be expected that similar results apply here, although, in this situation, the effect of bulking may have an increased effect because there is no guarantee that all plants will be equally represented in the bulk samples.

11.3 Uniformity

11.3.1 Bulking within plot

11.3.1.1 In COYU the test is based on the standard deviation of the individual plant observations (within plots) as a measurement of uniformity. The log of the standard deviations plus one are analyzed in an over-years analysis; i.e. the values  $Z_{vy} = \log(s_{vy} + 1)$  are used in the analyses. The variance on these  $Z_{vy}$  values can be regarded as arising from two sources, a component that depends on the variety-by-year interaction and a component that depends on the number of degree of freedom used for estimating the standard deviation,  $s_{vy}$  (the fewer degrees of freedom the more variable the standard deviation will be). This can be written (note that the same symbols as used in the distinctness section will be used here with different meaning):

$$\text{Var}(Z_{vy}) = \sigma_{vy}^2 + \sigma_f^2$$

where this variance can be regarded as being composed of two sources of variation:

- 1:  $\sigma_{vy}^2$  the variance component due to the year in which the variety is measured
- 2:  $\sigma_f^2$  the variance component due to the number of degrees of freedom used in estimating

$s_{vy}$

$\sigma_f^2$  is approximately  $\frac{1}{2v} \left( \frac{\sigma}{\sigma + 1} \right)^2$  when the recorded variable is normally distributed and the standard deviations do not vary too much. This last expression reduces to  $0.5/v$  when  $\sigma \gg 1$ . Here  $\sigma$  is the mean value of the  $s_{vy}$  values and  $v$  is the number of degrees of freedom used in the estimation of  $s_{vy}$ .

11.3.1.2 The variance caused by the year in which the variety is measured may be assumed to be independent of whether the samples are bulked or not, whereas the variance caused by

the number of degrees of freedom will be increased when bulked samples are used because a lower number of degrees of freedom is available.

11.3.1.3 The variance of a difference between a  $Z_{vy}$  for a candidate variety and the mean of the reference varieties'  $Z_{vy}$  values may be written:

$$\sigma_{diff}^2 = (\sigma_{vy}^2 + \sigma_f^2) \left( \frac{1}{a} + \frac{1}{ar} \right)$$

where

$a$  is the number of years used in the test

$r$  is the number of reference varieties

#### *Example 2*

*The effect of bulking in the test for uniformity, an estimate was made using the same data as for Example 1 I Part II, section 11.2.5 [cross ref.]. For a test using 50 reference varieties in 3 years with 30 plants per variety in each of 2 plots per trial the variance for comparing the  $Z_{vy}$  value for a candidate variety and the mean of the reference varieties'  $Z_{vy}$  will be 0.0004 if no bulking is done. This can be compared to 0.0041, 0.0016 and 0.0007 when 2, 4 and 10 bulk samples per plot were used. Thus, in this example, the effect of bulking has a great influence on the test for uniformity. The variance increased, approximately by a factor of 10 when changing from individual plant records to just 2 bulk samples per plot. This means that the degree of non-uniformity must be much higher for it to be detected when 2 bulk samples are used instead of individual plant records.*

### 11.3.2 Bulking across plots

Bulking across plots means that part of the between plot (and block) variation will be included in the estimated standard deviation between bulked samples. If this variation is relatively large it will tend to mask any differences in uniformity between varieties. In addition some noise may also be added because the ratio of material from the different plots may vary from bulk to bulk. Finally the assumptions for the present recommended method, COYU, may not be fulfilled in such cases. Therefore it is recommended to bulk only within plots.

### 11.3.3 Taking just one bulk sample per plot

In general, if all plants in a plot are bulked such that only a single sample is available for each plot, it becomes impossible to calculate the within plot variability and in such cases no tests for uniformity can be performed. In rare cases, where non-uniformity may be judged from values that can only be found in mixtures, non-uniformity may be detected even where a single bulk sample for each plot is used. For example, in the characteristic "erucic acid" in oil seed rape, values between 2% and 45% can only arise because of a lack of uniformity. However this only applies in certain special cases and even here the non-uniformity may only show up under certain circumstances.

[Annex VII follows]

**TGP/8 PART II: TECHNIQUES USED IN DUS EXAMINATION**

*New Section 12 - Examining characteristics using image analysis (Drafter: Mr. Gerie van der Heijden (Netherlands))*

Notes

38. With regard to new proposals concerning the content of document TGP/8, the TWA, at its thirty-seventh session, held in Nelspruit, South Africa, from July 14 to 18, 2008, proposed to remove Section III: “Examination of characteristics using image analysis” from TGP/12 and to include that section in document TGP/8, on the basis that it did not concern characteristics, but methods of examining characteristics. The TWC, at its twenty-sixth session, agreed with that proposal. The TC-EDC, at its meeting on January 8, 2009, noted that the section on the examination of characteristics using image analysis would require further substantial development and would not be finalized in time for the initial adoption of document TGP/8 (document TGP/8/1) (see document TC/45/5 paragraph 25).

39. The TWC, at its twenty-sixth session, agreed as follows:

- (a) for existing characteristics: to explain the need to compare the results of the characteristics examined by the old method and by image analysis. The TWC noted that it might, in some cases, lead to a modification of the existing characteristic, in which case it would be necessary for the Test Guidelines to provide a clear definition of the characteristic, including an outline of the algorithm which defined the characteristic;
- (b) for new characteristics: to provide guidance on the need to meet the requirements for a characteristic to be used for DUS, as set out in the General Introduction, and the need to check for independence from other characteristics, in the same way as for other characteristics. In response to an observation from an expert from China, the TWC agreed that the guidance to be developed in document TGP/8 on image analysis should provide guidance on how to consider calibration of images, particularly images containing more than one object, to account for the differing distances of the objects from the camera.

40. The TWC at its twenty-seventh session agreed that existing text be moved to Part I and Mr. Gerie van der Heijden (Netherlands) and Mr. Nik Hulse (Australia) to provide additional information for Part II.

[DRAFT TEXT FOLLOWS]



## 12. EXAMINATION OF CHARACTERISTICS USING IMAGE ANALYSIS<sup>vi</sup>

### 12.1 Introduction

Characteristics which may be examined by image analysis should also be able to be examined by visual observation and/or manual measurement, as appropriate. Explanations for observing such characteristics, including where appropriate explanations in Test Guidelines, should ensure that the characteristic is explained in terms which would enable the characteristic to be understood and examined by all DUS experts.

### 12.2 Combined characteristics

12.2.1 The General Introduction (document TG/1/3, Chapter 4, Section 4) states that:

“4.6.3 Combined Characteristics

“4.6.3.1 A combined characteristic is a simple combination of a small number of characteristics. Provided the combination is biologically meaningful, characteristics that are assessed separately may subsequently be combined, for example the ratio of length to width, to produce such a combined characteristic. Combined characteristics must be examined for distinctness, uniformity and stability to the same extent as other characteristics. In some cases, these combined characteristics are examined by means of techniques, such as Image Analysis. In these cases, the methods for appropriate examination of DUS are specified in document TGP/12, ‘Special Characteristics’.”

12.2.2 Thus, the General Introduction clarifies that the use of image analysis is one possible method for examining characteristics which fulfil the basic requirements for use in DUS testing (see document TG/1/3, Chapter 4.2), which includes the need for the uniformity and stability of such characteristics to be examined. With regard to combined characteristics, the General Introduction also explains that such characteristics should be biologically meaningful.

### 12.3 Guidance on the use of image analysis

[to be developed by the Technical Working Party on Automation and Computer Programs (TWC)]

[The TWC, at its Twenty-sixth Session, agreed as follows:

- (a) for existing characteristics: to explain the need to compare the results of the characteristics examined by the old method and by image analysis. The TWC noted that it might, in some cases, lead to a modification of the existing characteristic, in which case it would be necessary for the Test Guidelines to provide a clear definition of the characteristic, including an outline of the algorithm which defined the characteristic;
- (b) for new characteristics: to provide guidance on the need to meet the requirements for a characteristic to be used for DUS, as set out in the General Introduction, and the need to check for independence from other characteristics, in the same way as for other characteristics

In response to an observation from an expert from China, the TWC agreed that the guidance to be developed in document TGP/8 on image analysis should provide guidance on how to consider calibration of images, particularly images containing more than one object, to account for the differing distances of the objects from the camera.]

The TWC also agreed that Mr. Gerie van der Heijden (Netherlands) should prepare a draft text for Section III, Subsection 3, taking into account the comments made above.]

[the TWA, at its thirty seventh session, agreed that for existing characteristics: to explain the need to compare the results of the characteristics examined by old method and by image analysis; for new characteristics: to provide guidance on the need to meet the requirements for a characteristic to be used for DUS, as set out in the General Introduction, and the need to check for independence from other characteristics]

[Annex VIII follows]

## ANNEX VIII

**TGP/8 PART II: TECHNIQUES USED IN DUS EXAMINATION**

New Section 13 - Methods for data processing for the assessment of distinctness and for producing variety descriptions: (Drafters: experts from Finland, France, Germany, Japan, Kenya and the United Kingdom)

*Notes*

41. The TWC at its twenty-sixth session agreed that the information provided in documents TWC/26/15 and TWC/26/23, presented by Mr. Vincent Gensollen (France) and Mr. Uwe Meyer (Germany), respectively, and an oral presentation by Ms. Mariko Ishino (Japan) included in document TWC/26/15 Add. provided valuable guidance on data processing for the assessment of distinctness and for producing variety descriptions and noted that UPOV did not have guidance on that matter in the TGP documents. It agreed that a new section should be created in document TGP/8/1, Part I as “Data processing for the assessment of distinctness and for producing variety descriptions for producing variety descriptions” and that the methods used by France, Germany and Japan should be included in a new section in document TGP/8/1, Part II as “Methods for data processing for the assessment of distinctness and for producing variety descriptions.

42. The TWC at its twenty-seventh session agreed that experts from Finland, France, Germany, Italy, Japan, Kenya and United Kingdom to provide a short description of the principles underlying the detailed methods provided in Part II.

43. Mrs. Sally Watson (United Kingdom) to provide an example for Section 13.1

[DRAFT TEXT FOLLOWS]

13. METHODS FOR DATA PROCESSING FOR THE ASSESSMENT OF DISTINCTNESS AND FOR PRODUCING VARIETY DESCRIPTIONS

[The TWC agreed that the information provided in documents TWC/26/15 and TWC/26/23, presented by Mr. Vincent Gensollen (France) and Mr. Uwe Meyer (Germany), respectively, and an oral presentation by Ms. Mariko Ishino (Japan) included in document TWC/26/15 Add. provided valuable guidance on data processing for the assessment of distinctness and for producing variety descriptions and noted that UPOV did not have guidance on that matter in the TGP documents. It agreed that a new section should be created in document TGP/8/1, Part I as “Data processing for the assessment of distinctness and for producing variety descriptions for producing variety descriptions” and that the methods used by France, Germany and Japan should be included in a new section in document TGP/8/1, Part II as “Methods for data processing for the assessment of distinctness and for producing variety descriptions. [...]The TWC agreed that Finland, France, Germany, Japan, Kenya and the United Kingdom should prepare information on their methods for inclusion in the next draft of document TGP/8]

13.1 United Kingdom

**13.1 Handling measured, quantitative characteristics for vegetable and herbage crops tested in the United Kingdom**

13.1.1 This document provides an explanation of how measured, quantitative characteristics are handled and used to develop variety descriptions in the United Kingdom for vegetable and herbage crops.

13.1.2 In vegetable and herbage crops, which are mostly cross-pollinated except for pea which is self-pollinated, the trials are conducted according to the UPOV Test Guidelines.

13.1.3 For the measured, quantitative characteristics, as part of the determination of distinctness, COYD is applied on the original scale of the characteristics.

13.1.4 To develop variety descriptions, over-year variety means are calculated on the original scale of the characteristics. These over-year means are then converted to notes.

13.1.5 For each crop the over-year variety means of the varieties in trial are calculated from their yearly means in trials. For herbage crops the past 10 years are used, whereas for vegetable crops all years are included in which the reference collection varieties have been tested. As not all varieties are present in all years, a fitted constants analysis is used to adjust the over-year means for the different years varieties were present in. This is done using the DUSTNT module FITC in conjunction with the module FIND.

13.1.6 The over-year means are converted to notes using the DUSTNT module VDES. This permits two methods of division of the range of expression into states and notes as follows:

- a) By division of the range of expression of the over-year means for the reference collection varieties into equal-spaced states. The number of states is as given in the UPOV Test Guideline.
- b) By use of delineating varieties to divide the range of expression into states.

13.1.7 For vegetable crops excluding potato method (a) is used to divide the range of expression into states and notes, and for herbage crops method (b) is used.

13.1.8 For herbage crops the DUSTNT module SAME is used to check whether there are varieties with the same variety description.

13.1.9 For herbage crops the DUSTNT module MOST, is used in conjunction with the modules SSQR and DIST to find most similar varieties based on multivariate distances.

13.2 Finland

**13.2 Determination of Notes for Measured Characteristics of Cross-Pollinated Species**

13.2.1 The method how measured, quantitative characters of cross-pollinated species are transformed into notes in Finland is described in this document.

13.2.2 In Finland, the Combined Over Years method (DUST Package) is used to assess the distinctness and uniformity of measured characters of cross-pollinated plants. The specific Test Guidelines indicates the required amount of individuals in the test. Usually measurements of quantitative characters are done from 60 single plants.

13.2.3 If the candidate variety fulfills the DUS criteria, the transformation of characters into notes is done for the variety description. The transformation of characters to notes is done for each year separately by using the least significant difference LSD 1% value from the DUST9 module of the single years test. The final note is the fusion of these values attained from two or three testing periods.

13.2.4 The value for LSD 1% is considered as a two note difference. Two note difference is considered as a clear difference in 'General introduction'. This rule is advised for interpretation of observations of quantitative characteristics without the application of statistical methods. This principle is applied here, though it is not an absolute standard. If LSD 1% would be used as a one note difference, the width of one note would be two times wider and the values would mostly be five or close to it. LSD 1% value is divided by two to get the one note 'width' for counting the scale.

13.2.5 The variety which is located at the middle of the ranked variety list is used to present the note five. By using this value as an anchor point for the scale, the limits for other notes are counted. It is important that first the note five 'spreads' over the key value, because this value is considered as a middle point of the scale.

13.2.6 As an example, the determination of notes for the characteristic length of longest stem in timothy (*Phleum pratense*, UPOV TG/34/6 characteristic no. 9.) is presented. In the scale for Growing cycle 1, the ranked value for note five is 1131.75 mm. The limits for note five are from 1105.68 mm to 1157.83 mm (span of one note is 52.15 mm which is spread over value 1131.75, i.e. 26.075 mm on both sides). Three candidate varieties and three reference varieties are included in the example. In Table A, all the reference varieties are presented.

TABLE A

Means and notes of the character length of longest stem for 58 reference varieties and 3 candidate varieties. Notes are given according to the scales from Figure 1.

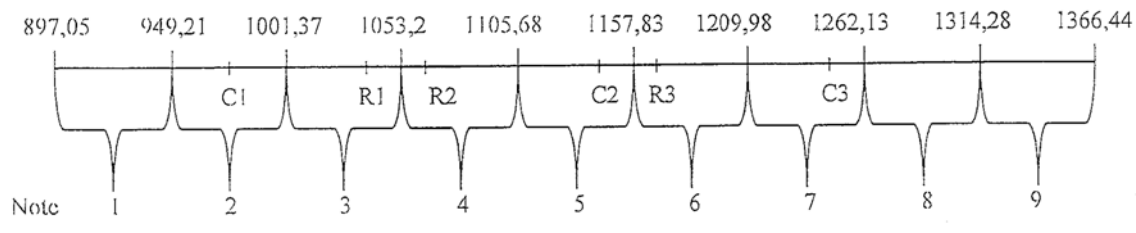
Variety	mean cycle 1	mean cycle 2	note cyc1	note cycle2	final note
Alexander	1187.963	1079.937	6	6	6
Bilbo	1184.482	1073.060	6	6	6
Comtal	1182.298	1121.723	6	6	6
Haukila	1193.220	1124.715	6	6	6
Hja Tiiti	1177.401	1099.171	6	6	6
Niilo	1163.676	1087.547	6	6	6
Nokka	1169.178	1084.585	6	6	6
Saga	1162.915	1115.309	6	6	6
Saguenay	1241.350	1075.108	7	6	6
Candidate3	1247.418	1085.617	7	6	6
Szarvasi-60	1160.033	1102.463	6	6	6
Alma	1129.250	1055.518	5	5	5
Barmidi	1145.067	1009.506	5	5	5
Billy	1140.145	1107.154	5	6	5
Bodin	1157.192	1080.214	5	6	5
Candidate2	1142.896	1052.053	5	5	5
Bottnia II	1120.209	1074.090	5	6	5
Carola	1202.265	1031.624	6	5	5
Comer	1149.167	1022.001	5	5	5
Engmo	1105.789	1079.133	5	6	5
Erecta	1113.320	1090.889	5	6	5
Goliath	1073.732	1002.738	4	5	5
Grindstad	1064.367	1017.783	4	5	5
Iki	1122.657	1130.778	5	6	5
Jonatan	1153.056	1092.797	5	6	5
Jouliette	1155.228	1096.119	5	6	5
Jögeva 54	1179.194	1067.970	6	5	5
Kämpe II	1141.096	1039.338	5	5	5
Linus	1126.054	1081.078	5	6	5
Noreng	1064.765	1032.674	4	5	5
Otto	1147.578	1095.721	5	6	5

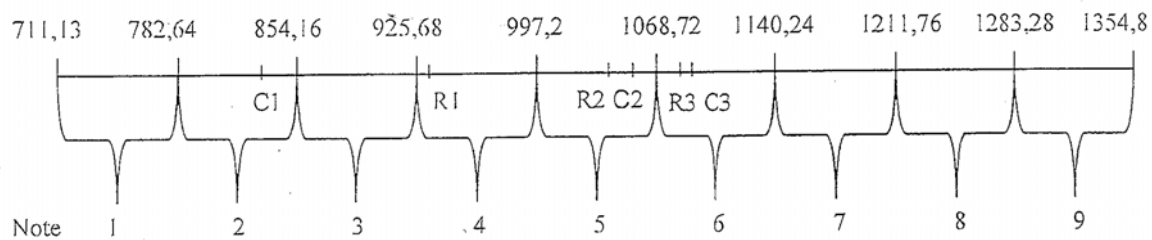
Variety	mean cycle 1	mean cycle 2	note cycle1	note cycle2	final note
Promesse	1106.941	1028.101	5	5	5
Ragnar	1148.307	1075.430	5	6	5
Sobol	1195.870	1051.092	6	5	5
Snorri	1139.985	1085.358	5	6	5
SW Janus	1064.656	1057.217	4	5	5
Tammisto II	1169.548	1027.743	6	5	5
Tarmo	1119.613	997.216	5	5	5
Tenho	1151.037	999.464	5	5	5
Tika	1154.765	1017.026	5	5	5
Topas	1170.965	1017.741	6	5	5
Tundra	1118.927	973.412	5	4	5
Turku	1136.744	1008.277	5	5	5
Tuukka	1136.614	1035.912	5	5	5
Tuure	1116.041	940.266	5	4	5
Tryggve	1117.383	1044.938	5	5	5
Uula	1071.082	1032.955	4	5	5
Vähäsöyrinki	1152.661	1055.362	5	5	5
Argus	1065.424	949.176	4	4	4
Farol	1050.870	946.707	3	4	4
Forus	1085.912	1017.135	4	5	4
Jarl	1061.794	961.897	4	4	4
Liglory	1048.505	952.761	3	4	4
Liscka	1095.313	987.829	4	4	4
Nuutti	1033.737	929.759	3	4	4
Peti	1090.900	926.385	4	4	4
Phlewiola	1040.769	963.806	3	4	4
Tammisto	1096.183	979.941	4	4	4
Tia	1063.439	996.023	4	4	4
Vega	1084.838	995.675	4	4	4
Candidate 1	979.862	839.060	2	2	2

Figure 1. Scales for two different growing cycles for the characteristic length of longest stem in timothy. The situation of three candidate (C) and reference (R) varieties are indicated.

Growing cycle 1 (scale in mm)



Growing cycle 2



13.2.7 Table 1 presents the different values for the calculation of the scale for both growing cycles. In the Growing Cycle 1 the LSD 1% value was 104.31 mm and in the Cycle 2 143.02 mm. This variation is due to environmental effect (e.g. different water or temperature conditions during growing periods, variation in the soil). Mean value for note 5 is 10 cm longer in the Growing cycle 2. Also the width of one note is 2 cm longer in the Growing cycle 2.

Table 1. LSD 1% values, width of one note and ranked value for the note five for two testing years.

	Growing cycle 1	Growing cycle 2
LSD 1% (mm)	104.31	143.02
width of one note (mm)	52.15	71.51
ranked value for note 5 (mm)	1131.75	1032.96

13.2.8 Different conditions in different testing periods cause variation to the variety means and to the LSD values. If two or three different testing periods give different notes for a character (as in Table 2 for candidate 3, growing cycle 1: 7, cycle 2: 6), the 'fusion' of notes is done towards the value 5. Therefore in the case of candidate 3, the final note is 6. If the data is obtained from three years and there is variation in the notes, the fusion is done similarly towards note 5. For example 5, 5 and 7 are transferred to 5, 6, 6 (1 note is given from 7 to 5) and the final note is therefore 6, which is the most abundant note. If there is an obvious reason for the odd note, for example extreme conditions during the growth period or severe area of testing field, it may be neglected.

*Table 2. Means and notes of the character length of longest stem in timothy for three candidate and three reference varieties in two different growing cycles. Notes for the characters are given according to the scales in Figure 1.*

	<b>Mean for cycle 1</b>	<b>Mean for cycle 2</b>	<b>Note for cycle 1</b>	<b>Note for cycle 2</b>	<b>Final Note</b>
Candidate 1	979.86	839.06	2	2	2
Candidate 2	1142.9	1052.05	5	5	5
Candidate 3	1247.42	1085.62	7	6	6
Reference 1	1033.74	929.76	3	4	4
Reference 2	1064.37	1017.78	4	5	5
Reference 3	1169.18	1084.59	6	6	6

13.2.9 In Table 2, Candidate variety 1 is considered as note 2 which means very short to short. This variety, being the shortest one from year to year, could be used as an example variety for this character. The use of example varieties for the determination of notes is difficult for this character, because most of the varieties tend to get the same value. In this timothy example 60% of the varieties have the value 5 for the character length of longest stem (see Table A). Also the continuous variation in the character makes it difficult to judge the note in the field.

## Conclusions

13.2.10 This method provides an objective way to transform measured characters into notes for each individual year separately based on 1% LSD value and the ranking list of varieties. The final note is the fusion of these notes from individual years. This method is suitable for species where example varieties are difficult to use for character determination.



13.3      Japan

**13.3      The Method to adjust the Table of Assessment for Quantitative Characteristics**

Japan  
National Center for Seeds and Seedlings (NCSS)

TABLE OF CONTENTS

1. Introduction
2. Method with the Fundamental Table of Assessment (FAT)
  - 2.1 [Background]
  - 2.2 [What is FAT?]
  - 2.3 [Composition of FAT]
  - 2.4 [Practical adjusting methods for use of FAT]
    - 2.4.1 **【Overview of the methods】**
    - 2.4.2 **【Step 1-1: Check whether PD is in the range of standard deviation of HD】**
    - 2.4.3 **【Step 1-2: Check whether plants show satisfactory growth for assessment of DUS】**
    - 2.4.4 **【Step 2: Check whether the characteristic is combined characteristic or not】**
    - 2.4.5 **【Step 3-1: Adjustment FAT with the proportional method】**
    - 2.4.6 **【Step 3-2: Adjustment FAT with the sliding method】**
  - 2.5 [Difference between self-pollinated varieties and cross-pollinated varieties]
3. Conclusions

## 1. Introduction

- 1.1 This provides an explanation of the Japanese methods to adjust the table of assessment for quantitative characteristics in characteristics table of TG.
- 1.2 The method is based on the premise as below.
  - a) This method is mainly used for ornamental plants and vegetable crops.
  - b) Basically, DUS growing trial for ornamental plants and vegetable crops is assessed in two independent growing cycles. When we decide it is satisfactory for the assessment of DUS, further growing trial will not be done. This document explains the adjusting method of the quantitative characteristics from the result of DUS growing trial of one growing cycle.
  - c) The term “the table of assessment” means the table to evaluate the notes from the data of quantitative characteristics.

## 2. Method with the Fundamental Table of Assessment (FAT)

### 2.1 [Background]

2.1.1 For the assessment of note in most quantitative characteristics, the relative assessment based on the data of the example variety in one time seems to be general method. Especially when we start DUS growing trial about new species, we use this method. But, we seek more effective method to reduce the yearly variation for concerned species which we have examined for many years.

2.1.2 The method with FAT is used for this purpose. We make FAT as the adjustable base only for the species that had examined in sufficient number of DUS growing trials. FAT is adjusted every year to correct yearly variations of data.

### 2.2 [What is FAT?]

2.2.1 FAT is the table of assessment that made from the enough experimental data about the species. In the concrete, one of the experimental data is “Proposition by experts”. It is the table that is based on the expert’s experience and knowledge, and the table covers the full ranges of variations that the species or variety groupings show under the normal growth. The other of the experience is “Accumulated statistical data.” It is the data accumulated about several example varieties in sufficient number of DUS growing trials. We try to accumulate the data from sufficient number of growing trials. But it needs long time to accumulate the data in one site for many times. Before we get enough data to make FAT, we set the notes based on example variety’s data from one growing trial and our experiences. If we estimate the data accumulated in certain place for one species are enough stable, we make FAT based on the data. FAT is available only for species that had examined for sufficient experience of DUS growing trial about several example varieties.

### 2.3 [Composition of FAT]

2.3.1 Table 1 shows the part of example FAT, the characteristic “length of leaf blade”. There are nine notes. In the note 5,  
Range : 70-79 mm  
Interval : 10 mm,  
Median : 75 mm  
Standard example variety of the note 5 : ‘EV-B’

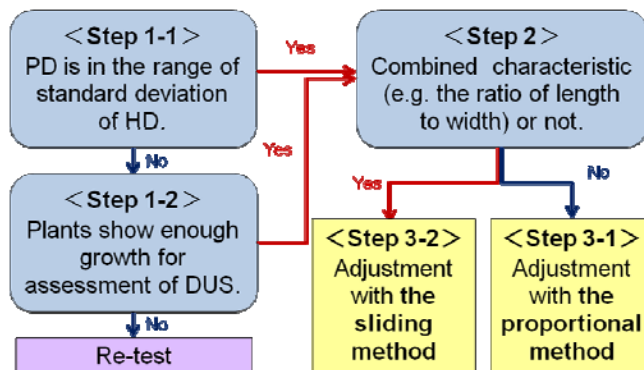
Table 1: Example FAT for the characteristic “ length of leaf blade”

Characteristics	Note	1	2	3	4	5	6	7	8	9
Length of leaf blade (mm)			40	50	60	70	80	90	100	110
	Range	~ 39	~ 49	~ 59	~ 69	~ 79	~ 89	~ 99	~ 109	~
	Interval		10	10	10	10	10	10	10	
	Median		45	55	65	75	85	95	105.	
	Example variety			EV-A		EV-B				

## 2.4 [Practical adjusting methods for use of FAT]

### 2.4.1 【Overview of the methods】

2.4.1.1 There are two methods in adjustment of FAT. One is the proportional method, the other is the sliding method. PD indicates Present data, the data of the example variety measured in this time. HD indicates Historical data, the mean of the data of the example variety measured in sufficient times of DUS growing trial.



\*PD: Present data = The data of Example Variety measured in this time

HD: Historical data = Mean of the Data of Example Variety measured in sufficient number of DUS growing trial

Fig. 1: Flow chart of the practical adjusting method with FAT

2.4.1.2 Figure 1 shows the practical adjusting method.

Step 1-1: Check whether PD is in the range of standard deviation of HD

Step 1-2: Check whether plants show satisfactory growth for assessment of DUS

Step 2 : Check whether the characteristic is combined characteristic or not.

Step 3-1: Adjustment FAT with the proportional method

Step 3-2: Adjustment FAT with the sliding method

### 2.4.2 【Step 1-1: Check whether PD is in the range of standard deviation of HD】

2.4.2.1 We confirm the example variety’s normal growth by checking step 1-1. If step 1-1 is not satisfied, we should check whether the growing trial can be done reasonably and properly or not.

2.4.2.2 The examples are as follows.

Characteristic “length of leaf blade”

HD: 74.0mm

Standard deviation: 5.01

Range of the standard deviation: 69.0-79.0mm

2.4.2.2.1 If PD is 70.3mm, PD is in the range of standard deviation of HD. → Go to step 2

2.4.2.2.2 If PD is 83.6mm, PD is out of the range of standard deviation of HD. → Go to step 1-2.

2.4.3 **【Step 1-2: Check whether plants show satisfactory growth for assessment of DUS】**

2.4.3.1 The purpose of step 1-2 is to check whether the growing trial can be done reasonably and properly or not.

2.4.3.2 If the example variety we expect to use for adjustment doesn't show satisfactory growth, we can use another example variety (which shows satisfactory growth and has enough experimental data) for adjustment of FAT. In this case, we estimate plants in this growing trial shows satisfactory growth for evaluation of DUS. → Go to step 2

2.4.3.3 In the case other varieties also show unusual growth, we should try to make clear the reason with assistance of the plant species expert. After taking into account the distance from the range of standard deviation of HD and the advice of our expert and examiner, we estimate whether we can evaluate DUS in this growing trial.

We can evaluate DUS. → Go to step 2

We can't evaluate DUS. → Re-test

2.4.4 **【Step 2: Check whether the characteristic is combined characteristic or not】**

2.4.4.1 The purpose of step 2 is to decide which method, the proportional method or the sliding method, is more suitable for the characteristic. In the proportional method, range and interval of notes are adjusted at once. In the sliding method, range is adjusted on the one hand and interval is not changed. It means that the proportional method is not suitable for the characteristics that need fixed interval. In the concrete, the combined characteristics are generally stable than other characteristics and they need fixed interval. In such case, the sliding method is applied.

2.4.4.2 Characteristic “length of leaf blade”

It is not the combined characteristic. → Go to step 3-1

2.4.4.3 Characteristic “Leaf: ratio length/width”

It is the combined characteristic. → Go to step 3-2

2.4.5 **【Step 3-1: Adjustment FAT with the proportional method】**

2.4.5.1 We calculate the proportion of the measured data in this time to the mean of the historical data about an example variety. FAT multiplied by the proportion gives the adjusted table of assessment in this time.

2.4.5.2 The examples are as follows.  
Characteristic “ length of leaf blade”  
PD: 70.3mm  
HD: 74.0mm  
Proportion (PD/HD) =0.95

2.4.5.3 The upper line of Figure 2 is FAT expressed in a number line. FAT multiplied 0.95 gives the adjusted table of assessment of this time, the lower line.

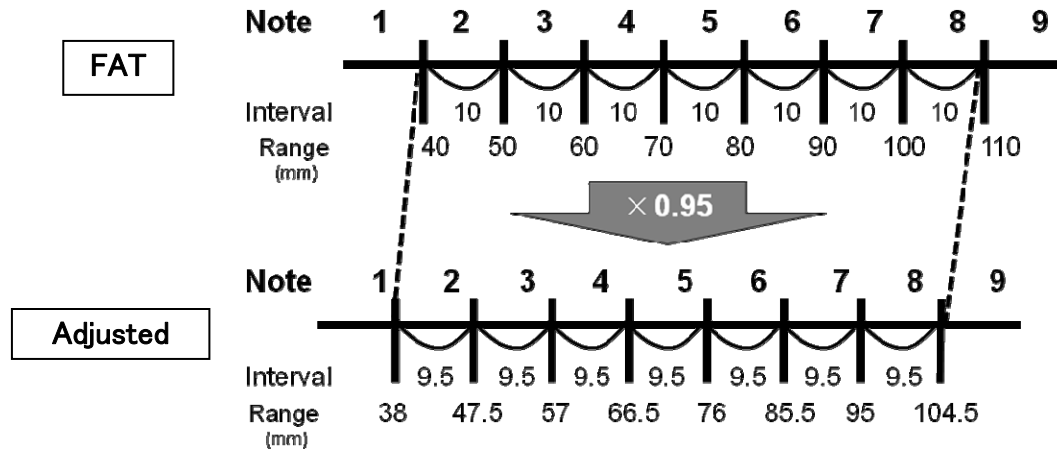


Fig.2: Adjustment FAT with the proportional method

2.4.5.4 We take the note 5 as an example,  
The minimum of the range is 70. 70 multiplied by 0.95 make 66.5.  
The maximum of the range is 80. 80 multiplied by 0.95 make 76.  
The interval of the note 5 changes from 10 to 9.5.

#### 2.4.6 【Step 3-2: Adjustment FAT with the sliding method】

2.4.6.1 We do subtraction the mean of the historical data from the measured data in this time about an example variety. FAT added to the difference is the adjusted table of assessment in this year.

2.4.6.2 The examples are as follows.  
Characteristic “Leaf: ratio length/width”  
PD of the example variety of the note 5 (EV) is 1.16.

2.4.6.3 The upper line of Figure 3 is FAT expressed in a number line. PD of EV, 1.16 is allocated in the note 4 in FAT. We should adjust FAT as the median of the note 5 becomes the same value to PD of EV, 1.16. FAT subtracted 0.19 gives the table of assessment of this time, the lower line.

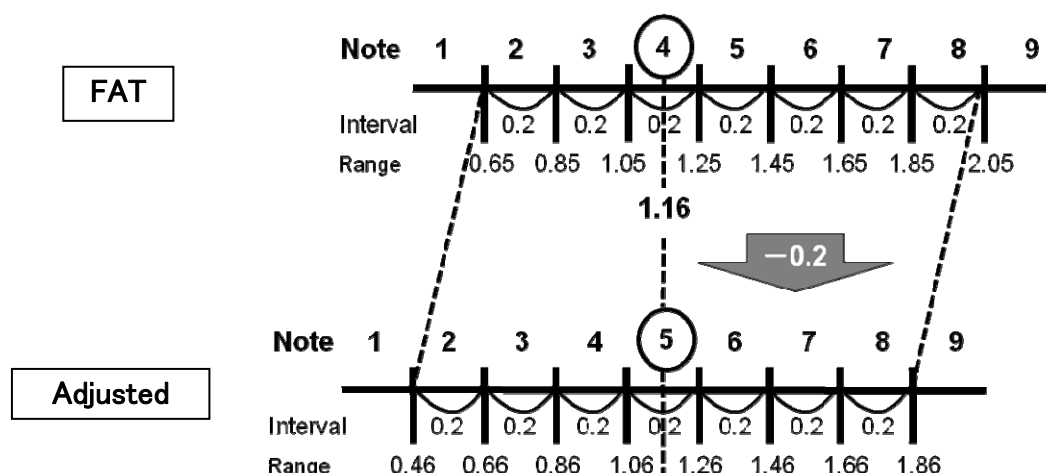


Fig.3: Adjustment FAT with the sliding method

2.4.6.4 We take “the note 5” as an example.

The minimum of the range  $1.25 - 0.19 = 1.06$ .

The maximum of the range  $1.45 - 0.19 = 1.26$ .

The interval is not adjusted.

The median of the note 5 = PD of EV, 1.16.

2.4.6.5 Generally, there are several example varieties in a characteristic. But we select one example variety from them for adjustment of FAT. We basically use the least variable example variety during many years’ DUS growing trials about each characteristic.

## 2.5 [Difference between self-pollinated varieties and cross-pollinated varieties]

2.5.1 We use the same method to self-pollinated varieties and cross-pollinated varieties. But the adjustable range changes according to dispersion of HD of example variety. Because our methods are based on the data of example variety, the propagation type of example variety is automatically reflected in the adjustable range.

2.5.2 Table 2 shows the example data. In general, there is tendency that the dispersion of the self-pollinated varieties is lower than that of the cross-pollinated varieties. In this example, HD of two varieties is the same. But the dispersion of self-pollinated varieties example variety is lower than that of cross-pollinated varieties.

Table 2: Example data of self-pollinated example variety and cross-pollinated example variety

Trial number	1 <sup>st</sup>	2 <sup>nd</sup>	3 <sup>rd</sup>	4 <sup>th</sup>	5 <sup>th</sup>	6 <sup>th</sup>	7 <sup>th</sup>	8 <sup>th</sup>	9 <sup>th</sup>	10 <sup>th</sup>	Historical Data(HD)	Dispersion	Standard deviation	Coefficient of variance
Self E.V.	80	84	81	83	86	88	83	80	87	88	84.0	9.78	3.13	11.64
Cross E.V.	75	84	74	83	87	96	84	75	88	94	84.0	59.11	7.69	70.37

\*E.V.is example variety

2.5.3 Figure 4 shows the normal curve of two varieties of different propagating type. The curve of self-pollinated example variety is narrower than that of cross-pollinated example variety. As I said earlier, if the data of this year is in the range of standard deviation, we can adjust FAT. Therefore, the adjustable range of self-pollinated varieties becomes narrower than that of cross-pollinated ones automatically.

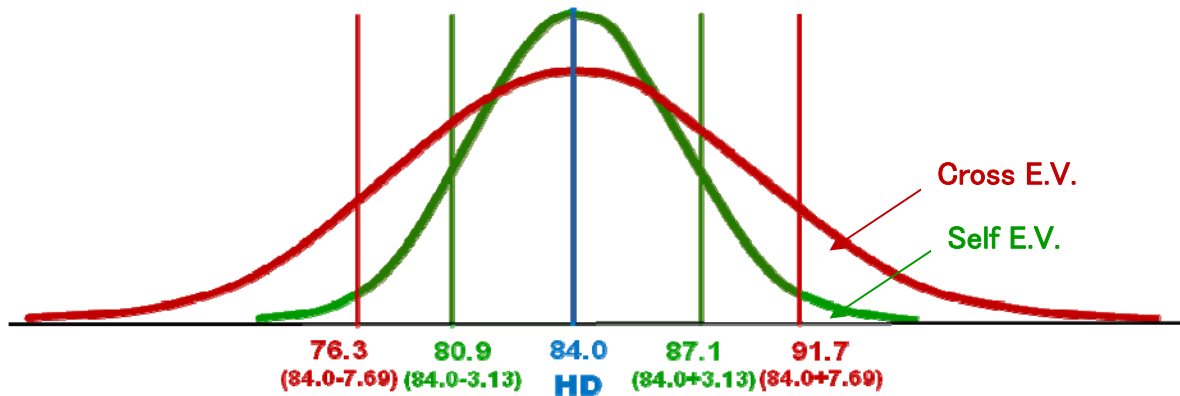


Fig.4: Normal curve of self-pollinated example variety (Self EV) and cross-pollinated example variety (Cross EV)

### 3. Conclusions

3.1 We have two methods to adjust FAT. One is the proportional method, and the other is the sliding method. In the proportional method, we calculate the proportion of the measured data in this time to the mean of the historical data (HD) about example variety. FAT multiplied by the proportion is the adjusted table of assessment in this time. The sliding method is applied to the characteristics that need fixed interval. We do subtraction the mean of the HD from the measured data in this time about example variety. We can get the adjusted table of assessment in this time by adding the difference to FAT.

3.2 We use the same method to self-pollinated varieties and cross-pollinated varieties to assess the quantitative characteristics. The difference between self-pollinated varieties and cross-pollinated varieties is the allowable range of the value of PD to estimate whether we can adjust the FAT or not. The adjustable range changes according to dispersion of HD of an example variety. Generally, the adjustable range of self-pollinated varieties becomes narrower than that of cross-pollinated varieties because the dispersion of the former is narrower than that of latter. Because our methods are based on the enough experimental data of example variety, the dispersion of HD according to the propagation type of example variety is automatically reflected in the adjustable range.

[Annex IX follows]

**TGP/8 PART II: TECHNIQUES USED IN DUS EXAMINATION**

*New Section - Guidance of data analysis for blind randomized trials (Drafters: France and Israel to provide examples)*

*Notes*

44. Comments: proposed by the TC at its forty-fifth session.

[Annex X follows]



**TGP/8 PART II: TECHNIQUES USED IN DUS EXAMINATION**

*New Section - Statistical methods for visually observed characteristics (Drafter to be agreed)*

*Notes*

45. Comments: the TC at its forty-sixth session requested the TWC to investigate this subject for possible inclusion in the revision of document TGP/8.

[Annex XI follows]

**TGP/8 PART II: TECHNIQUES USED IN DUS EXAMINATION**

*New Section - Guidance for the development of variety descriptions (Drafter to be agreed)*

*Notes*

46. Comments: the TC at its forty-sixth session requested that, in the revision of document TGP/8, consideration should be given to guidance on the development of variety descriptions with information from:

- (i) more than one growing cycle in one location, and
- (ii) more than one location

47. In the establishment of guidance for the development of variety descriptions, the Technical Working Parties (TWPs) are invited to consider the discussions at the CAJ in respect to the status and use of the “official” variety description (see document CAJ/61/8, paragraphs 1, 2 and 6 and the examples provided in the annexes to this document)

[Annex XII follows]

**TGP/8 PART II: TECHNIQUES USED IN DUS EXAMINATION**

Section 4 – 2x1 % Method - Minimum number of degrees of freedom for the 2x1% Method  
(Drafter to be agreed)

*Notes*

48. The TWC at its twenty-seventh session proposed to are commendation in the number of degrees of freedom for the 2x1% Method of at least 10, and preferably at least 20, degrees of freedom. The TC at its forty-sixth session agreed not to include the recommendation in document TGP/8/1 and that the proposal of the TWC be further discussed for a future revision of document TGP/8.

[Annex XIII follows]

**TGP/8 PART II: TECHNIQUES USED IN DUS EXAMINATION**

*Section 9 - The Combined-Over-Years Uniformity Criterion (COYU) - Minimum number of degrees of freedom for COYU (Drafter to be agreed)*

*Notes*

49. The TWC at its twenty-seventh session proposed to change the recommendation in the minimum number of degrees of freedom for COYU to “there should be at least 10, and preferably at least 20, degrees of freedom for the varieties-by-years mean square in the COYD analysis of variance, or if there are not, then Long-Term COYD can be used”. The TC at its forty-sixth session agreed to maintain the previous recommendation of 20 degrees of freedom and to consider the proposal of the TWC for a future revision of document TGP/8.

[Annex XIV follows]

**TGP/8 PART II: TECHNIQUES USED IN DUS EXAMINATION**

*Section 10 – Minimum number of comparable varieties for the Relative Variance Method (Drafter: Nik Hulse (Australia)).*

*Notes*

50. The TC at its forty-sixth session agreed that a recommendation on the minimum number of comparable varieties to be included in the trial in the Relative Variance Method be included in a revision of document TGP/8.

[Annex XV follows]

TC/47/20  
ANNEX XV

Title of document		2011						2012						2013					
		TC-EDC	TC/47	CAJ/63	TWPs	CAJ/64	C/45	TC-EDC	TC/48	CAJ/65	TWPs	CAJ/66	C/46	TC-EDC	TC/49	CAJ/67	TWPs	CAJ/68	C/47
<b>TGP/8 PART I: DUS TRIAL DESIGN AND DATA ANALYSIS</b>																			
Annex I	New Section 2 - Data to be recorded ( <i>Drafter: Mr. Uwe Meyer (Germany)</i> )				x						x								
Annex II	New Section 3 - Control of variation due to different observers ( <i>Drafter: Mr. Gerie van der Heijden (Netherlands)</i> )				x						x								
Annex III	New Section 6 – Data processing for the assessment of distinctness and for producing variety descriptions ( <i>Drafters: experts from Finland, France, Germany, Japan, Kenya and the United Kingdom</i> )				x						x								
Annex IV	New Section – Information of good agronomic practices for DUS field trials ( <i>Drafters: Mrs. Anne Weitz (European Union) and Argentina and France to contribute[1]</i> )				x						x								
<b>TGP/8 PART II: TECHNIQUES USED IN DUS EXAMINATION</b>																			
Annex V	Section 1: The GAIA Methodology New Section after Section COYU Statistical Methods for Very Small Sample Sizes ( <i>Drafter: Mr. Gerie van der Heijden (Netherlands)</i> )				x						x								
Annex XII	Section 4 – 2x1 % Method - Minimum number of degrees of freedom for the 2x1% Method ( <i>Drafter: Mrs. Sally Watson (United Kingdom)[2]</i> )				x						x								
	Section 5: Pearson's Chi Square Test Applied to Contingency Tables				x						x								
Annex XIII	Section 9 - The Combined-Over-Years Uniformity Criterion (COYU) - Minimum number of degrees of freedom for COYU ( <i>Drafter: Mrs. Sally Watson (United Kingdom)[3]</i> )				x						x								
Annex XIV	Section 10 – Minimum number of comparable varieties for the Relative Variance Method ( <i>Drafter: Nik Hulse (Australia)</i> )				x						x								
Anex VI	New Section 11 Examining DUS in bulk samples ( <i>Drafter: Mr. Kristian Kristensen (Denmark)</i> )				x						x								
Annex VII	New Section 12 - Examining characteristics using image analysis ( <i>Drafter: Mr. Gerie van der Heijden (Netherlands)</i> )				x						x								
Annex VIII	New Section 13 - Methods for data processing for the assessment of distinctness and for producing variety descriptions: ( <i>Drafters: Finland, France, Germany, Japan, Kenya and the United Kingdom</i> )				x						x								
Annex IX	New Section - Guidance of data analysis for blind randomized trials ( <i>Drafter: France<sup>[4]</sup> and Israel<sup>[5]</sup> to provide examples</i> )				x						x								
Annex X	New Section - Statistical methods for visually observed characteristics ( <i>Drafter: Denmark, France and the United Kingdom<sup>2</sup></i> )				x						x								
Annex XI	New Section - Guidance for the development of variety descriptions ( <i>Drafter to be agreed</i> )				x						x								

Sections that will go for adoption by the Council in 2013

Sections that will go for adoption by the Council in 2013

Sections that will go for adoption by the Council in 2013

Sections that will go for adoption by the Council in 2013

Sections that will go for adoption by the Council in 2013

Adoption of TGP/8/2

[1] Offer made at the 39th TWA Session  
[2] Agreed by the TWC at its 28th Session  
[3] Agreed by the TWC at its 28th Session  
[4] Agreed at the TWZ at its 39th Session  
[5] Agreed at the TWV at its 44th Session

ENDNOTES

- i TWC: to be edited
- ii TWC: to be edited
- iii Rewording proposed by TWC
- iv Rewording proposed b TWC
- v Section drafted by Mr. Gerie van der Heijden (Netherlands)
- vi TWA and TWC agreed to move Section III “Examination of characteristics using image analysis” from TGP/12 to TGP/8

[End of document]