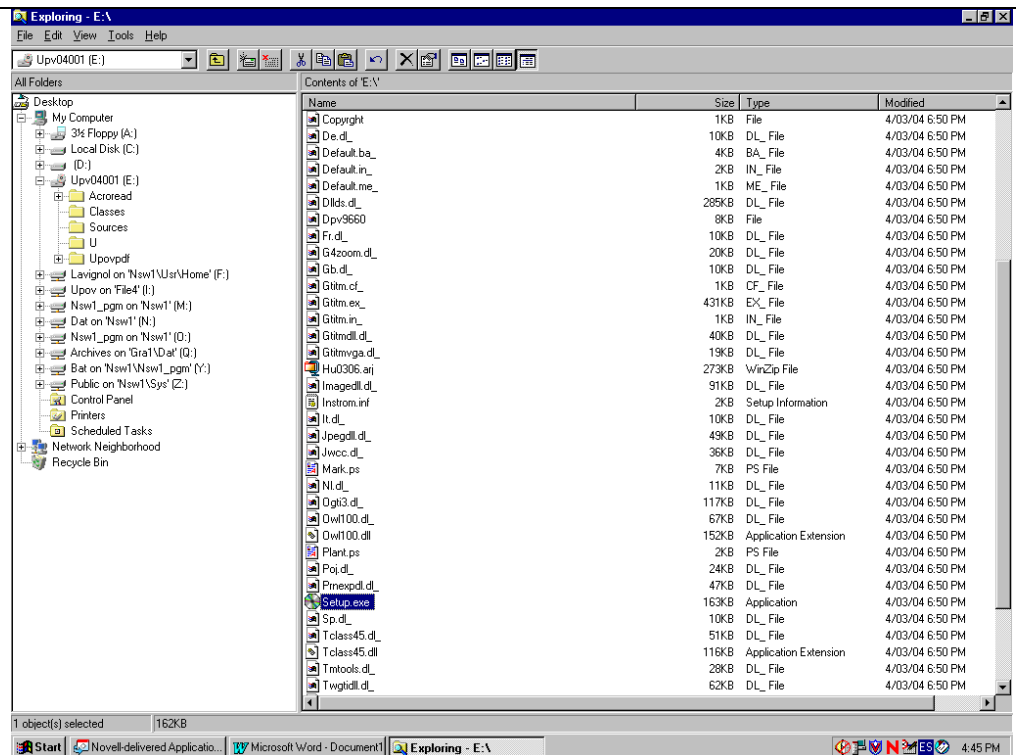


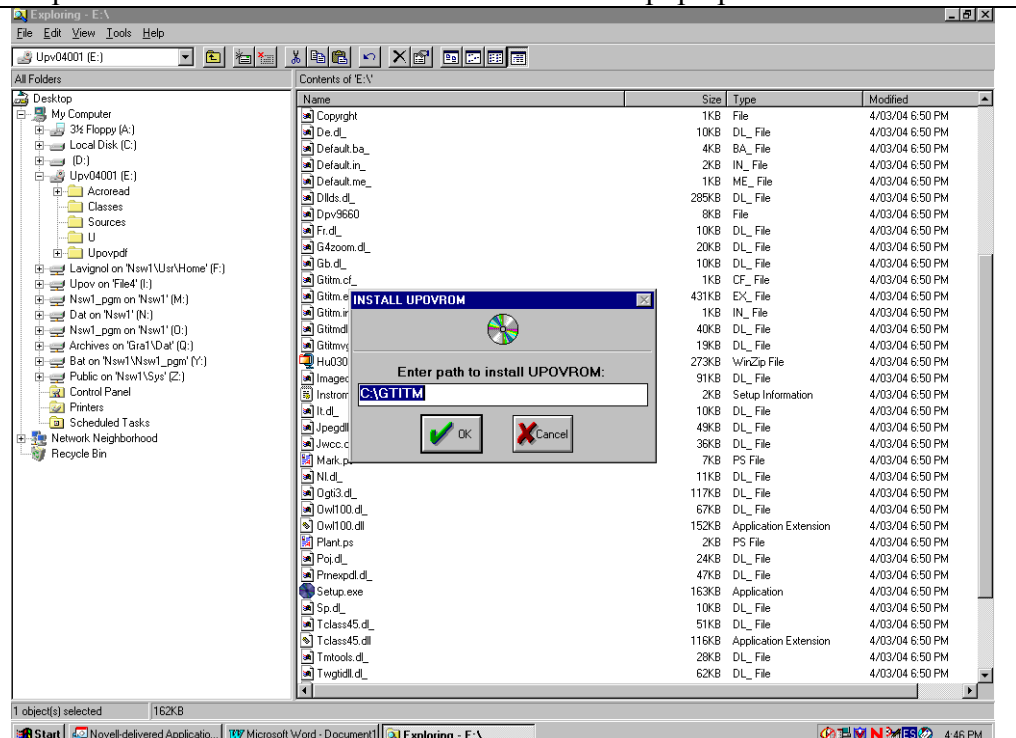
# HOW TO INSTALL THE UPOV CD-ROM

Step 1 – Put the CD into the CD drive on your computer

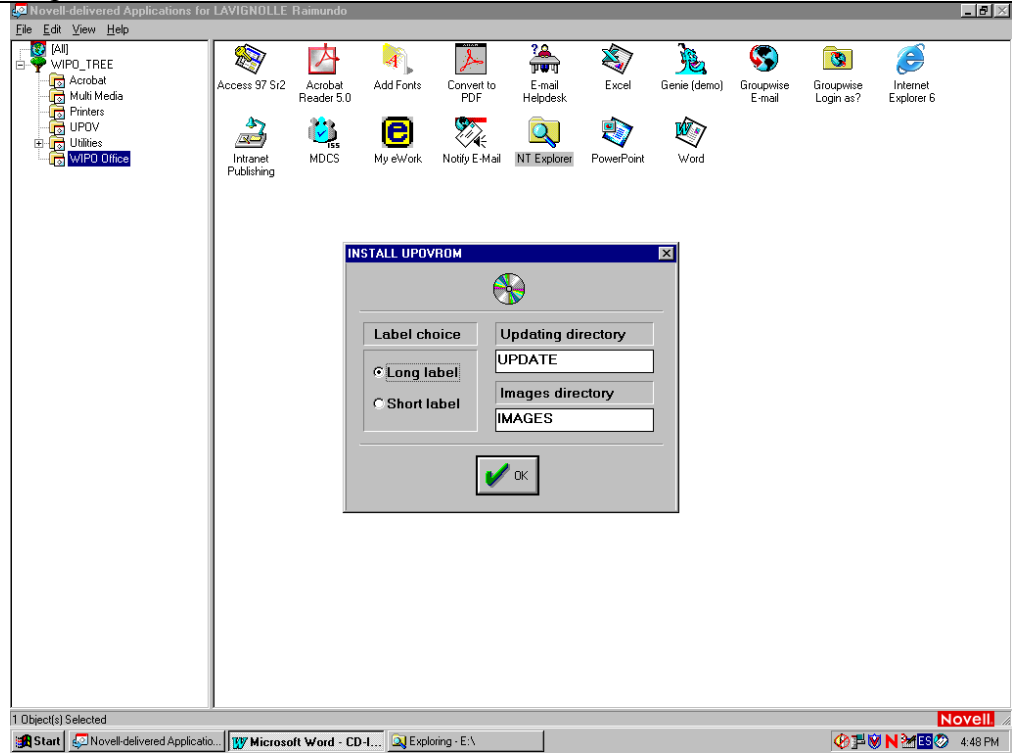
Step 2 – Using the explorer, OPEN the CD drive on your computer  
(This may vary for each computer – in our case drive: e:/)  
and DOUBLE CLICK on the ‘Setup.exe’ file



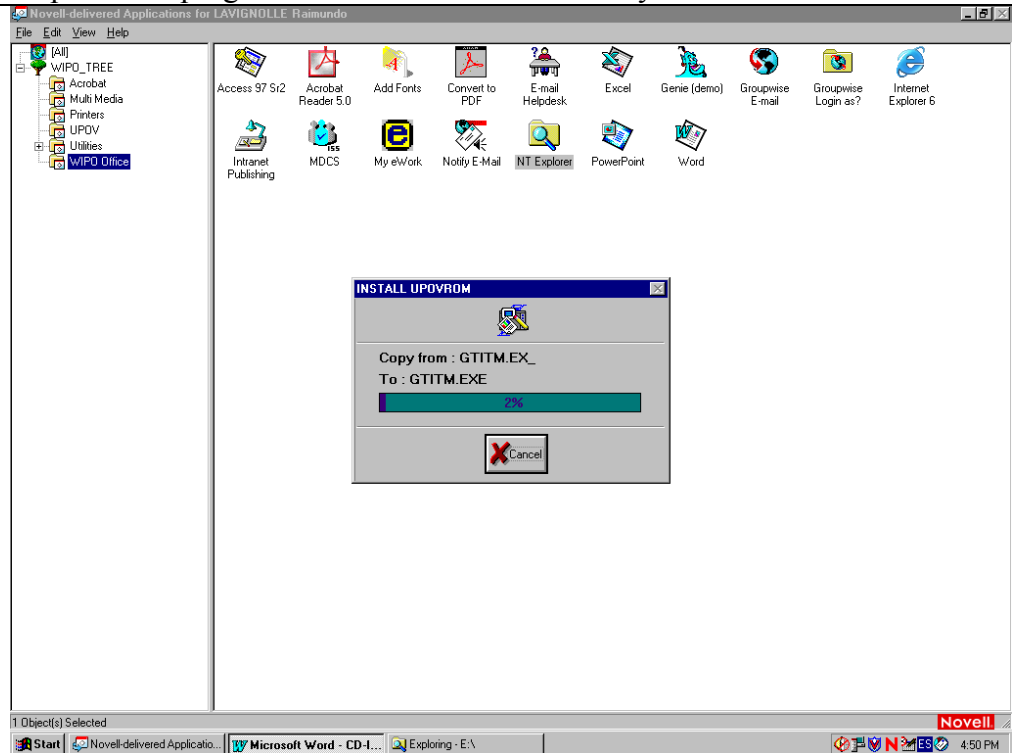
Step 3 – The window “Install UPOV-ROM” will pop up - Click OK



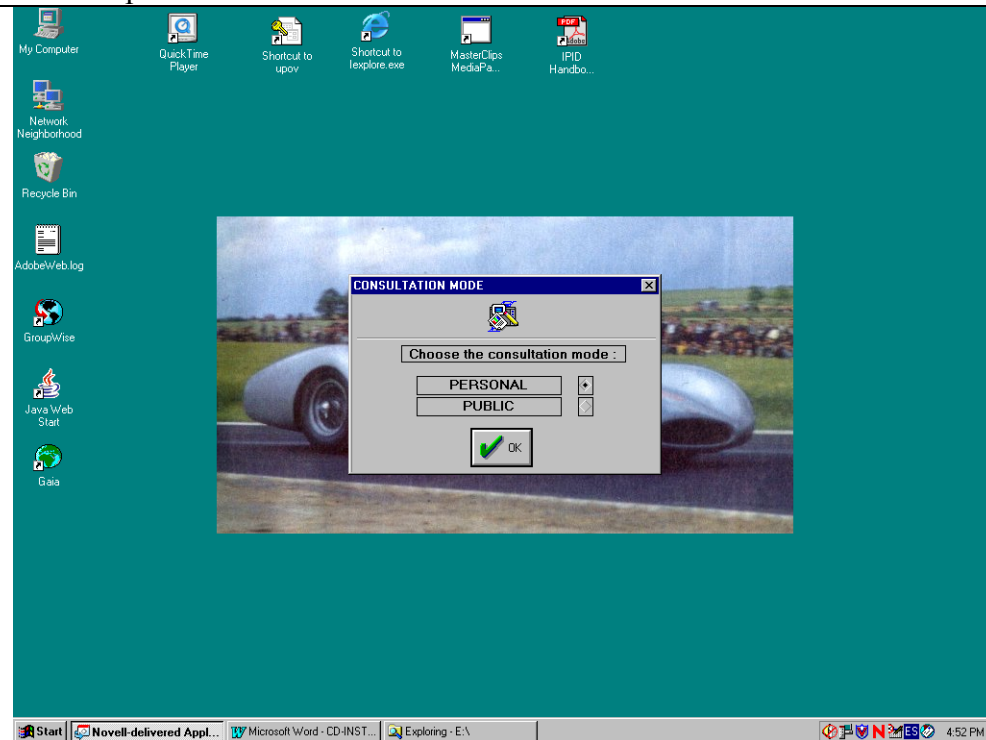
## Step 4 – Continue to CLICK OK



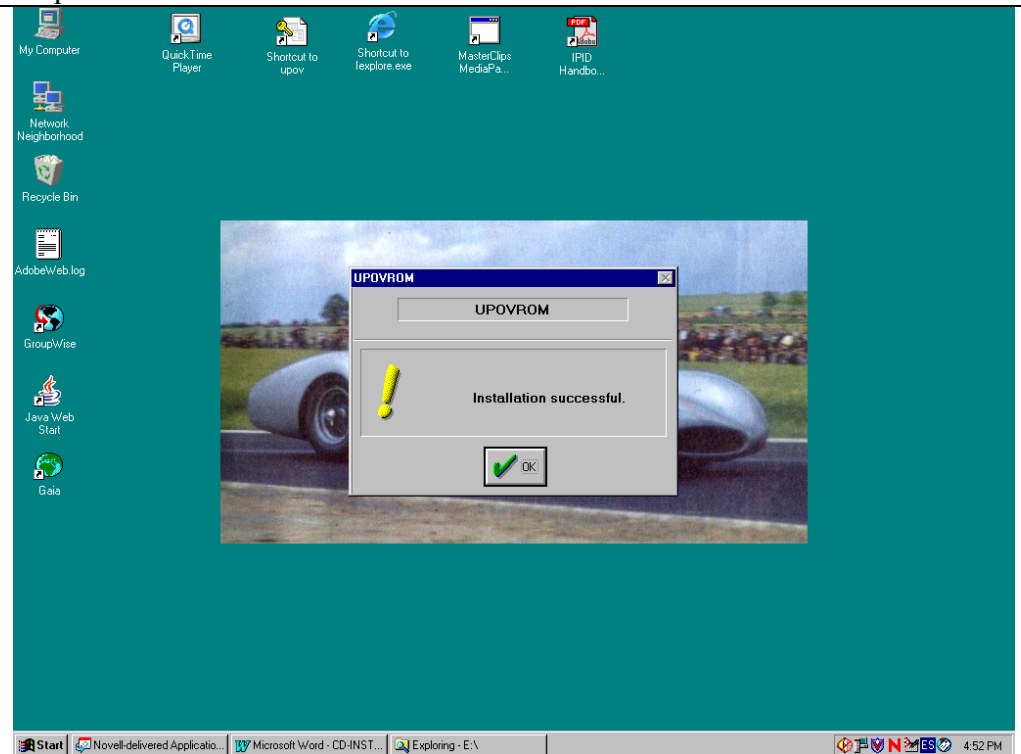
## Step 5 – The program will now be installed onto your c:\ drive



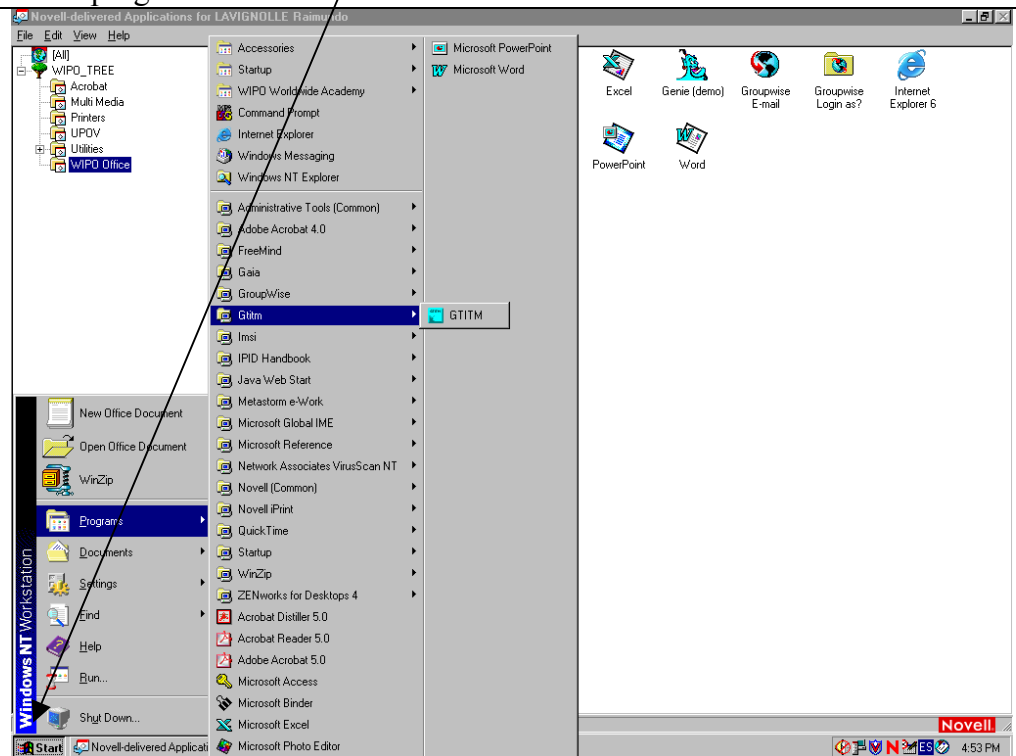
Step 6 – The consultation mode window will pop up on your desktop with default option “Personal” - Click OK



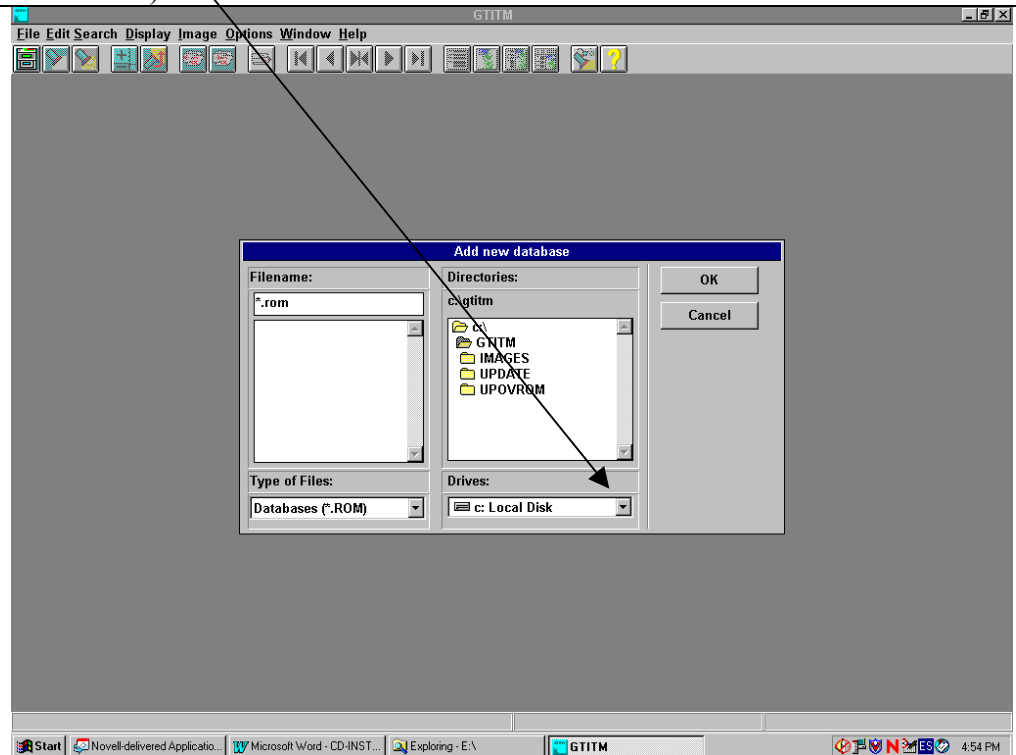
Step 7 – Continue to click OK



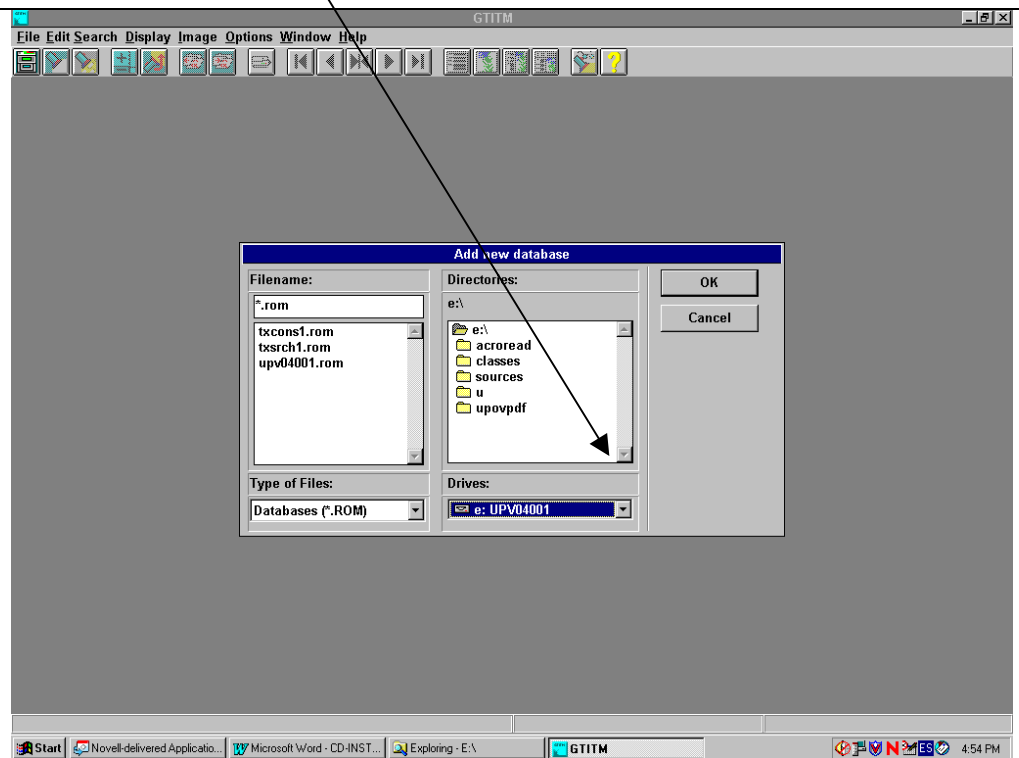
## Step 8 - Open the program 'GTITM' using your Start menu/programs/GTITM



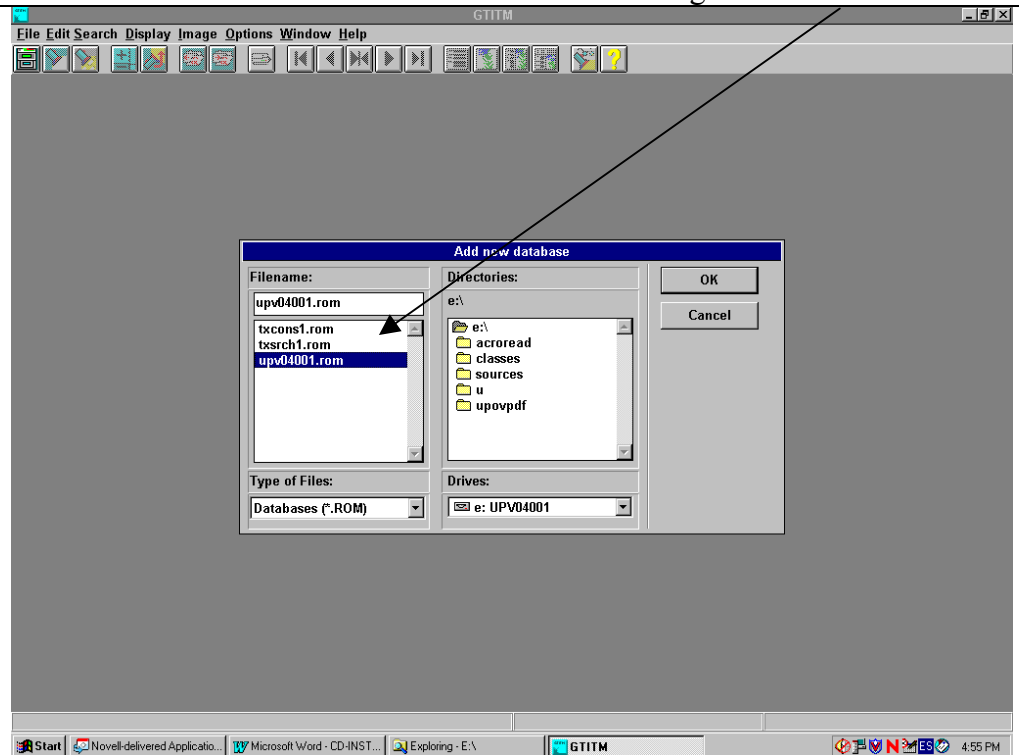
Step 9 – When this screen appears, select the drive in which you have the CD (change from the default drive to the same drive as in Step 2 above – drive e:/ in our case)



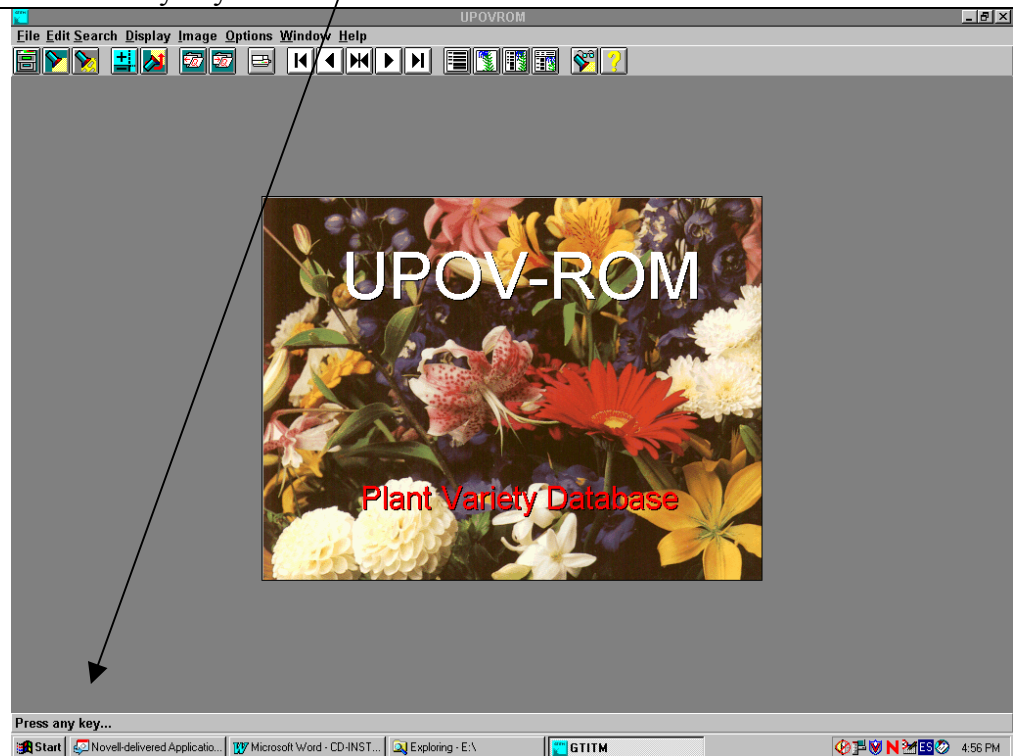
Step 10 - Change from the default drive to the same drive as in Step 2 above – (drive e:/ in our case)



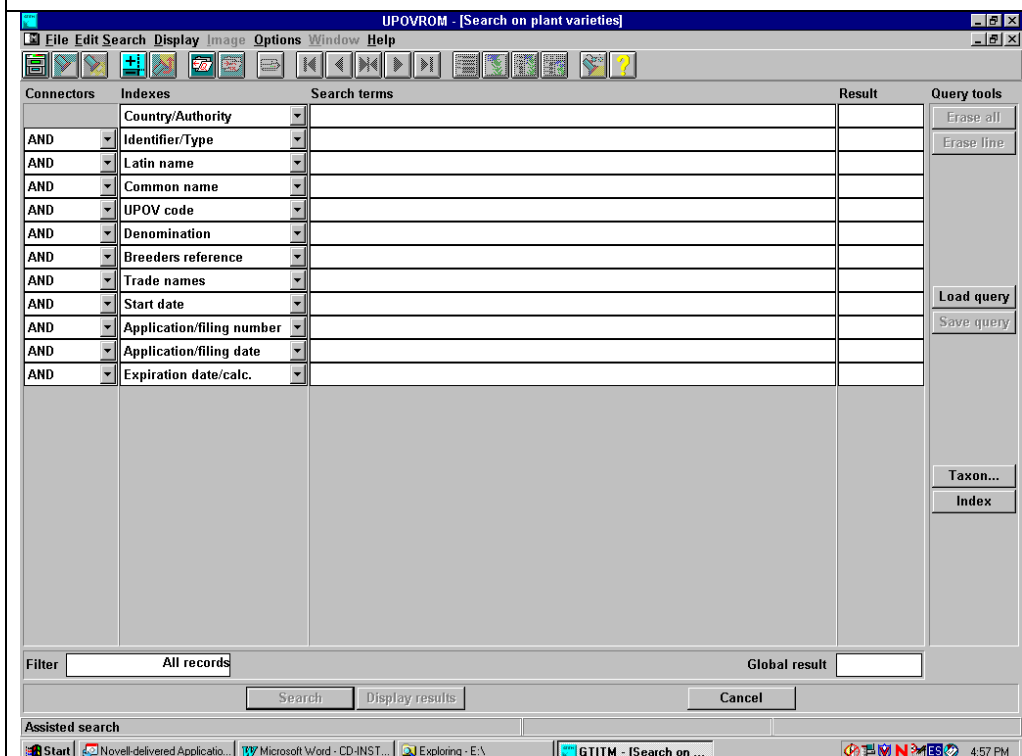
Step 11 - Select **upv04001.rom** (the actual database on the CD-ROM) and click OK. The name of the actual database will change with each version.



Step 12 – You are now in the UPOV-ROM Database  
Click on any key to start



Step 13 – You are now ready to start your search



## Possible problems

We have been notified of certain problems after the installation of the UPOV-ROM. Depending on the systems and material used in your office, you may receive, for example, the following messages:

- "SETUP caused segment load failure..."

or also

- "GTITL caused a general Protection Fault in module PRNEXPDL.DLL at 000F:0919"

Solutions also vary. However, it relates to the DEFAULT PRINTER your computer is connected to. Try connecting it to another printer than the one currently assigned. For example, if your computer is connected to a NETWORK printer, try selecting a LOCAL printer (any, even pdf maker, would work) as DEFAULT printer. Paradoxally, it might be the opposite. In another case, the computer had to be connected to a NETWORK printer for GTITM to work.

Please do not hesitate to contact the Office of the Union if you experience further problems with the UPOV-ROM. ([upov.mail@upov.int](mailto:upov.mail@upov.int))