



TG/188/1

INTERNATIONAL UNION
FOR THE PROTECTION
OF NEW VARIETIES OF
PLANTS

UNION INTERNATIONALE
POUR LA PROTECTION
DES OBTENTIONS
VÉGÉTALES

INTERNATIONALER
VERBANDZUMSCHUTZ
VON PFLANZEN -
ZÜCHTUNGEN

UNIÓN INTERNACIONAL
PARA LA PROTECCIÓN
DE LAS OBTENCIONES
VEGETALES

GUIDELINES
FOR THE CONDUCT OF TESTS
FOR DISTINCTNESS, UNIFORMITY AND STABILITY

CELOSIA

(Celosia L.)

GENEVA
2002

Copies of this document are available on request at the price of 10 Swiss francs each, including surface mail, from the Office of UPOV, 34, chemin des Colombettes, P.O. Box 18, 1211 Geneva 20, Switzerland

This document or parts of it may be reproduced, translated and published without obtaining the specific consent of UPOV, provided that the source is acknowledged.



TG/188/1

ORIGINAL: English

DATE: 2002-04-17

INTERNATIONAL UNION
FOR THE PROTECTION
OF NEW VARIETIES OF
PLANTS

UNION INTERNATIONALE
POUR LA PROTECTION
DES OBTENTIONS
VÉGÉTALES

INTERNATIONALER
VERBAND ZUM SCHUTZ
VON PFLANZEN -
ZÜCHTUNGEN

UNIÓN INTERNACIONAL
PARA LA PROTECCIÓN
DE LAS OBTENCIONES
VEGETALES

GUIDELINES
FOR THE CONDUCT OF TESTS
FOR DISTINCTNESS, UNIFORMITY AND STABILITY

CELOSIA

(Celosia L.)

These Guidelines should be read in conjunction with document TG/1/2, which contains explanatory notes on the general principles on which the Guidelines have been established.

<u>TABLEOFCONTENTS</u>	<u>PAGE</u>
I. SubjectoftheseGuidelines	3
II. MaterialRequired	3
III. ConductofTests	3
IV. MethodsandObservations	5
V. GroupingofVarieties	5
VI. CharacteristicsandSymbols	6
VII. TableofCharacteristics	7
VIII. ExplanationsontheTableofCharacteristics	16
IX. Literature	18
X. TechnicalQuestionnaire	19

I. Subject of these Guidelines

These Test Guidelines apply to all varieties of *Celosia* L. of the family Amaranthaceae.

II. Material Required

1. The competent authorities decide when, where and in what quantity and quality the plant material required for testing the variety is to be delivered. Applicants submitting material from a State other than that in which the testing takes place must make sure that all customs formalities are complied with. As a minimum, the following quantity of material is recommended:

vegetatively propagated varieties: 50 rooted cuttings;

seed propagated varieties: 2 grams of seed.

2. In the case of seed, the seed should meet the minimum requirements for germination, species and analytical purity, health and moisture content, specified by the competent authority. In cases where the seed is to be stored, the germination capacity should be as high as possible and should be stated by the applicant.

3. The material supplied should be visibly healthy, not lacking in vigor or affected by any important pests or diseases.

4. The plant material must not have undergone any treatment unless the competent authorities allow or request such treatment. If it has been treated, full details of the treatment must be given.

III. Conduct of Tests

1. The tests should normally be conducted over one growing cycle. If the examination cannot be completed in one growing cycle, the test should be extended for a second growing cycle.

2. The test should normally be conducted at one place. If any important characteristics of the variety cannot be seen at that place, the variety may be tested at an additional place.

3. The test should be carried out in the greenhouse under the following growing conditions:

Seedpropagatedvarieties :

Sowingmethod: Preferably direct seeding (because of taproot)

Forgermination,seedsshouldbelightlycoveredwithvermiculite.

Immediatelyaftersowing:

Temperature: 22-24°C.
Ventilationtemperatu re: Dayca.27°C,nightca.32°C.

Afterca.1week:

Temperature: Dayca.20°C,nightca.17°C.
Ventilationtemperatureduringtheday: Ca.21 -32°C.
Ventilationtemperatureduringthenight: Ca.18°C.
Humidity: 90-95%.
Thetoplayerofthesoilmustbe keptmoist.

Afterca.2to3weeks:

Temperature: Dayca.19°C,nightca.17°C.
Ventilationtemperature: Dayca.20°C,nightca.18°C.
Humidity: Ca.80 -85%.

6to8weeksaftersowing:

Temperature: Dayca.16°C,nightca.15°C.
Ventilationtemperature: Dayca.17°C,nightca.16°C.
Humidity: Ca.80 -85%.

Vegetativelypropagatedvarieties :

Temperature: Immediately after planting, ca. 20°C to 25°C,slowlydecreasingtoca.16°C.
Humidity: Ca.80 -85%.

General:

Irrigation should be provided by overhead sprinkling until the flowers appear.

After appearance of the flowers, the soil should be kept drier and sprinkling should be stopped to reduce the risk of botrytis infection.

Base fertilization: None.

Fertilization during growth: None.

Substrate: Poor substrate, well drained.

Plant spacing: Ca. 32 pl/m²,
max. 64 pl/m²

Shading: None, Celosia is very photo -sensitive.

Most Celosia varieties need to be supported by 2 to 3 layers of wire netting.

4. The size of the plots should be such that plants or parts of plants may be removed for measurement and counting without prejudice to the observations which must be made up to the end of the growing cycle. Each test should be designed to result in a total of at least 50 plants. Separate plots for observation and for measuring should only be used if they have been subject to similar environmental conditions.
5. Additional tests for special purposes may be established.

IV. Methods and Observations

1. All observations determined by measurement or counting should be made on 10 plants or part taken from each of 10 plants.
2. Celosia is self -pollinating, and the rules for assessment of uniformity in seed propagated varieties are the same as for vegetatively propagated varieties. For the assessment of uniformity a population standard of 1% with an acceptance probability of at least 95% should be applied. In the case of a sample size of 50 plants, the maximum number of off -types allowed would be 2.
3. Unless otherwise indicated, all observations should be made on plants with a full -grown inflorescence. All observations on the leaf should be made on a full -grown leaf, located at the middle third of the stem and all observations on the flowers should be made at the beginning of anther dehiscence.
4. Because day light varies, color determinations made against a color chart should be made either in a suitable cabinet providing artificial daylight or in the middle of the day in a room without direct sunlight. The spectral distribution of the illuminant for artificial daylight should conform with the CIE Standard of Preferred Daylight D 6500 and should fall within

the tolerance set out in British Standard 950, Part I. These determinations should be made with the plant part placed against a white background.

V. Grouping of Varieties

1. The collection of varieties to be grown should be divided into groups to facilitate the assessment of distinctness. Characteristics which are suitable for grouping purposes are those which are known from experience not to vary, or to vary only slightly, within a variety. Their various states of expression should be fairly evenly distributed throughout the collection.

2. It is recommended that the competent authorities use the following characteristics for grouping varieties:

- (a) Inflorescence: color (characteristic 24)

VI. Characteristics and Symbols

1. To assess distinctness, uniformity and stability, the characteristics and their states as given in the Table of Characteristics should be used.

2. Notes (numbers), for the purposes of electronic data processing, are given opposite the states of expression for each characteristic.

3. Legend:

(*) Characteristics that should be used on all varieties in every growing cycle over which examinations are made and always be included in the variety descriptions, except when the state of expression of a preceding characteristic or regional environmental conditions render this impossible.

(+) See Explanations on the Table of Characteristics in Chapter VIII.

VII. Table of Characteristics/Tableau des caractères/Merkmalstabelle/Tablades caracteres

English	français	deutsch	español	Example Varieties Exemples Beispielssorten Variedades ejemplo	Note/ Nota
1. Plant:height (*)	Plante:hauteur	Pflanze:Höhe	Planta:altura		
very short	très basse	sehr niedrig	muy baja	Super Dwarf Kimono Orange	1
short	basse	niedrig	baja	Century Rose	3
medium	moyenne	mittel	media	Martine	5
tall	haute	hoch	alta	Bombay	7
very tall	très haute	sehr hoch	muy alta		9
2. Stem:thickness (*)	Tige:grosueur	Stiel:Dicke	Tallo:espesor		
thin	fine	dünn	delgado	Yellow Flame	3
medium	moyenne	mittel	medio	Bombay Gold	5
thick	grosse	dick	grueso	Boscor sun	7
3. Stem:presence of anthocyanin coloration at base (*)	Tige:présence de pigmentation anthocyanique à la base	Stiel: Vorhandensein von Anthocyanfärbung ander Basis	Tallo:presencia de pigmentación antociánica en la base		
absent	absente	fehlend	ausente	Yellow Flame	1
present	présente	vorhanden	presente	Bombay, Purple Martine	9
4. Stem:intensity of anthocyanin coloration at base (*)	Tige:intensité de la pigmentation anthocyanique à la base	Stiel: Intensität der Anthocyanfärbung ander Basis	Tallo: intensidad de la pigmentación antociánica en la base		
very weak	très faible	sehr gering	muy débil	Bombay Yellow, Yellow Flame	1
weak	faible	gering	débil	Bombay Gold	3
medium	moyenne	mittel	media	Boscor cass	5
strong	forte	stark	fuerte	Bombay, Bombay Purple	7
very strong	très forte	sehr stark	muy fuerte	Enterprise Wine -red	9

English	français	deutsch	español	Example Varieties Exemples Beispielssorten Variedadesejemplo	Note/ Nota
5. Stem:colorofbasal part (*)	Tige:couleurdela partiebasale	Stiel:Farbedes basalenTeils	Tallo:colordela partebasal		
lightgreen	vertclair	hellgrün	verdeclaro	EnterpriseWhite	1
mediumgreen	vertmoyen	mittelgrün	verdemedio		2
darkgreen	vertfoncé	dunkelgrün	verdeoscuro		3
yellow	jaune	gelb	amarillo	Celrayel,MartineSalmon	4
orange	orange	orange	naranja	BombaySalmon,Super DwarfKimonoOrange	5
pinkishred	rougero sé	blaßrosarot	rojorosáceo	SuperDwarfKimono Cherry-red	6
purplered	rougepourpre	purpurrot	rojopúrpura	Celkopured, EnterpriseWine -red	7
6. Stem:colorofupper part (*)	Tige:couleurdela partiesupérieure	Stiel:Farbedes Oberteils	Tallo:colordela partesuperior		
lightgreen	vertclair	hellgrün	verdeclaro	BombayRose,Celrayel	1
mediumgreen	vertmoyen	mittelgrün	verdemedio	MartineSalmon	2
darkgreen	vertfoncé	dunkelgrün	verdeoscuro		3
yellow	jaune	gelb	amarillo		4
orange	orange	orange	naranja		5
pinkishred	rougerosé	blaßrosarot	rojorosáceo	Celkopured	6
purplered	rougepourpre	purpurrot	rojopúrpura	SuperDwarfKimonoRed	7
7. Stem:shapeincross section (*)	Tige:formedela sectiontransversale	Stiel:Formim Querschnitt	Tallo:formadela seccióntransversal		
circular	arrondie	rund	circular	EnterpriseWhite	1
flattened	aplatie	abgeflacht	aplanada	Boscorcass	2
8. Stem:ribs (*)	Tige:côtes	Stiel:Rippen	Tallo:acostillado		
absent	absentes	fehlend	ausente	MartinePink, Startreklilac	1
present	présentes	vorhanden	presente		9

English	français	deutsch	español	Example Varieties Exemples Beispielssorten Variedadesejemplo	Note/ Nota
9. Stem:flowering (* laterals	Tige:rameaux florifèreslatéraux	Haupttrieb: blühende Seitentriebe	Tallo:floración lateral		
absent	absents	fehlend	ausente	BombayPink,Boscorsun	1
present	présents	vorhanden	presente	EnterpriseWhite, StartrekLilac	9
10. Petiole:length (*)	Pétiole:longueur	Blattstiel:Länge	Pecíolo:longitud		
short	court	kurz	corto	Celkopured	3
medium	moyen	mittel	medio	Bombay	5
long	long	lang	largo	EnterpriseWhite	7
11. Petiole:presenceof (* anthocyanin coloration	Pétiole:présencede pigmentation anthocyanique	Blattstiel: Vorhandenseinvon Anthocyanfärbung	Pecíolo:presenciade pigmentación antociánica		
absent	absente	fehlend	ausente	BombayRose,Celrayel	1
present	présente	vorhanden	presente	Caripe,Celkopured	9
12. Leafblade:length (*)	Limbe:longueur	Blattspreite:Länge	Limbo:longitud		
short	court	kurz	corto	BombayFire	3
medium	moyen	mittel	medio	Martine	5
long	long	lang	largo	BombayRose,Caripe	7
13. Leafblade:width (*)	Limbe:largeur	Blattspreite:Breite	Limbo:anchura		
narrow	étroit	schmal	estrecho	BombayFire	3
medium	moyen	mittel	medio	Bombay,Caripe,Martine, Salmon	5
broad	large	breit	ancho	BombayRose, EnterpriseWhite	7

English	français	deutsch	español	Example Varieties Exemples Beispielssorten Variedadesejemplo	Note/ Nota
14. Leafblade:shape (* (*)	Limbe:forme	Blattspreite:Form	Limbo:forma		
narrowelliptic	elliptiqueétroit	schmalelliptisch	elípticoestrecho	Sharon	1
elliptic	elliptique	elliptisch	elíptico	BombayRose	2
ovate	ovale	eiförmig	oval	BombayPurple	3
broadovate	ovalelarge	breiteiförmig	ovalancho		4
15. Leafblade:shapeof (*) (+) apex	Limbe:formedu somet	Blattspreite:Form derSpitze	Limbo:formadel ápice		
acute	aigu	spitz	agudo	Caripe,Sharon	1
shortacuminate	acuminéco urt	kurzzugespitzt	acuminadocorto	BombaySalmon	2
longacuminate	acuminélong	langzugespitzt	acuminadolargo	Celkopured	3
16. Leafblade:color (* (*)	Limbe:couleur	Blattspreite:Farbe	Limbo:color		
lightgreen	vertclair	hellgrün	verdeclaro	BombaySalmon, EnterpriseWhite	1
mediumgreen	vertmoyen	mittelgrün	verdemedio		2
darkgreen	vertfoncé	dunkelgrün	verdeoscuro	Celkopured	3
greenishred	rougeverdâtre	grünlichrot	rojoverdoso	FlamingoFeather	4
redpurple	pourprerouge	rotpurpur	púrpurarrojizo		5
17. Leafblade:presence (* (*) ofanthocyanin colorationofmain vein	Limbe:présencede pigmentation anthocyaniquedela nervureprincipale	Blattspreite: Vorhandenseinvon Anthocyanfärbung derHauptader	Limbo:presenciade pigmentación antociánicadel nervioprincipal		
absent	absente	fehlend	ausente	EnterpriseWhite	1
present	présente	vorhanden	presente	Celkopured	9

English	français	deutsch	español	Example Varieties Exemples Beispielssorten Variedadesejemplo	Note/ Nota
18. Leafblade: (* blistering	Limbe:cloûtre	Blattspreite: Blasigkeit	Limbo:abullonado		
absentorveryweak	nulleout rèsfaible	fehlendodersehr gering	ausenteomuydébil	BombayPink	1
weak	faible	gering	débil	Celrayel, EnterpriseWine-red, StartrekLilac	3
medium	moyenne	mittel	medio	BombayRose,Celkopured	5
strong	forte	stark	fuerte	EnterpriseWhite	7
verys trong	trèsforte	sehrstark	muyfuerte		9
19. Leafblade: (* undulationof margin	Limbe:ondulation dubord	Blattspreite: Randwellung	Limbo:ondulación delborde		
absent	absente	fehlend	ausente	BombayRose, EnterpriseWhite	1
present	présente	vorhanden	presente		9
20. Leafblade: (* curvatureof longitudinalaxis	Limbe:courburede l'axelongitudinal	Blattspreite: Biegungder Längsachse	Limbo:curvatura delejelongitudinal		
upwards	verslehaut	nachoben	haciaarriba		1
straight	droit	gerade	recto		2
downwards	verslebas	nachunten	haciaabajo		3
21. Inflorescence:main (* shape (+)	Inflorescence:forme principale	Blütenstand: Hauptform	Inflorescencia: formaprincipal		
spicate	spiciforme	ährenförmig	espiforme	EnterpriseWine -red, FlamingoFeather	1
plumose	plumeuse	federähnlich	plumosa	Hiryuno.2, KimonoCherry -red	2
paniculate	paniculée	rispenartig	paniculada	GeranaOrange	3
cristate	cristulée	kammförmig	enformadecresta	BombayRose,Martine	4

English	français	deutsch	español	Example Varieties Exemples Beispielssorten Variedadesejemplo	Note/ Nota
22. Inflorescence:length of main inflorescence (*)	Inflorescence: longueur de l'inflorescence principale	Blütenstand:Länge des Hauptblütenstandes	Inflorescencia: longitud de la inflorescencia principal		
short	courte	kurz	corta	Enterprise Salmon, Martine Pink	3
medium	moyenne	mittel	media	Bombay Salmon	5
long	longue	lang	larga	Caripe	7
23. Inflorescence:width of main inflorescence (*)	Inflorescence: largeur de l'inflorescence principale	Blütenstand:Breite des Hauptblütenstandes	Inflorescencia: anchura de la inflorescencia principal		
narrow	étroite	schmal	estrecha	Caripe, Enterprise Wine -red	3
medium	moyenne	mittel	media	Bombay Fire, Martine Pink	5
broad	large	breit	ancha	Bombay Salmon, Boscorcur	7
24. Inflorescence:color (*)	Inflorescence: couleur	Blütenstand:Farbe	Inflorescencia:color		
white	blanche	weiß	blanca	Enterprise White	1
green	verte	grün	verde		2
yellow	jaune	gelb	amarilla	Martine Yellow	3
orange	orange	orange	naranja	Super Dwarf Kimono Orange	4
orange pink	rose orangé	orange rosa	rosa naranja do		5
pink	rose	rosa	rosa	Bombay Rose	6
red	rouge	rot	roja	Red Chief	7
purple	violette	purpur	púrpura		8

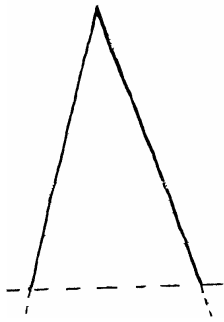
English	français	deutsch	español	Example Varieties Exemples Beispielssorten Variedades ejemplo	Note/ Nota
25. <u>Cristate group only</u> : (* <u>inflorescence: color</u> (+ <u>of prophylls on edge of top</u>)	<u>Groupes des variétés à inflorescence cristulée seulement</u> : inflorescence: couleur des prophylls sur le bord du sommet	<u>Nur kammförmige Gruppe:</u> Blütenstand: Farbe der Vorblätter am Rand der Spitze	<u>Sólo para el grupo con cresta :</u> inflorescencia: color de los filamentos en el borde de la parte superior		
white	blanches	weiß	blancos		1
green	vertes	grün	verdes		2
yellow	jaunes	gelb	amarillos	Bombay Gold, Bombay Yellow	3
orange	oranges	orange	naranjas	Bombay Orange	4
orange pink	rose orangé	orange rosa	rosa anaranjado	Boscorora	5
pink	roses	rosa	rosas	Bombay Rose	6
red	rouges	rot	rojos	Bombay Fire	7
purple	violettes	purpur	púrpura		8
26. <u>Cristate group only</u> : (* <u>inflorescence: color</u> (+ <u>of prophylls on distal part (excluding edge of top)</u>)	<u>Groupes des variétés à inflorescence cristulée seulement</u> : inflorescence: couleur des prophylls sur la partie distale (à l'exclusion du bord du sommet)	<u>Nur kammförmige Gruppe:</u> Blütenstand: Farbe der Vorblätter am unteren Teil (ohne Rand der Spitze)	<u>Sólo para el grupo con cresta :</u> inflorescencia: color de los filamentos en la parte distal (excluido el borde de la parte superior)		
white	blanches	weiß	blancos	Bombay Gold, Bombay Yellow	1
green	vertes	grün	verdes		2
yellow	jaunes	gelb	amarillos		3
orange	oranges	orange	naranjas		4
orange pink	rose orangé	orange rosa	rosa anaranjado		5
pink	roses	rosa	rosas	Bombay Orange, Bombay Pink	6
red	rouges	rot	rojos		7
purple	violettes	purpur	púrpura	Bombay Fire	8

English	français	deutsch	español	Example Varieties Exemples Beispielssorten Variedadesejemplo	Note/ Nota
27. <u>Cristategrouponly</u> : (*) inflorescence: degreeofundulation (viewedfromabove)	<u>Groupedesvariétés</u> à<u>inflorescence</u> <u>cristuléeseulement</u> : inflorescence:degré d'ondulation(envue dedessus)	<u>Nurkammförmige</u> <u>Gruppe:</u> <u>Blütenstand:</u> <u>Ausprägungder</u> <u>Wellung(vonoben</u> <u>gesehen)</u>	<u>Sóloparaelgrupo</u> <u>concresta</u> : <u>inflorescencia:</u> <u>gradodeondulación</u> <u>(vistodesdearriba)</u>		
weak	faible	gering	débil	BombayRose	3
medium	moyen	mittel	medio	BombayFire,Celrayel	5
strong	élevé	stark	fuerte	BombayDark -red, Boscorsun	7
28. <u>Tepal:shape</u> (*)	<u>Tépale:forme</u>	<u>Perigonblatt:Form</u>	<u>Tépalo:forma</u>		
elliptic	elliptique	elliptisch	elíptica	EnterpriseWhite, EnterpriseWine -red	1
ovate	ovale	eiförmig	oval	Martine, MartineScarlet	2
29. <u>Tepal:colorof</u> (*) <u>median</u>	<u>Tépale:couleurde</u> <u>lapartiemédiane</u>	<u>Perigonblatt:Farbe</u> <u>desmedianenteiles</u>	<u>Tépalo:colordela</u> <u>partemedia</u>		
RHSColourChart (indicatereference number)	CodeRHSdes couleurs(préciserle numéroderéférence)	RHS-Farbkarte (Nummerangeben)	CartadecoloresRHS (indíqueseelnúmero dereferencia)		
30. <u>Stamen:colorof</u> (*) <u>filament</u>	<u>Étamine:couleurdu</u> <u>filament</u>	<u>Staubgefäß:Farbe</u> <u>desStaubfadens</u>	<u>Estambre:colordel</u> <u>filamento</u>		
white	blanc	weiß	blanco	EnterpriseWhite, MartineScarlet	1
green	vert	grün	verde		2
yellow	jaune	gelb	amarillo		3
orange	orange	orange	naranja		4
orangepink	roseorangé	orangerosa	rosaanaranjado	Boscorkir	5
pink	rose	rosa	rosa	BombayOrange, Canaima	6
red	rouge	rot	rojo		7
purple	violet	purpur	púrpura	BombayPurple, Boscorcass	8

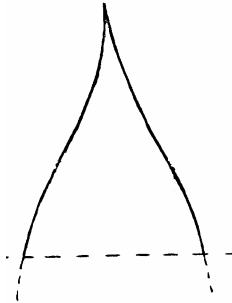
English	français	deutsch	español	Example Varieties Exemples Beispielssorten Variedadesejemplo	Note/ Nota
31. Pistil:colorofstyle (*)	Pistil:couleurdu style	Stempel:Farbedes Griffels	Pistilo:colordel estilo		
white	blanc	weiß	blanco		1
green	vert	grün	verde		2
yellow	jaune	gelb	amarillo	MartineYellow, YellowFlame	3
orange	orange	orange	naranja		4
orangepink	roseorangé	orangerosa	rosaanaranjado	BombaySalmon, BombayVelvet	5
pink	rose	rosa	rosa	MartineSalmon, MartineScarlet	6
red	rouge	rot	rojo		7
purple	violet	purpur	púrpura	BombayPurple	8
32. Pistil:colorof stigma (*)	Pistil:couleurdu stigmat	Stempel:Farbeder Narbe	Pistilo:colordel estigma		
white	blanc	weiß	blanco		1
green	vert	grün	verde		2
yellow	jaune	gelb	amarillo		3
orange	orange	orange	naranja		4
orangepink	roseorangé	orangerosa	rosaanaranjado		5
pink	rose	rosa	rosa		6
red	rouge	rot	rojo		7
purple	violet	purpur	púrpura		8

VIII. Explanations on the Table of Characteristics

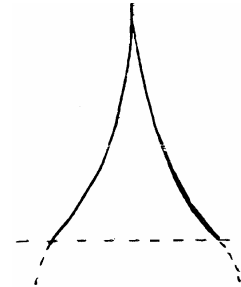
Ad.15: Leaf blade: shape of apex



1
acute



2
short acuminate



3
long acuminate

Ad.21: Inflorescence: main shape



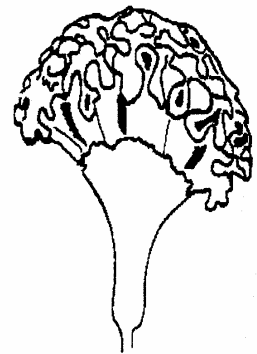
1
spicate



2
plumose



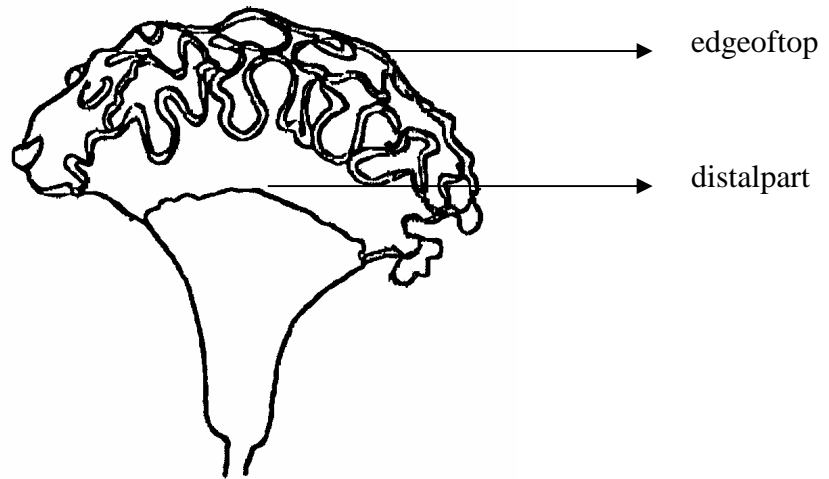
3
paniculate



4
cristate

Ad.25:Cristategrouponly:inflorescence: colorofprophyllsonedgeoftop

Ad.26:Cristategrouponly:inflorescence: colorofprophyllsondistalpart(excludingedge oftop)



IX. Literature

Nospecificliterature.

X. TechnicalQuestionnaire

	ReferenceNumber (nottobefiledinbytheapplicant)
<p>TECHNICALQUESTIONNAIRE tobecompletedinconnectionwithanapplicationforplantbreeders'rights</p>	
1. Species	<p><i>Celosia L.</i> CELOSIA</p>
2. Applicant(Nameandaddress)	
3. Proposeddenominationorbreeder' sreference	

4. Information on origin, maintenance and reproduction of the variety

4.1 Origin

(a) Seedling (indicate parent varieties)

.....

(b) Mutation (indicate parent variety)

.....

(c) Discovery (indicate where and when)

.....

(d) Other (specify)

.....

4.2 Method of reproduction

– cuttings

– seed

– other (state method)

4.3 Other information

5. Characteristics of the variety to be indicated (the number in brackets refers to the corresponding characteristic in Test Guidelines; please mark the state of expression which best corresponds).

Characteristics	Example Varieties	Note
5.1 Plant:height (1)		
veryshort	SuperDwarfKimonoOrange	1[]
short	CenturyRose	3[]
medium	Martine	5[]
tall	Bombay	7[]
verytall		9[]
5.2 Inflorescence:mainshape (21)		
spicate	EnterpriseWine -red, Flamingo Feather	1[]
plumose	Hiryuno.2, KimonoCherry -red	2[]
paniculate	GeranaOrange	3[]
cristate	BombayRose,Martine	4[]
5.3 Inflorescence:color (24)		
white	EnterpriseWhite	1[]
green		2[]
yellow	MartineYellow	3[]
orange	Super DwarfKimonoOrange	4[]
orangepink		5[]
pink	BombayRose	6[]
red	RedChief	7[]
purple		8[]

6. Similar varieties and differences from these varieties

Denomination of similar variety	Characteristic in which the similar variety is different ^{o)}	State of expression of similar variety	State of expression of candidate variety
---------------------------------	--	--	--

^{o)} In the case of identical states of expression of both varieties, please indicate the size of the difference.

7. Additional information which may help to distinguish the variety

7.1 Resistance to pests and diseases

7.2 Special conditions for the examination of the variety

cutflower

potplant

beddingplant

other(specify)

7.3 Other information

A representative color photo of the variety should be added to the Technical Questionnaire.

8. Authorizationforrelease

(a) Doesthevarietyrequirepriorauthorizationforreleaseunderlegislationconcerning
theprotectionoftheenvironment,humanandanimalhealth?

Yes No

(b) Hassuchauthorizationbeenobtained?

Yes No

Iftheanswertothatquestionisyes,pleaseattachacopyofsuchanauthorization.

[Endofdo cument]