

**Technical Working Party on Automation and Computer Programs**    **TWC/35/17****Thirty-Fifth Session**  
**Buenos Aires, Argentina, November 14 to 17, 2017****Original:** English  
**Date:** November 8, 2017

---

**A SINGLE TOOL FOR DUS COMPUTATION PROCESS***Document prepared by an expert from France**Disclaimer: this document does not represent UPOV policies or guidance*

The Annex to this document contains a copy of a presentation on “A single tool for DUS computation process”, prepared by an expert from France, to be made at the thirty-fifth session of the Technical Working Party on Automation and Computer Programs (TWC).

[Annex follows]

A SINGLE TOOL FOR DUS COMPUTATION PROCESS

Presentation prepared by an expert from France

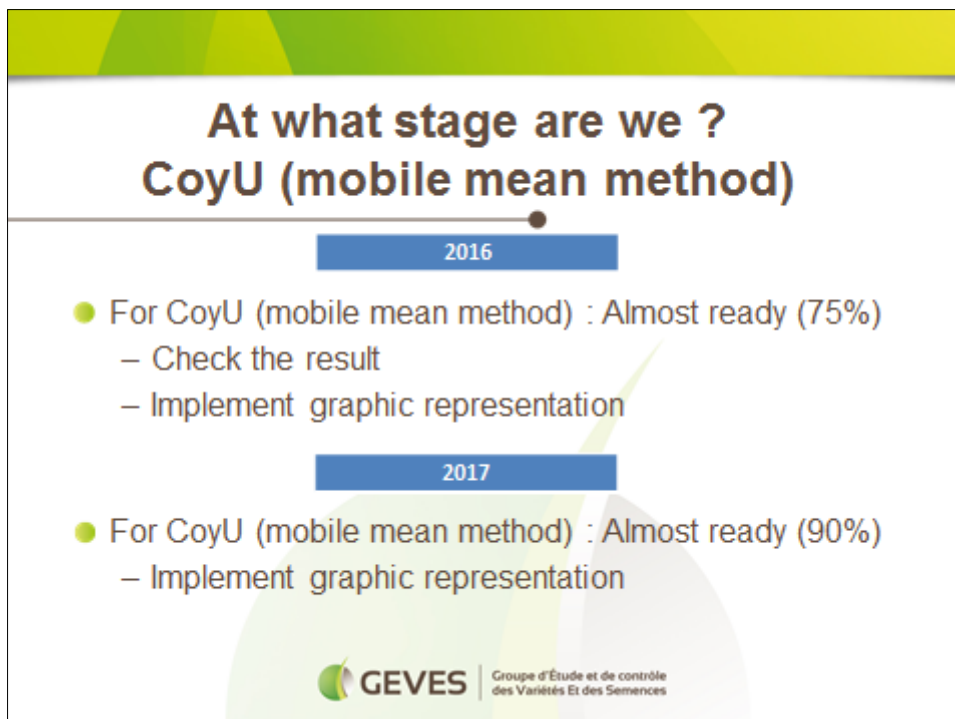


**A single tool for DUS computation process**

**Buenos Aires Twc 35  
Novembre 2017**



**GEVES**  
Expertise & Performance




**At what stage are we ?  
CoyU (mobile mean method)**

**2016**

- For CoyU (mobile mean method) : Almost ready (75%)
  - Check the result
  - Implement graphic representation

**2017**

- For CoyU (mobile mean method) : Almost ready (90%)
  - Implement graphic representation



**GEVES** | Groupe d'Étude et de contrôle  
des Variétés Et des Semences

**At what stage are we ?**  
**CoyD**

2016

- For CoyD : Started significantly (50%)
  - Finalize output file
  - Generate final report
  - Check the result
  - Implement graphic representation

2017

- For CoyD : Started significantly (80%)
  - Check the result
  - Implement graphic representation

**GEVES** | Groupe d'Étude et de contrôle des Variétés Et des Semences

**At what stage are we ?**  
**CoyU**

2016

- For CoyU (spline method) : Not really started

2017

- For CoyU (spline method) : Not really started

**GEVES** | Groupe d'Étude et de contrôle des Variétés Et des Semences

## Launch Coy process

- List of parameters for CoyD session

Species Name	CV Session	Session Name	Date	First test level for first year	Second test level for first year	Test level for second year	Test level for second and third year	MURA analysis	level for the First of MURA
Lucerne	1	Coy-C Lucerne 2015-2016	06/10/2017	0.100	0.100	0.100	0.100		0.010

## Storage of statistical data

- All statistical data returned by COYD process are stored into GAIA database for 3 different level :

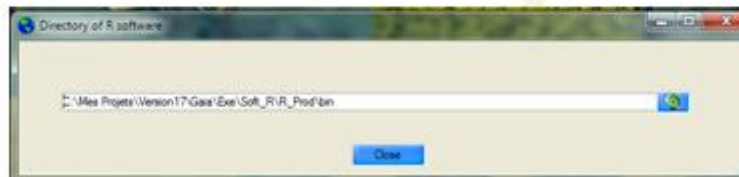
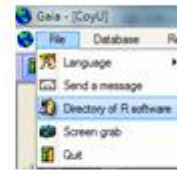


- Use data for other purpose
- Traceability
- Run different type of report

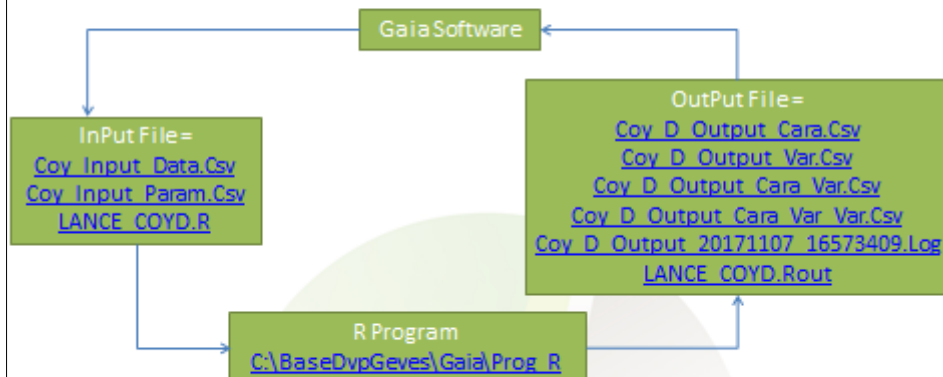
Characteristic	Short name	Long name	Type of characteristic	Year	Status	Parameter code	Long Name	Short Name	Value
952	Height <sub>h</sub>	Height at autumn	3			COY_1	CoyD 1	CoyD 1	18.6
952	Height <sub>h</sub>	Height at autumn	3			COY_1_815	CoyD 1	CoyD 1	6.41
952	Height <sub>h</sub>	Height at autumn	3			COY_2	CoyD 2	CoyD 2	21.48
952	Height <sub>h</sub>	Height at autumn	3			DF_VARI	DF Variety	DF Variety	1001
952	Height <sub>h</sub>	Height at autumn	3			F_VAR_205	F Var Year	F Var Year	20.02
952	Height <sub>h</sub>	Height at autumn	3			RS_405	RS Year	RS Year	1808.51
952	Height <sub>h</sub>	Height at autumn	3			RS_VARI	RS Variety	RS Variety	215.63
952	Height <sub>h</sub>	Height at autumn	3			RS_VARI_89	RS Variety Year	RS Var Year	10.38
952	Height <sub>h</sub>	Height at autumn	3			RS_VARI_8107	RS Variety Reference	RS Var Ref	6.11
952	Height <sub>h</sub>	Height at autumn	3	2015		DF_RES	DF Residual	DF Residual	412
952	Height <sub>h</sub>	Height at autumn	3	2015		LSD_1	Lsd %	Lsd %	-0.0300
952	Height <sub>h</sub>	Height at autumn	3	2015		LSD_2	Lsd %	Lsd %	-0.1508
952	Height <sub>h</sub>	Height at autumn	3	2015		RS_RES	RS Residual	RS Residual	0.63
952	Height <sub>h</sub>	Height at autumn	3	2015		SD_INTRA	Sd intra	Sd intra	1.7
952	Height <sub>h</sub>	Height at autumn	3	2015		DF_RES	DF Residual	DF Residual	629
952	Height <sub>h</sub>	Height at autumn	3	2016		LSD_1	Lsd %	Lsd %	-0.0204
952	Height <sub>h</sub>	Height at autumn	3	2016		LSD_2	Lsd %	Lsd %	-0.1171

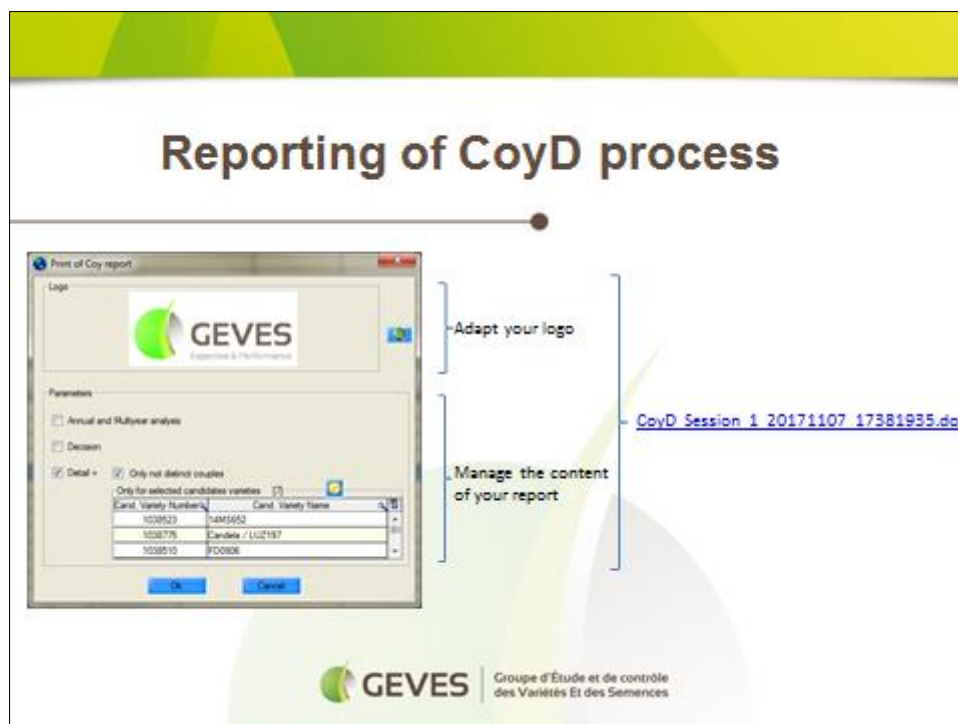
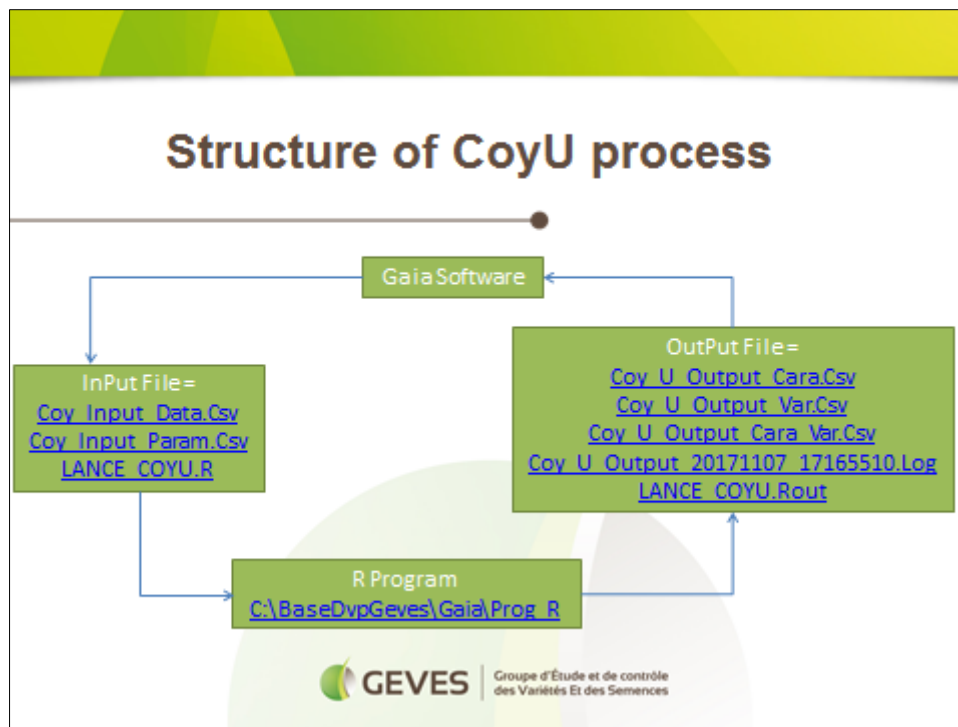
## Launch Coy process

- Coy process is run under R software.
- R software is include with Gaia installation
- Possibility to use your own R software → Menu File/Directory of R software



## Structure of CoyD process





# Reporting of CoyU process

- Adapt your logo

- Manage the content of your report

[CoyU\\_Session 2 20171107 19013674.doc](#)

**GEVES** | Groupe d'Étude et de contrôle des Variétés Et des Semences

[End of Annex and of document]